

Report Number: CN225P6Z 003

Model: CM1633, 3700 PRO, GCF20FM, CM1663, 3700 GENSE, GCF20F, CM1662, 3700 ESSENTIAL, CM1635, CM1665B, 4700 GENSE, CM1638A, GCF20FA, CM1670A, CM1666



Figure 1. Overview (GCF20FA, CM1638A)



Figure 2. Overview (GCF20FA, CM1638A)

Report Number: CN225P6Z 003

Model: CM1633, 3700 PRO, GCF20FM, CM1663, 3700 GENSE, GCF20F, CM1662, 3700 ESSENTIAL, CM1635, CM1665B, 4700 GENSE, CM1638A, GCF20FA, CM1670A, CM1666



Figure 3. Overview (GCF20FA, CM1638A)



Figure 4. Overview (GCF20FA, CM1638A)

Report Number: CN225P6Z 003

Model: CM1633, 3700 PRO, GCF20FM, CM1663, 3700 GENSE, GCF20F, CM1662, 3700 ESSENTIAL, CM1635, CM1665B, 4700 GENSE, CM1638A, GCF20FA, CM1670A, CM1666

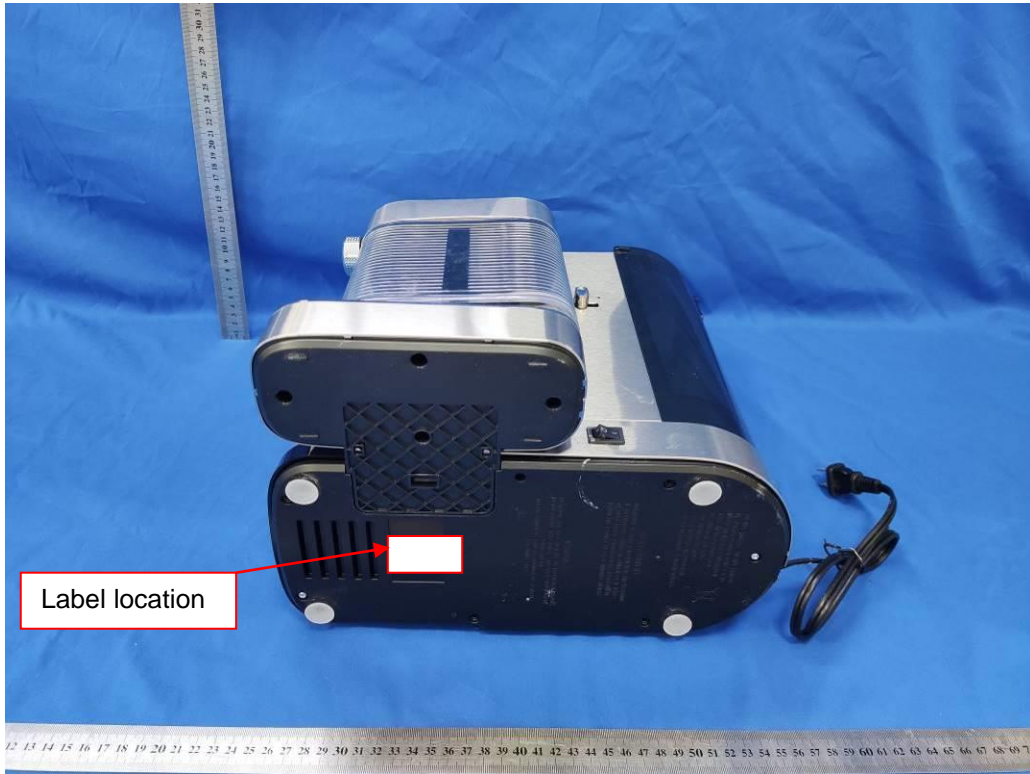


Figure 5. Overview (GCF20FA, CM1638A)

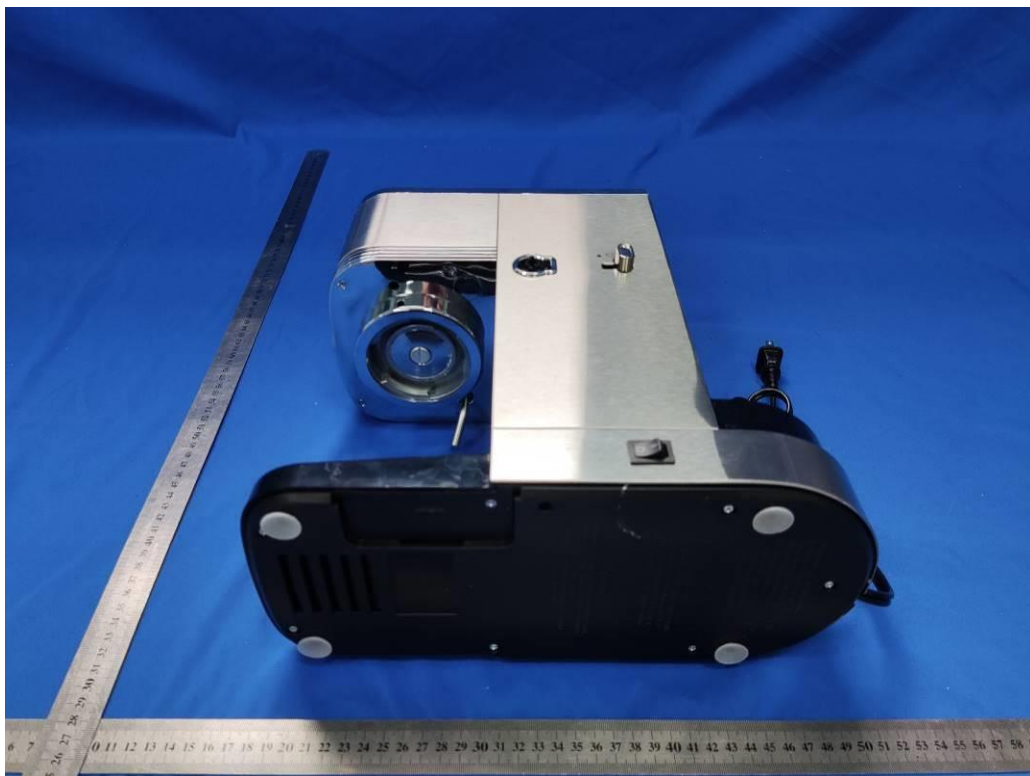


Figure 6. Overview (GCF20FA, CM1638A)

Report Number: CN225P6Z 003

Model: CM1633, 3700 PRO, GCF20FM, CM1663, 3700 GENSE, GCF20F,
CM1662, 3700 ESSENTIAL, CM1635, CM1665B, 4700 GENSE, CM1638A,
GCF20FA, CM1670A, CM1666

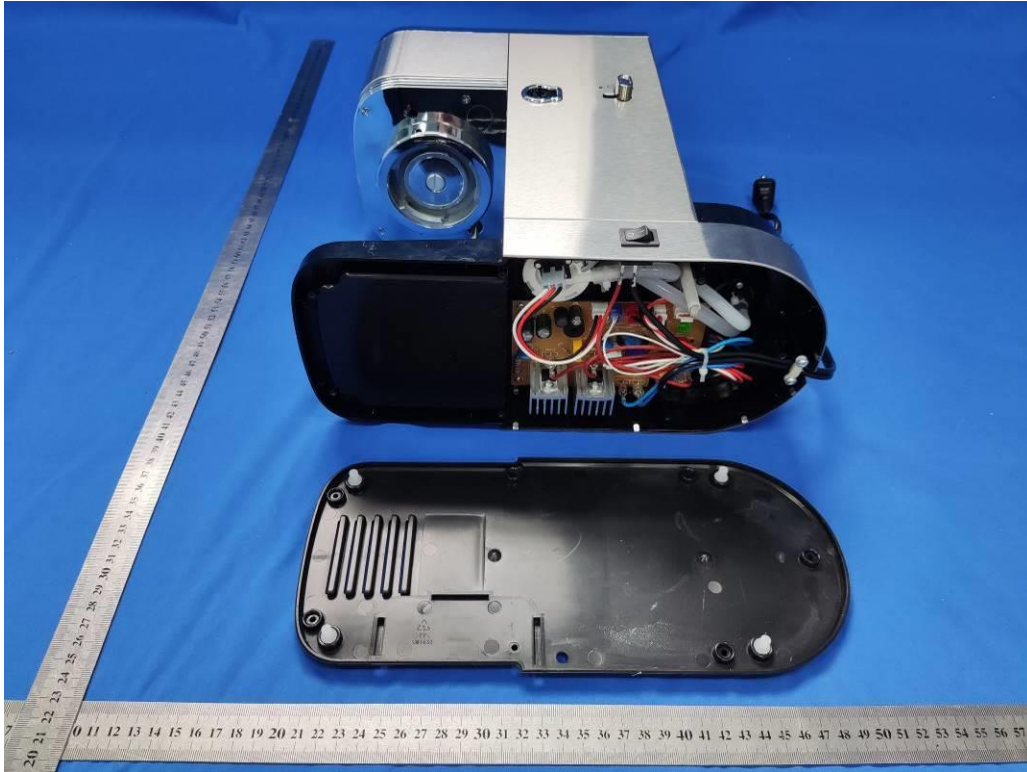


Figure 7. Internal view (GCF20FA, CM1638A)

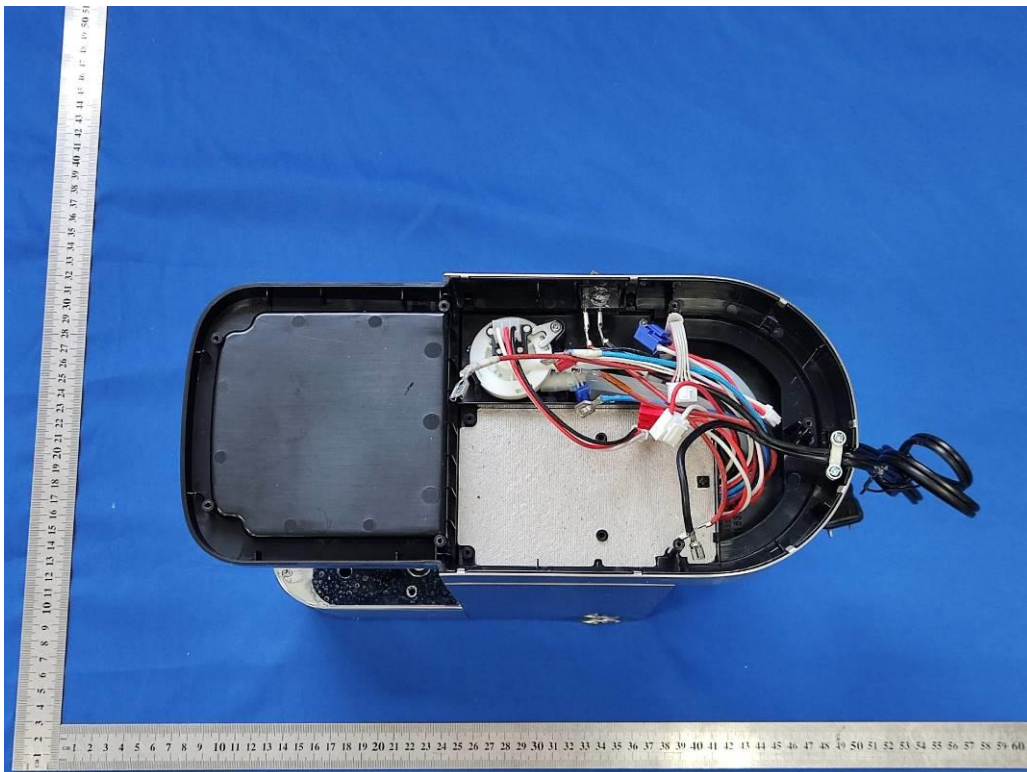


Figure 8. Internal view (GCF20FA, CM1638A)

Report Number: CN225P6Z 003

Model: CM1633, 3700 PRO, GCF20FM, CM1663, 3700 GENSE, GCF20F, CM1662, 3700 ESSENTIAL, CM1635, CM1665B, 4700 GENSE, CM1638A, GCF20FA, CM1670A, CM1666



Figure 9. Internal view (GCF20FA, CM1638A)

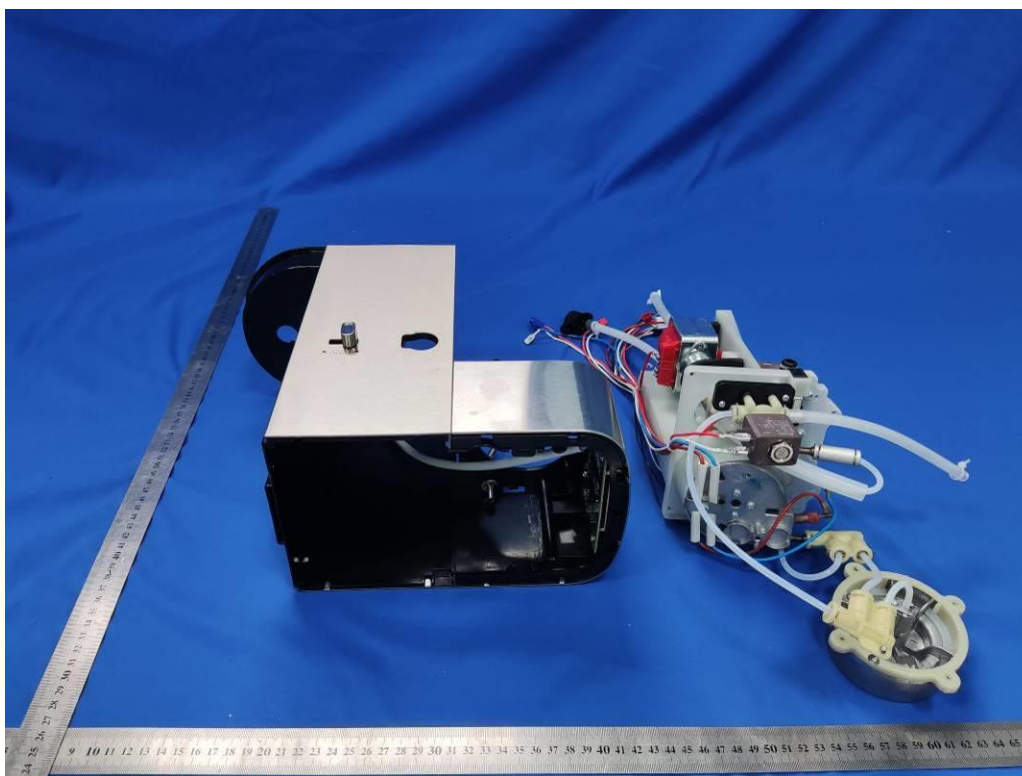


Figure 10. Overview (GCF20FA, CM1638A)

Report Number: CN225P6Z 003

Model: CM1633, 3700 PRO, GCF20FM, CM1663, 3700 GENSE, GCF20F, CM1662, 3700 ESSENTIAL, CM1635, CM1665B, 4700 GENSE, CM1638A, GCF20FA, CM1670A, CM1666

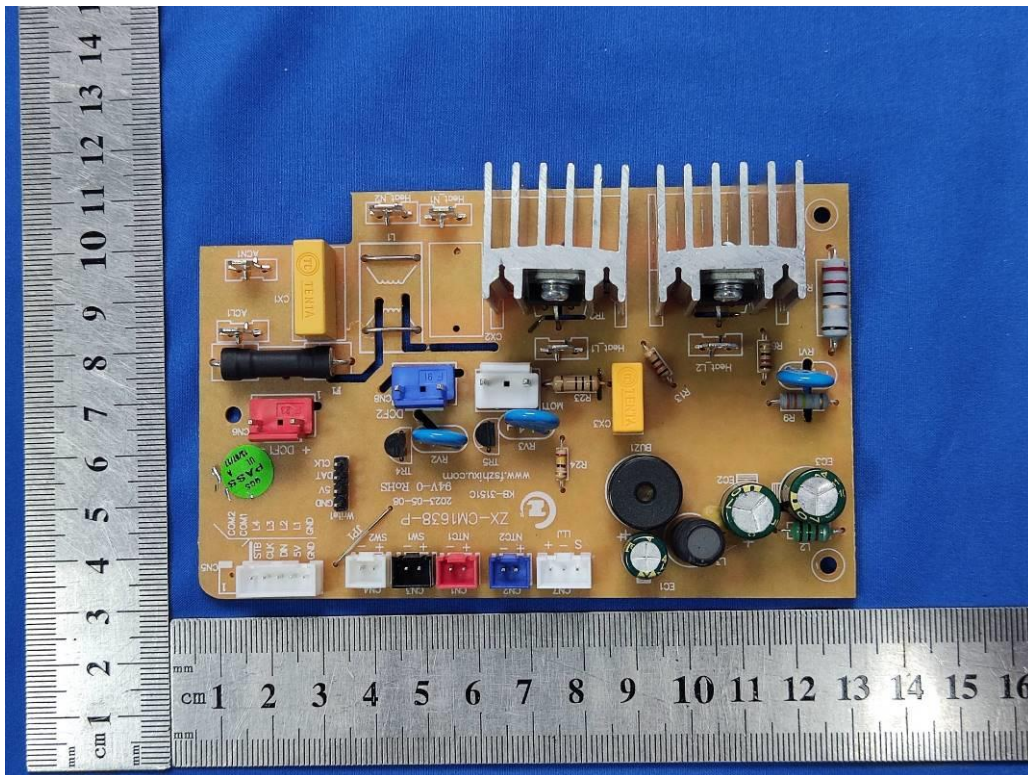


Figure 11. Main PCB view (GCF20FA, CM1638A)

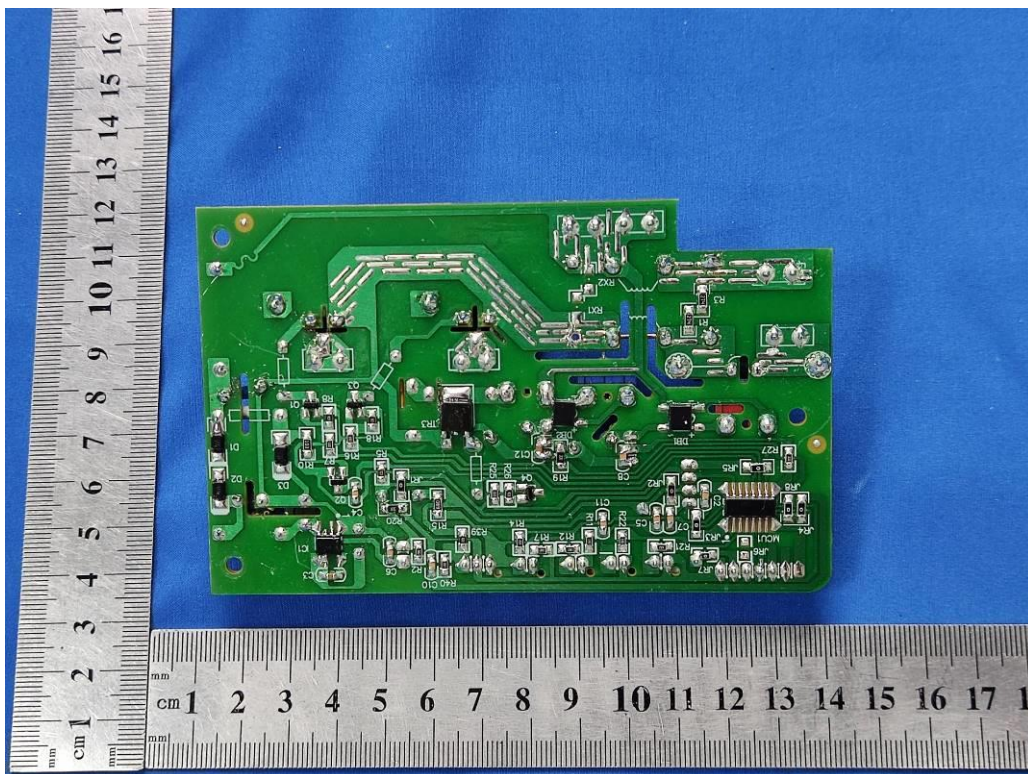


Figure 12. Main PCB view (GCF20FA, CM1638A)

Report Number: CN225P6Z 003

Model: CM1633, 3700 PRO, GCF20FM, CM1663, 3700 GENSE, GCF20F, CM1662, 3700 ESSENTIAL, CM1635, CM1665B, 4700 GENSE, CM1638A, GCF20FA, CM1670A, CM1666

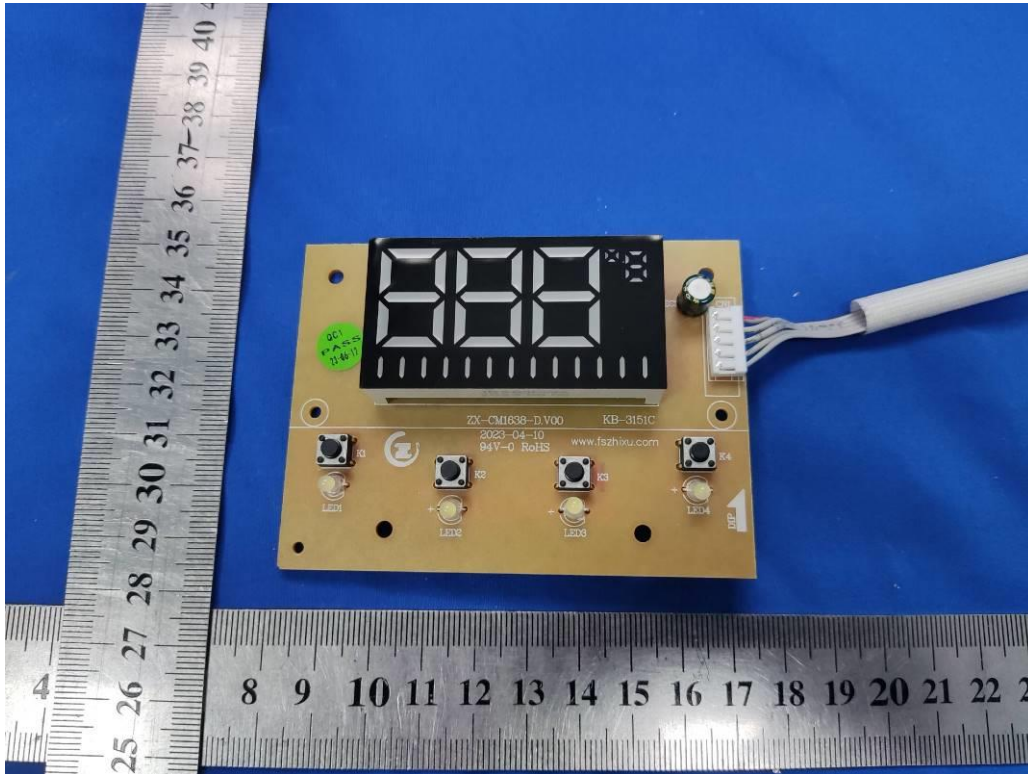


Figure 13. Control PCB view (GCF20FA, CM1638A)

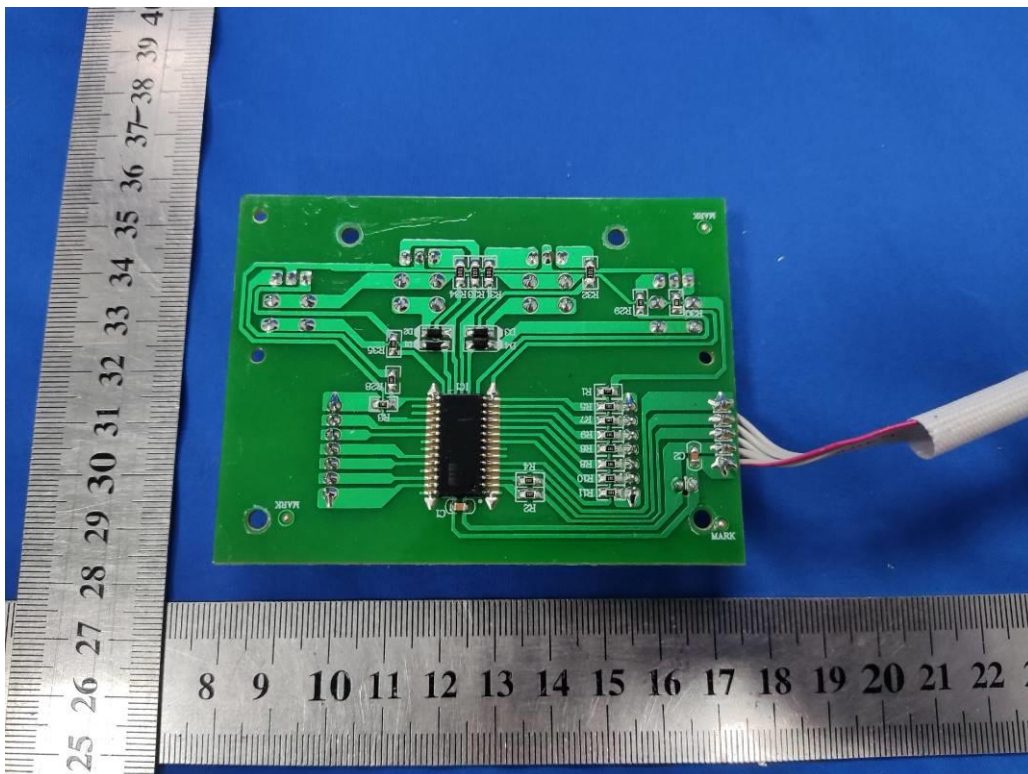


Figure 14. Control PCB view (GCF20FA, CM1638A)

Report Number: CN225P6Z 003

Model: CM1633, 3700 PRO, GCF20FM, CM1663, 3700 GENSE, GCF20F,
CM1662, 3700 ESSENTIAL, CM1635, CM1665B, 4700 GENSE, CM1638A,
GCF20FA, CM1670A, CM1666



Figure 15. Solenoid valve (GCF20FA, CM1638A, 4700 GENSE, CM1670A)

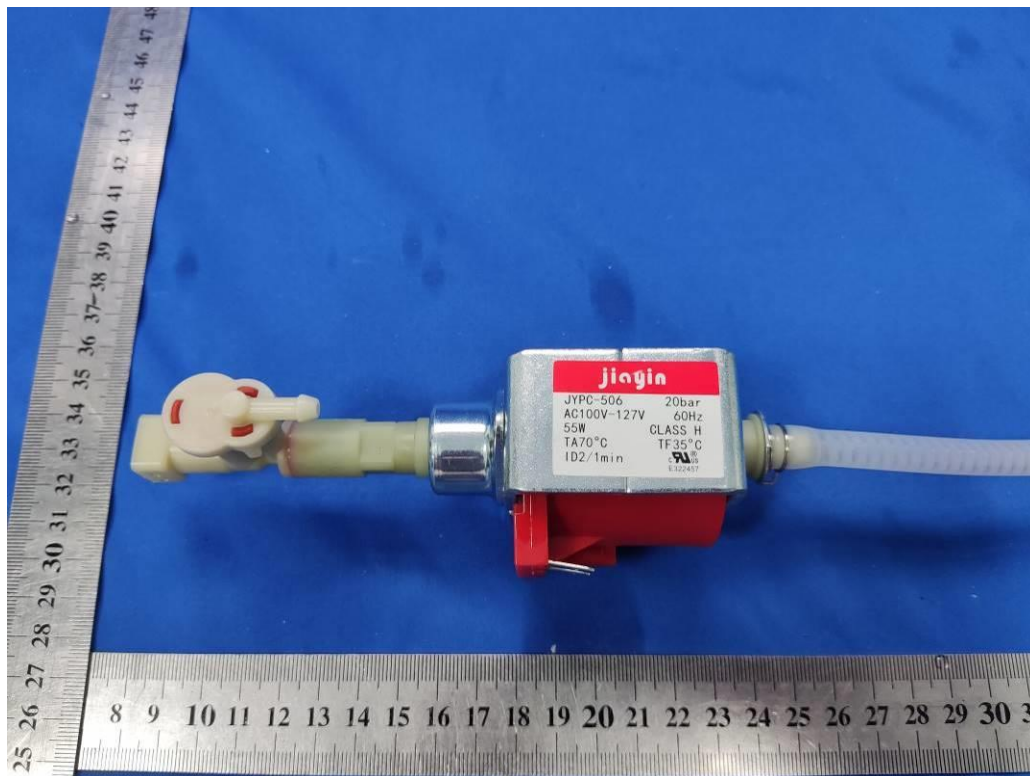


Figure 16. Adding alternative water pump (All models)

Report Number: CN225P6Z 003

Model: CM1633, 3700 PRO, GCF20FM, CM1663, 3700 GENSE, GCF20F,
CM1662, 3700 ESSENTIAL, CM1635, CM1665B, 4700 GENSE, CM1638A,
GCF20FA, CM1670A, CM1666



Figure 17. Overview (4700 GENSE, CM1670A)

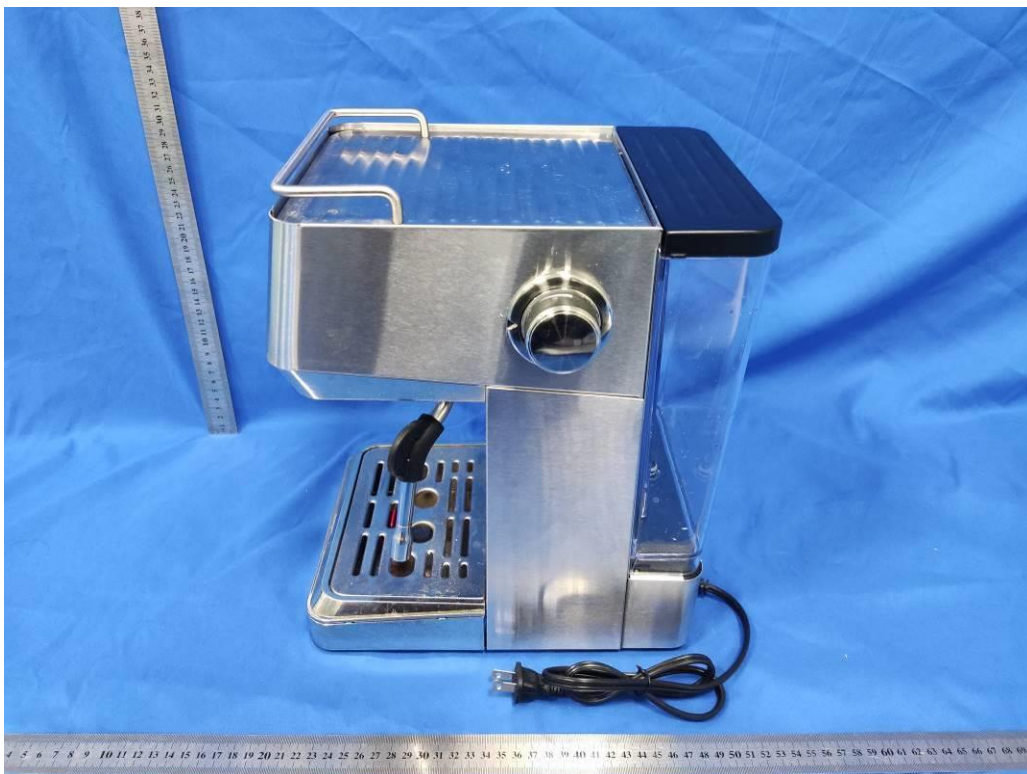


Figure 18. Overview (4700 GENSE, CM1670A)

Report Number: CN225P6Z 003

Model: CM1633, 3700 PRO, GCF20FM, CM1663, 3700 GENSE, GCF20F,
CM1662, 3700 ESSENTIAL, CM1635, CM1665B, 4700 GENSE, CM1638A,
GCF20FA, CM1670A, CM1666

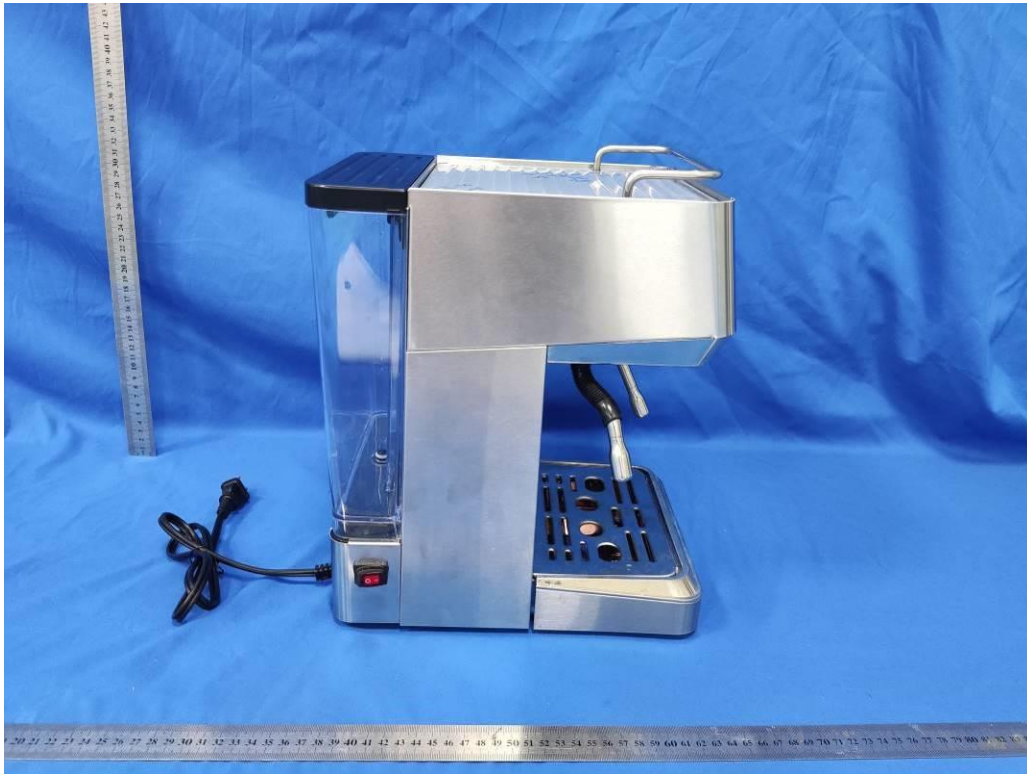


Figure 19. Overview (4700 GENSE, CM1670A)



Figure 20. Overview (4700 GENSE, CM1670A)

Report Number: CN225P6Z 003

Model: CM1633, 3700 PRO, GCF20FM, CM1663, 3700 GENSE, GCF20F,
CM1662, 3700 ESSENTIAL, CM1635, CM1665B, 4700 GENSE, CM1638A,
GCF20FA, CM1670A, CM1666



Figure 21. Internal view (4700 GENSE, CM1670A)

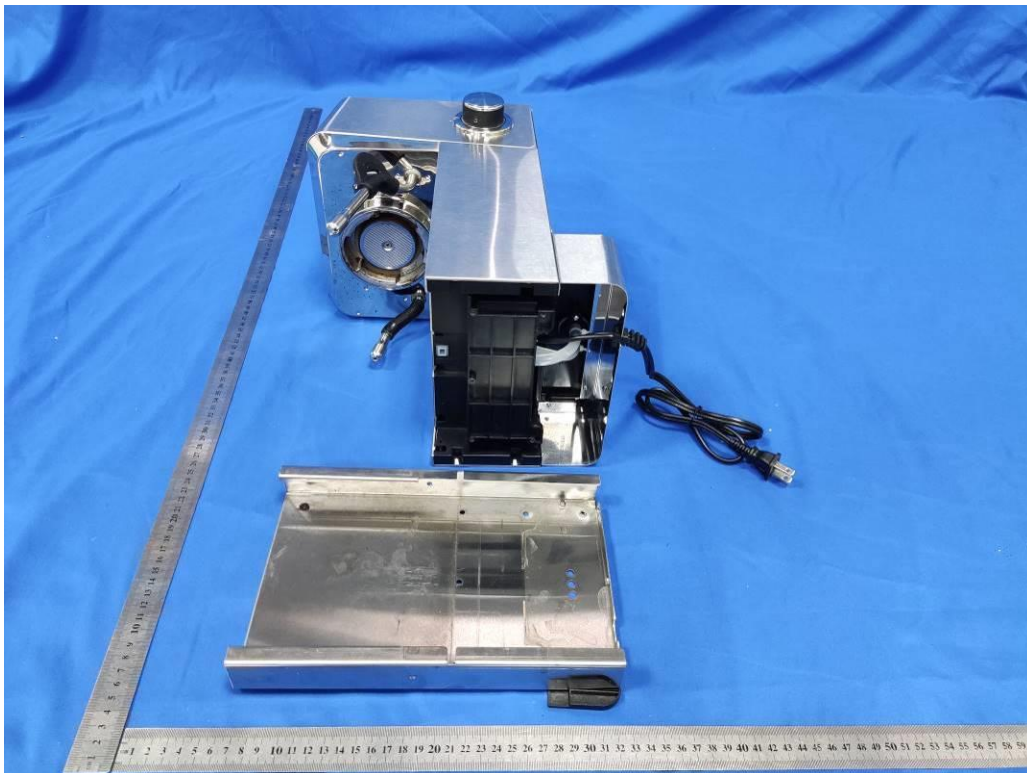


Figure 22. Internal view (4700 GENSE, CM1670A)

Report Number: CN225P6Z 003

Model: CM1633, 3700 PRO, GCF20FM, CM1663, 3700 GENSE, GCF20F,
CM1662, 3700 ESSENTIAL, CM1635, CM1665B, 4700 GENSE, CM1638A,
GCF20FA, CM1670A, CM1666

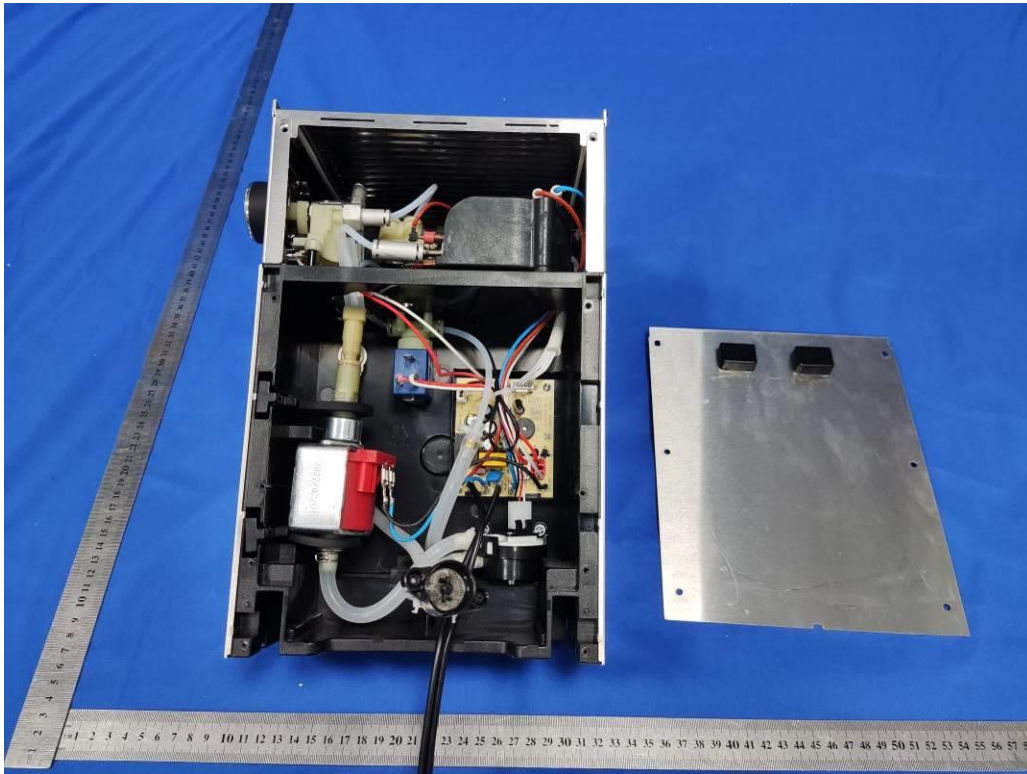


Figure 23. Internal view (4700 GENSE, CM1670A)

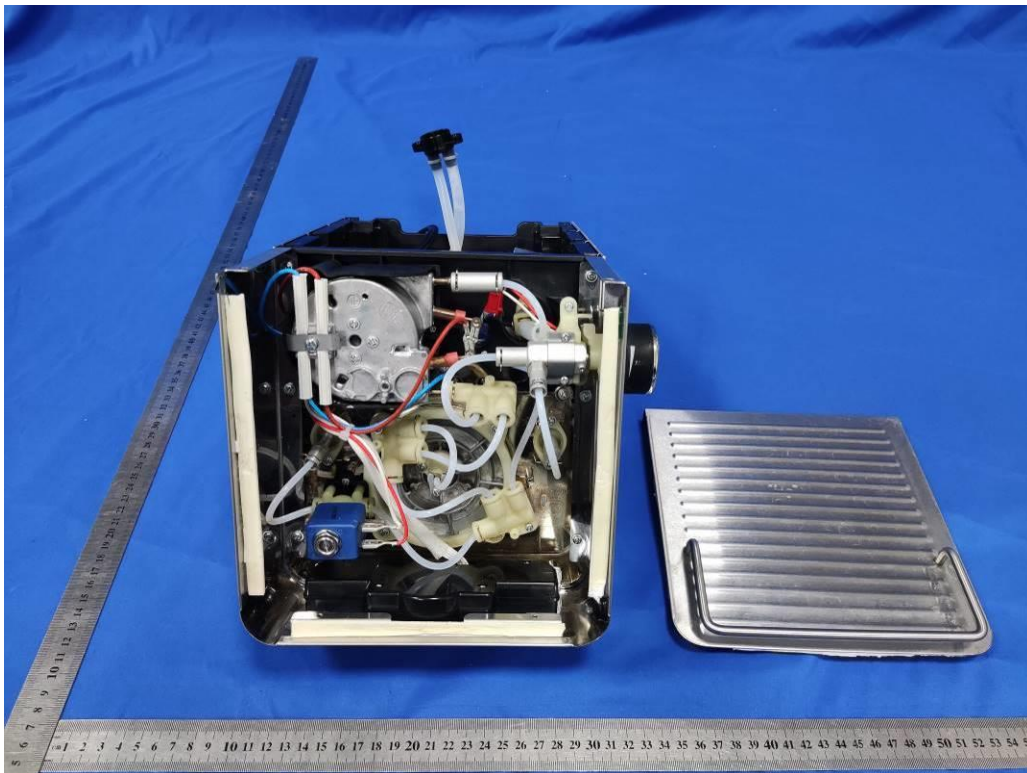


Figure 24. Internal view (4700 GENSE, CM1670A)

Report Number: CN225P6Z 003

Model: CM1633, 3700 PRO, GCF20FM, CM1663, 3700 GENSE, GCF20F, CM1662, 3700 ESSENTIAL, CM1635, CM1665B, 4700 GENSE, CM1638A, GCF20FA, CM1670A, CM1666

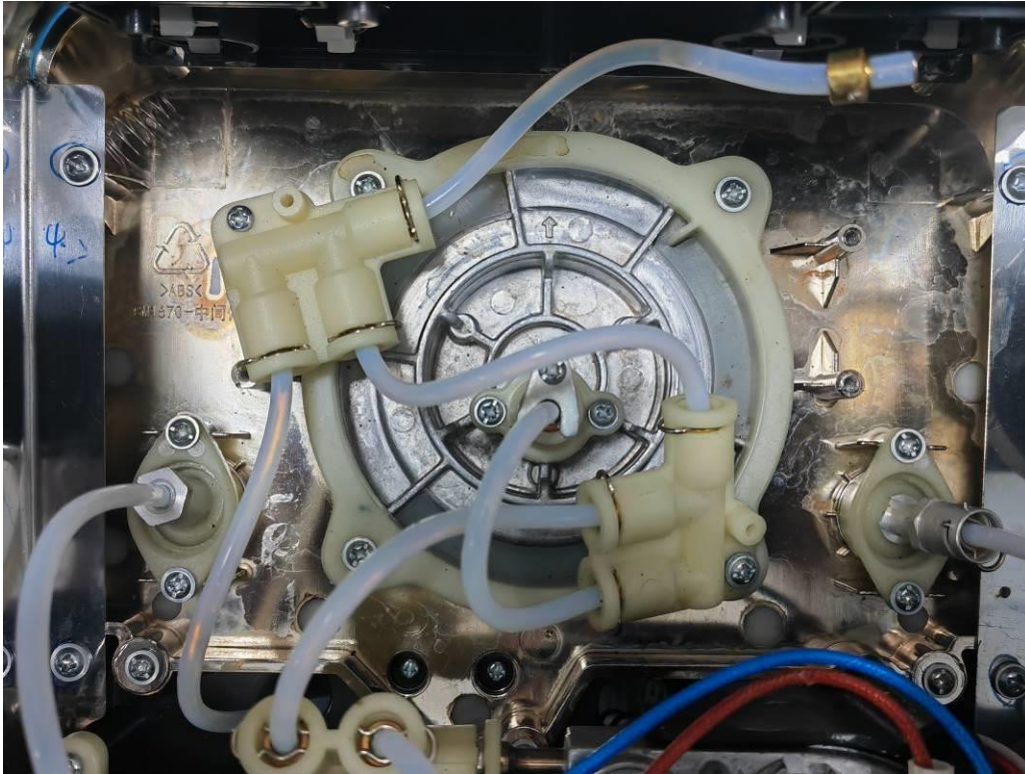


Figure 25. Internal view (4700 GENSE, CM1670A)

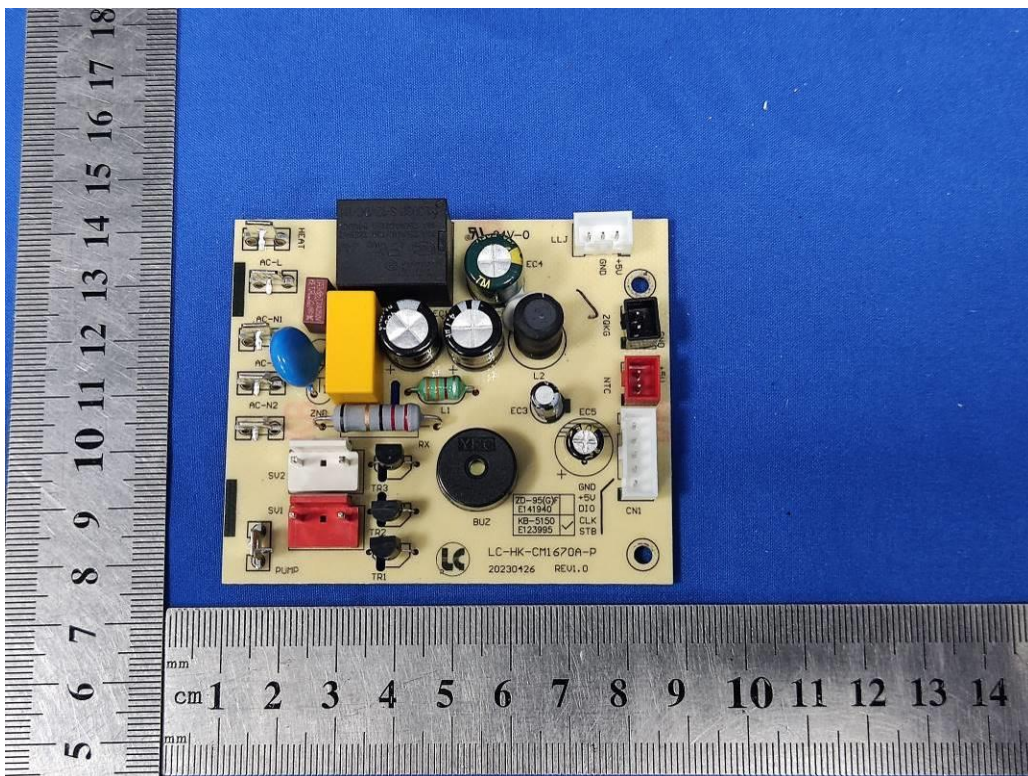


Figure 26. Main PCB view (4700 GENSE, CM1670A)

Report Number: CN225P6Z 003

Model: CM1633, 3700 PRO, GCF20FM, CM1663, 3700 GENSE, GCF20F, CM1662, 3700 ESSENTIAL, CM1635, CM1665B, 4700 GENSE, CM1638A, GCF20FA, CM1670A, CM1666

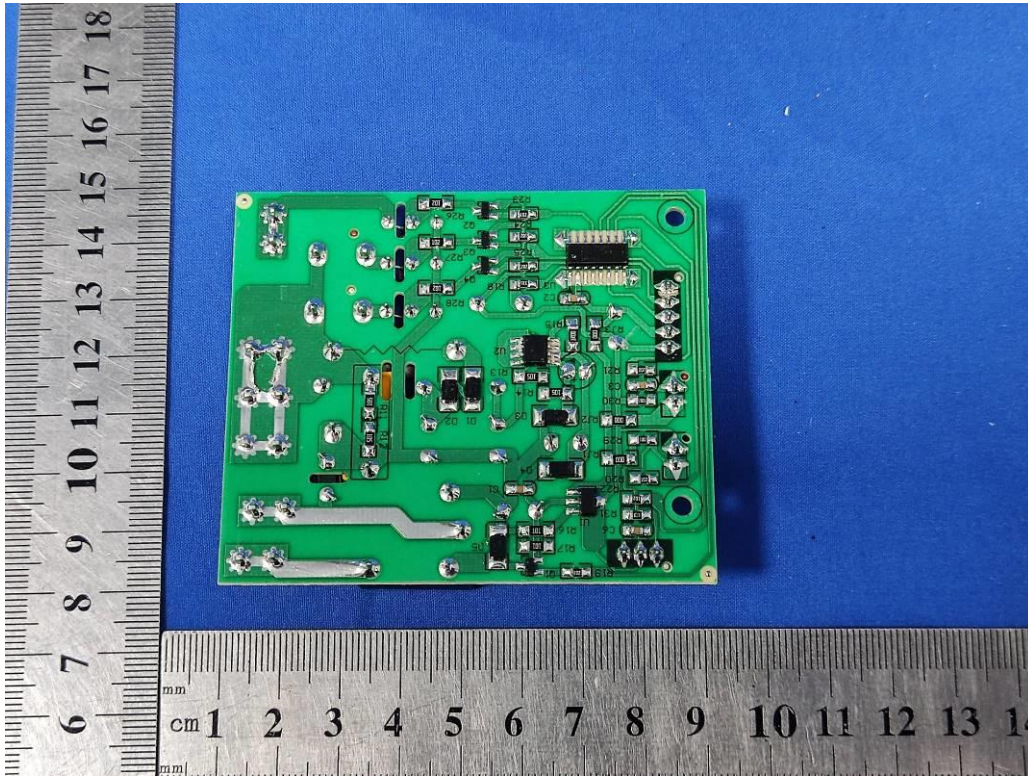


Figure 27. Main PCB view (4700 GENSE, CM1670A)

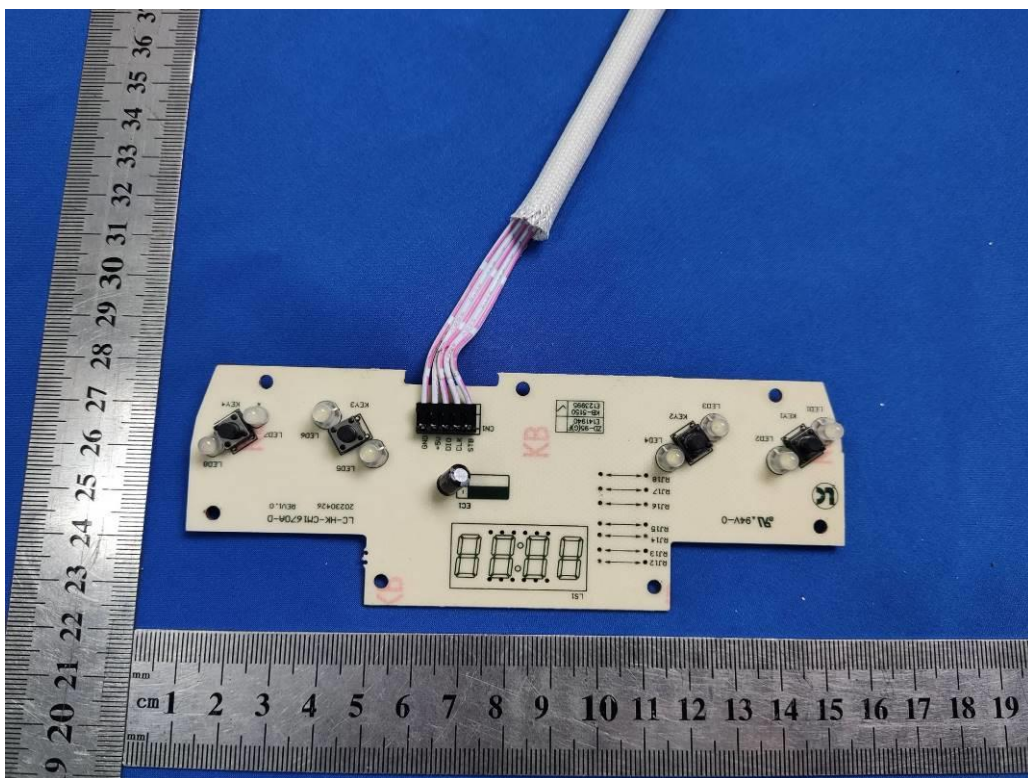


Figure 28. Control PCB view (4700 GENSE, CM1670A)

Report Number: CN225P6Z 003

Model: CM1633, 3700 PRO, GCF20FM, CM1663, 3700 GENSE, GCF20F, CM1662, 3700 ESSENTIAL, CM1635, CM1665B, 4700 GENSE, CM1638A, GCF20FA, CM1670A, CM1666

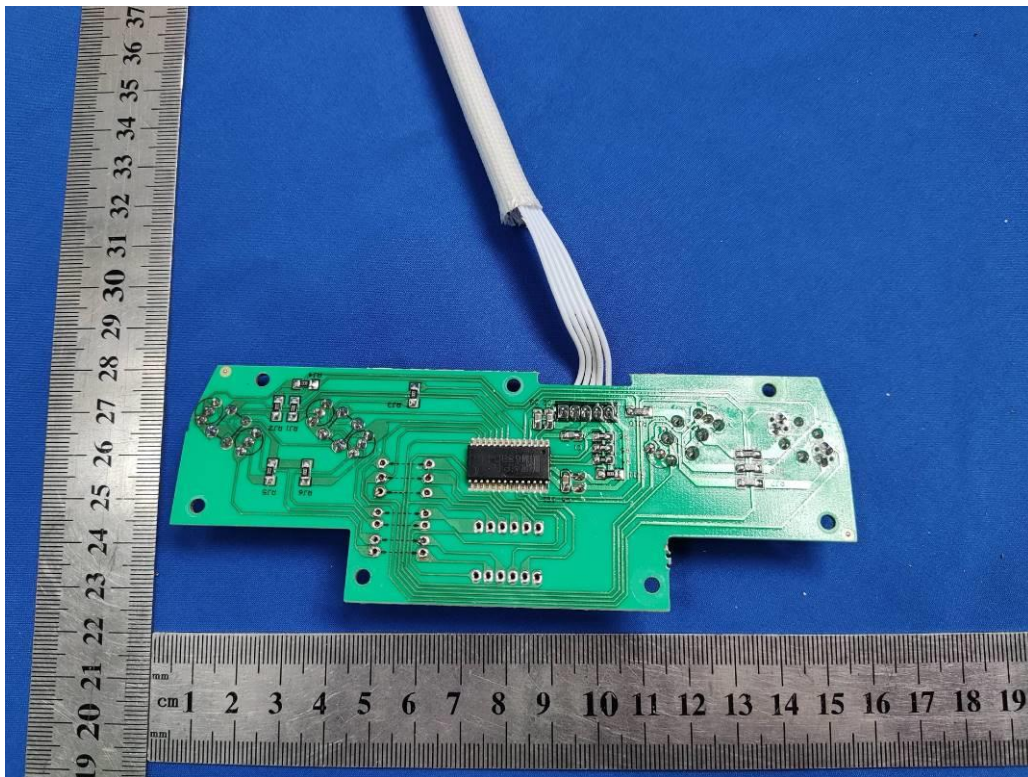


Figure 29. Control PCB view (4700 GENSE, CM1670A)

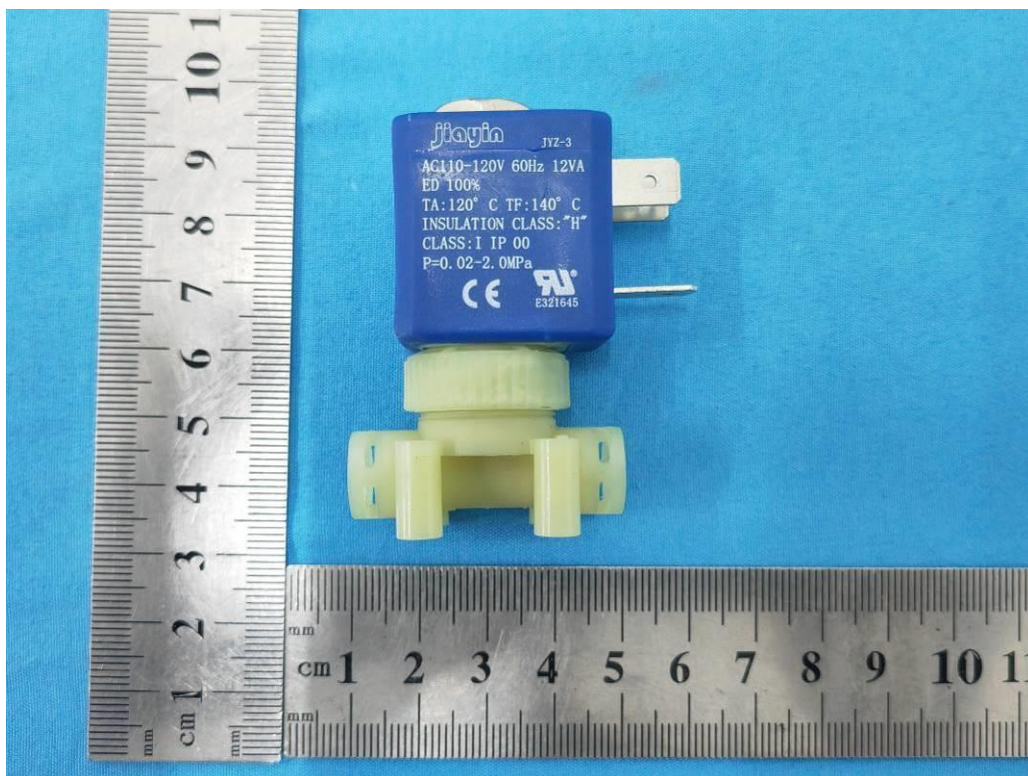


Figure 30. Solenoid valve (GCF20FA, CM1638A, 4700 GENSE, CM1670A)

Report Number: CN225P6Z 003

Model: CM1633, 3700 PRO, GCF20FM, CM1663, 3700 GENSE, GCF20F,
CM1662, 3700 ESSENTIAL, CM1635, CM1665B, 4700 GENSE, CM1638A,
GCF20FA, CM1670A, CM1666

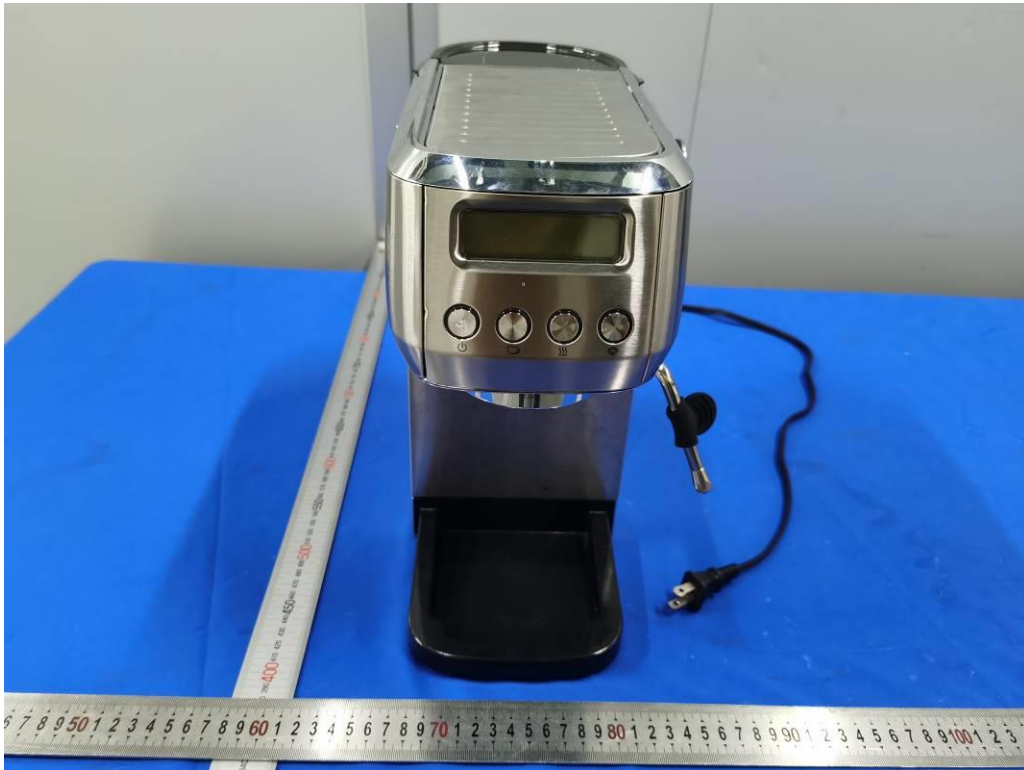


Figure 31. Overview (CM1666)

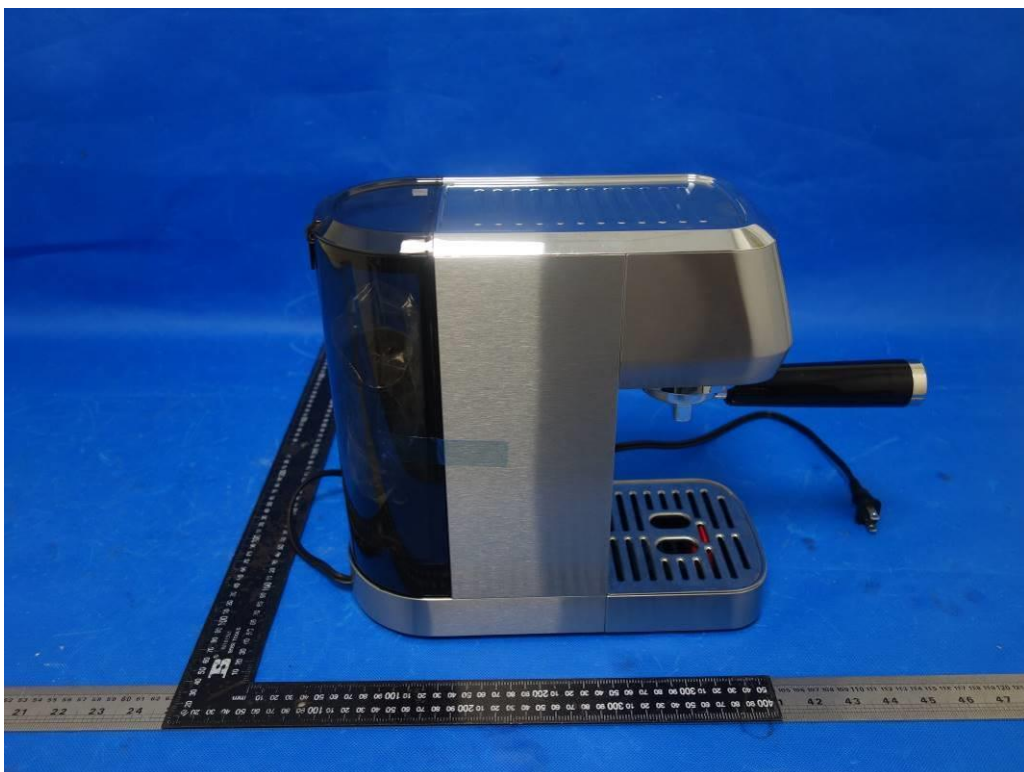


Figure 32. Overview (CM1666)

Report Number: CN225P6Z 003

Model: CM1633, 3700 PRO, GCF20FM, CM1663, 3700 GENSE, GCF20F,
CM1662, 3700 ESSENTIAL, CM1635, CM1665B, 4700 GENSE, CM1638A,
GCF20FA, CM1670A, CM1666



Figure 33. Overview (CM1666)



Figure 34. Overview (CM1666)

Report Number: CN225P6Z 003

Model: CM1633, 3700 PRO, GCF20FM, CM1663, 3700 GENSE, GCF20F,
CM1662, 3700 ESSENTIAL, CM1635, CM1665B, 4700 GENSE, CM1638A,
GCF20FA, CM1670A, CM1666

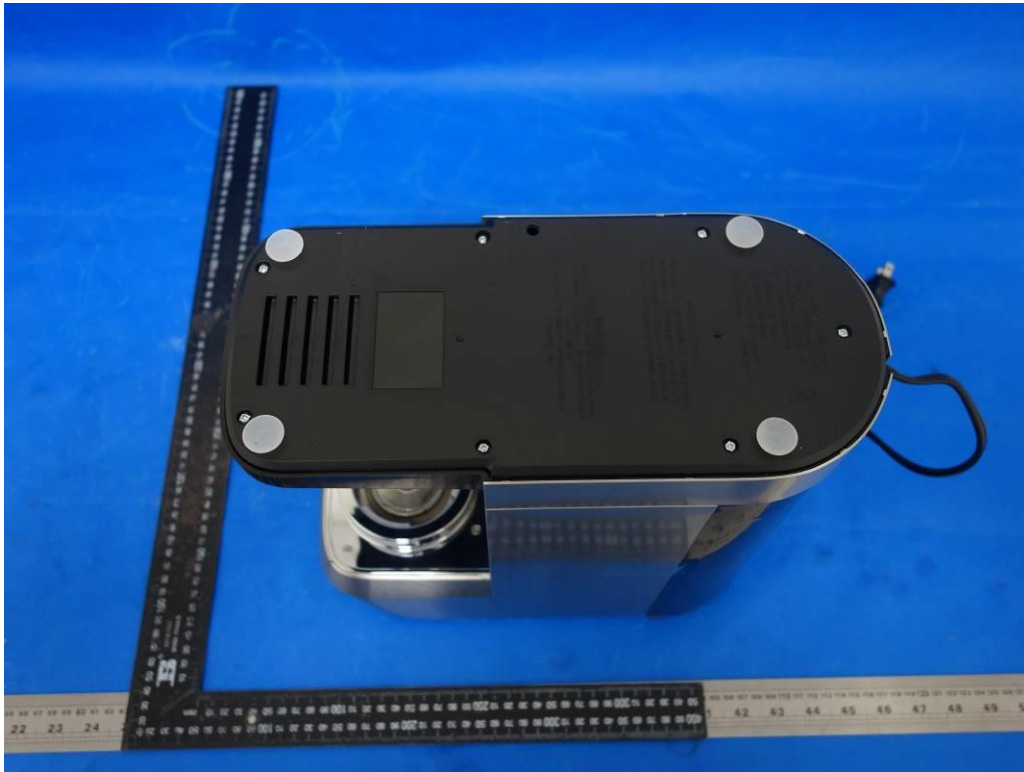


Figure 35. Overview (CM1666)



Figure 36. Control PCB view (CM1666)

Report Number: CN225P6Z 003

Model: CM1633, 3700 PRO, GCF20FM, CM1663, 3700 GENSE, GCF20F, CM1662, 3700 ESSENTIAL, CM1635, CM1665B, 4700 GENSE, CM1638A, GCF20FA, CM1670A, CM1666

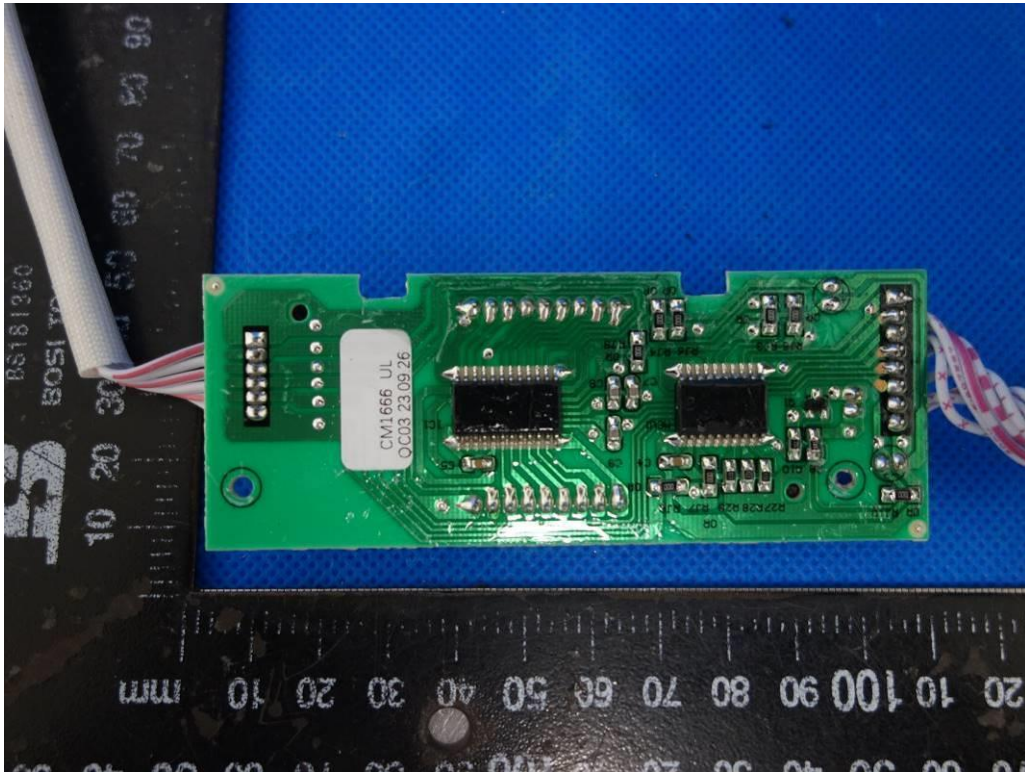


Figure 37. Control PCB view (CM1666)

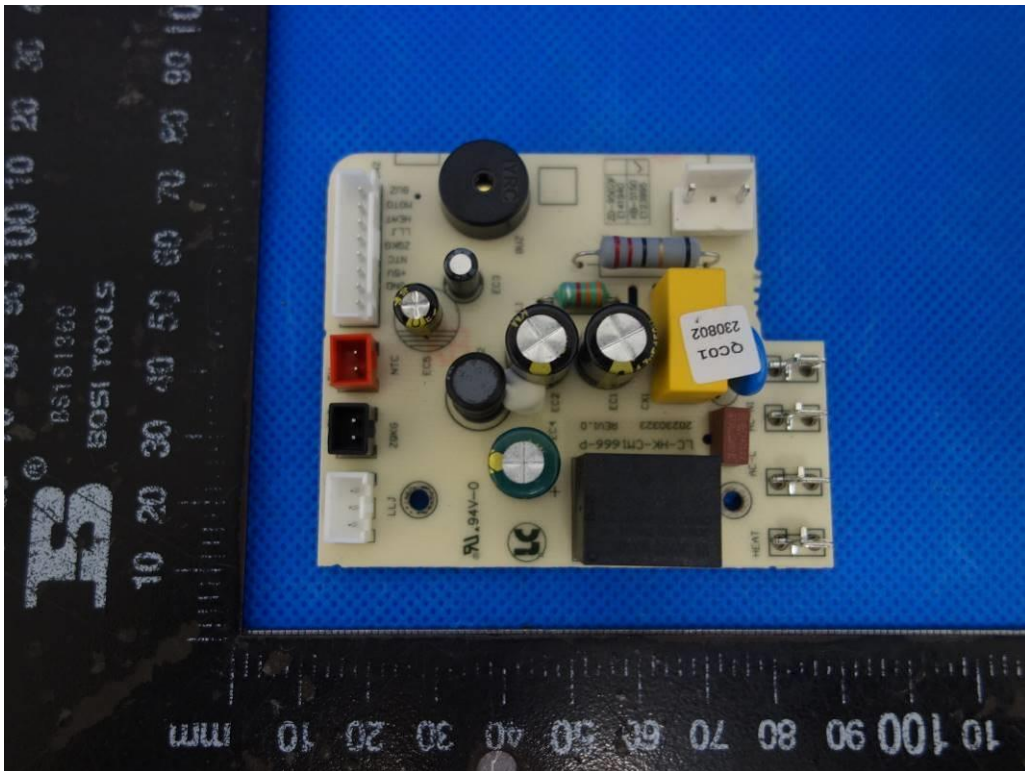


Figure 38. Main PCB view (CM1666)

Report Number: CN225P6Z 003

Model: CM1633, 3700 PRO, GCF20FM, CM1663, 3700 GENSE, GCF20F,
CM1662, 3700 ESSENTIAL, CM1635, CM1665B, 4700 GENSE, CM1638A,
GCF20FA, CM1670A, CM1666

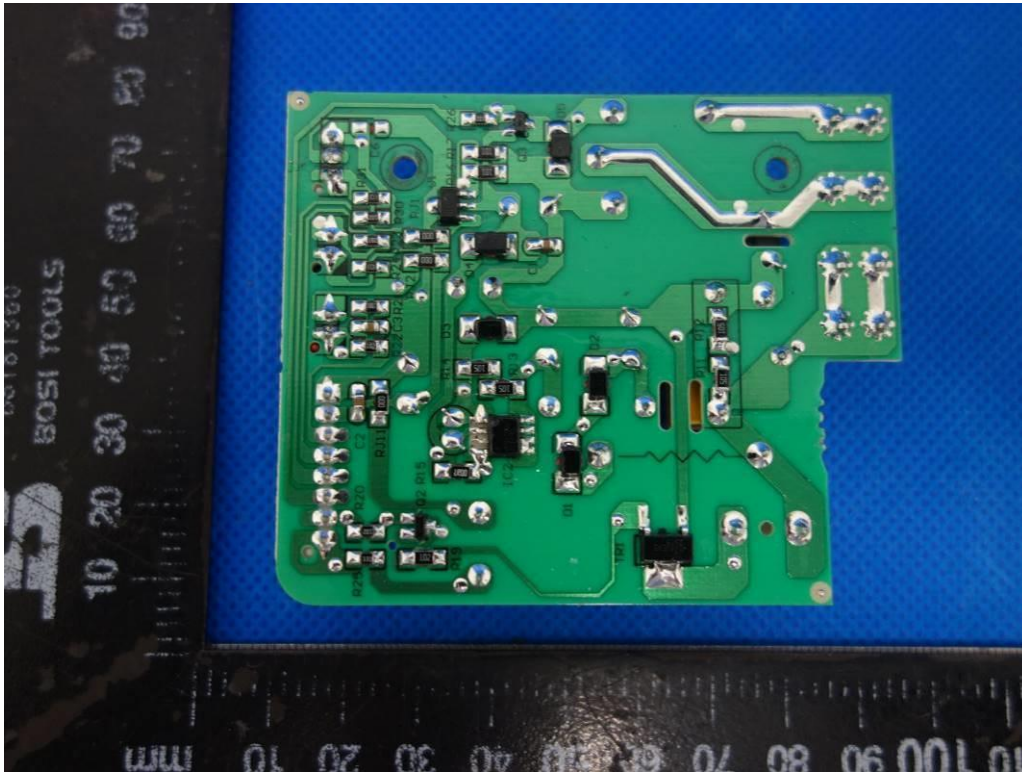


Figure 39. Main PCB view (CM1666)