

VELPEAU®



Knee Support
VP1206

Grey

VP1206



Black

VP1206C



[Product Name] : Knee Support

[Product Code] :

[VP1206] :

VP1206-S VP1206-M VP1206-L VP1206-XL VP1206-XXL

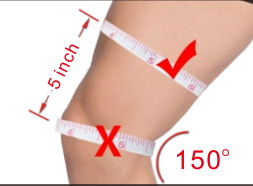
[VP1206C] :

VP1206C-S VP1206C-M VP1206C-L VP1206C-XL VP1206C-XXL

[Product Specifications] :

Size	Product code	Color	Thigh circumference (inch)	Left / Right
S	VP1206-S	Grey	13"-14 1/2"	Exchangeable
	VP1206C-S	Black		
M	VP1206-M	Grey	14 1/2"-16"	
	VP1206C-M	Black		
L	VP1206-L	Grey	16"-17 3/4"	
	VP1206C-L	Black		
XL	VP1206-XL	Grey	17 3/4"-20"	
	VP1206C-XL	Black		
XXL	VP1206-XXL	Grey	20"-22 1/2"	
	VP1206C-XXL	Black		

Measure the circumference of thigh. Please measure 5 inches above the kneecap. Choose the appropriate product size according to the measurements.

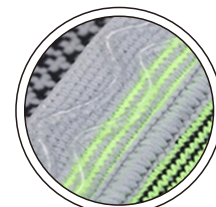


www.velpeau.com

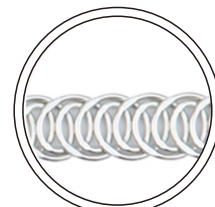
VELPEAU®



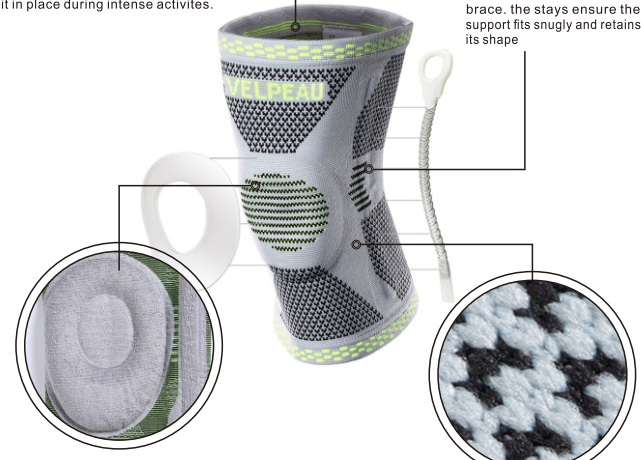
Shenzhen Weprotex Technology Product Co.,Ltd
 Add: 1710, Building 11, Phase II of Tian'an Yungu Industrial Park, Gangtuo Community, Bantian Street, Longgang District, Shenzhen, China
 Tel: 0755-89505533 E-mail: sales88@velpeau.com
 www.velpeau.com
 EC REP: No. 38, Boulevard Renard Benoit, 78680 Epone, France Made in China



▼ SILICONE GRIP GEL
Double silicone gel strips to lock it in place during intense activities.



▼ SPIRAL STAYS
Located on the sides of the brace, the stays ensure the support fits snugly and retains its shape



▼ VISCOELASTIC GEL PAD
Surrounds and cushions the kneecap to relieve pain in the knee and connective tissue

▼ HIGH ELASTICITY FABRIC
Breathable design absorbingsweat and keeps your knee dry and odor free

www.velpeau.com

[Product Features] :

- The use of high-quality spandex, nylon, and other materials ensures excellent elasticity, providing a comfortable and secure fit that prevents slipping while wearing.
- The knitted design follows ergonomic principles, applying balanced pressure for effective adjunct therapy.
- The seamless high-temperature compression technology ensures a comfortable wearing experience without friction on the skin..
- The silicone pad fits tightly around the patella, providing stability, massage, shock absorption, and protection.
- Enhances knee joint strength, reduces fatigue, improves endurance, and offers optimal knee protection.
- The soft and elastic metal spring support bars on both sides enhance knee joint explosive power during exercise.
- Features a stylish two-color design.
- Manufactured using advanced German machines, guaranteeing top-quality construction with no need for trimming.
- Double silicone gel strips ensure secure placement during intense activities, preventing the product from slipping down.

[Product Compounds] :

Nylon 45%, Silicone 20%, Spandex 18%, Polyester 9%, Stainless Steel 8%.

[Application] :

This product is designed to provide support and stabilization to injured knee areas, restricting movement and relieving pain. It serves as an adjunct therapy for partial damage, aiding in the recovery process.

[Precautions / Warnings] :

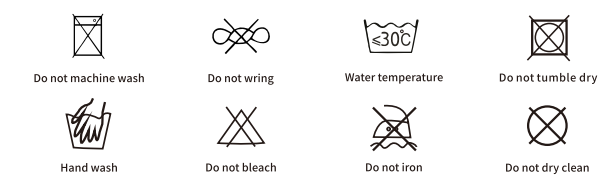
- Please consult a professional for guidance before using this product.
- Please use with caution if you have skin ulceration or open wounds. It is important to protect the affected area and avoid direct contact between the brace and the wound to prevent any potential discomfort or complications.

www.velpeau.com

[Transportation And Storage Conditions] :

The product can be transported using general means of transportation and stored at room temperature. However, it must be fireproof, moisture-proof, dustproof, rodent-proof, and insect-proof.

[Washing] :



[Term of Validity] : 5 years

[Production Date] : See the package

[Manufacturer] : Shenzhen Weprotex Technology Product Co., Ltd.

[Production Address] : 1710, Building 11, Phase II of Tian'an Yungu Industrial Park, Gangtuo Community, Bantian Street, Longgang District, Shenzhen, China

[After-sale Service] : Shenzhen Weprotex Technology Product Co., Ltd.

[After-sale Service Address] : 1710, Building 11, Phase II of Tian'an Yungu Industrial Park, Gangtuo Community, Bantian Street, Longgang District, Shenzhen, China

[Postcode] : 518129

[Tel] : +86 - 755-89505533

[E-mail] : sales88@velpeau.com

[Website] : www.velpeau.com

[Date of Preparation] : Jan.19,2017

[Modification Date] : Jul.15,2023

www.velpeau.com