

# VELPEAU®



Shoulder Sling  
VP0308

**[Product Name]** : Shoulder Sling

**[Product Code]** :

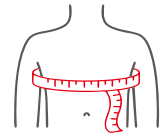
VP0308-S     VP0308-M     VP0308-L

**[Product Specifications]** :

Size	Product Code	Under bust (inch)	Left/Right
S	VP0308-S	27"-38"	Fits both
M	VP0308-M	38"-44"	
L	VP0308-L	> 44"	

**How to choose the right size?**

To choose the right size, please measure your under-bust circumference.



**[Product Compounds]** :

Polyester, Nylon, Polyurethane.

**[Application]** :

- Upper limb support.
- Immobilization after shoulder or elbow trauma.
- Postoperative and plaster fixation.
- Support for nerve paralysis or arm hemiplegia.

www.velpeau.com

**[Product Features]** :

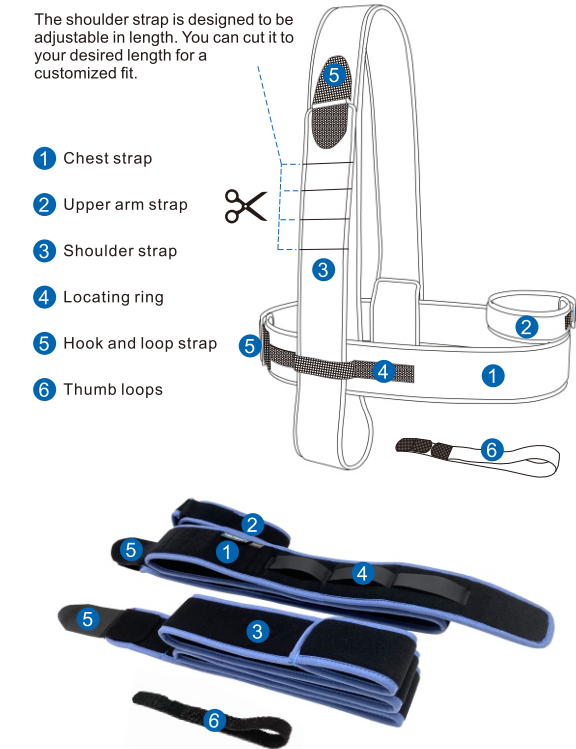
- Sleek and minimalistic design ideal for hot weather, allowing for maximum freedom of movement for your arms.
- Switchable shoulder straps for flexibility, evenly distributing weight and reducing strain on a single shoulder.
- Unique arm strap securely holding your arm in place.
- Filled with lightweight and soft foam, providing a comfortable fit without straining your neck or restricting blood circulation.
- External thumb loop to prevent hand fatigue.
- Neoprene-free and latex-free, ensuring non-irritating wear on the skin.
- Suitable for both left and right arm use.

**[Precautions / Warnings]** :

- Please consult a professional for guidance before using this product.
- This product is intended for adult and adolescent use only.
- It is designed for easy use, either independently or with the assistance of medical personnel or others when needed.
- If any discomfort occurs during use, adjust the tightness accordingly.
- The product is designed to be reusable, please wash the product with water before or after each use. Store it in a well-ventilated, dry place at room temperature.
- This product is designed for standalone use and should not be combined with other products. Its safety and effectiveness are not affected by external conditions.
- No specific special skills, knowledge, or training required for users. The product is made from materials that comply with the ROHS standard which is free from allergens or side effects on the human body.
- If there is an open wound on the skin, please consider bandaging the wound to prevent direct contact.

www.velpeau.com

**[Product Component]** :



www.velpeau.com



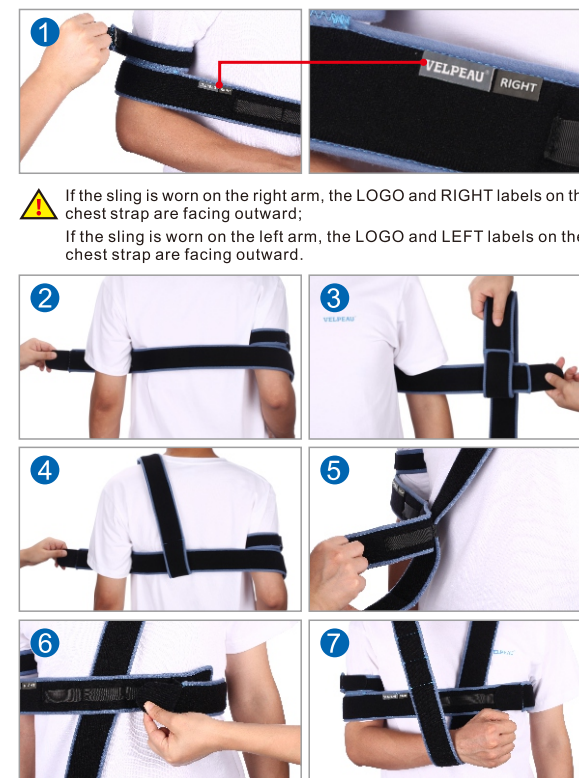
# VELPEAU®



Shenzhen Weprotex Technology Product Co.,Ltd  
Add: 1710, Building 11, Phase II of Tian'an Yungu Industrial Park, Gangtuo Community, Bantian Street, Longgang District, Shenzhen, China  
Tel: 0755-89505533    E-mail: sales88@velpeau.com  
www.velpeau.com

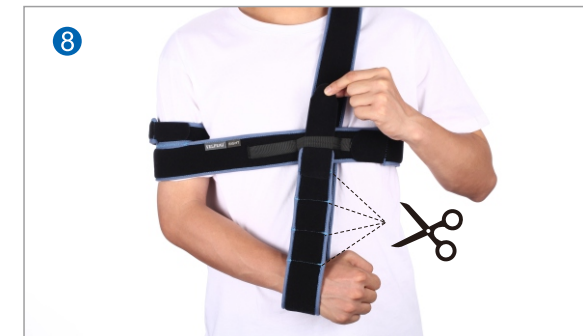
EC REP: No. 38, Boulevard Renard Benoit, 78680 Epone, France    Made in China

**[Wear Steps]** :



⚠ If the sling is worn on the right arm, the LOGO and RIGHT labels on the chest strap are facing outward;  
If the sling is worn on the left arm, the LOGO and LEFT labels on the chest strap are facing outward.

www.velpeau.com



If the shoulder strap is too long, you can cut them short according to your needs.



Step1  
Remove the  
Hook and loop  
fastener

Step2  
Cut off the excess  
shoulder strap on  
the cutting position

Step3  
Re-attach the Velcro  
to the shoulder strap

www.velpeau.com



Scan the code to watch  
the wearing steps

**[Instructions]** :

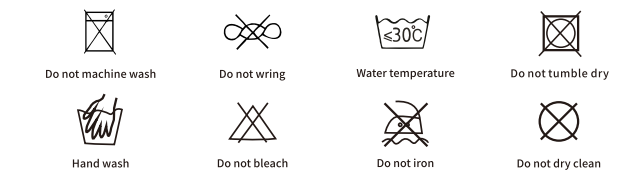
- Proper sizing can be achieved by following the wear step diagram in the manual or watching the detailed wearing video on the official website [www.velpeau.com](http://www.velpeau.com).
- It is important to check the strap tightness to ensure stability. Avoid making it too tight, which can restrict blood flow and hinder wound healing, or loose, which may result in inadequate support.
- The product is designed for easy assembly and disassembly, requiring simple attachment or detachment of the hook and loop fasteners.

www.velpeau.com

**[Transportation And Storage Conditions]** :

The product can be transported using general means of transportation and stored at room temperature. However, it must be fireproof, moisture-proof, dustproof, rodent-proof, and insect-proof.

**[Washing]** :



**[Term of Validity]** : 5 years

**[Production Date]** : See the package

**[Manufacturer]** : Shenzhen Weprotex Technology Product Co., Ltd.

**[Production Address]** : 1710, Building 11, Phase II of Tian'an Yungu Industrial Park, Gangtuo Community, Bantian Street, Longgang District, Shenzhen, China

**[After-sale Service]** : Shenzhen Weprotex Technology Product Co., Ltd.

**[After-sale Service Address]** : 1710, Building 11, Phase II of Tian'an Yungu Industrial Park, Gangtuo Community, Bantian Street, Longgang District, Shenzhen, China

**[Postcode]** : 518129

**[Tel]** : +86 - 755-89505533

**[E-mail]** : sales88@velpeau.com

**[Website]** : www.velpeau.com

**[Date of Preparation]** : Sep.18,2017

**[Modification Date]** : Jul.15,2023

www.velpeau.com