

VELPEAU®



Shoulder Abduction Sling VP0307



[Product Name] : Shoulder Abduction Sling (Limbs Immobilizer)

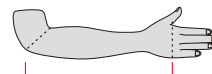
[Product Code] :
 VP0307-S VP0307-M VP0307-L

[Product Specifications] :

Size	Product Code	Forearm length (inch)	Under-bust (inch)	Left/Right
S	VP0307-S	9 1/2"-11"	22"-29"	Fits both
M	VP0307-M	11"-13 1/2"	29"-40 1/2"	
L	VP0307-L	> 13 1/2"	> 40 1/2"	

[Measuring Method] :

Please measure the distance from your elbow to your palm, which is the length of your forearm, and choose the appropriate size according to the measurement result.



[Product Compounds] :

Nylon, Polyurethane, Polyester, Cotton, Nylon, Polypropylene, Aluminium alloy, Polyether polyol.

[Product Features] :

The Y-shaped shoulder strap technique relieves pressure on the neck, it is designed to prevent strangling or cutting off blood circulation, and ensures comfortable wearing.

www.velpeau.com

All straps (shoulder strap, chest strap, and waist strap) are made of mesh fabric filled with sponges for ventilation, breathability, lightweight, and comfort.

The anatomically shaped abduction pillow conforms to the waist curve, providing a comfortable 30° of abduction. It provides firm support, preventing arm movement backward. The removable abduction foam cushion allows for 45° of abduction when installed.

The hand sports ball attached to the aluminum alloy support bar stabilizes the wrist and arm, improves blood circulation, and exercises hand muscles. The sling can be separated from the pillow and used independently.

Allows for active and passive movement of the hand, wrist, and elbow postoperatively by opening the arm sling without removing the entire sling.

Adjustable shoulder strap, chest strap, and waist belt for personalized fit and optimal positioning of the upper extremity.

Made of breathable 3D mesh fabric for long-wearing comfort and ventilation.

Includes two interior pockets for convenient storage of electronic devices, ID cards, and cash.

The product is neoprene-free and latex-free, ensuring no skin irritation.

Can be independently taken off and put on (depending on the specific condition).

Suitable for the left and right arm.

[Instructions] :

Proper sizing can be achieved by following the wear step diagram in the manual or watching the detailed wearing video on the official website www.velpeau.com.

It is important to check the strap tightness to ensure stability. Avoid making it too tight, which can restrict blood flow and hinder wound healing, or loose, which may result in inadequate support.

The product is designed for easy assembly and disassembly, requiring simple attachment or detachment of the hook and loop fasteners.

www.velpeau.com

[Product Component] :

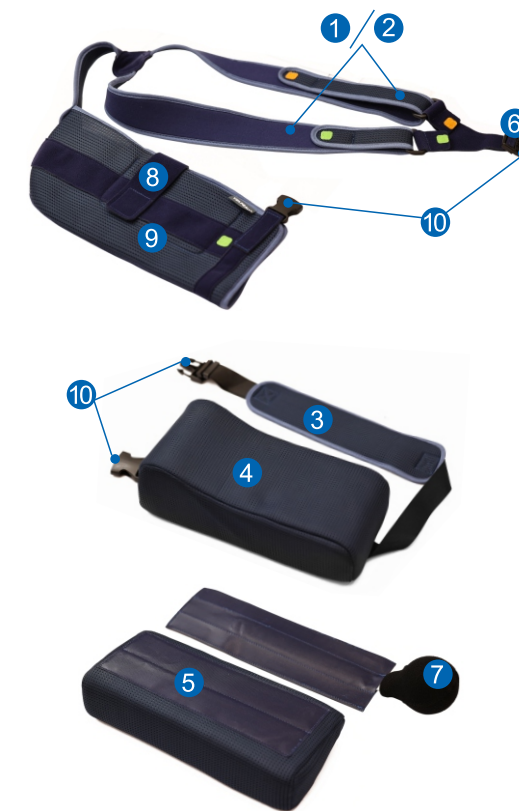


When the sling is worn on the right arm, the chest strap has an orange label; the shoulder strap has a green label.

When the sling is worn on the left arm, the chest strap has a green label; the shoulder strap has an orange label.

- 1 Shoulder strap
- 2 Chest strap
- 3 Cushioned waist strap
- 4 Abduction pillow
- 5 Removable abduction cushion
- 6 Arm sling
- 7 Hand sports ball (with support splint)
- 8 Arm strap
- 9 Storage pockets
- 10 Plastic buckle

www.velpeau.com



www.velpeau.com

[Application] :

- After stabilization of acromioclavicular joint dislocations.
- Rotator cuff repair surgery.
- Humeral head fractures.
- Shoulder endoprosthesis implantation.
- Impingement syndrome (nonsurgical, postoperative).
- Conservative or post-operative treatment after acute or chronic subacromial bursitis.
- After biceps tenodesis.
- Relaxation of the ventral limbus and of the capsule components after open and arthroscopic shoulder stabilisation.
- Relieve the pressure on the subacromial space (space under the roof of the shoulder joint).
- Prevent axillary tail adhesion.

[Precautions / Warnings] :

- Please consult a professional for guidance before using this product.
- This product is intended for adult and adolescent use only.
- It is designed for easy use, either independently or with the assistance of medical personnel or others when needed.
- If any discomfort occurs during use, adjust the tightness accordingly.
- The product is designed to be reusable, please wash the product with water before or after each use. Store it in a well-ventilated, dry place at room temperature.
- This product is designed for standalone use and should not be combined with other products. Its safety and effectiveness are not affected by external conditions.
- No specific special skills, knowledge, or training required for users. The product is made from materials that comply with the ROHS standard which is free from allergens or side effects on the human body.
- If there is an open wound on the skin, please consider bandaging the wound to prevent direct contact.

www.velpeau.com



VELPEAU®

Shenzhen Weprotex Technology Product Co., Ltd
 Add: 1710, Building 11, Phase II of Tian'an Yungu Industrial Park, Gangtuo Community, Bantian Street, Longgang District, Shenzhen, China
 Tel: 0755-89505533 E-mail: sales88@velpeau.com
www.velpeau.com
 EC REP: No. 38, Boulevard Renard Benoît, 78680 Epone, France Made in China

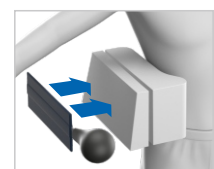
[Preparation Before Wearing] :

1 Installation and adjustment method of hand sports ball:

The distance from the ball hand can be adjusted by the support splint. To do this, remove the hook and loop fastening, then slide the splint along the guide until it is in the correct position, and then secure it with hook and loop fasteners.



The hand sports ball is installed on the outside of the abduction pillow and is installed with the hand sports ball facing outward.



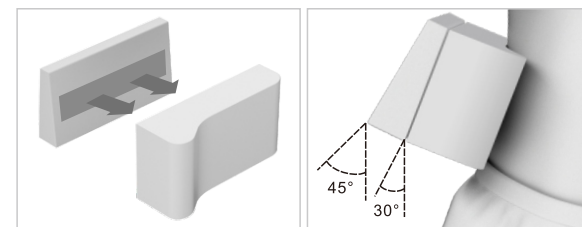
When adding removable abduction cushion, the hand sports ball shall also be installed on the outside of the removable abduction cushion.

2 Installation method of removable abduction cushion:

The removable abduction cushion can be installed to increase from 30° to 45° shoulder abduction.

The removable abduction cushion should be installed on the outside of the abduction pillow with the large end facing down and the straight edge facing inward.

www.velpeau.com



[Wear Steps] :

Identify the correct orientation of the sling:

When wearing the sling on the right arm, the green label should be on the shoulder strap, the orange label should be on the chest strap.

When wearing the sling on the left arm, the orange label should be on the shoulder strap, the green label should be on the chest strap.



Right

Left

www.velpeau.com



www.velpeau.com



Scan the code to watch the wearing steps



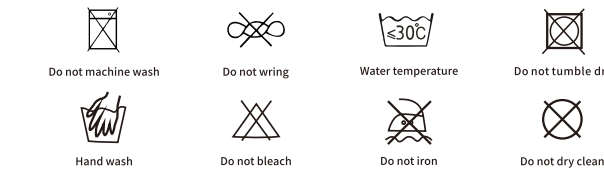
[Transportation And Storage Conditions] :

The product can be transported using general means of transportation and stored at room temperature. However, it must be fireproof, moisture-proof, dustproof, rodent-proof, and insect-proof.

www.velpeau.com



[Washing] :



[Term of Validity] : 5 years

[Production Date] : See the package

[Manufacturer] : Shenzhen Weprotex Technology Product Co., Ltd.

[Production Address] : 1710, Building 11, Phase II of Tian'an Yungu Industrial Park, Gangtuo Community, Bantian Street, Longgang District, Shenzhen, China

[After-sale Service] : Shenzhen Weprotex Technology Product Co., Ltd.

[After-sale Service Address] : 1710, Building 11, Phase II of Tian'an Yungu Industrial Park, Gangtuo Community, Bantian Street, Longgang District, Shenzhen, China

[Postcode] : 518129

[Tel] : +86-755-89505533

[E-mail] : sales88@velpeau.com

[Website] : www.velpeau.com

[Date of Preparation] : Sep.15,2022

[Modification Date] : Jul.15,2023

www.velpeau.com