

# VELPEAU®



Arm Sling  
VP0306

Comfort Version  
VP0306



Breathable Version  
VP0306B



www.velpeau.com

**[Product Name]** : Arm Sling ( Shoulder Immobilizer )

**[Product Code]** :

**[Comfort Version]** :  
 VP0306-S     VP0306-M     VP0306-L  
 VP0306-XL     VP0306-XXL

**[Breathable Version]** :  
 VP0306B-S     VP0306B-M     VP0306B-L  
 VP0306B-XL     VP0306B-XXL

**[Product Specifications]** :

Size	Product Code	Version	Colour	Underbust(inch)	Left/Right
S	VP0306-S	Comfort	Black	24"-29 1/2"	Fits both
	VP0306B-S	Breathable	Blue		
M	VP0306-M	Comfort	Black	29 1/2"-33 1/2"	
	VP0306B-M	Breathable	Blue		
L	VP0306-L	Comfort	Black	33 1/2"-41"	
	VP0306B-L	Breathable	Blue		
XL	VP0306-XL	Comfort	Black	41"-47"	
	VP0306B-XL	Breathable	Blue		
XXL	VP0306-XXL	Comfort	Black	47"-53"	
	VP0306B-XXL	Breathable	Blue		

www.velpeau.com

**[How To Choose The Right Size]** :

To choose the right size, please measure your under-bust circumference.



**[Product Features]** :

- **Comfortable Version:** Soft and foam-filled for comfort, with a perforated design for warmth and breathability, ideal for sleeping and winter.
- **Breathable Version:** Features lycell mesh fabric that is gentle on the skin, along with a multi-dimensionally breathable 3D inner core, making it suitable for hot summers.
- Easy self-application and removal with quick and convenient compression adjustment, ensuring no discomfort or circulation issues.
- Open design allows for wearing the product over the clothing.
- Built-in thumb loops provide hand support and prevent fatigue.
- Neoprene-free and latex-free, ensuring no skin irritation.
- Suitable for both left and right arms.

**[Product Comounds]** :

**Comfort Version:**  
Polyester, Cotton, Nylon, Polypropylene, Polyurethane.  
**Breathable Version:**  
Lycell, Polyester, Nylon, Polypropylene.

www.velpeau.com

**[Applications]** :

- Acute shoulder instability.
- Elbow injuries.
- Muscle and/or tendon pain injury, shoulder disorders.
- Immobilisation of the Shoulder & Elbow.
- Trauma to the Shoulder & Elbow.
- Postoperative care of rotator cuff surgery.
- Distortion, contusion, luxation of the shoulder.

**[Instructions]** :

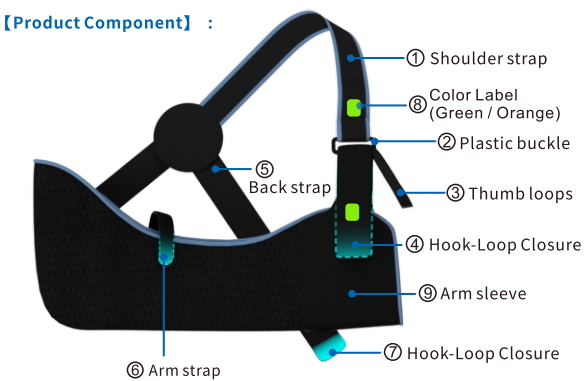
- Proper sizing can be achieved by following the wear step diagram in the manual or watching the detailed wearing video on the official website [www.velpeau.com](http://www.velpeau.com).
- It is important to check the strap tightness to ensure stability. Avoid making it too tight, which can restrict blood flow and hinder wound healing, or loose, which may result in inadequate support.
- The product is designed for easy assembly and disassembly, requiring simple attachment or detachment of the hook and loop fasteners.

**[Precautions / Warnings]** :

- Please consult a professional for guidance before using this product.
- This product is intended for adult and adolescent use only.
- It is designed for easy use, either independently or with the assistance of medical personnel or others when needed.
- If any discomfort occurs during use, adjust the tightness accordingly.
- The product is designed to be reusable, please wash the product with water before or after each use. Store it in a well-ventilated, dry place at room temperature.
- This product is designed for standalone use and should not be combined with other products. Its safety and effectiveness are not affected by external conditions.
- No specific special skills, knowledge, or training required for users. The product is made from materials that comply with the ROHS standard which is free from allergens or side effects on the human body.
- If there is an open wound on the skin, please consider bandaging the wound to prevent direct contact.

www.velpeau.com

**[Product Component]** :



**[Preparations Before Wearing]** : Please check whether the direction is correct for your arm?

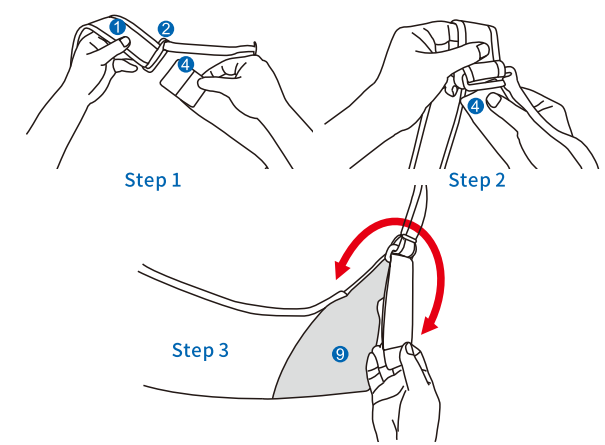
1. The green label is usually on the arm sleeve facing outwards while you received our product, which means it is for the right arm.



While green label facing outwards, it's for the right arm.

www.velpeau.com

2. If you want to wear it for your left arm, please take off the Hook-Loop Closure ④ from the Plastic Buckle ②, and then stick the Hook-Loop Closure ④ to the arm sleeve ⑥ through the Plastic Buckle ② from the other direction. ( Orange label facing outwards)



While orange label facing outwards, it's for the left arm.

www.velpeau.com

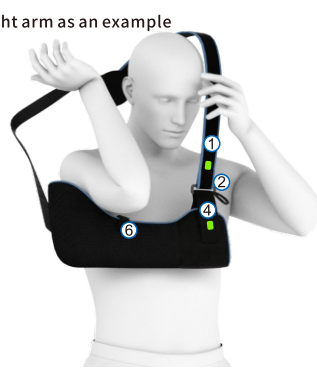
# VELPEAU®

Shenzhen Weprotex Technology Product Co., Ltd  
 Add: 1710, Building 11, Phase II of Tian'an Yungu Industrial Park, Gangloushi Community, Bantian Street, Longgang District, Shenzhen, China  
 Tel: 0755-89505533 E-mail: sales@velpeau.com  
 www.velpeau.com  
 ECEP: No. 39, Boulevard Renard Benoit, 78680 Epone, France Made in China

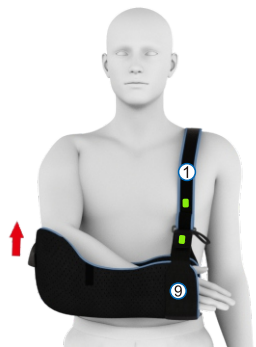


**[Wearing Steps]** : Taking the right arm as an example

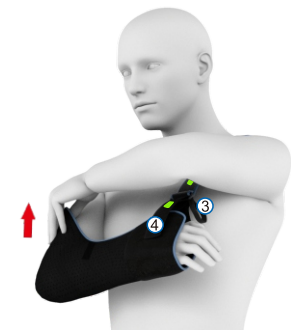
**Step 1:** Hang the product on your shoulder (the back strap ⑤ is behind you at this time, ignore it for now).



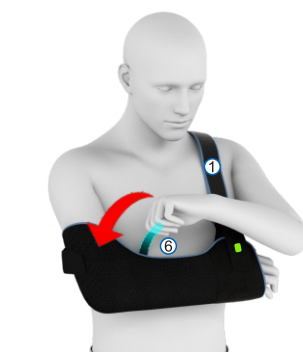
**Step2:** Place your forearm into the arm sleeve ⑥.



At this point, you can pull up from where the tag is sewn in and put your arm completely in like this.

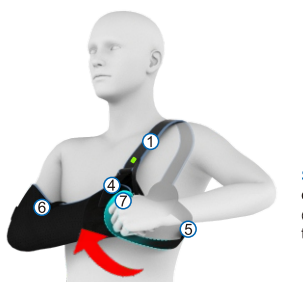
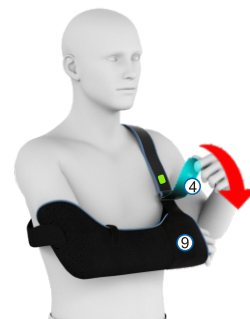


www.velpeau.com



**Step 3:** Attach or fasten the arm strap ⑥

**Step 4:** You may pull down the Hook-Loop Closure ④ to adjust its position on the arm sleeve ⑥ to make your arm comfortable.



**Step 5:** Pull the back strap ⑤ over waist to front and secure it ⑦ on the outside of your wrists to prevent arm swinging.

www.velpeau.com



**Step 6:** Hang the thumb loop ③ around the thumb and attach it to the product so that the thumb can hang on it.

Scan the code to watch the wearing steps



www.velpeau.com

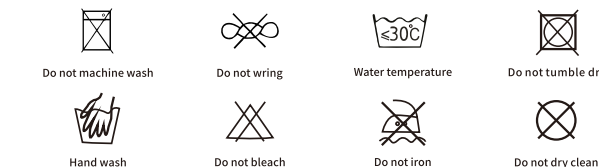


**[Transportation and Storage Conditions]** :

The product can be transported using general means of transportation and stored at room temperature. However, it must be fireproof, moisture-proof, dustproof, rodent-proof, and insect-proof.

www.velpeau.com

**[Washing]** :



**[Term of Validity]** : 5 years

**[Production Date]** : See the package

**[Manufacturer]** : Shenzhen Weprotex Technology Product Co., Ltd.

**[Production Address]** : 1710, Building 11, Phase II of Tian'an Yungu Industrial Park, Gangloushi Community, Bantian Street, Longgang District, Shenzhen, China

**[After-sale Service]** : Shenzhen Weprotex Technology Product Co., Ltd.

**[After-sale Service Address]** : 1710, Building 11, Phase II of Tian'an Yungu Industrial Park, Gangloushi Community, Bantian Street, Longgang District, Shenzhen, China

**[Postcode]** : 518129

**[Tel]** : +86-755-89505533

**[E-mail]** : sales@velpeau.com

**[Website]** : www.velpeau.com

**[Date of Preparation]** : Jan.9,2017

**[Modification Date]** : Jul.8,2023

www.velpeau.com