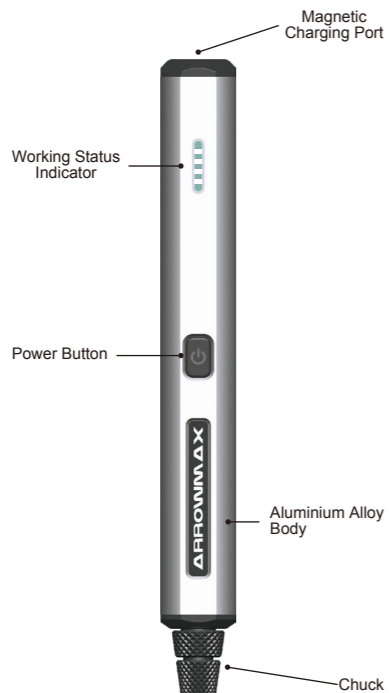


SGS MINI Electric Engraving & Polishing Pen Structure Diagram



Thank you for choosing SGS MINI (Electric Engraving & Polishing Pen). Please read the instructions manual carefully.

Product description:

SGS MINI design has only one power button, and light dynamic display of working status.

The SGS MINI handle comes in quadratic shape with curved surface to achieve the best control and grip during operation. The specially formulated high-capacity LiPo battery makes more efficient use of the internal space of the product, and the LiPo battery capacity reaches 350mAh. With magnetic charging design, it can be used for 1.5 hours when fully charged in 60 minutes. The standby time can be up to 60 days, and the LiPo battery we use has passed the US TUV certification.

SGS MINI is simple to replace the bit, just loosen the chuck to remove and insert the bit, tighten the chuck for immediate operation.

SGS MINI comes with aluminum alloy storage box, which is convenient for storage and management of all accessories. Containing 12 polishing bits and 24 engraving bits. The parts are CNC precision machined, so that every work can be precise and agile!



- ① - Inner Box
- ② - SGS MINI Electric Engraving & Polishing Pen
- ③ - Polishing bit
- ④ - Storage Box



- ⑤ - Engraving bit

Storage Instructions:

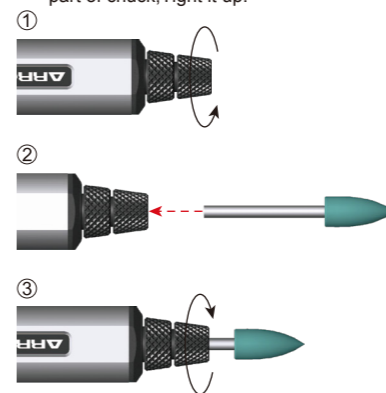
- ✓ Press the top of the storage box, the inner box of the storage box pops out to open.
- ✓ Press the top of the inner box once more to close the storage box.

SGS MINI storage:

- ✓ The SGS MINI is fixed in the inner box of the storage box in the form of a buckle.
- ✓ After use, place the SGS MINI back into inner box.
- ✓ Polishing bits & engraving bits are fixed in the inner box.
- ✓ After use, place the polishing bits & engraving bits back into position.

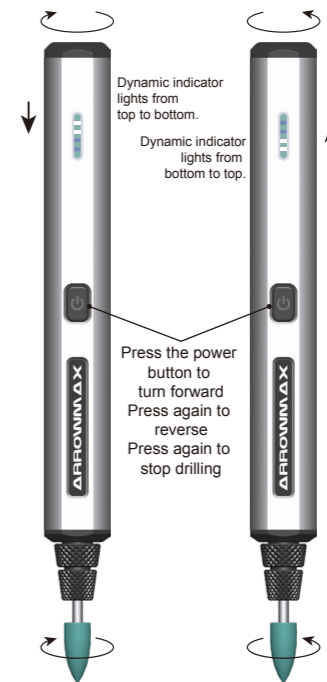
Installation of bits:

- ✓ Take out the bit from the inner box of the storage box. There are two parts of chuck.
 - 1: Hold the bottom part of chuck, then loose the chuck.
 - 2 Place the bit.
 - 3 Hold the bottom part of chuck, Tight it up.



Working Status:

Press the power button, dynamic indicator lights from bottom to top, the polishing bit is in forward direction. Press the power button again to stop. The indicator shows the current remaining battery: 4 lights (100%) / 3 lights (75%) / 2 lights (75%) / 1 light (25%). Speed and direction can be adjusted through the ARROWMAX app. In reverse mode, four indicators light up from bottom to top dynamically.



Product parameters:

Product model: SGS MINI
Battery voltage: 3.7V
Size: 15 x 15 x 126 mm
LiPo battery: 350 mAh
Weight: 48g
No-load speed: 20000r/min
Charging time: 60 minutes

Product list:

- (1) SGS Mini Electric Engraving & Polishing Pen
- (1) Aluminum alloy storage box
- (1) Type-C USB magnetic cable
- (12) Polishing bits
- (24) Engraving bits

SGS MINI 雕刻拋光筆 結構圖



感謝您使用本公司的迷你雕刻拋光筆。為了讓您更好的體驗產品，請仔細閱讀說明書。

產品描述

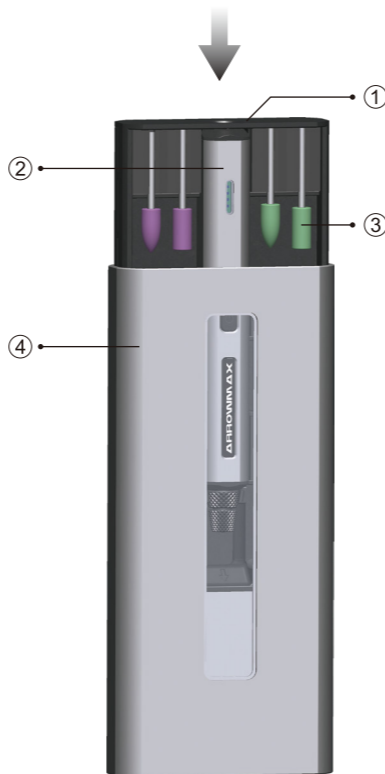
SGS MINI 設計只有一個開關鍵，並設計四顆藍色指示燈動態顯示工作狀態。

SGS MINI 可以通過於Android和IOS的 ARROWMAX 專屬手機應用程序以500rpm自定義轉速和每個模式的轉動方向，輕鬆個人化你的SGS MINI。

SGS MINI 手柄採用了方形帶圓弧面的形狀，使得工作期間更好控制雕刻拋光筆，握感更舒適。特殊配製的高容量鋰電池，更有效地利用了產品的內部空間，鋰電池容量達到350mAh，使得SGS MINI 的工作時間比其他產品更長。採用磁吸充電設計，只要充電60分鐘即可使用1.5個小時，待機更可長達60天，所用鋰電池更通過了美國TUV認證。

SGS MINI 在更換拋光頭/雕刻頭時的操作也相當簡單，不需要使用其它工具，只要扭開夾頭即可輕鬆取出、置入拋光頭/雕刻刀，接著鎖緊夾頭即可立即操作。

SGS MINI 採用了鋁合金收納盒，方便所有配件的存放和管理。收納了12支拋光頭和24支雕刻頭，從裡到外的零件均採用CNC精密加工，在電腦程式準確控制之下確保一致的高品質，讓每次工作都能精準利落！



① - 收納盒內盒
② - 迷你雕刻拋光筆
③ - 拋光頭
④ - 收納盒外殼



⑤ - 雕刻頭

收納盒開合

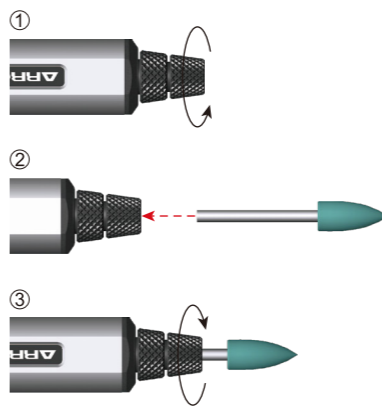
按壓收納盒頂部，收納盒內盒彈出開啓。
再次按壓收納盒內盒頂部，收納盒閉合。
注意：按壓收納盒內盒後，內盒彈出，此時內盒易滑落。

雕刻拋光筆收納

雕刻拋光筆以卡扣形式固定於收納盒內盒。
使用完畢後，將雕刻拋光筆按壓歸位內盒中。
拋光頭/雕刻頭收納
拋光頭/雕刻頭以卡扣形式固定於內盒中。
使用完畢後，將拋光頭/雕刻頭按壓歸位內盒中。

拋光頭/雕刻刀安裝

從收納盒內盒中取出拋光頭/雕刻頭，①向右邊扭開夾頭；②置入拋光頭/雕刻頭，③接着向左邊鎖緊夾頭即可立即操作。



工作狀態

- 按住開關鍵，四顆指示燈由上往下依次亮起（動態顯示），代表雕刻拋光筆進行正轉；
- 再按停止。指示燈顯示當前剩餘電量：4顆燈亮（100%）/ 3顆燈亮（75%）/ 2顆燈亮（75%）/ 1顆燈亮（25%）。
- 可通過ARROWMAX應用程序調整轉速和轉動方向。反轉模式下，雕刻拋光筆進行反轉，四顆指示燈由下往上依次亮起（動態顯示）。



產品參數

產品型號:SGS MINI
尺寸:15x15x126mm
重量:48g
充電時長:60分鐘

電池電壓:3.7V
鋰電池:350mAh
空載轉速:20000r/min

產品清單

- 迷你雕刻拋光筆x1
- 鋁合金收納盒x1
- 磁吸充電線x1
- 拋光頭x12
- 雕刻頭x24