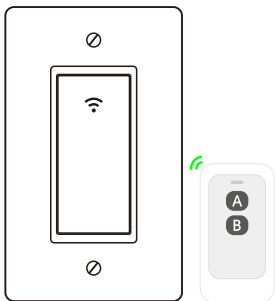


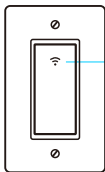


Single-pole Smart Light Switch

User Manual



Specifications



Smart Light Switch

Power/WiFi
Indicator



Remote Control

Model: AWS06F

Input voltage: AC 100-240V

Rated Frequency: 50/60Hz

Max.Current: 15A

Max.Power: 800W

Remote Control: Bluetooth

WiFi: IEEE 802.11 b/g/n

Wireless standard : Wi-Fi 2.4G



1. Product Introduction



The lighting fixture controlled by the Wi-Fi in-wall smart switch must not exceed 800 watts. The smart switch is designed only for single-pole use and Neutral Wire required.

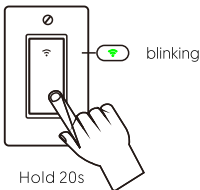
1.1 Indicator description



- Red light:**
the state of the room light is on
- Blue light:**
the room light is off
- Green light:**
Wi-Fi distribution network indicator

1.2 Method of restoring factory state

Press and hold the smart switch button for 20 seconds until the smart switch indicator is blinking.



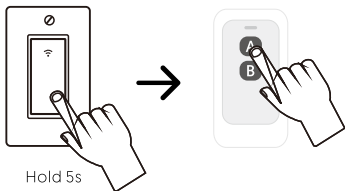
1.3 Remote pairing and deletion methods

One smart light switch can be paired with four remotes at most. One remote key can only control one smart light switch.

1. How to pair the remote with smart switch?:

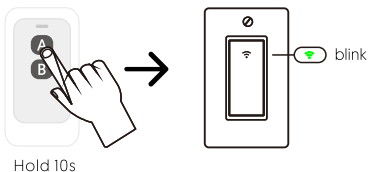
Step 1. Press and hold the smart switch button for 5 seconds until the switch indicator change to blinking slowly

Step 2. Press and hold the remote key "A" or "B" until the smart switch indicator stop blinking, paired successfully.



2. How to delete the remote with smart switch?

Press and hold the remote key for 10 seconds until the smart switch indicator flashes rapidly for 2 seconds, release your finger, then the paired key is invalid now.



2. Smart Light Switch Installation

2.1 Tools you need



Screwdriver

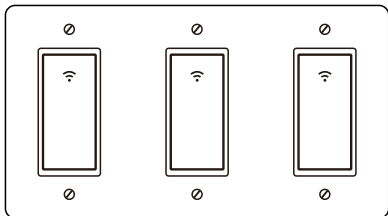
Pliers

Electrical Tester

2.2 Combined 2gang, 3 gang Switches



The side angle of the sheet metal can be disassembled. 2gang or 3gang switches can be seamlessly connected together, which fully conforms to the size of the home switch box.



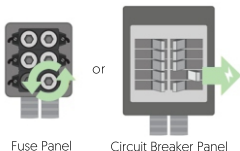
2.3 Physical Installation

Before you begin:

- The AvatarControls smart light switch can replace existing single-pole light switches, NOT 3-way.
- Make sure your home has a neutral wire in the wall where you want to install the smart light switch. If your house was built or remodeled before mid-80's, you may not have a neutral, please try another location or call an electrician for help.
- Check the Wi-Fi signal on your phone at the spot where you'll install the dimmer to make sure the Wi-Fi is strong. It only works on your 2.4 GHz wireless band.
- Keep your mobile device close to the smart light switch until setup is complete.
- The supported maximum wattage rating is: 800W.

Step 1: Turn the power OFF.

Shut OFF power to the light switch you are replacing at the circuit breaker or fuse box.

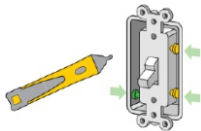


WARNING! Risk of electric shock!

Incorrect installation could be dangerous or illegal. Multiple breakers/fuses may need to be turned OFF for safe installation. Please call a professional electrician if you are unfamiliar or uncomfortable with electrical work.

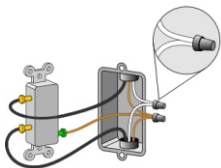
Confirm that the power is turned OFF

Remove the cover plate from the existing switch. Use a voltage tester to test BOTH sides of the switch. You may need to turn OFF more than one circuit breaker/fuse.



Step 2: Find the neutral wires.

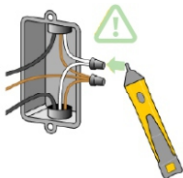
Unscrew the existing switch and gently pull it out of the wall. Look for the neutral wires, usually white. You need these to install the smart light switch. Continue ONLY if you have the neutral wires.



NOTE: You may have a different color and number of neutral wires than shown.

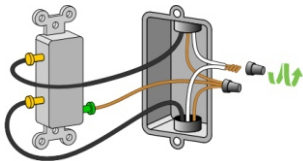
Test the neutral wires

Use a voltage tester to check that there is no power in the neutral wires from neighboring circuits. If necessary, shut OFF additional circuits until no voltage is found.



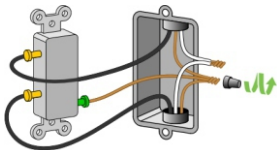
Disconnect the neutral wires

Unscrew the wire nut connecting the neutral wires.



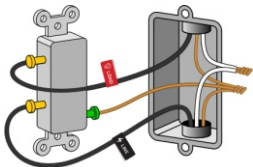
Step 3: Find the ground wires.

Look for the ground wires (usually green or solid copper) and unscrew the wire nut connecting them.



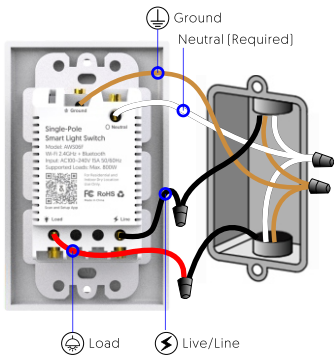
NOTE: You may have a different color and number of ground wires than shown.

Step 4: Find and label the line and load wires.



NOTE: Your existing wires may be in different locations than shown. Never label wires while the power is turned ON.

Step 5: Connect the Smart Light Switch wires.



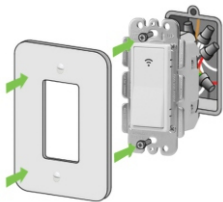
IMPORTANT: Make sure the power is turned OFF before you proceed. Your existing wires may have different colors than those shown.

Step 6: Install the Avatar switch into the wall.

Almost done! Tug on each wire nut to make sure they are secure on the wires.

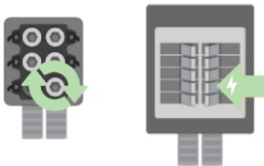
Insert the Avatar switch into the box. It could get crowded in there.

Screw the Avatar switch into the wall and snap on the cover plate. Be careful not to over-tighten the screws.



Step 7: Turn ON the power.

Turn ON the power on your smart light switch at the fuse panel or circuit breaker panel.



3. Install APP

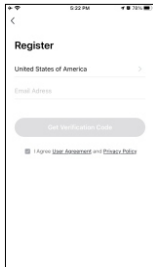
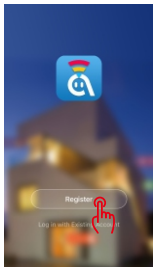
Simplified steps to install the AvatarControls App on your smart device and pair with Amazon Alexa and Google Assistant using AvatarControls App on Apple Store or Google Play marketplace. Compatible with any smart phone or tablet including both Android and IOS systems.

3.1 Download AvatarControls App

Download AvatarControls from Apple Store or Google Play Store or scan the QR code below to install the Avatar Controls APP for either iOS or Android.



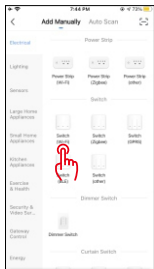
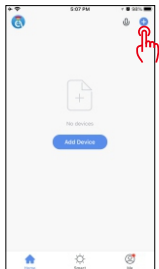
3.2 Register an account in AvatarControls APP



- Open AvatarControls APP into account registration page,click on the "Register"
- At the registration page, select your region and enter the email to create a new account.(Phone number is not available)
- After successful registration, you can add device on your APP now.

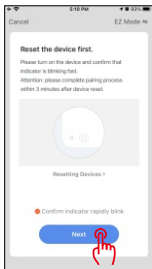
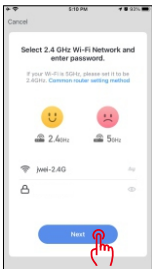
4. Add devices

Step1. After login to AvatarControls APP, click on "+" to add devices. Select "Electrical" -> "Switch" category, tap "Switch(Wi-Fi)" product icon.



Step 2. Select the Device Work Wi-Fi and enter the password, then start the configuration of the device. Follow the in-APP instruction to connect the Avatar remote switch to your Wi-Fi network.

- Please make sure the Wi-Fi is strong & 2.4 GHz wireless band.
- Keep your mobile device close to the Avatar remote switch until setup is completed.



Step 3. Active the Avatar switch to Wi-Fi connection mode

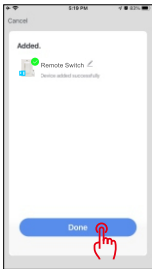
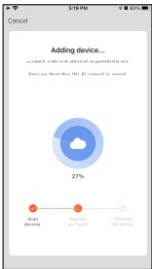
AvatarControls APP supports two types of configuration modes: EZ mode and AP mode.

EZ mode: Turn off the luminaire first. The switch indicator will be blue. Press and hold the switch button for 20 seconds and release. The indicator light will blink rapidly. [About twice per second] .

AP mode: Under EZ mode, continue to press and hold the switch button for 20 seconds and release, the switch indicator will blink slowly. [About once 2 seconds].

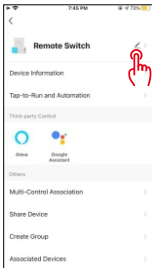
If the switch can not be paired in EZ mode [blink rapidly], please change to AP mode [blink slowly]. After entering the "Add Device" page , confirm whether the Smart Light Switch is EZ mode.

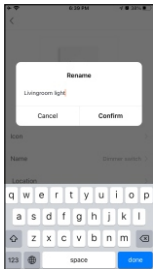
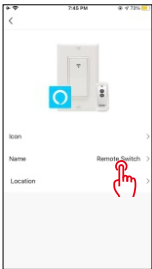
Step 4. "Device added Successfully" will be displayed after a successful operation.



Rename the device

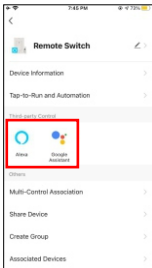
After the device be added successfully, click the device description text to modify device name. The name of the device is recommended to use easy pronunciation of the English words.

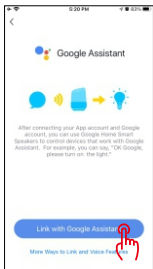




5. Control Your Smart Switch with Amazon Alexa/Google Assistant

- 1 Tap the edit menu of the smart light switch panel
- 2 Tap the 3rd-party control icon to be operated
- 3 Sign in with your Amazon Alexa or Google Home account.





Now you can use your voice to control the light:

Alexa, turn on livingroom light
Alexa, turn off livingroom light

or

Hey Google, turn on livingroom light
Hey Google, turn off livingroom light

6. Troubleshooting and FAQ

1. What should I do when I cannot turn smart light switch on or off?

- Make sure your mobile devices and the smart light switch are connected to the same Wi-Fi network.
- Make sure your smart light switch is power on.

3. What should I do when device configuration process has failed?

You could:

- Check whether the smart switch is powered on or not.
- Check whether your mobile device is connected to 2.4Ghz Wi-Fi network.
- Check your network connectivity. Make sure the router is working properly.
 - If the router is dual-band router, select 2.4G network and then add smart switch.
 - Enable the router's broadcasting function.
 - Configure the encryption method as WPA2-PSK and authorization type as AES, or set both as auto.
 - Check for Wi-Fi interference or relocate the smart dimmer switch to another location within the signal range.
 - Check whether the router's connected devices reach the amount limit. Please try to turn off some devices' Wi-Fi function and configure smart switch again.
 - Check if router's wireless MAC filtering function is enabled. Remove the device from filter list and make sure the router is not prohibiting smart switch from connection.
- Make sure the password of your Wi-Fi network entered in App is correct when adding smart switch.
- Make sure the smart switch is ready for App-Config: the indicator light is quick blinking [twice per second] for

- ✦ Quick mode configuration. slow blinking (once every 3 seconds) for AP mode configuration.
- Repeat the App-Config process.
- Reset the smart switch to default setting and try to add it again.

4. Can I control device through 2G/3G/4G cellular network?

The smart switch and the mobile device are required to be under the same Wi-Fi network when adding the smart switch for the first time, after successful device configuration, you can remotely control the device through 2G/3G/4G cellular network.

5. How can I share my device with family?

Open your App, go to "Home" -> tap your smart switch icon -> tap "edit menu" icon-> tap "Share Device"->tap "Add sharing", fill your family account info then you can share the device with added family members.

Need Help?



Operating Videos



Service Online

 service@avatarcontrols.com