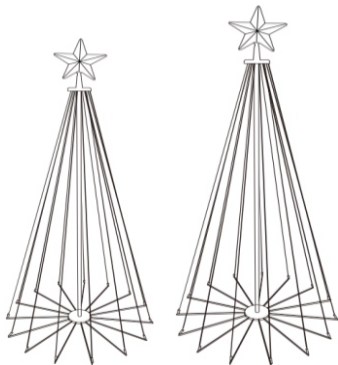


# 6FT/8FT Cone Tree Christmas Lights

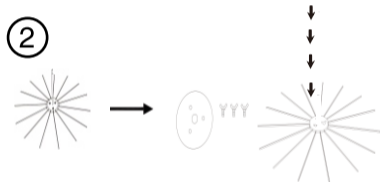
## User Manual

(for US market)

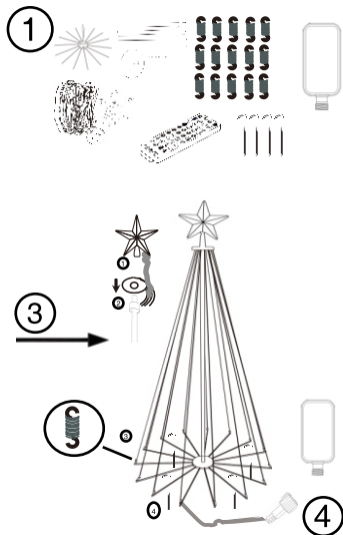


# Installation Guidelines

1. Check the list of products to ensure that you have all the necessary components.
2. Assemble the metal bracket according to the instructions provided.

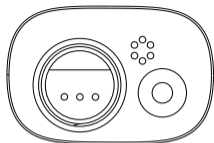


3. Install the tree top star and string lights.
4. Connect the power supply to the lights.



## Specifications

Color	RGB
Power supply	Adapter
Input voltage	100-240V
Control method	Remote/ APP Control / Control box
Working temperature	-20°C-50°C



Dimmable, 16Million Color, Music Sync, App Control, Local control.

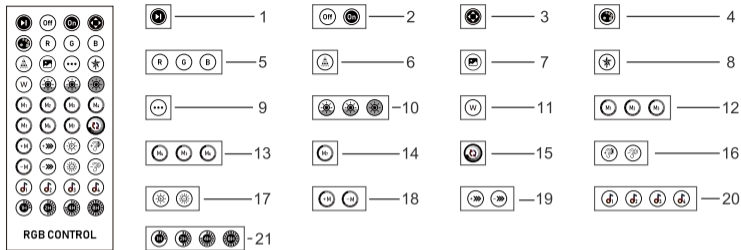
 **Please note that all colorful string lights cannot be DIY cut !**

1. Quickly double-click the button to control the On/Off of the string light.

2. Long press the button for three seconds. The colored light, music, and scene modes will cycle in sequence.

3. In the colored light mode, click the button to switch to the next color, then cycle in sequence; in the music mode, click the button to switch to the next music rhythm mode, then cycle in sequence; in the scene mode, click the button to switch to the next scenes, then loop in turn.

## IR Remote Controller 40 KEY



1. Pause/ Run Button.

2. Turn On/ Off.

3. Shift upward/ down/ left/ right/ flash/ solid.

4. Color Wheel — Press it to switch colors in between.

5. LED Color Single Button — Quickly switching red, green and blue modes.

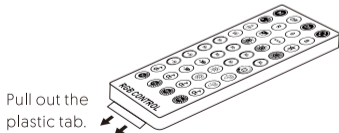
6. Cycle through fixed scene modes.

7. Cycle through graphics scene modes.

8. Treetop Star Button — On/ Off, fixed light, follow the light modes.

9. Toggle text display or to be defined.
10. Brightness Buttons — from left to right[ 25%, 50%, 100% ].
11. Cool/ Warm White Button.
12. Three fixed scene mode switching.
13. Three graphics scene mode switching.
14. Text scene mode or to be defined.
15. Theme single scene mode loop, switching one every 30 seconds.
16. Music mode sensitivity adjustment [+/-].
17. LED brightness adjustment [+/-].
18. Switch single scene mode and music mode from previous to next.
19. Scene mode speed adjustment [+/-].
20. 4 music modes.
21. Timing Function — 1hour, 2 hours, 4 hours, 8 hours.

Please pull out the plastic tab from the bottom of the IR remote to ensure that the battery is powered properly.



Make sure the IR remote aims at the IR receiver within the sensing distance. The angle of the IR receiver is 120 and the sensing distance is 5 meters. Please remotely control within the sensing range.

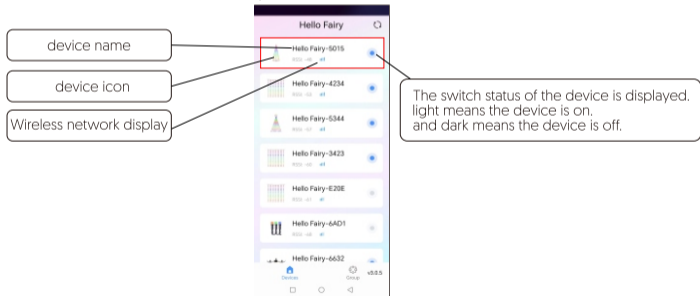
1.Download"Hello Fairy"from iOS APP Store/ Google Play, or scan the QR code to install the "Hello Fairy" [ either iOS or Android ].



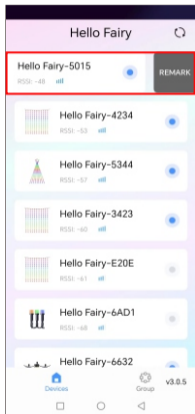
## Connect mobile phone

1. Plug in the power, then turn on the string light switch.
2. Turn on the mobile phone Bluetooth.
3. Open the Hello Fairy APP on the mobile phone and search for the device "Hello Fairy -xxx".
4. After the device name is displayed on the interface, you can click "Hello Fairy -xxx" to enter the main interface and start the operation.

Open the APP interface

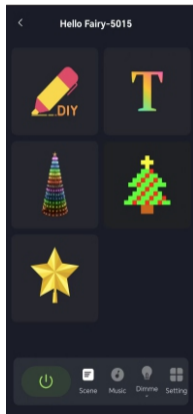


Rename the device name.



Click the device name and swipe left to quickly rename the device name.

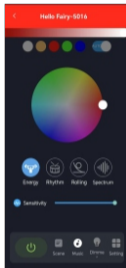
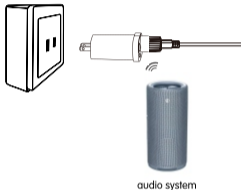
Into the home page





## Music rhythm

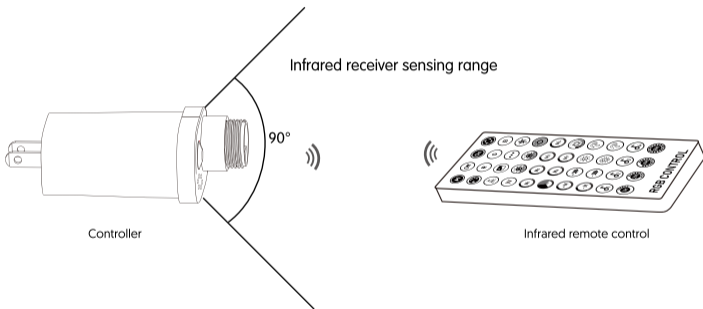
Adjust the sensitivity of the controller and the volume of the music according to the usage environment to achieve the desired lighting rhythm effect.



- 1.The closer the speakers are to the controller, and after adjusting the sensitivity of the controller, the better the music rhythm effect.
- 2.The louder the music, and after adjusting the sensitivity of the controller, the better the music rhythm effect.
- 3.If some of the lights in the light string are still on when the speakers are not playing any music, it may be due to environmental noise. In this case, adjust and lower the sensitivity of the controller to automatically turn off the light string.
- 4.Different controllers have different sensitivity levels. Adjust the sensitivity of the controller according to the usage environment to achieve the desired music rhythm effect.

## Remote control method

Ensure the infrared remote control is aimed at the infrared receiver within its sensing range. The infrared receiver has a receiving angle of  $90^{\circ}$  and a sensing distance of up to 5 meters.



## FCC Statement

This device complies with part 15 of the FCC Rules. Operation is subject to the following two conditions:  
[1] This device may not cause harmful interference, and [2] This device must accept any interference received, including interference that may cause undesired operation.

## RF Exposure Information

The device has been evaluated to meet general RF exposure requirement. The device can be used in portable exposure condition without restriction.

## Warning

1. Please pay attention to prevent static electricity during the installation and use of the product. Do not use sharp objects to touch the product, and avoid contact to the strong chemicals such as strong acid and alkali.
2. During installation, the bent part should be avoided just in the position of the LED components, so as not to damage the product and affect its service life.

## Warranty description

This product has one-year warranty from the day after signing. Please contact us if you have any questions or issues.

