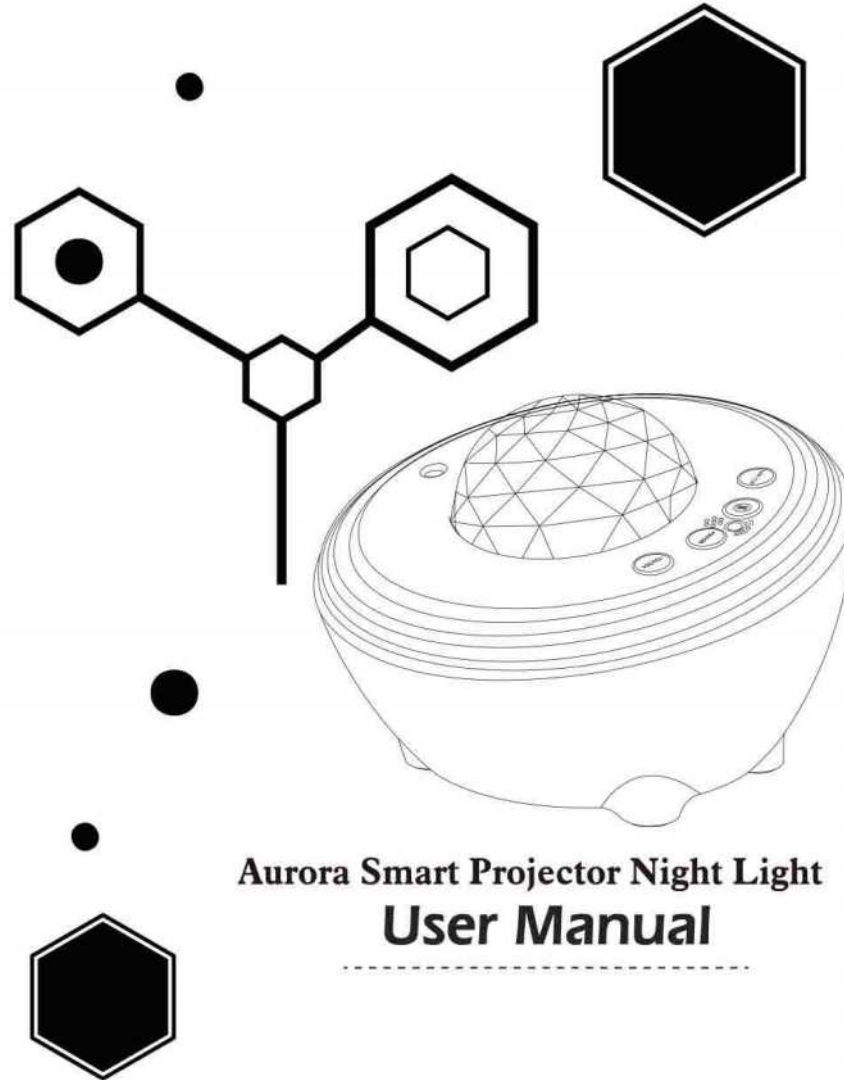
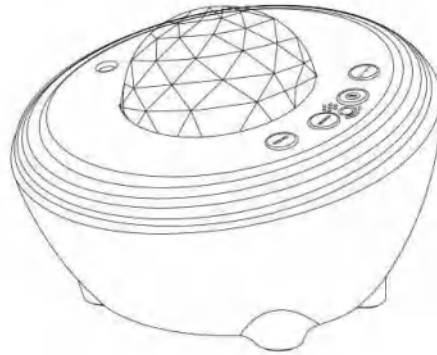


# ANBUY<sup>®</sup> STARRY



**Aurora Smart Projector Night Light**  
**User Manual**

---



### Unboxing Check

Thank you for purchasing our products, please read the instruction manual carefully before use. Instruction manual contains necessary safety advice and user instructions, follow the instruction manual to operate in order to avoid damaging the product for misuse. Check whether the product is damaged or not when you receive the product.

### Package list:

- Aurora Smart Projector Night Light x 1
- Remote Controller x 1
- USB Cable x 1
- User Manual x1

### Notice:

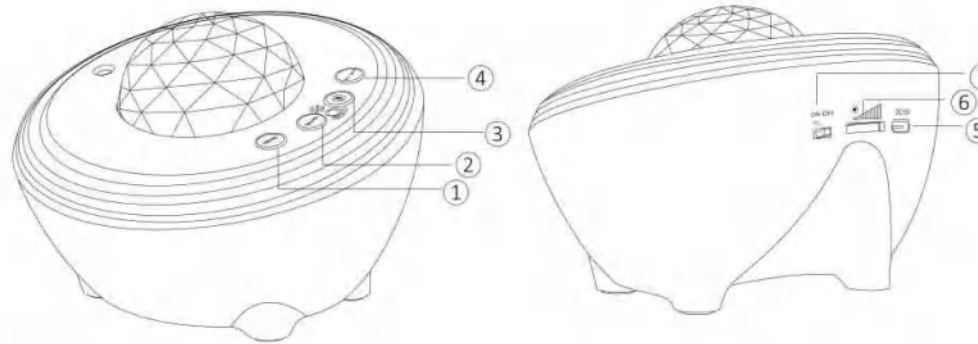
1. Strictly in accordance with the instructions of this operation, do not disassemble the host and accessories.
2. This product is suitable for indoor use, please do not use the light shone directly in eyes and keep away from children.
3. The product is projected by LED and stars combinations.
4. This product only supports 2.4GHz Wi-Fi, not 5GHz Wi-Fi.

### How to use:

1. Indoor use, projecting in the sky direction.
2. How to use the light projector, as shown below.
3. Connect Bluetooth "SKE-JBP-J01" of the smart phone to play music.
4. Use correct method of the remote control to make sure the remote control is pointing at the infrared sensor that is the "Remote Receiving Area" on the host.

## 1. Manual Mode

### Aurora Smart Projector host buttons function description

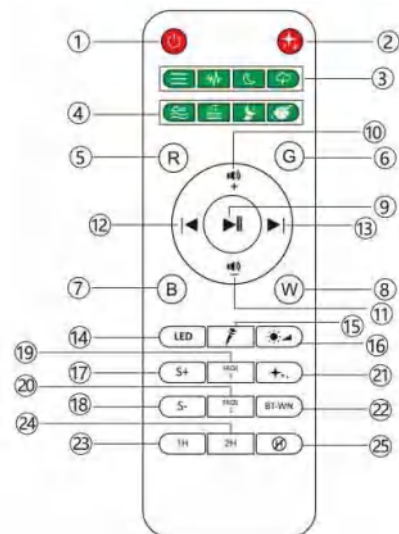


- ① Short press play previous song; Long press reduce volume
- ② Short press play next song; Long press increase volume
- ③ Short press control the music play/pause
- ④ Bluetooth and white noise modes switching
- ⑤ DC Input: 5V/2A
- ⑥ Aurora light brightness adjustment
- ⑦ Power ON/Wi-Fi/OFF mode switching

### Remote control function description

#### Instruction:

When aurora smart projector connects power, multicolored aurora light keeps on and in moving status, star light in breathing mode, it can default automatically switch off in 4 hours.(Timing without daily cycle)



- ① Power Switch: The default mode is multicolored aurora light moving and star light in breathing status (aurora light default moving in normal speed)
- ② Star Light Switch: Control the star light switch on/off
- ③ Built-in White Noise: Ocean Wave -- White Noise -- Summer Night -- Thunder
- ④ Built-in White Noise: Brook -- Baby Lullaby 01 -- Baby Lullaby 02 -- Baby Lullaby 03
- ⑤ Red Aurora Light: Press "R" , red light on; press again, red light off (at basic of light on at first time)
- ⑥ Green Aurora Light: Press "G" , green light on; press again, green light off (at basic of light on at first time)
- ⑦ Blue Aurora Light: Press "B" , blue light on; press again, blue light off (at basic of light on at first time)
- ⑧ White Aurora Light: Press "W" , white light on; press again, white light off (at basic of light on at first time)
- ⑨ Pause    ⑩ Volume Up    ⑪ Volume Down    ⑫ Previous Song    ⑬ Next Song
- ⑭ Control the aurora light switch on/off

EN

⑮ Voice Control Switch: Lights will fast flash following the external sound or music rhythm

DE

⑯ Control the aurora light brightness adjustment

FR

⑰ Control the aurora light moving speed up

ES

⑱ Control the aurora light moving speed down

IT

⑲ FADE 1: Aurora light move circularly in R-G-B-W single color mode

JP

⑳ FADE 2: Aurora light move circularly in RB-RG-RW-BG-BW-GW double-color mode

㉑ Control the star light achieve either stay on or enter into breathing mode

㉒ Control Bluetooth and white noise mode switch

㉓ 1H Timer: Short press it, aurora light/star light flash and beep once time as prompting for set 1H timer successfully

㉔ 2H Timer: Short press it, aurora light/star light flash and beep 2 times as prompting for set 2H timer successfully

㉕ Timer Off: Short press it, aurora light/star light flash and beep 3 times as prompting for set timer off successfully.

**Notice:** This product comes with 4 hours automatic shutdown function that is work for 4 hours and shut down automatically.

## 2.Wi-Fi Mode

**A.Wi-Fi Setting:** (1) Check your phone Wi-Fi "On" , or the product won' t be connected; (2) Enable the location information on your phone, or it cannot show the connected Wi-Fi name; (3) Connect your phone to a 2.4GHz network and other frequencies is not supported.

1. Download the APP by scanning the following QR Codes (Notes: The same operations on the following two APPs. Let us take "Smart Life" APP for an example):





Smart Life



Tuya Smart

2. Search "Smart Life" APP through Google Play(For Android) or APP Store (For Apple-iOS) and download it

3. Register and log in to the APP

1). Open the "Smart Life" APP

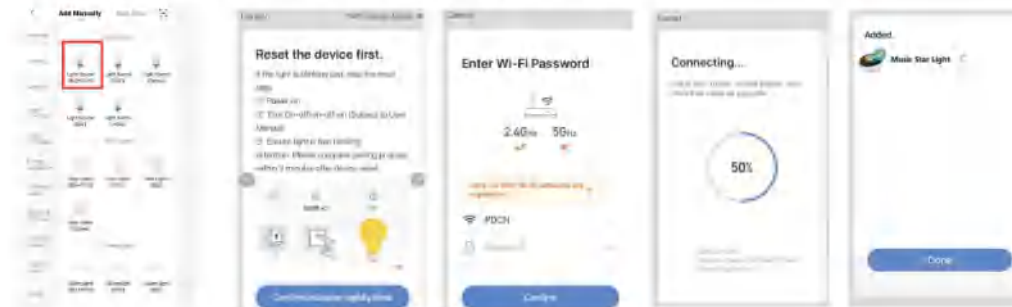
2). Log in your account and password. Please register a new account on first use

4. Configuration

1). Connect the power supply of this aurora smart projector and the host status is "Wi-Fi"

2). Connect to the Wi-Fi: Turn on this aurora smart projector, and slides repeatedly for 3 times with the following steps: OFF-📶-OFF-📶-OFF-📶, till the projector light shows white and fast-flashing. Note: the interval of the power switch sliding should not exceed 10 seconds

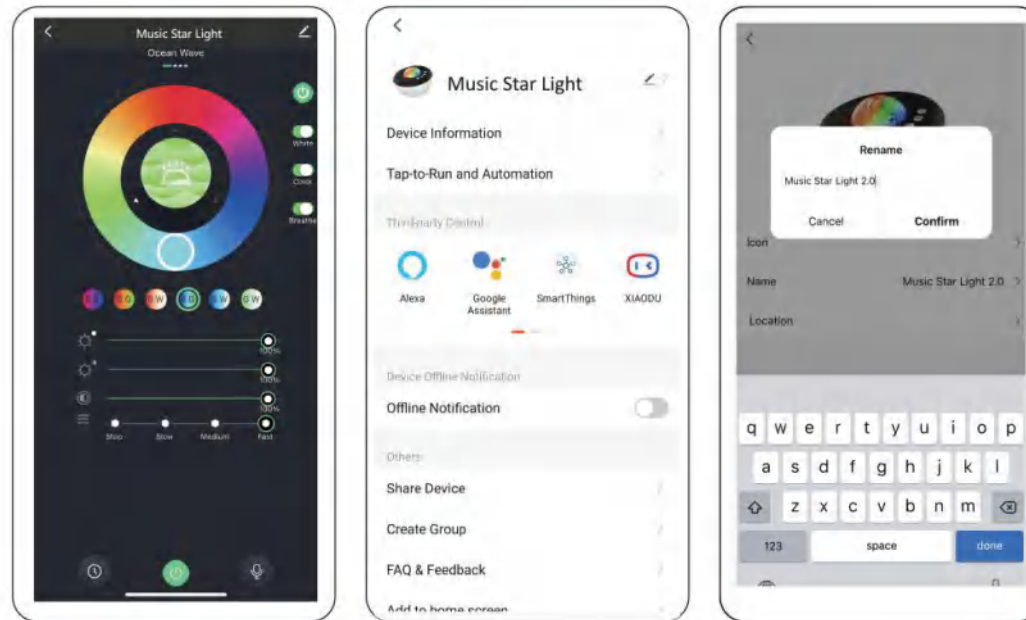
**B. Turn on "Smart Life" App, click "Add Device", select "Lighting--Light Source (BLE+Wi-Fi)", choose your home Wi-Fi and enter password (If applicable), then click "Next". (Note: Connect your phone to a 2.4GHz network router, 5GHz network not supported)**



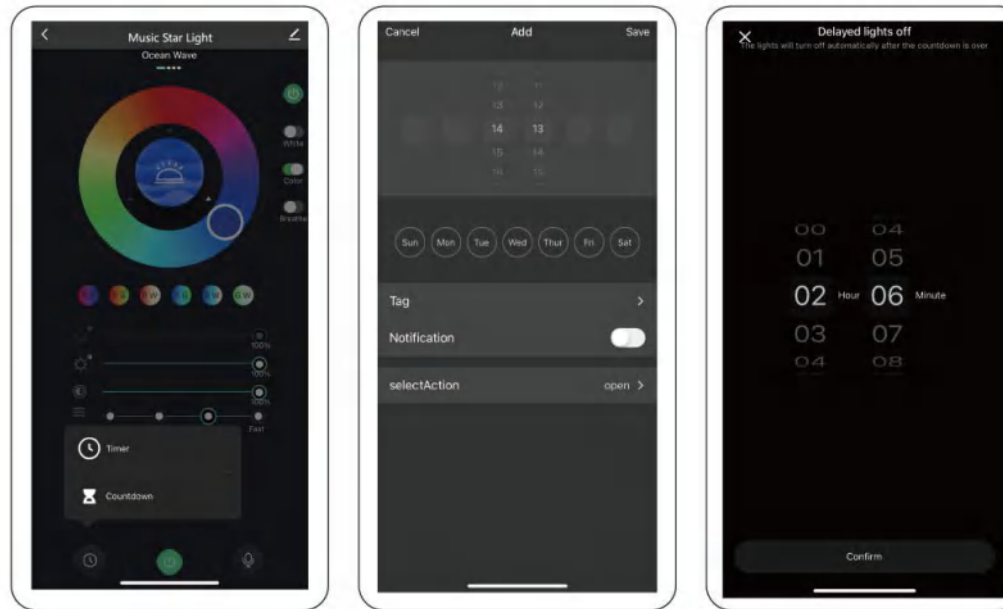
**EN** C. Then entering the configuration process. Once connected, it shows “Device added successfully” that is the Aurora Smart Projector has been connected successfully.

## APP Functions

1. Click on the “Music Star Light” icon to enter the main interface, touch the Power Switch “🔌” to turn on/off the music star light. Custom the product name via the icon “✎” at the top right-hand corner, turn on the voice-activated mode via Micro “🎤” button



Click "Timer" icon “🕒” to set a timer of the device auto turn on/off: Make the device automatically turn on/off in a custom time. (Note: The device cannot set the auto shut off time exceed 4 hours)



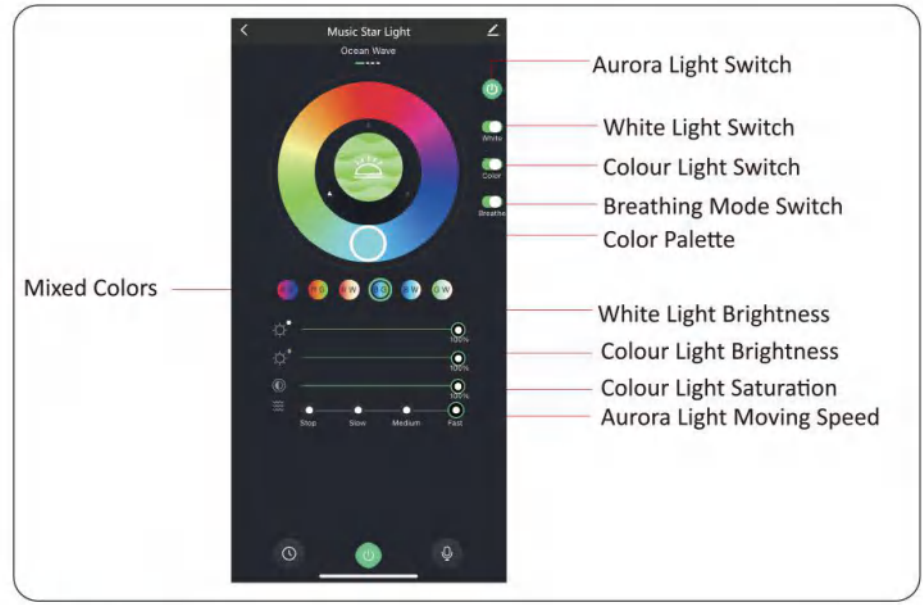
EN

## 2. Four Main Interfaces as follows: 1). Aurora Light Interface; 2). Star Light Interface; 3). Music Play Interface; 4). Scenario Interface

### 2.1 Aurora Light Interface:

- 1). Turn on/off aurora light;
- 2). turn on/off white light/colour light;
- 3). turn on/off aurora light breathing mode;
- 4). adjust the colour lights;
- 5). choose 6 mixed-colors aurora light effects;
- 6). adjust white light brightness;
- 7). adjust colour light brightness;
- 8). adjust colour light saturation;
- 9). adjust the aurora light moving speed





### 2.2 Star Light Interface

Features as follows: 1). turn on/off star light; 2). turn on/off star light breathing mode; 3). adjust star light brightness



### 2.3 Music Play Interface

Features as follows: 1). play/pause the music, switch the previous/the next song; 2).adjust the volume; 3). select the sound effects, the light will dance to the music, and you can adjust the rhythm sensitivity

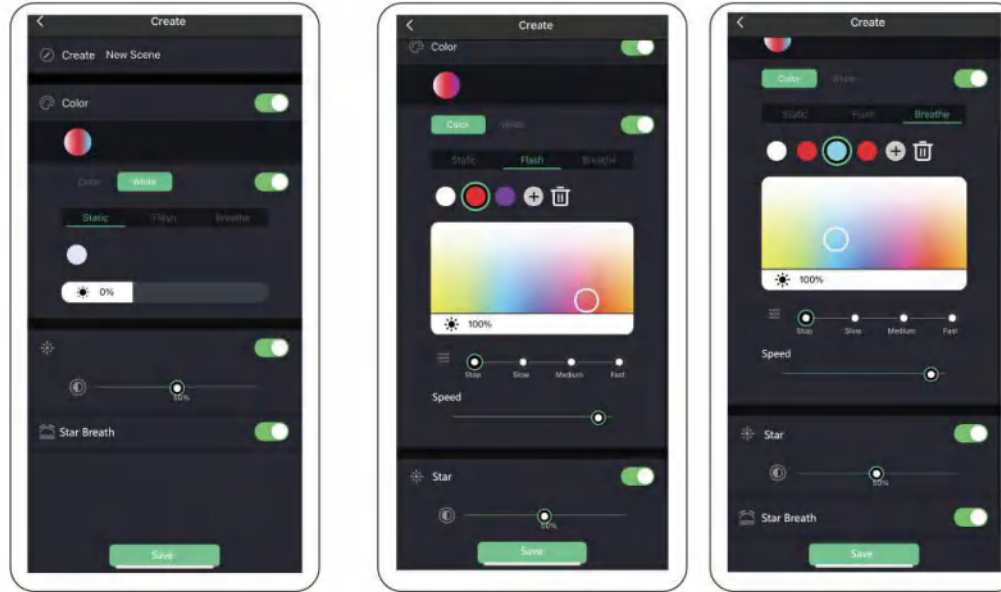
EN



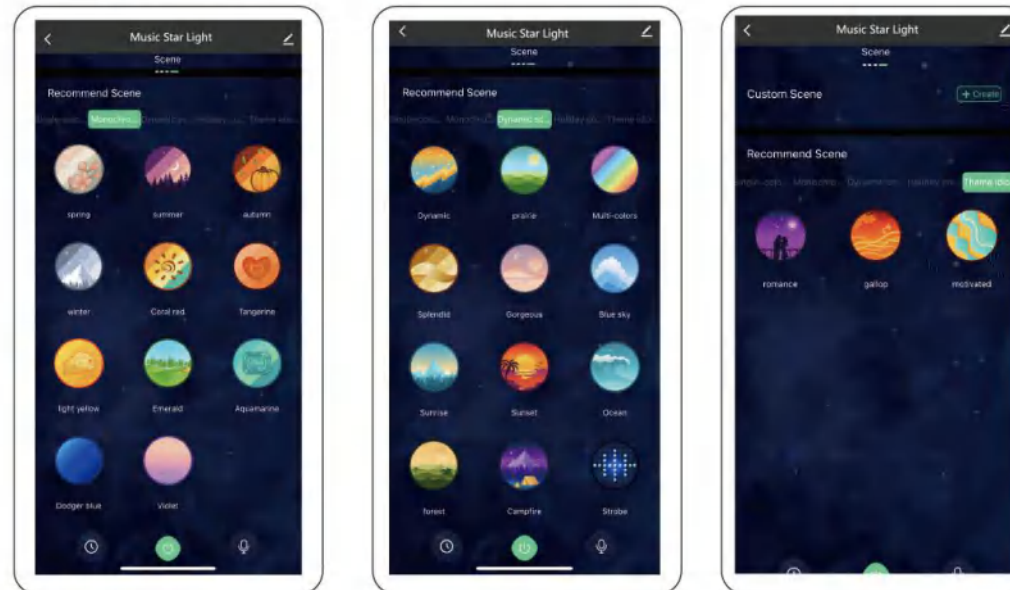
### 2.4 Scenario Interface

Features as follows: Custom scenario mode, choose the modes combination: 1). colour light/white light combination, adjust brightness, 3 color changing modes: a. Static mode; b. Flash mode; c. Breathe mode. Custom the color changed speed in flash and breathe modes; 2). star light on/off, adjust star light brightness, star light breathe mode on/off; 3). choose your custom scenario and save your rename, convenient to restart your favorite scenario effects next time

EN



Preset Scenario Mode Selection: Click the preset scenario icon, select 48 kinds of scenario mode effects in the system



### How to Connect with Amazon Alexa:

- (1) Search "Smart Life" APP through Google Play (For Android) or APP Store (For Apple-iOS) and download it;
- (2) Open the APP and register a new account or log in (If you have registered)
- (3) Turn on "Smart Life" APP and connect to the network;
- (4) Important: You can use the "Smart Life" App to rename the device. For example, if you want to rename the Aurora Smart Projector to "Livingroom Light" , please find this device in step 9 so that Echo will receive the updated name.
- (5) Download "Amazon Alexa" APP through Amazon Market, Google Play or iOS APP Store, and connect the Echo with "Amazon Alexa"
- (6) Search "Smart Life" in the Amazon Alexa Skills;
- (7) Click to start the Smart Life in the Alexa Skills, enter your account name, password on this web page;
- (8) Authorize and allow Amazon Alexa to log in your Smart Life registered account, talk to Echo: "Alexa, search the device, please" , once completion, Echo say: "Search completed" ;
- (9) All settings are finished and now you can talk to Amazon Alexa to control this device.

### Here are the Voice Commands on the Smart Life:

- Alexa, turn on Music Star Light
- Alexa, turn off Music Star Light
- Alexa, set Music Star Light to 20 percent
- Alexa, brighten/increase Music Star Light
- Alexa, dim/decrease Music Star Light
- Alexa, set Music Star Light to green

### Troubleshooting for Network Configuration

1. Verify the Wi-Fi password in the following ways  
Open the Wi-Fi list on your phone, click Wi-Fi name and ignore it, then reconnect and enter the password again to ensure connecting successfully. If not, please use the right Wi-Fi password.
2. If your phone cannot show your home Wi-Fi, please check if the location information on your phone is enabled
3. Please check if your phone is connected with 2.4GHz network (other frequencies is not supported)
4. Please check the Wi-Fi name cannot contain Chinese, blank and special characters
5. Please check the Wi-Fi password cannot be empty, it can up to a maximum of 58 characters and try to avoid using special characters.
6. In Wi-Fi connection, Please keep the product close to the network router at a distance of 5 meters.

**Specifications:**

Host Material	ABS
Input Rated Voltage	5VDC
Maximum Power	10W
Maximum Working Current	2.0A
Projection Light Source	LED light bead
Projection Light Source Wavelength	Red light beads (620-625nm), green light beads (520-525nm), blue light beads (460-465nm), white light beads (color temperature 1500-15000k), green light wavelength (532nm)
Projection Distance	2-10M/6.56-32.80ft
Projection Area	The projection area is 120m <sup>2</sup> at a distance of 3M, and 200m <sup>2</sup> at a distance of 5M
Motor	Starting Voltage: 3V, with 1-4 r/min
Speaker Parameter	4Ω3W x1
Input Power	100-240V AC 50/60Hz 2.0A (Work together with power adapter)
Operating Temperature	-20~50°C/-4~122°F
Storage Temperature	-20~60°C/-4~140°F
Product Model	SKE-JBP-J01
Bluetooth	Bluetooth 5.0
Wi-Fi	Supports 2.4GHz Wi-Fi network
FCC ID	2AXGNSKE-JBP-J01



Designed in USA  
By Anbuy®Starry  
8416 SW 23rd Place,  
Oklahoma, OK 73128  
Made in China

**ANBUY**® **STARRY**

[www.anbuystarry.com](http://www.anbuystarry.com)