



# Product User Manual

1	Things to Know Before Using	P2
2	App Download	P4
3	About the Indicator Lights	P5
4	How to use it? ① WiFi Mode (With WiFi) P6 ② Direct Recording Mode (No WiFi) P14	P6
5	APP Pages	P16
6	Questions & Answers	P21

# 1. Things to Know Before Using

1. It can work with or without WiFi. There are two ways to use it. (See Part 4 "How to use it?", Page 6).

2. Multiple users share the same device need password.  
One user account can connect to multiple devices.




3. It can not work unplugged. To ensure the clarity of the video recording, you must remove the protective film on the cover and keep the lens and cover clean.  
Otherwise, the recorded video may be blurry.

4. It supports cloud storage(purchase required) or micro SD card storage (Not included, C10 or above, Format before using, Max support 128G).

5. When inserted a memory card, all recorded videos will be on it. You can view or download all of the videos on the memory card through the APP.

**Package List:**

- ✓ Hidden Camera Charger \* 1
- ✓ Cover Replacement \* 2
- ✓ Card Reader \* 1
- ✓ Cleaning Cloth \* 1
- ✓ Card Pin \*1
- ✓ User Manual \*1

Use which front cover?	Original Cover	Purple Cover	Hollow-out Cover
Three covers			
Daytime Clarity	5-star	4-star	5-star
Night Vision Clarity	3-star	5-star	5-star
Hidden Performance	5-star	4-star	3-star

## 2. APP Download


 Download the APP before using it.

① Android search "LOOKCAM" on Google Play.

② iOS search "LOOKCAM" in the App Store.

③ Scan the QR code below in the browser and download.

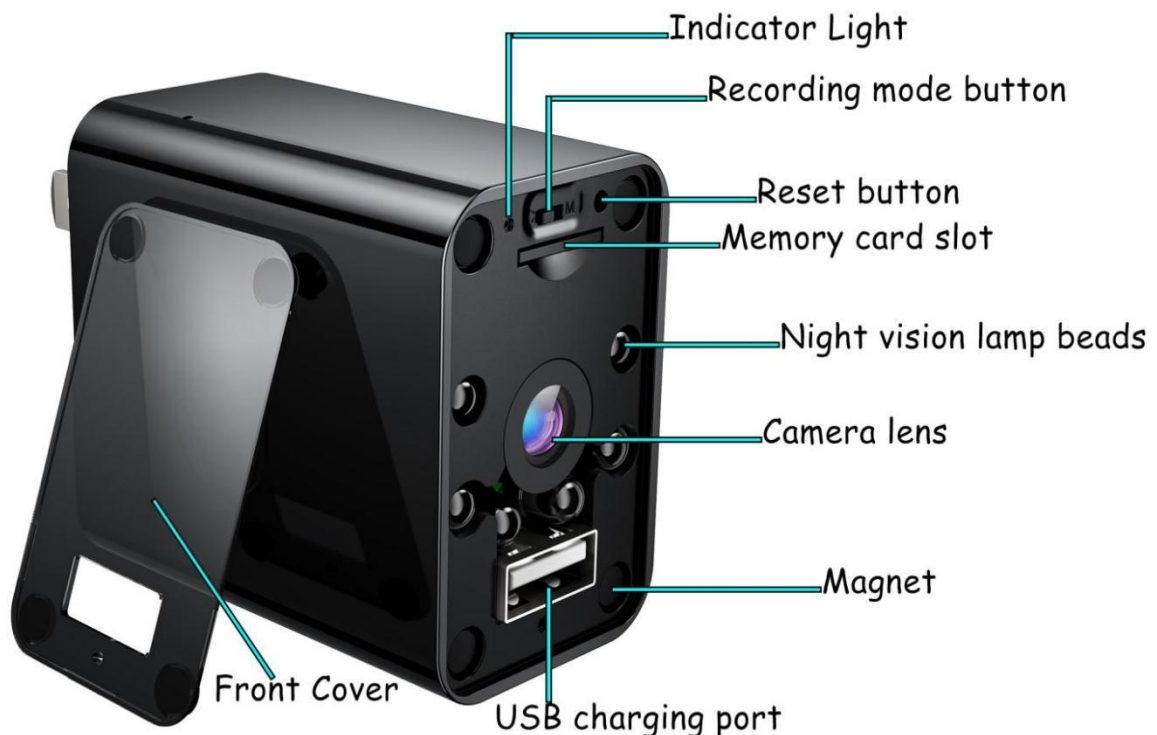


 Open the app and allow access to recording, storage and notifications permissions to save recorded videos, send alarm messages, etc.

### 3. About the Indicator Lights

- Red light on >>>> Starting or resetting.
- Blue light flashes slowly >>>> Device hotspot is connected / not connected.
- Blue light flashes quickly >>>> WiFi connecting.
- Blue light on >>>> WiFi connected.

🔔 Reminder: The indicator can be turned off by app.



## 4. How to use it?

 It can work with or without WiFi.

① [With WiFi, choose WiFi Mode.](#)

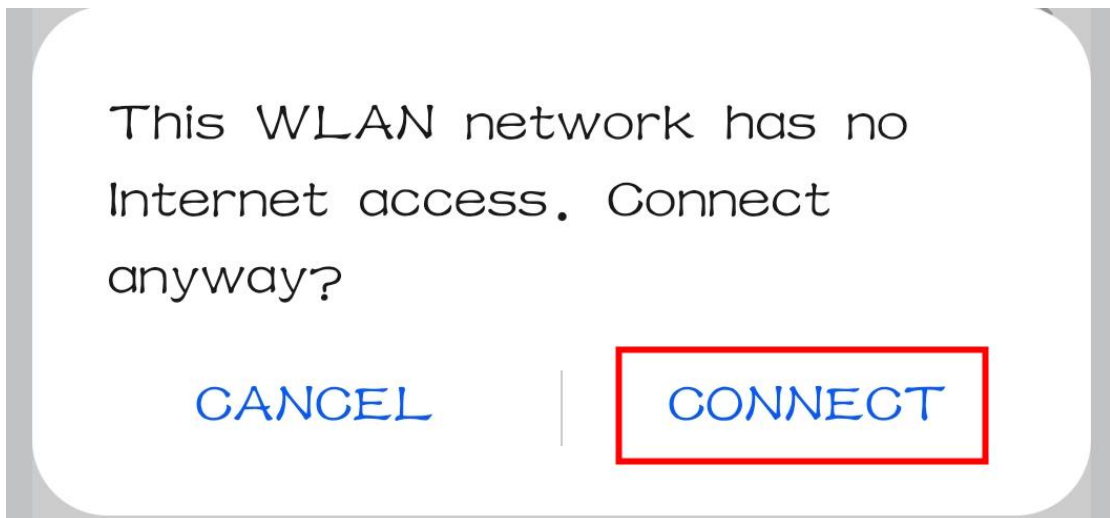
① [No WiFi, choose Direct Recording Mode.](#)

### WiFi Mode

**WiFi mode:** Connect the device to WiFi for real-time remote monitoring on mobile devices ([Only applicable to 2.4GHz WiFi, not applicable to 5GHz WiFi](#)).

**Step 1. Turn on the device >>>>** Plug it into a power socket, red light on for about 15-20s and then blue light flash slowly.

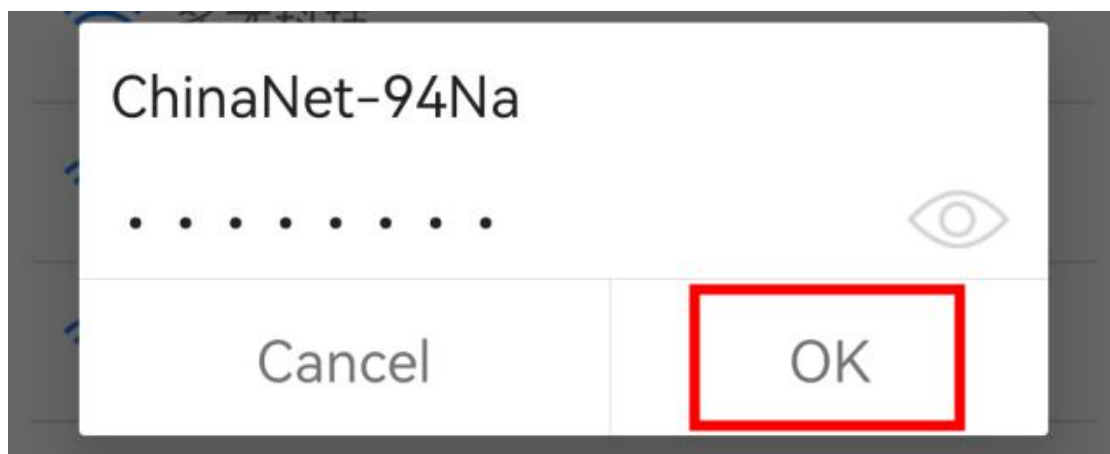
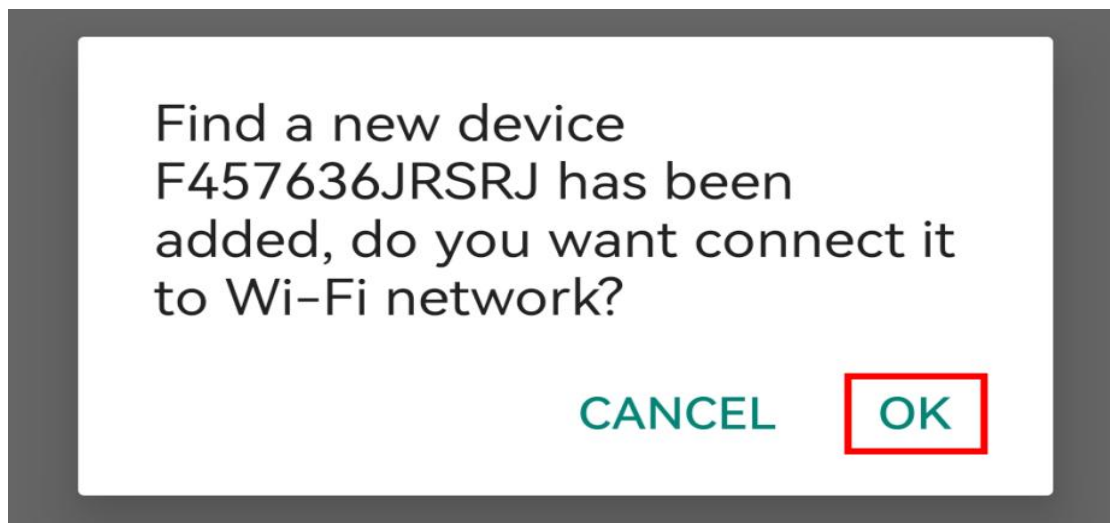
**Step 2. Connect to device hotspot >>>>** Find a hotspot in your WLAN list that named "F000000AAAAA", click to connect ([Your phone may remind you that this network is unavailable, please keep connected](#)).

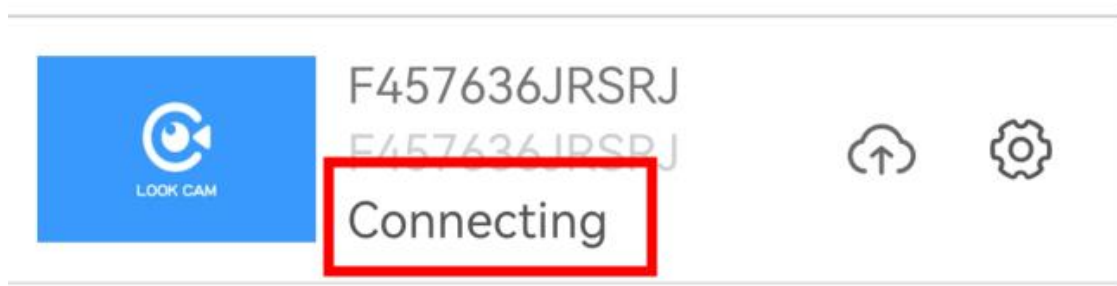




**Step 3. Connect the device to WiFi >>>>** Open the APP, click "OK" in the "Do you want to connect it to WiFi?" option, then choose a stable WiFi to connect.

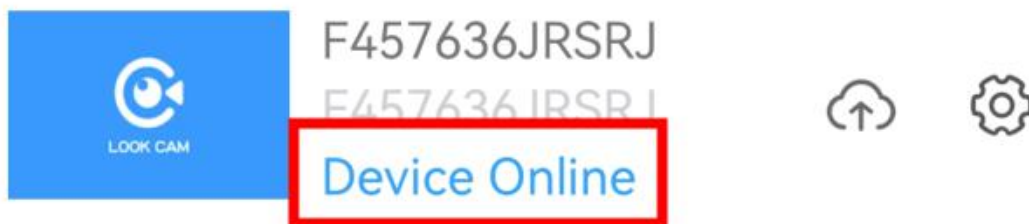
📌 If you **don't connect WiFi** now, you will be in **AP mode**. In AP mode, you can also real-time viewing the device, but **within a short distance (about 50ft)**. Once the distance between the camera and phone exceeds 50ft, the hotspot will disconnect, and real-time access is unavailable.





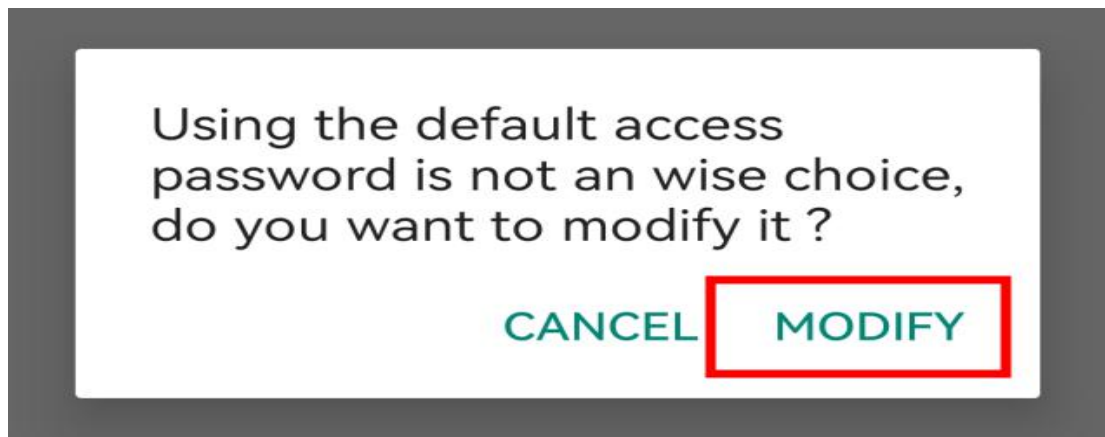
**i** Wait for about 30-40s (IMPORTANT) >>>>

Waiting for about 30-40s for WiFi connecting until the blue light stop flashing and on, and then click to refresh till device status shows "device online".



- ⚡ If the device status keeps "Connecting" or "Offline" for minutes, and your WiFi password is correct. >>>>  
Try reset the device([Page 13](#)).
- ⚡ You can also connect or change WiFi by clicking the "[Device Setting > WiFi Setting](#)".
- ⚡ If your WiFi is hidden, click any WiFi in the list, manually modify it's name to your WiFi name, enter the WiFi password.

**Step 4. Set a password >>>>** Click to watch the video, select "Modify" in the pop-up "Do you want to modify the password?" option. And set a password of your own ([the default password is "123456"](#)).



< Modify the access password

---

Old password 123456 .....  
New password .....  
Confirm .....

OK

CANCEL

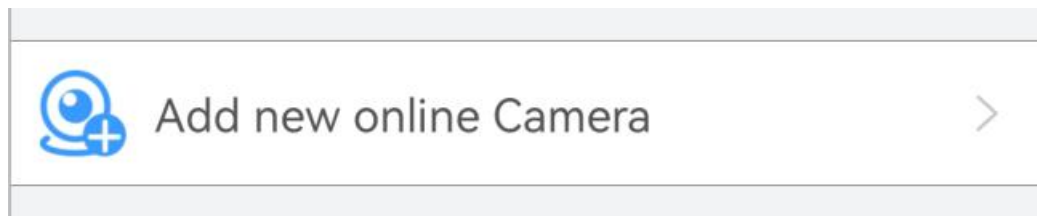
🔔 **Reminder:** Set a password to protect privacy. When others connect to the device, they need to enter the password to access real-time monitoring. If you forget your password, try "reset" the device and set a new one.

**Step 5. Share your device >>>>** You can share your device with anyone who has downloaded this app by scanning your device QR code.

A. Click "+" in the upper right corner.



B. Select "Add new online Camera"



C. Click "SCAN QR CODE"

< Add Device

Device Name Cam




Device ID \_\_\_\_\_

Device Pwd \_\_\_\_\_ ●●●●●●

ADD BY LAN

SCAN QR CODE

D. You can get your device QR code by clicking "Device Setting > Device ID".

 F457636JRSRJ  
F457636JRSRJ  
Device Online  

< Device Setting

Device ID F457636JRSRJ >

- i** If there is a delay in real-time viewing, this is because the WiFi or your phone data is slow or the device is too far away from the WiFi router. You need to change to another WiFi or move the camera to a closer position to the WiFi router.

## **Many problems can be solved by "reset"**

**Plug it into a power socket. After the device starts, keep pressing the "reset" button by the card pin for about 10s, till the red light is on(means restarting).**

**Any problems, try "reset".**



- ⚡ Reminder: If there are problems like network disconnect, device not working, [contact our professional customer support team below.](#)

Amazon After-sales E-mail:  
[kingdansaftersales@126.com](mailto:kingdansaftersales@126.com)

- ⚡ Reminder: We have a [new product plan](#) to let customers experience our new product, you have the chance to [get a new product free of charge every month.](#) If you are interested, [contact us BY EMAIL.](#)

## Direct Recording Mode

**Without WiFi (Direct Recording mode):** No network connection is required. Need to insert a micro SD card (not included) before using. Keep the USB side down in case the video recorded upside down.

1

Open the cover, insert a memory card (Chip Side Up)



2

Select Recording Mode:

C - Loop Recording

M - Motion/Voice Detection



3

Put on the cover, connect to the power supply.



4

Take out the memory card, watch the video.

(Connect to the computer with card reader - Included)



- ✧ In **"Loop Recording"-"C"** mode, the camera continues to work, keeps recording video and storage.
- ✧ In **"Motion Detection"-"M"** mode, the camera is in standby condition. There are two ways to activate recording:

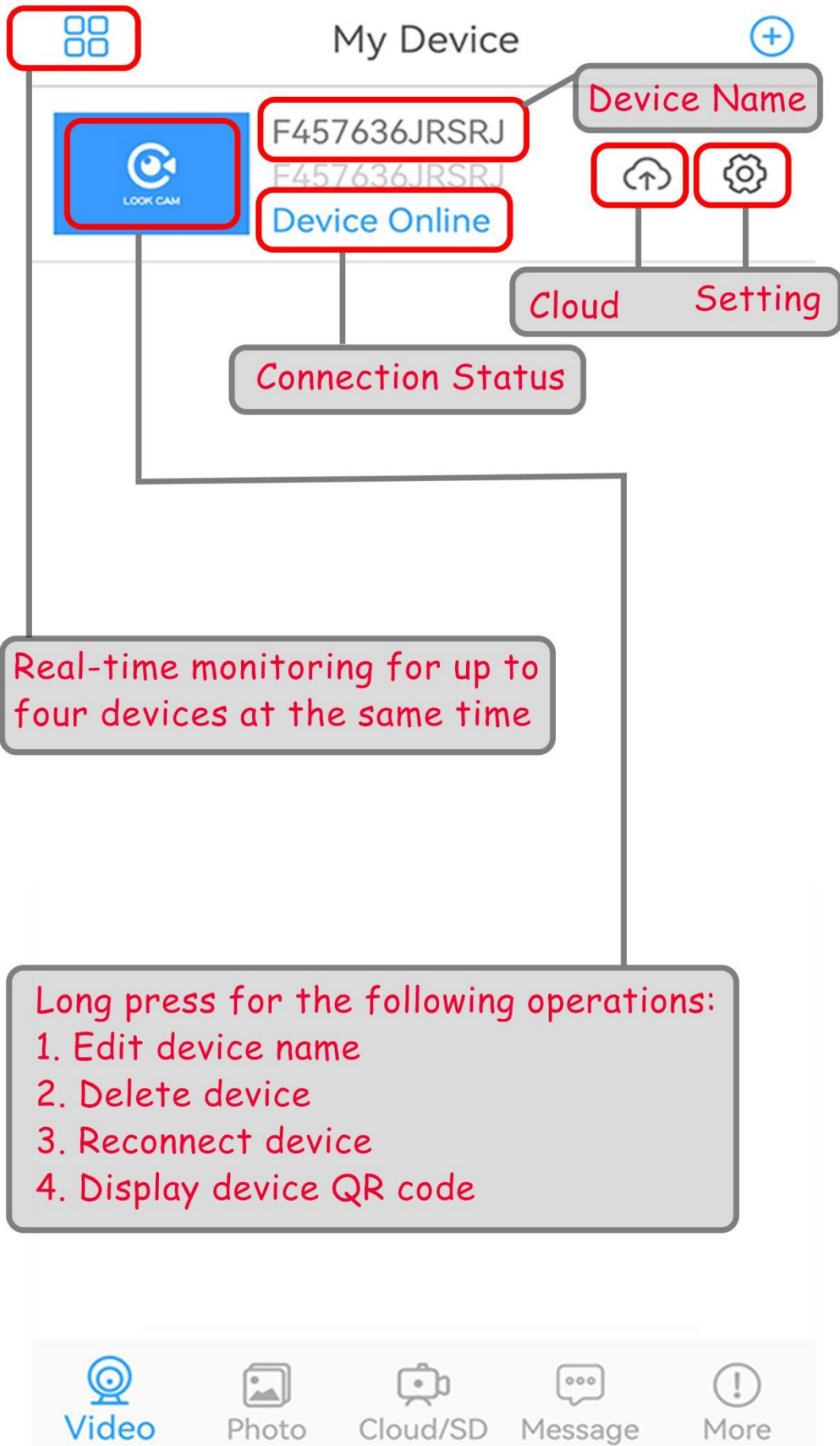


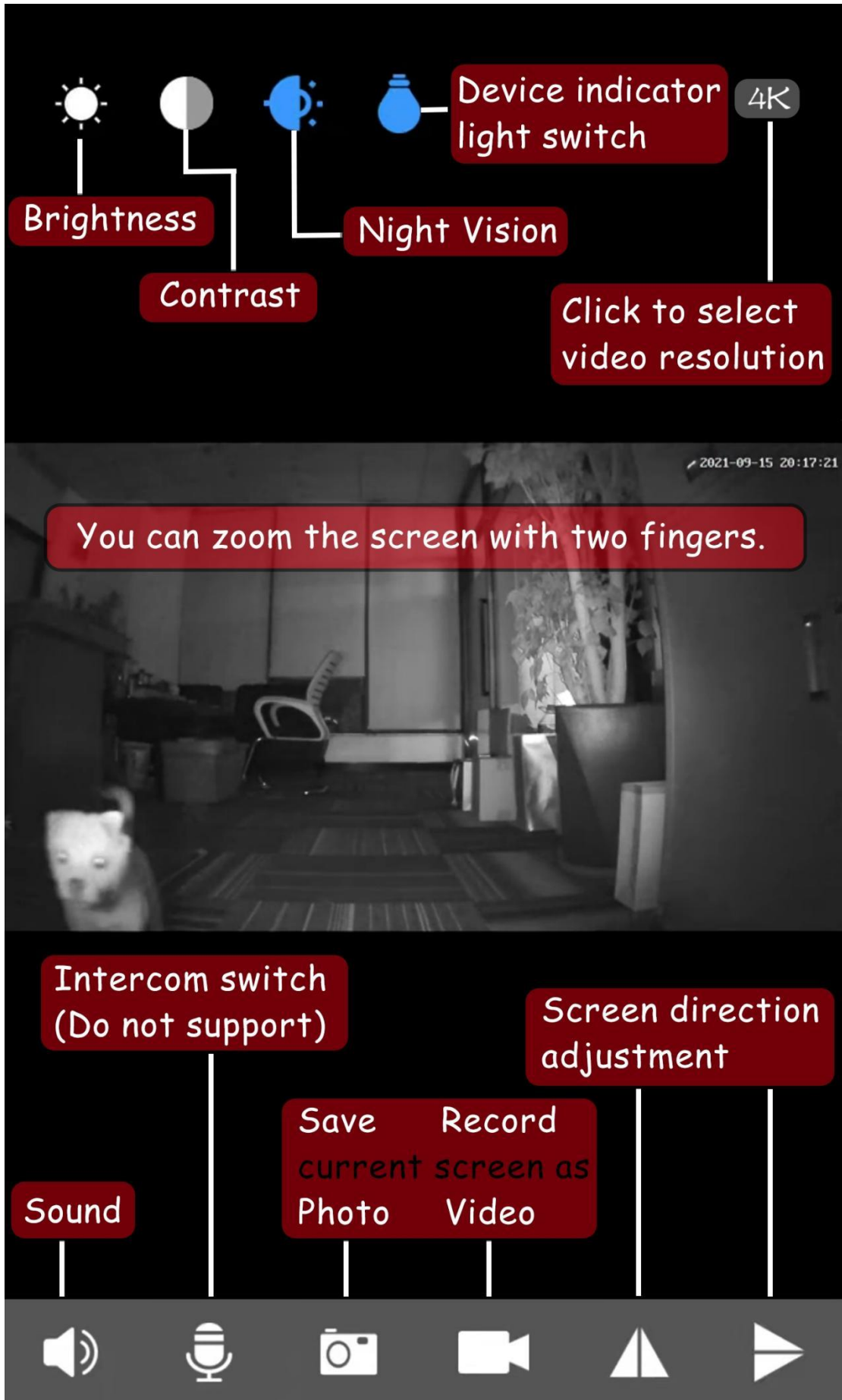
- ✓ **1. Motion Detection:** When it detects any movements, color-changing, or changes in the light source, it starts recording.
- ✓ **2. Voice Detection:** When the camera detects any sound, like talking/opening doors nearby or footsteps, when it reaches more than 70decibels, it starts recording.

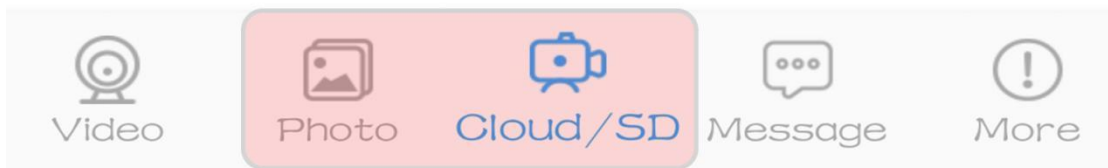
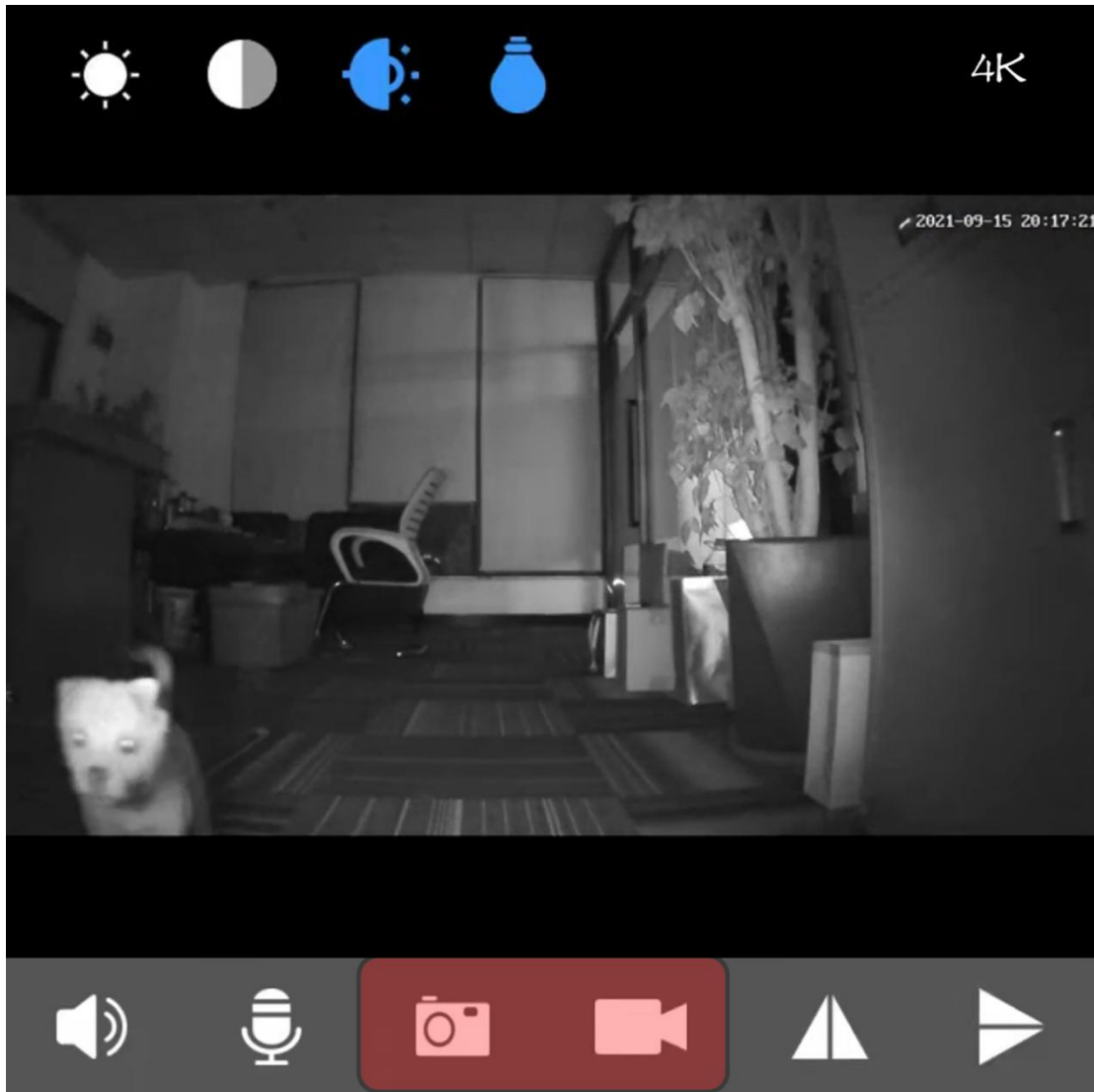
TF Card	32GB	64GB	128GB(Max)
Recording Time(Full HD Video)	About 160 Hours	About 320 Hours	About 640 Hours

## 5. App Pages

As the APP will continue to update, this part only informs related functions and instructions. If your APP page does not match with this part, please refer to the newest APP.







Video >>>>> Display connected devices

Cloud/SD >>>>> Display the videos saved in the memory card or cloud space, which can replay, download, or delete (First time to use, swipe to refresh, click to download).

Photo >>>>> Display images and videos saved from monitoring page

Message >>>>> Display the alarm photos(Need to purchase to see the alarm pictures, \$1 forever). Both motion and sound changes can activate the alarm.



## Device Setting

Device ID F457636JRSRJ >

Click to show device QR code, share the device with others by scanning QR code.



Alarm Config >

Turn on alarm, need notification permission.



Modify the access password >

"Reset" if you forget the password, default: 123456.



SD Card Setting >

SD card related settings, format memory card, etc.



IR-LED Config >

Select the working mode of night vision lamp beads.



WiFi Setting >

To connect or change WiFi, Do not support 5GHz WiFi.



Reboot Device >

Restart the camera.



Reset Factory >

Reset the device, equals to press the "reset" button.



Sync Mobile Time >



Firmware Version Oct 30 2021 17:54:42 >



Delete Device >

## 6. Questions & Answers

### 1. Why can't I connect to WiFi all the time?

- Wrong WiFi password.
- Don't do anything when waiting for WiFi connecting. Wait for about 30s until the blue light is on, and then click to refresh till device status shows "device online".
- Try "reset" the device([Page 13](#)).

### 2. Why is the video playback always loading?

- The device-connected WiFi is slow.
- The device is too far away from the WiFi router.
- Your mobile device network is poor.

### 3. Do I have to set a password? What if I forget it?

- Set a password to protect privacy. If you set a password of your own, when others connect to the device, they need to enter the password to access real-time monitoring.
- If you forget your password, try "reset" the device and set a new one. The default password is 123456.

### 4. Why is my video blurry?

- Remove the protective film on the front cover and keep the cover and camera lens clean - wipe them with the cleaning cloth provided.

### 5. How to turn off the indicator light on the device?

- By clicking the **indicator logo** on the real-time view page to turn on/off the indicator lights on the device.





## 6. Why is there always noise?

- This is because your mobile phone is too close to the device, and the electro interacts with each other. As long as you keep 15ft from the device, the noise will disappear.

## 7. Why is there no alarm notification?

- Make sure your app notification is permitted.
- Make sure you have turned on the alarm mode.
- Check your "message" page and refresh for alarm messages.
- If you want to see the alarm picture, you need to pay for this service(cloud page, \$1 forever valid for alarm pictures.)

## 8. Why is the alarm picture don't change?

- Because the device is both motion and sound activation, an alarm will be sent no matter action or sound is detected. It is recommended that you turn on the alarm notification when you are not at home.

## 9. Why can't I drag the progress bar in my playback video?

- You need to download the video to do that.

## 10. How to share my device with others?

- Details on Page 11 > "Step 5".

## 11. How to change to another WiFi?

- By clicking "Device Setting > WiFi Setting", choose the WiFi you want to select from the WiFi list.

## 12. Why does my memory card not save the video?

- Make sure your SD card(Max 128GB) is Class 10 or above.
- Insert/take out the card when the device is unplugged.
- Format the memory card before use.

### 13. Why is the video saved in the memory card not displayed in the app?

- Select your device with the memory card through the upper right corner, and then wipe to refresh the page.

### 14. If my WiFi is hidden, how can I connect?

- Click any WiFi in the list, manually modify its name to your WiFi name, enter the WiFi password.

### 15. What if I encounter another problem?

- If your device is not working, try resetting the device (by pressing the reset button on page 13 or clicking "Device Setting > Reset Factory").
- If the reset can not solve your problem, please get in touch with our professional [customer service team \(Page 14\)](#). We will reply to you within 24 hours.



Reset Factory



#### The logic of the network connection:

➤➤➤ Start up the device first.

➤➤➤ Connect the device hotspot, let the device recognize your mobile phone.

➤➤➤ Connect the device to WiFi through the APP(WiFi fast, no delay; WiFi or mobile phone data slow, delay or keep loading.)

➤➤➤ Set a password to prevent others from accessing your device.