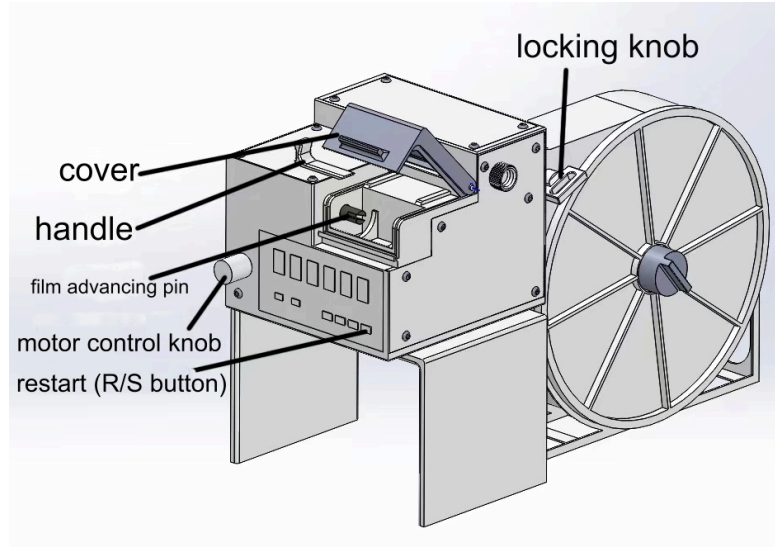




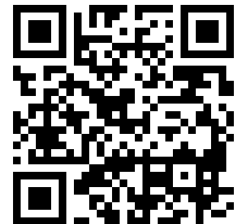
User Manual

Reflex Lab Auto Bulk Film Loader



Please read this user manual carefully before using!

You can also scan this QR code or visit our Youtube channel (<https://www.youtube.com/@reflxlabs>) to watch the demo video.



After receiving the package, please check whether there is any damage caused during transportation. If so, please contact us (help@reflxlabs.com) immediately.

Step 1

Number of Exposure Setting

1. Plug the power adapter, press SET, enter the default password 0001 (press →→→ ↑ SET); password is required so you won't change the setting accidentally
2. When the screen displays "J1," press SET to enter J1 setting, press ↑ and → to set the number of exposures (→ changes digit, ↑ adjusts value) and press SET to confirm
3. When the screen displays "J1" again, press →
4. When the screen displays END, press SET to complete the setting

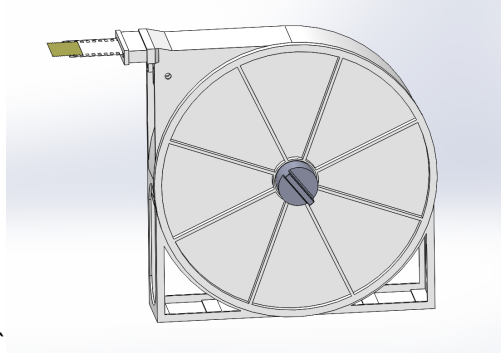
You might see the screen display J2 when you press a wrong button. However, J2 is NOT important to this machine; you can ignore it.

You must take into account the length of the film leader when setting the number of exposures: Basically, if you want to shoot 36 images per roll, you should set "42," which is equal to 36 exposures + the length of the film leader. If you want to have 27 images per roll, you should set "33," and so on.

Step 2

Put your film into the magazine

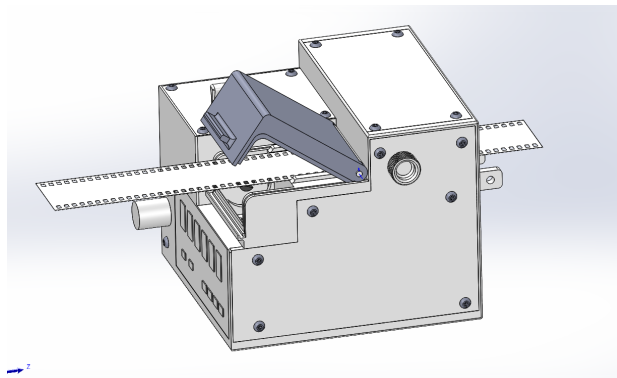
You should familiarize the structure of the magazine since you must do the following step inside a changing bag or at a darkroom: put your film into the magazine, the film leader should be located outside the magazine, close the cover, touch the edge of the cover with your fingers to ensure that the cover is entirely closed, tighten the knob (don't try too hard, or you might snap the screw), and take the magazine out of the darkroom or changing bag. Adhere a small piece of tape on the film for later use.



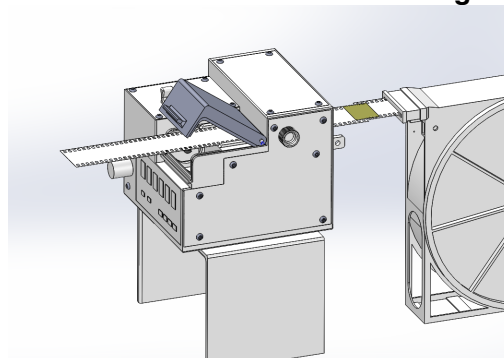
Step 3

Attach the magazine to the film loader

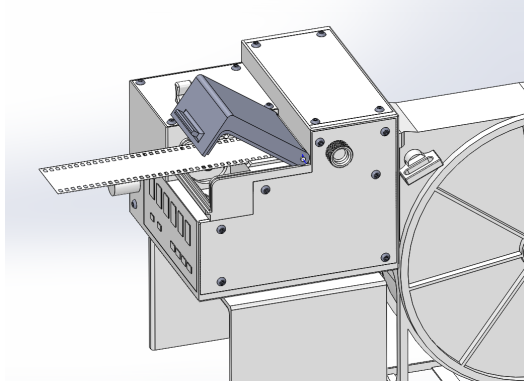
Open the cover of the film loader, insert a piece of waste film from **the front**, and leave about 5cm of the film at the rear.



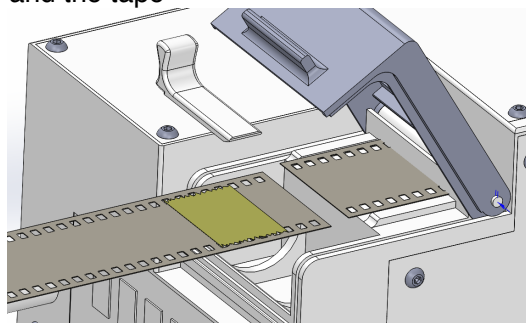
Connect with tape **the waste film** and **the film from the magazine**



Pull the waste film from the front while attaching the magazine to the film loader, and insert the locking knob



Remove the waste film and the tape

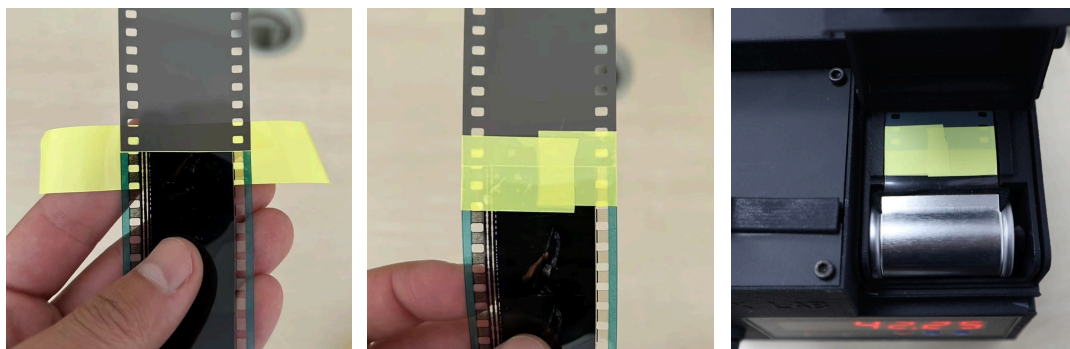


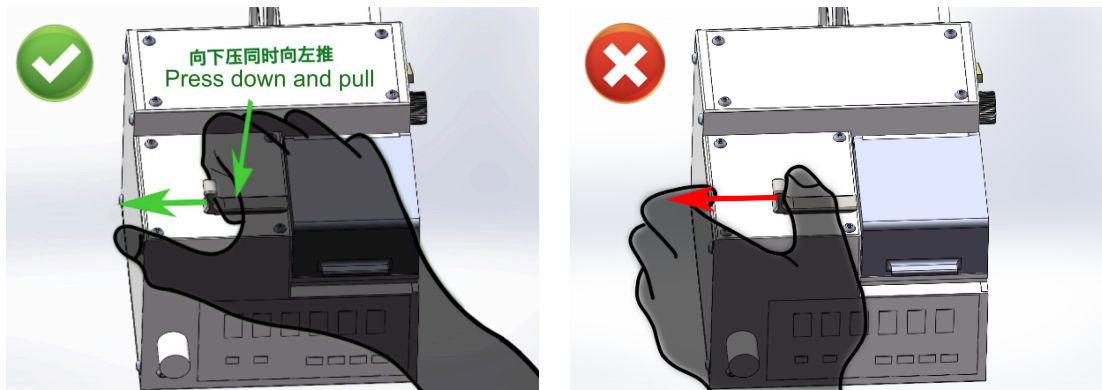
***You can ignore STEP 3 and just pull the film from the magazine, going through the film loader from the rear to the front, but you will waste about 5 exposures.**

Step 4

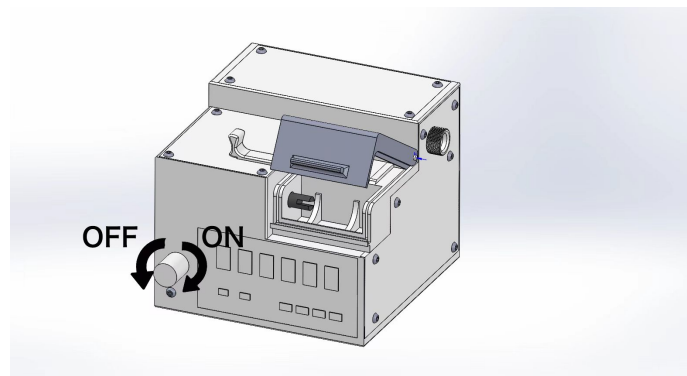
Bulk Loading

Pull the handle to the left, open the cover, properly place the canister into the film loader (pointy side to the right), and use tape to conjoin the canister and the film.



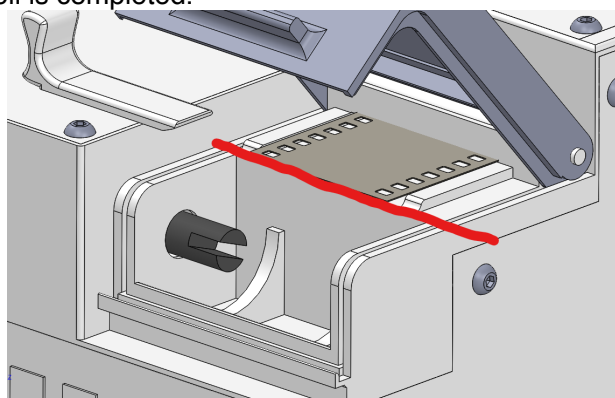


Press the **R/S** key to zero out the number on screen, **right turn the knob to start the motor** (continue turning right to adjust motor speed), turn left to pause any time; it will stop automatically after reaching the number of exposure you pre-set.



*The motor is stepless; it does not always stop at the exact point that you pre-set, usually 0.1-0.3 exp more, especially when the motor speed is high. But that doesn't matter.

After the motor stops, pull the handle, open the cover, cut the film and remove the canister. The first roll is completed.



Put another canister into the film loader, close the cover, **press R/S** to start the second roll, and so on.

Basically, after finishing the first roll, you can keep turning on the motor, and **press R/S every time** before you load a new roll until the whole reel of film is finished.

This machine has no power button; you can unplug it when you want to turn it off. And when you connect the machine to power, it will keep the record from last time.

Maintenance

From time to time, you should use a hex key to open the top cover of the film loader, and clean the tunnel with a brush or an air blower.

