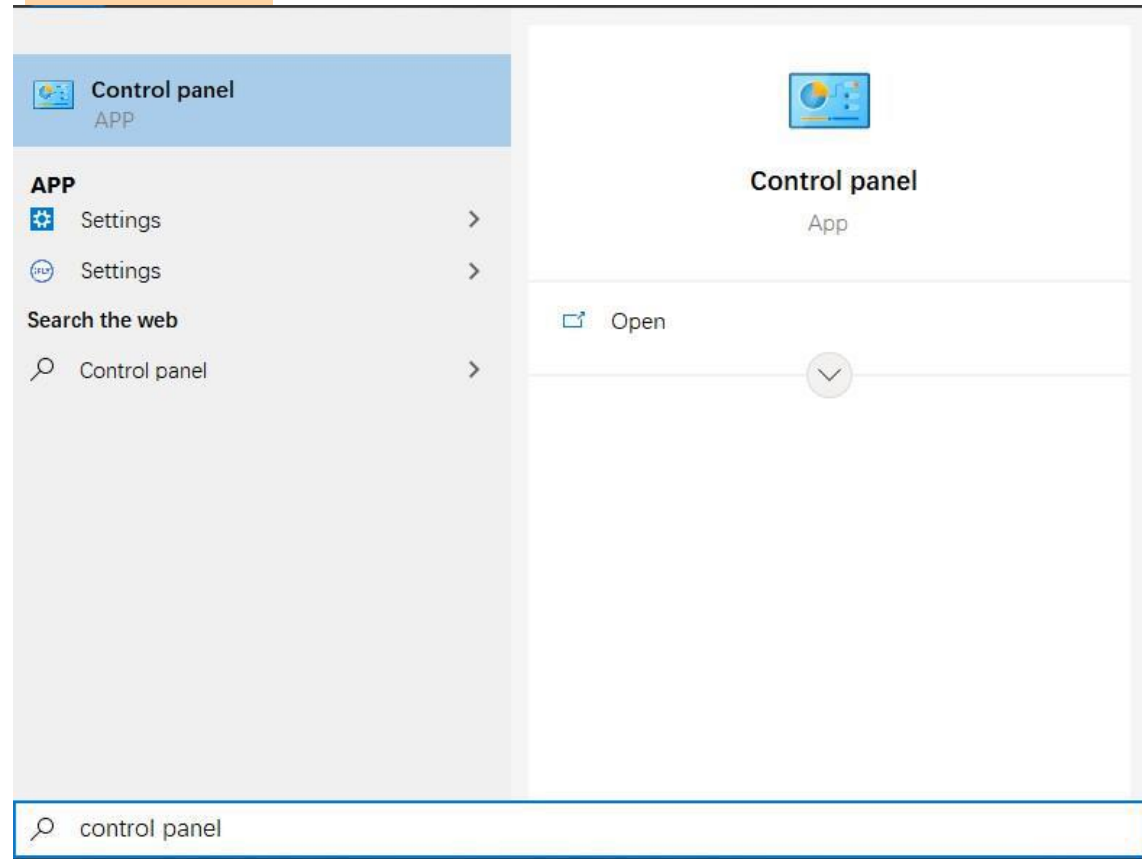
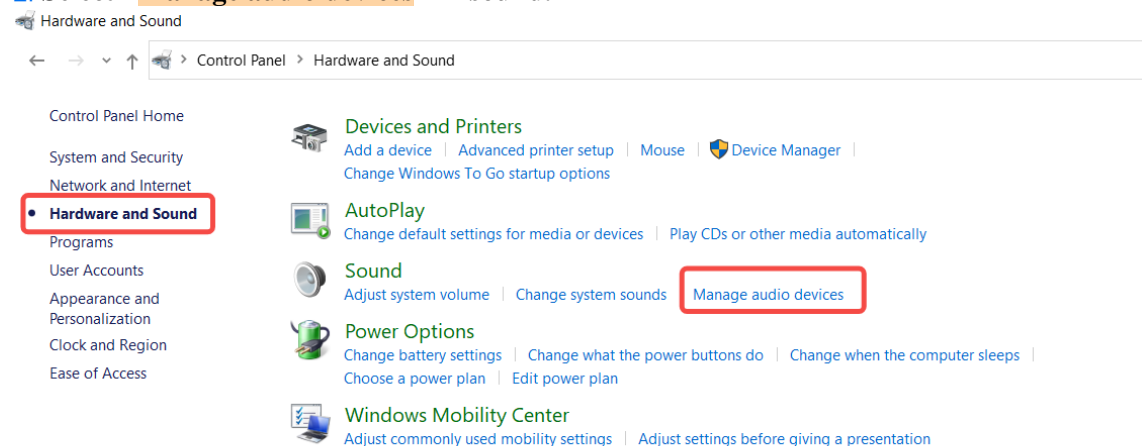


How to set my device as default?

1. Search for "Control panel" in the lower left corner, open the control panel, and select "Hardware and Sound".



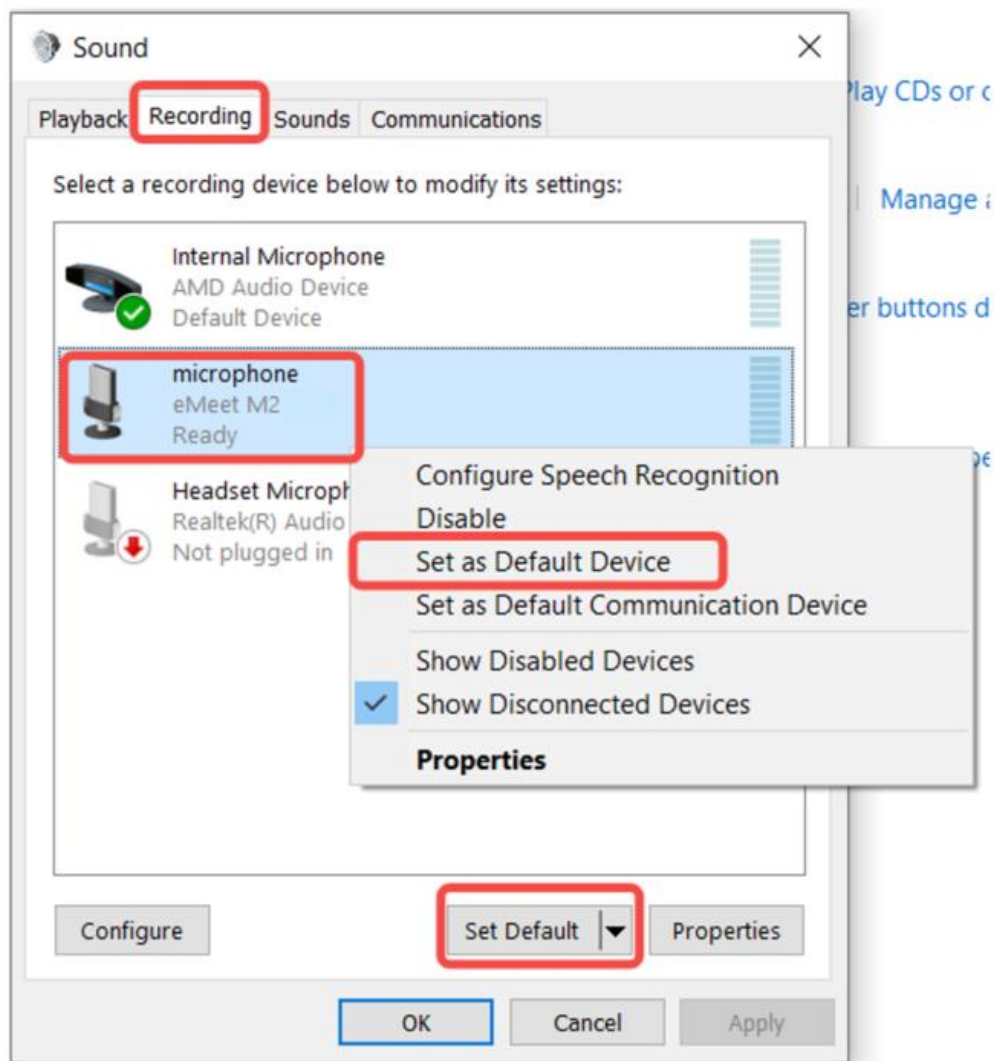
2. Select "Manage audio devices" in sound.



3. Set M2 as the default microphone

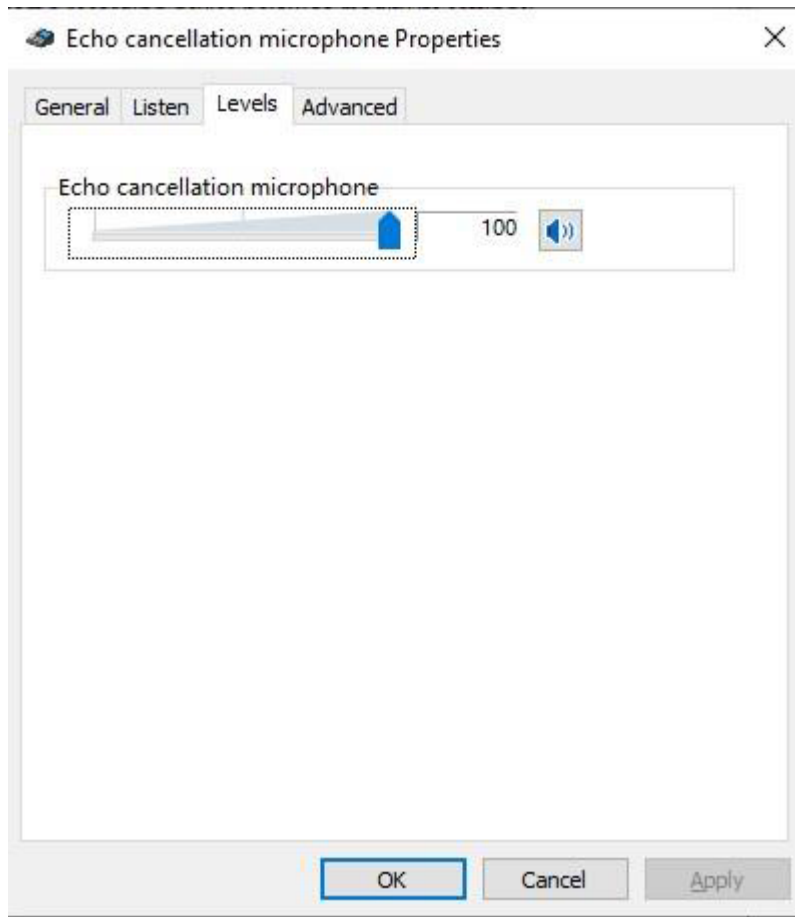
- Click the Recording tab on the top of the displayed setup window.

- Select EMEET M2 under the tab, and then click the Set Default button.
- Click OK to save your changes.



4. If you want to adjust the microphone volume

- Double click the microphone "eMeet M2" and click "levels".
- Drag the slider to the volume level you want, and click "OK" to save the changes.



5. Set M2 as the default speaker

- Click the Playback tab on the top of the displayed setup window.
- Select eMeet M2 under the tab, and then click the Set Default button.
- Click OK to save your changes.

