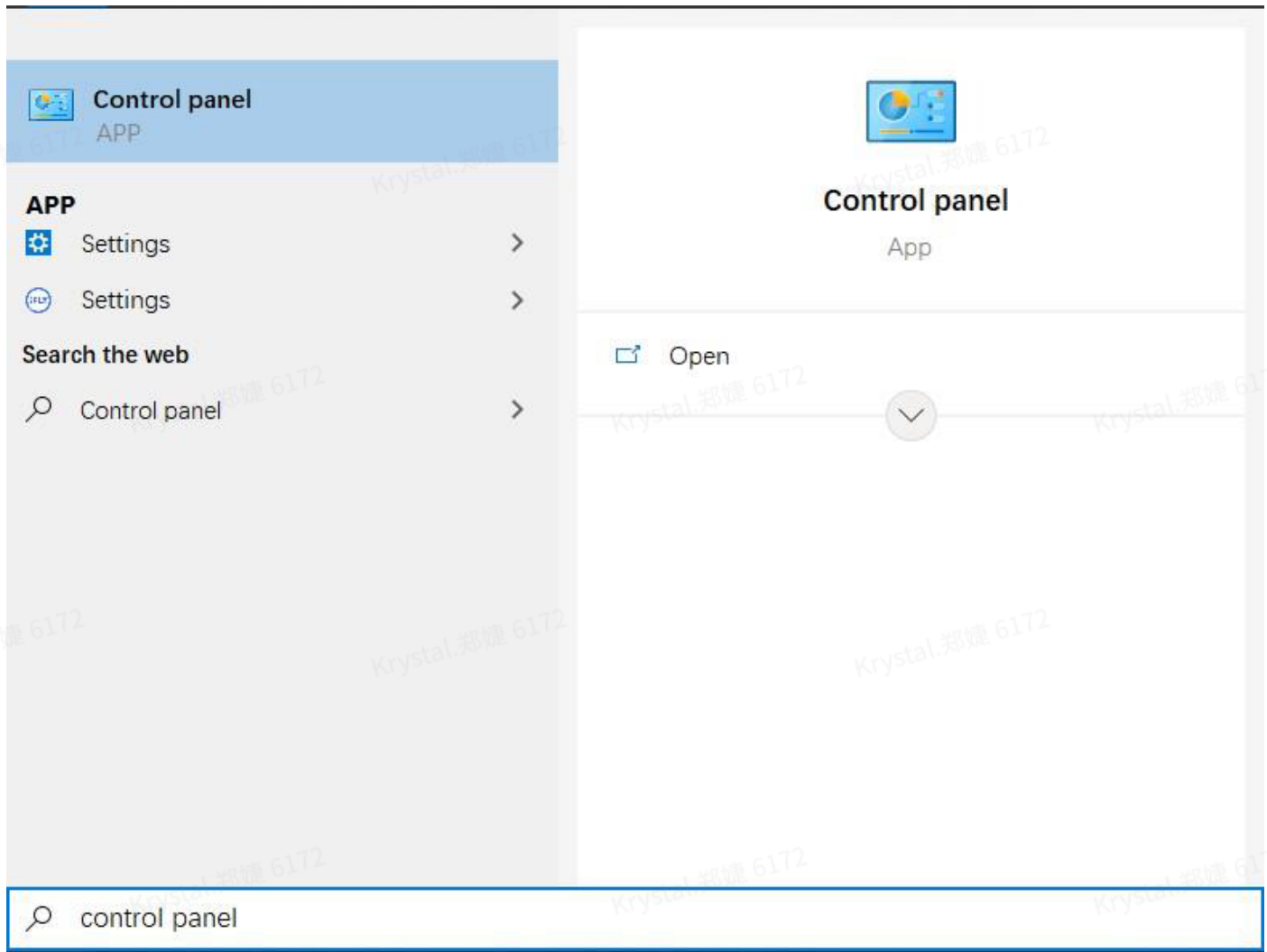
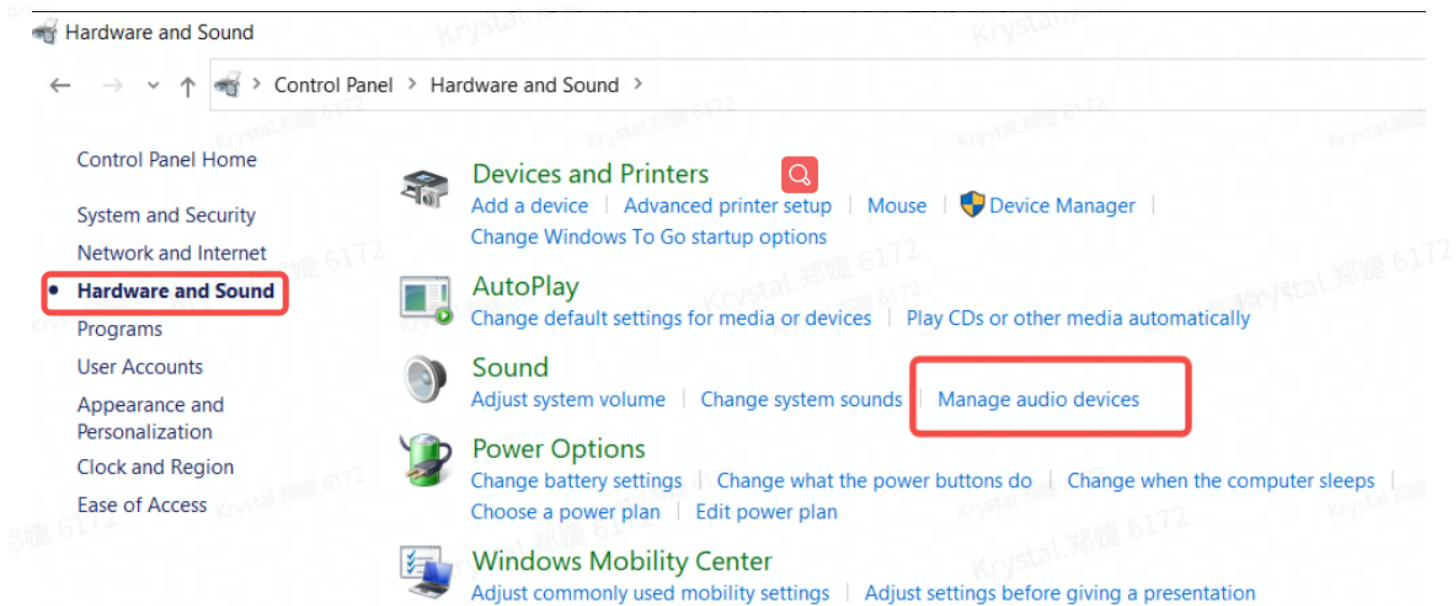


How to set my device as default?

1. Search for "Control panel" in the lower left corner, open the control panel, and select "Hardware and Sound".

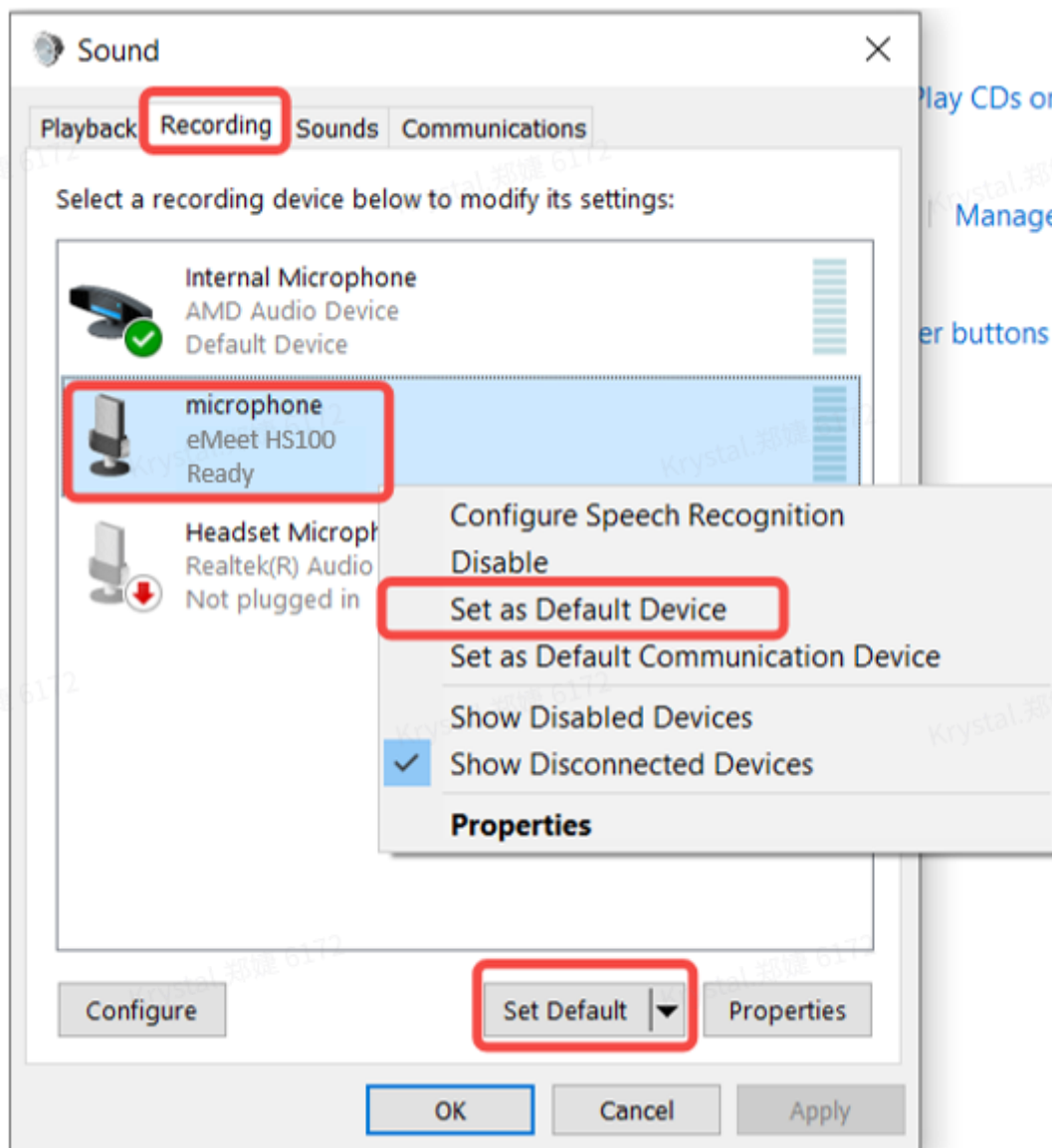


2. Select "Manage audio device" in sound.



3. Set HS100 as the default microphone

- Click the Recording tab on the top of the displayed setup window.
- Under the Recording tab, select EMEET HS100, and then click the Set Default button.



4. If you want to adjust the microphone volume

Double click the microphone "eMeet HS100" and click "levels".

Drag the slider to the volume level you want, and click "OK" to save the changes.



5. Set HS100 as the default speaker

- Click the Playback tab on the top of the displayed setup window.
- Under the Playback tab, select eMeet HS100, and then click the Set Default button.
- Click OK to save your changes.

Sound

Playback

Recording

Sounds

Communications

Select a playback device below to modify its settings:



数字输出

AMD High Definition Audio Device
Not plugged in



speaker
eMeet HS100
Ready



Speaker
Realtek(R) Audio
Default Device



Headphone
Realtek(R) Audio
Not plugged in

Configure Speakers

Test

Disable

Set as Default Device

Set as Default Communication Device

Show Disabled Devices

☒ Show Disconnected Devices

Properties

Configure

Set Default

Properties

OK

Cancel

Apply