
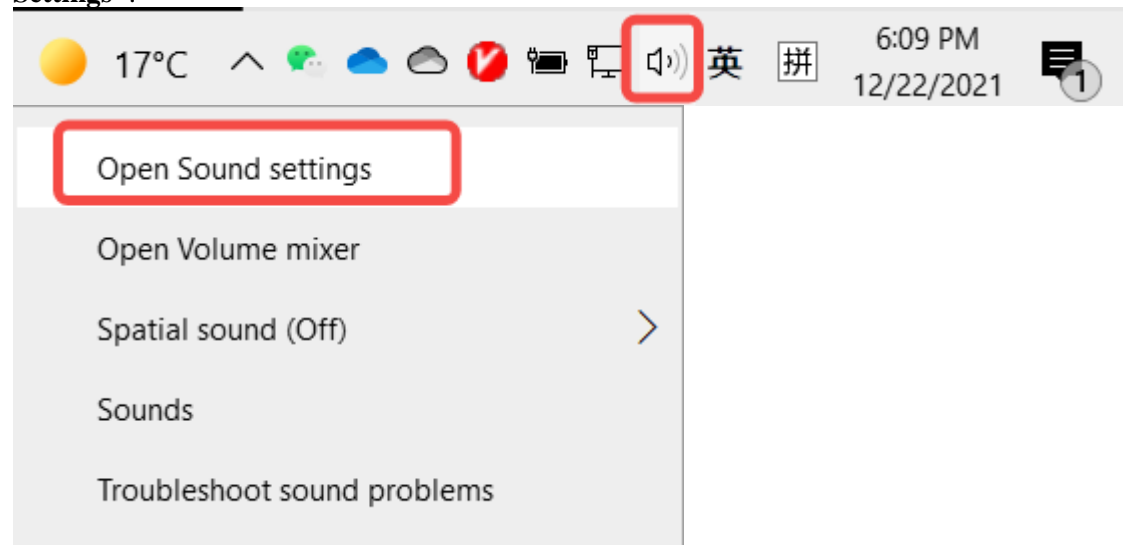


How to set up my device on the Windows system?

Connect your device to the computer at first.

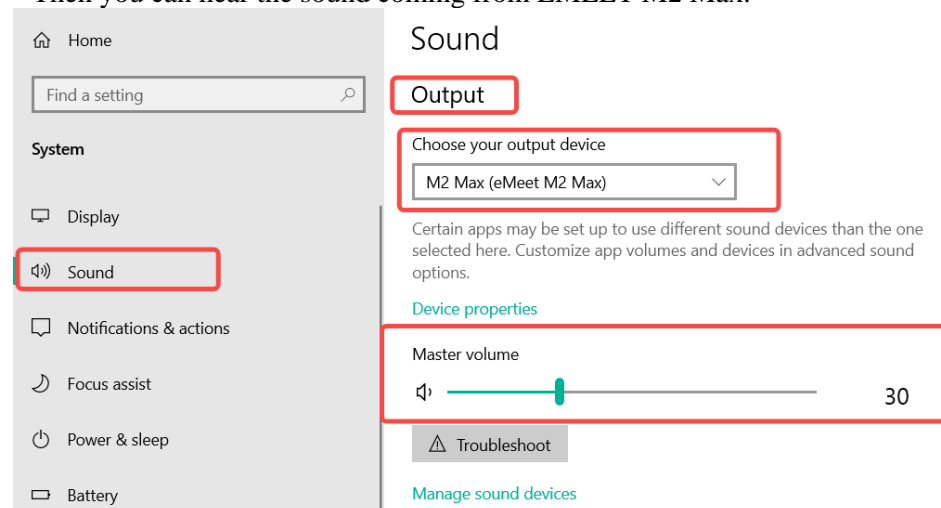
1. Open the sound setting page

Right-click the  icon from the lower right corner of the computer, then click "Open Sound Settings".



2. Test the speaker of EMEET M2 Max on your computer:

- Select EMEET M2 Max as the output device.
- Just simply play music or video on any website or software.
- Adjust the device's volume according to your needs.
- Then you can hear the sound coming from EMEET M2 Max.



3. Test the microphone of EMEET M2 Max on your computer:

- Select EMEET M2 Max as the input device.
- Tap the device or say something.
- Then you can see the volume bar fluctuates.

Input

Choose your input device

M2 Max (eMeet M2 Max) 

Certain apps may be set up to use different sound devices than the one selected here. Customize app volumes and devices in advanced sound options.

[Device properties](#)

Test your microphone



Troubleshoot

[Manage sound devices](#)