

CAUTION: Maintenance

- 1. Replacement parts may be available at the store where you purchased your faucet.
- 2. Always turn off water and relieve pressure before working on your faucet.

NOTES: Cleaning Instructions

- 1. To keep the faucet clean, you should clean the faucet frequently and regularly.
- 2. Clean the faucet with clear water or mild liquid, rinse the faucet with clear water and then dry the faucet with soft cotton cloths.
- 3. Do not use any abrasive cleansers, cloths, or paper towel.
- 4. Do not use any acid or abrasive detergent.

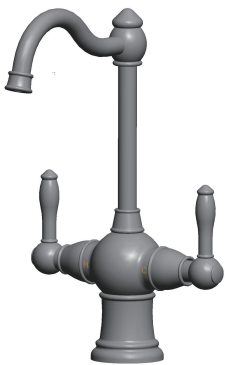
TROUBLE-SHOOTING

If you've followed the instruction carefully and your faucet still does not work properly, take these corrective steps.

Problem	Cause	Action
Leaks underneath handle.	Cartridge has come loose.	Tighten the cartridge.
Water will not shut off completely.	Dirty or worn out washer in cartridge.	Remove handle and cartridge to check if the washer is damaged permanently or dirty. Re-install or replace cartridge.



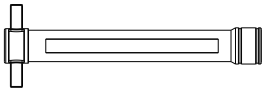
Water Filter Faucet



COMPONENTS IN THIS PACKAGE



Metal gasket & Nut



Socket wrench



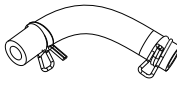
Allen wrench



Quick connector for 1/4 inch tube (2)



Quick connector for 3/8 inch tube



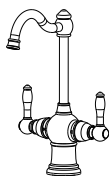
flexible white 7/16" tube & Clips (2)



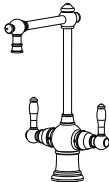
Snap-connect fitting & Clip (Applicable to special connector)

1/4" tube

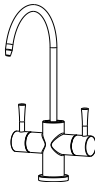
Identify the model of your water filter faucet:



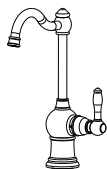
96218A1



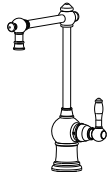
96218P1



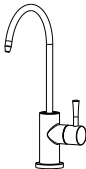
96266



97718A1



97718P2



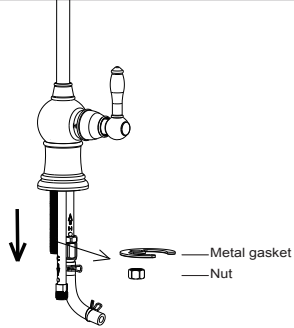
97766

IMPORTANT NOTICES: For easy installation, please read all the instruction completely before beginning. Before installing this product, make sure that water line trash is cleared to avoid blockage.

Questions, problems, missing parts?
call Akicon Customer Service 8 a.m.-6p.m. EST, Monday-Friday
Phone: +1 (302) 213 4406, Email: service@akiconshop.com
AKICONSHOP.COM

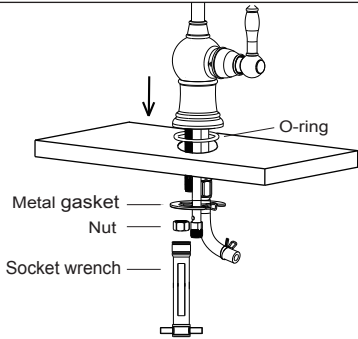
INSTALLATION PROCEDURES

1



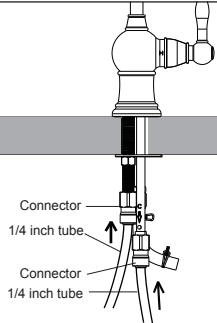
Take out the faucet and unscrew the nut and metal gasket in sequence.

2



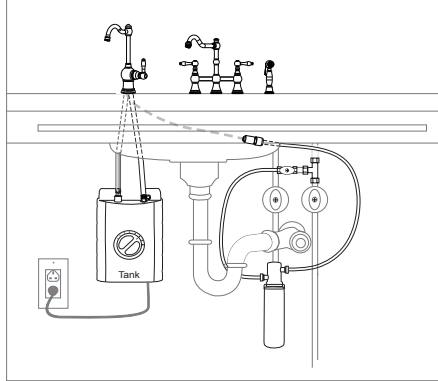
Check that the bottom of the base has O-ring. Install the faucet through the hole on the sink, and then place the metal gasket and nut from the bottom of the sink in sequence, put the faucet in the correct position and tighten the nut with a socket wrench.

4

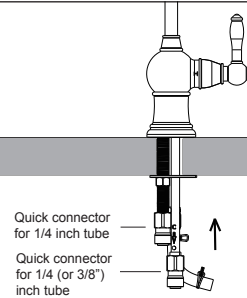


Insert two 1/4 " tubes into two connectors respectively until it stops. (Note: You need to prepare 1/4" tube.)

OVERVIEW OF A COMPLETED SETUP

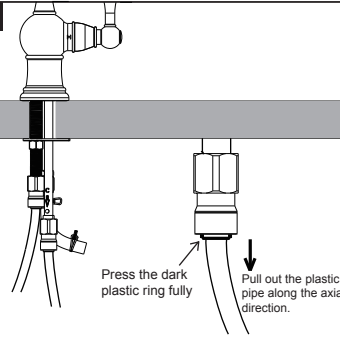


3



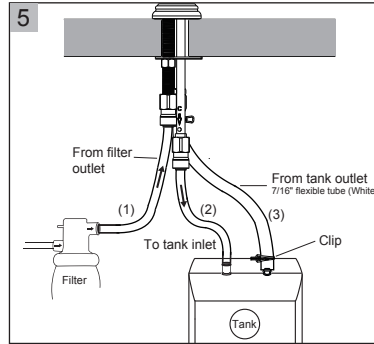
Screw the quick coupling to the threaded brass pipe and copper pipe respectively, and tighten it slightly with a wrench. (Notice: you don't need a lot of torque.)

NOTICE



If you want to pull out the plastic pipe, do not pull it out by force at will. First, you must completely press the dark plastic ring and pull out the plastic pipe along the axial direction at the same time. Your improper operation may damage the connector and cause leakage.

5



NOTICE

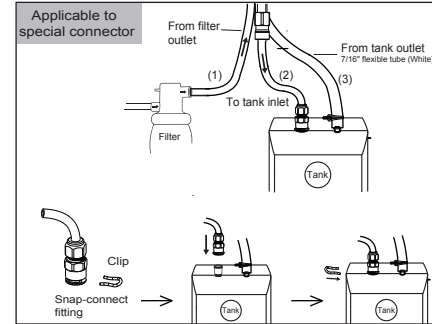
Property Damage: Check for pinched or crimped tubes. Do not pinch or break copper tubing. Pinched or blocked water lines may cause damage to the dispenser tank. Check to make sure tubes are connected properly and are pushed down as far as possible.

OVERVIEW OF A COMPLETED SETUP

- (1). Connect the 1/4 " tube connecting the brass pipe to the outlet of the filter.
- (2). Connect the pipe connected with the "To tank inlet" label to the inlet of the tank.
- (3). Slip the flexible White 7/16 "pipe onto the tank outlet connector and slide down approximately 1/2". Next, compress the ears of the clip with pliers to enlarge its inner hole, and slide the clip to the matching part between the pipe and the joint. Gently pull the flexible pipe and check both ends.

Notice: 1. If the connector on the tank is not 1/4", you may need to purchase an adapter for the tank.
2. Determine length of tubing required, then cut to length making sure the cut is perpendicular and burr-free, flexible white 7/16 "pipe should be as short as possible.

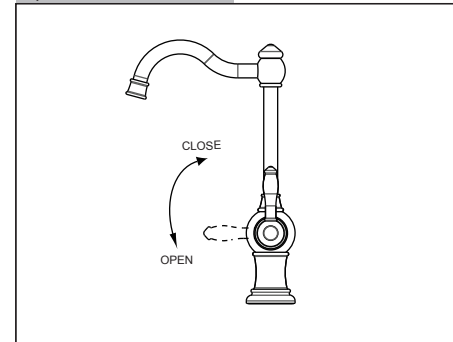
Scalding Hazard: The faucet dispenses near-boiling (212°F) water which can instantly cause scalds or burns. Use care when operating this appliance.



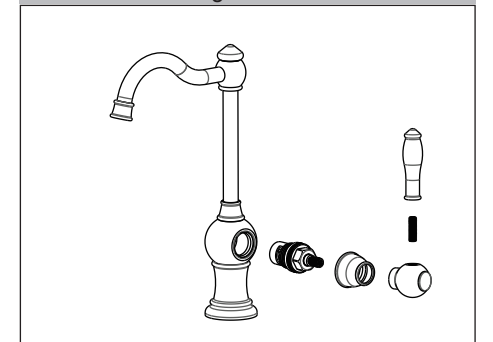
First pull out the clip on snap connect fitting, and then place the snap-connect fitting at the end of the blue tube onto the fitting with O-ring on the tank, pushing until it clicks into place. Insert the clip into snap connect fitting, pushing until it clicks into place.

Notice: try to pull the Snap connect fitting to check that it is fully installed and does not disengage.

Open or close the valve.



Handle and cartridge removal maintenance.



Turn off the water and release the pressure! Screw off the handle rod, use the hexagon wrench to screw out the set screw and take off the handle. Unscrew Dome Cap counter clockwise by hand. Screw out cartridge assembly with a spanner wrench and check. Replace parts as necessary. Reassemble parts by reversing steps.