

Mac KM Link

User Manual

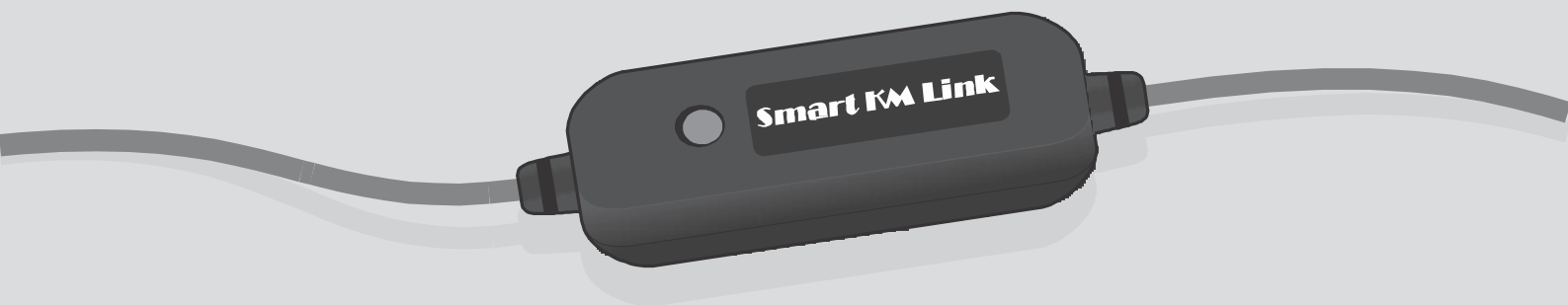


Table of Contents

Overview	3
System Requirements	3
Features	3
Support Language.....	3
Getting Started	4
Changing the Settings	6
Keyboard & Mouse Control Switching Settings	6
Clipboard Share Options	8
Event Notifications	8
Other Settings.....	8
Sharing Keyboard and Mouse.....	10
Clipboard Sharing.....	11
File Transferring.....	12
GO! Bridge for File transferring	13
GO! Bridge for Windows:.....	13
GO! Bridge for Mac	15
Android Online Step.....	14
Dock Introduction.....	16
File Transfer	17
Technical Support	17

Overview

Congratulations on your purchase of the **Mac KM Link**, a USB file transfer cable.

Nowadays, more and more people own more than two computers. Due to space limitations, most people choose Windows Notebooks, Android Tablet PCs or Mac as their second computer. **Mac KM Link** provides a simple and easy solution which lets you share the keyboard and mouse usage with another computer or different operating systems.

In addition, GO! Bridge is a user-friendly and simple data transmission (Windows to Mac or Mac to Mac or Android) application via a USB transfer cable to connect two computers. It combines high speed transmission and non-technical requirement which help easily transfer and share data between two computers.

System Requirements

- PC running Microsoft Windows 2000 SP3 / Win XP / Vista / Win 7 (32-bit or 64-bit)/ Win 8 (Windows 8 RT Excepted)/ Mac OS X 10.5 or later/ Google Android 2.2/3.0/3.1 later(*)
- Intel Pentium II Processor or later / PowerPC G4 processor or later
- 256MB RAM or higher
- Hard disk space requirement of at least 50MB
- Built-in USB port 1.1 or 2.0 or 3.0

* You have to install the driver: Mass storage class driver /Human Interface Device driver (keyboard and mouse) in android system.

Features

- No installation CD is required, simply plug-and-play.
- Keyboard and mouse sharing.
- Single cable solution for files transfer.
- Clipboard sharing.
- Drag-and-drop user-friendly interface.

Support Language

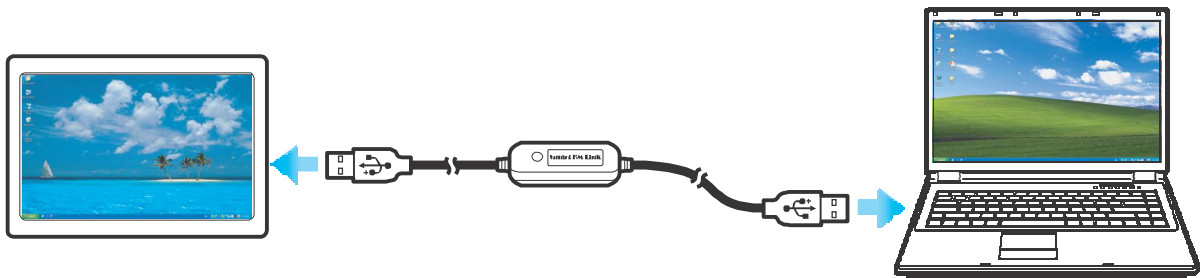
These products support a total of 11 languages—Simplified Chinese, Traditional Chinese, English, Korean, Japanese, Portuguese, Spanish, German, French, Russian, and Italian. The application will display the appropriate language interface according to your operating system's language settings.

Getting Started

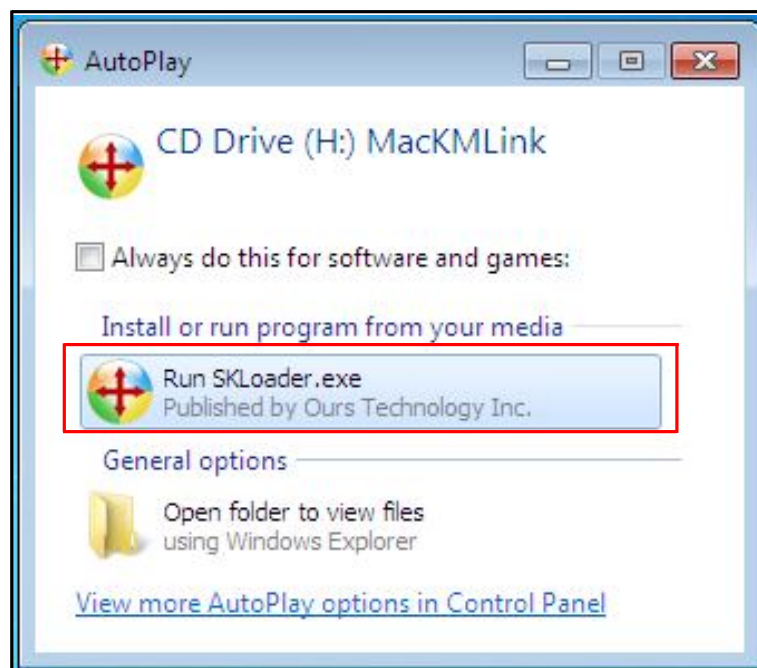
With simple plug-and-play feature, you can easily connect the two computers via the USB port.

Follow these steps to configure **Mac KM Link** connection and start with its application:

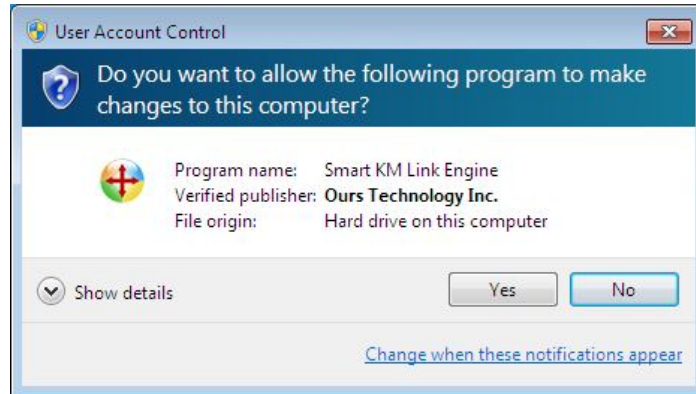
1. Connect one end of the **Mac KM Link** to a standard USB port on one of the two computers you are connecting.
2. Connect the other end of the **Mac KM Link** to a USB port on the second computer.



3. Wait until Windows has finished installing the device driver software on both computers.
4. Windows may ask you to select **Autoplay** options. Click on the option “**Run SKLoader.exe**”.



5. If the “User Account Control” window appears on the screen, click **Yes** to continue.



6. You are now ready to operate the **Mac KM Link** application. A pop-up message appears at the bottom right of the screen.



Troubleshooting:

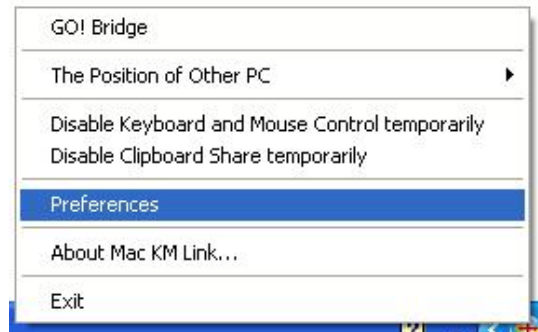
If the **Mac KM Link** application fails to start automatically, do any of the following:

- Check that each connector on the USB cable is correctly inserted on your two computers.
- Go to **My Computer** and double-click the **MacKMLink** icon to start the application.

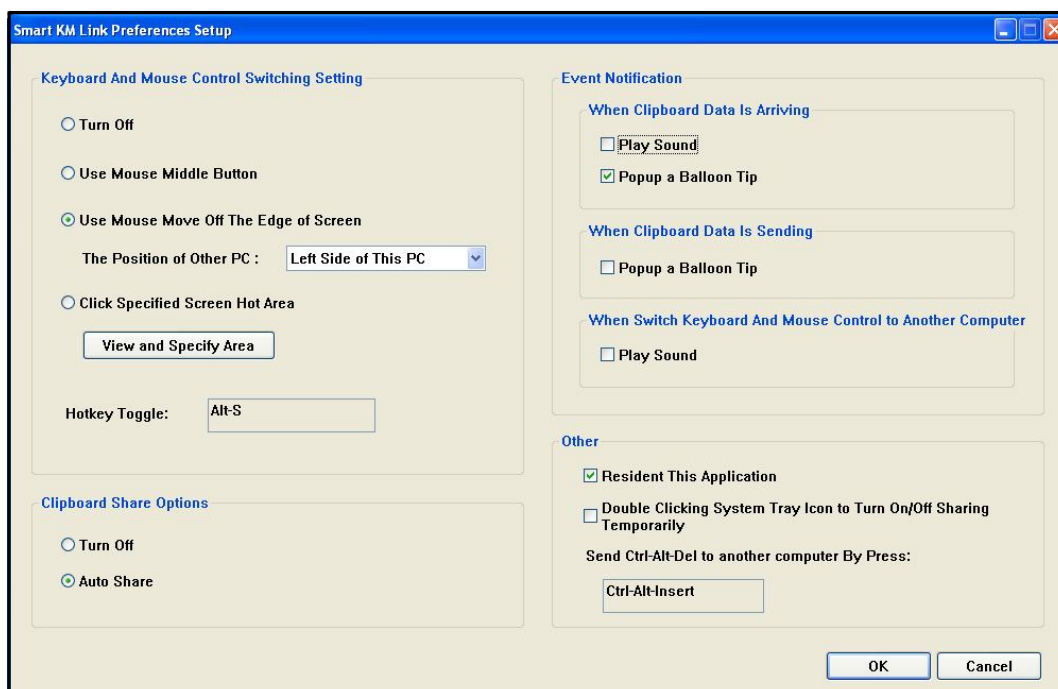


Changing the Settings

To customize the **Mac KM Link** settings, click the **Mac KM Link** icon (🌐) at the bottom right of the screen. Select **Preferences**.



The **Preferences Setup** screen is displayed.



Keyboard & Mouse Control Switching Settings

This option allows you to switch the control of keyboard and mouse from one computer to another.

Select one of the following options:

- **Turn Off**

Disable keyboard and mouse switch.

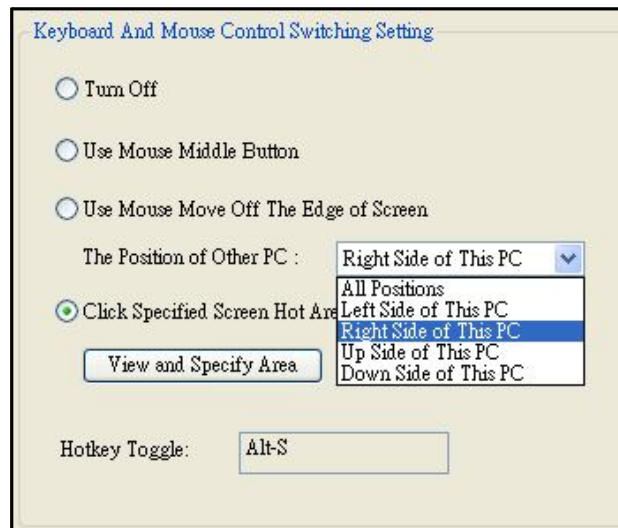
- **Use Mouse Middle Button (Win is as control side)**

Click the middle button of the mouse to switch the keyboard and mouse control from one computer to another.

- **Use Mouse Move Off the Edge of Screen (Do not support by Win to Android or Mac to Android)**

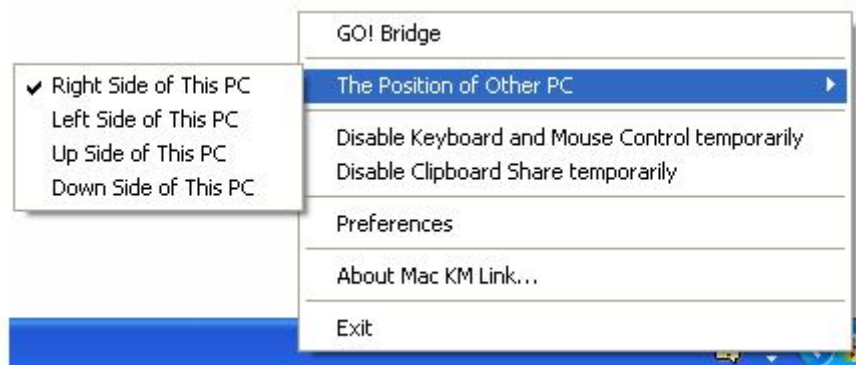
Select this option to switch the control of keyboard and mouse from one computer to another by moving the mouse off the edge of the screen.

Select the desired position. Click on the pull-down menu to see more options.



Tips:

You can also change this setting on the pop-up menu that appears on the screen when you click the **Mac KM Link** icon (🌐). Select **The Position of Other PC**, and then select one of the options.



- **Hotkey**

Press both **[Alt+S]** buttons on the keyboard to activate the control switching.

Clipboard Share Options

This option allows you to enable or disable the clipboard sharing. With clipboard sharing feature, you can easily copy or paste clipboard contents between the two computers.

- **Turn Off**
Disable keyboard and mouse switch.
- **Auto Share**
Enable the automatic sharing between the two computers.

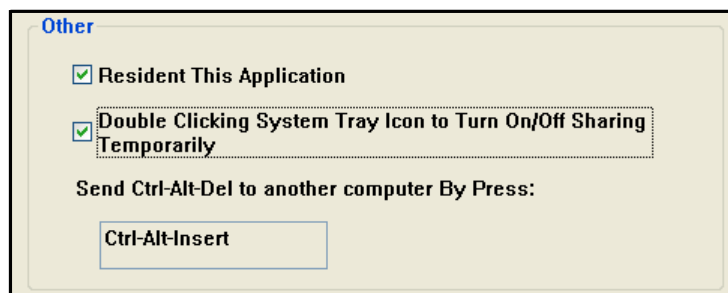
Event Notifications

This option allows you to set the type of notification when receiving/sending clipboard data or switching the keyboard or mouse control to another computer. You can set either to play sound or to display a pop-up balloon tip.

For example, a pop-up balloon tip appears when you copy data from the first computer and paste the data to the second computer.

Other Settings

You can set the following for three settings:

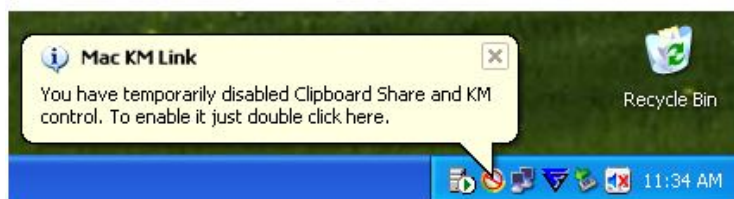


- If you check on “Resident This Application”, the program automatically starts up after you plug in the device.
- To enable the temporarily disable clipboard sharing and KM (keyboard and mouse) control functions by double-clicking the **Mac KM Link** icon (🌐) at the bottom right of the screen, check “Double Clicking System Tray Icon to Turn On/Off Sharing Temporarily”.



Tips:

When the above function is enabled, you can double-click the **Mac KM Link** icon (🌐) to temporarily disable clipboard sharing and KM (keyboard and mouse) control functions.



Double-click the **Mac KM Link** icon (🌐) again to enable the two functions.

- Alternative keys option for the [Ctrl-Alt-Del] command for another computer.

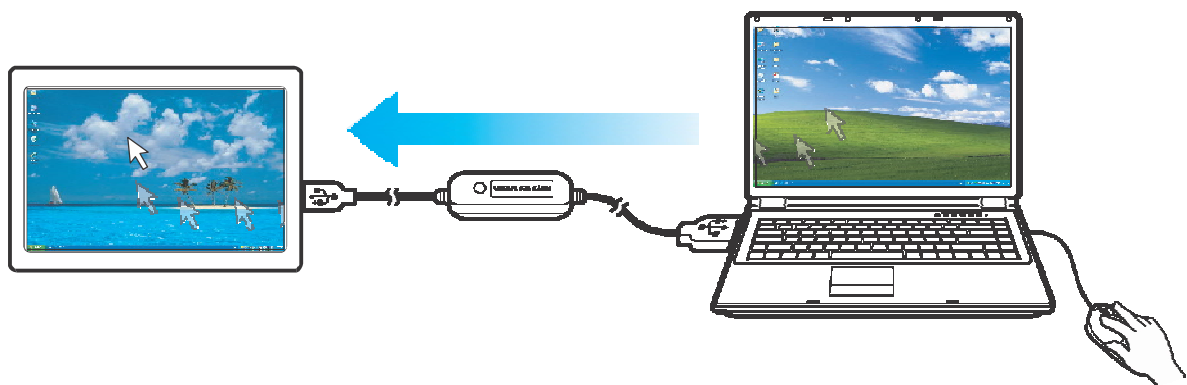
Sharing Keyboard and Mouse

After you have configured the settings on the previous section, now you can start using your computers.

To switch the cursor location to another computer:

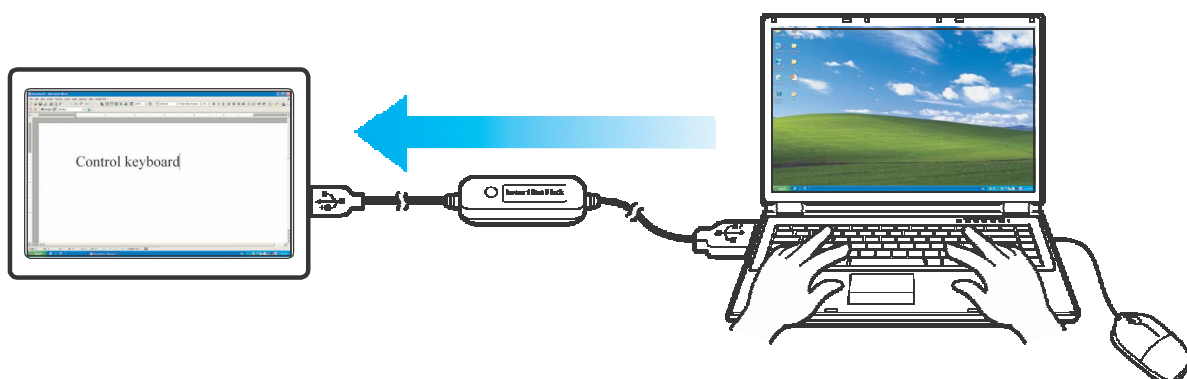
The action depends on the prior setting that you have chosen on the “Keyboard & Mouse Control Switching Settings” on page 6.



If you set **Use Mouse Move Off the Edge of Screen > Left Side of this PC**, move the mouse until the edge of the left side screen. The cursor is now at your second computer and you can start using your second computer with the mouse.



To switch the keyboard usage to another computer:

1. Move the cursor to your second computer.
2. Open any editing software such as WORD, EXCEL, Power Point, etc.
3. Use your first computer keyboard to enter the text on the file.



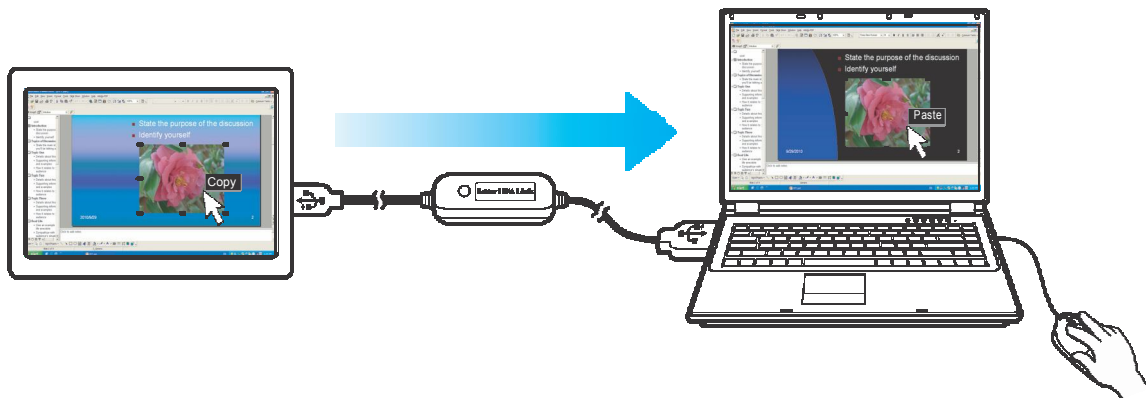
 **Note:** The **Mac KM Link** icon varies depending on the function. For example, when switching the keyboard or mouse control to another computer, the  icon appears at the bottom right of the screen.

Clipboard Sharing

With the clipboard sharing feature, you can easily edit, copy or paste clipboard contents between the two computers.

For example, to copy an image file on PPT(Power Point) file to another PPT file on the other computer:

1. Open the “source” file and right-click on the image that you want to copy, and select **Copy**.
2. Move the cursor to the other computer, and open the “destination” file.
3. Move the cursor to the location that you want to place the picture, and right-click, then select **Paste**.

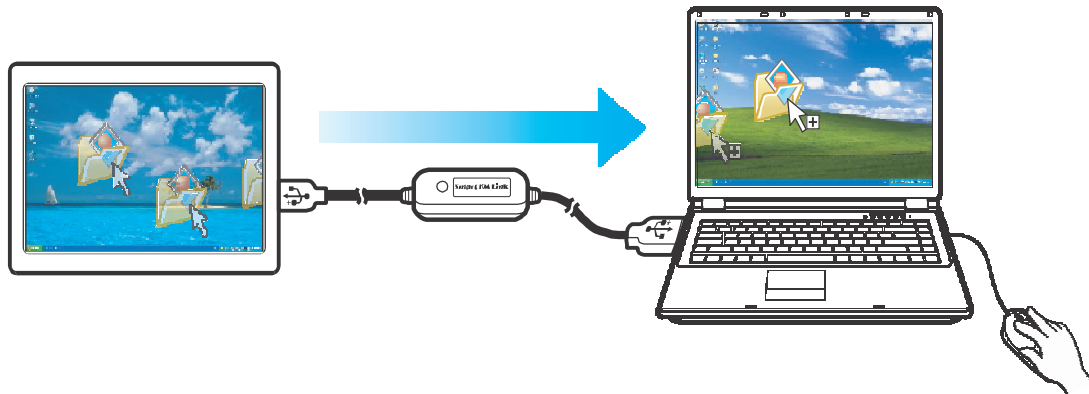


Note:

- You can also do the same way as above to copy text or files.
- The **Mac KM Link** icon varies depending on the function. For example
- When receives the clipboard data from master computer, the icon of the client computer will change to (🖨️), once the client computer is under controlling at same time, the icon changes to (🖨️🖨️) to indicates the double state of current operation.
- If you copy the data from the client computer, the icon will change to (🖨️), no more the double state appears.
- Do not allow to share photo or pictures by Win to Android or Mac to Android.

File Transferring

With the keyboard and mouse sharing function, it is easy to manage files between the two computers. Simply drag and drop the file or folder between the two computers to transfer files. **(Drag and drop do not supported in Android device)**



Besides using the drag and drop method, you can also do the following to transfer files between the two computers:

- **Copy & Paste:**

1. Right-click on the file that you want to copy, and select **Copy**.
2. Move the cursor to the other computer.
3. Move the cursor to the location that you want to place the file, and right-click, then select **Paste**.

- **Keyboard's hotkeys:**

1. Click on the file that you want to copy, and press the [**Ctrl+C**] buttons.
2. Move the cursor to the other computer.
3. Move the cursor to the location that you want to place the file, and press the [**Ctrl+V**] buttons to paste the copied file to another computer.

GO! Bridge for File transferring

GO! Bridge for Windows:

Please click the **Mac KM Link** icon (🍏) at the bottom right of the screen. Select **GO! Bridge**.

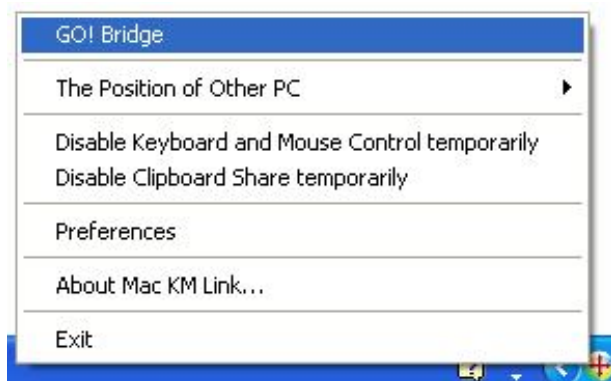


Figure1

The initial Window Mode of GO! Bridge you launch is as below. .

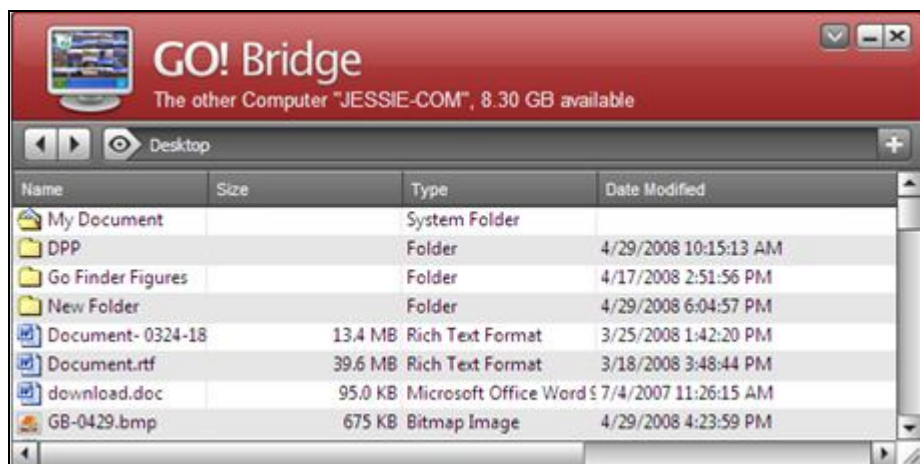


Figure2 Window Mode

Device Icon

When GO! Bridge is launched, it shows the other PC's desktop of Device Icon on Window Mode of your PC.

Active Information

On the title bar of 錯誤! 找不到參照來源。 , the active information shows the space available of the other PC.

Option

Left click on the  icon, a pull-down menu will pop up for users to select.

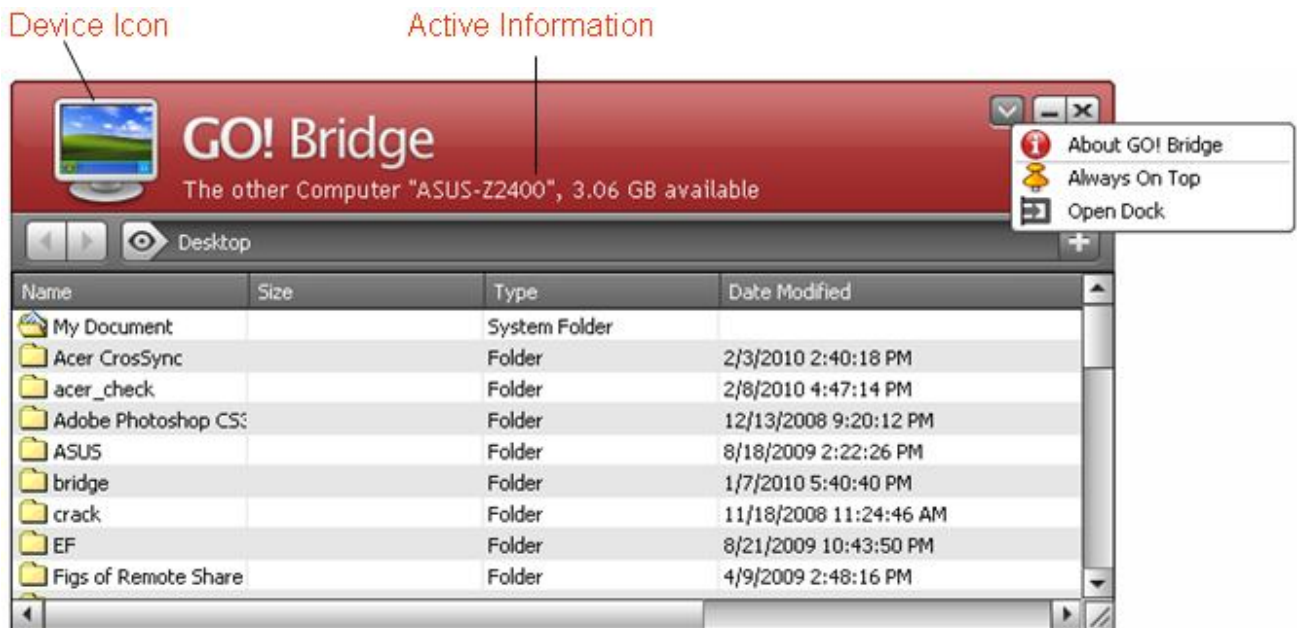


Figure 3 The menu of Option on GO! Bridge

About GO! Bridge

Click it once, the information including the revision of GO! Bridge will be shown as Figure 4.

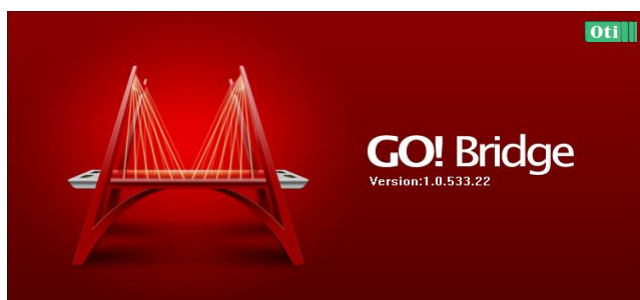


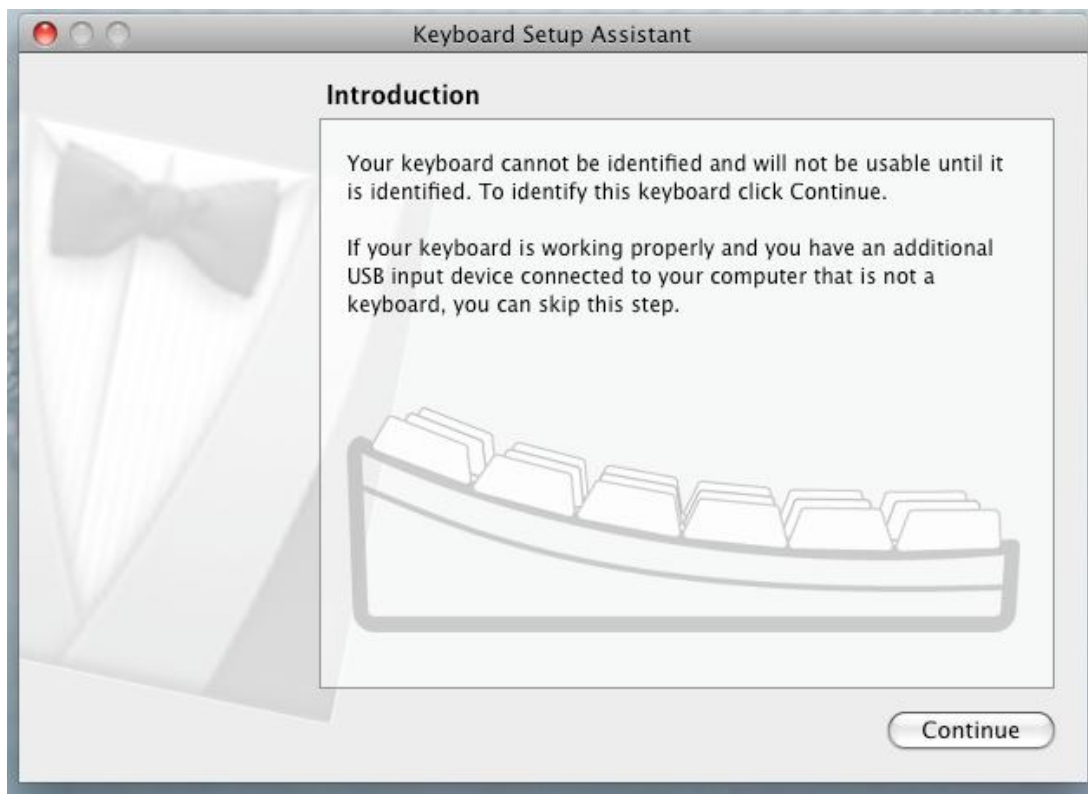
Figure 4 The version of GO! Bridge

Always on top

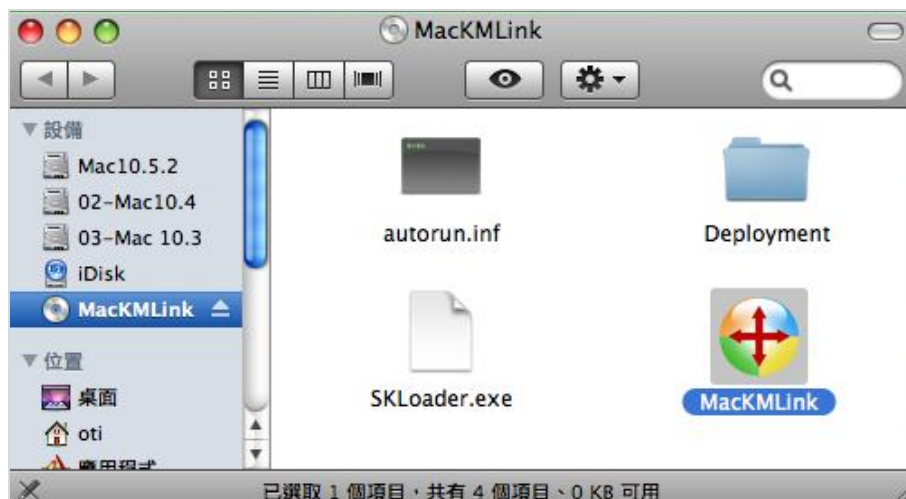
If you select it, Window Mode will be always on top of the window. To cancel this option; please click "Disable Always on Top" on the pop-up menu on Window Mode.

GO! Bridge for Mac

In first time using when you connect the **Mac KM Link** to MAC computer, there is an assistant window popped up. It's a normal situation, close this window to continue.



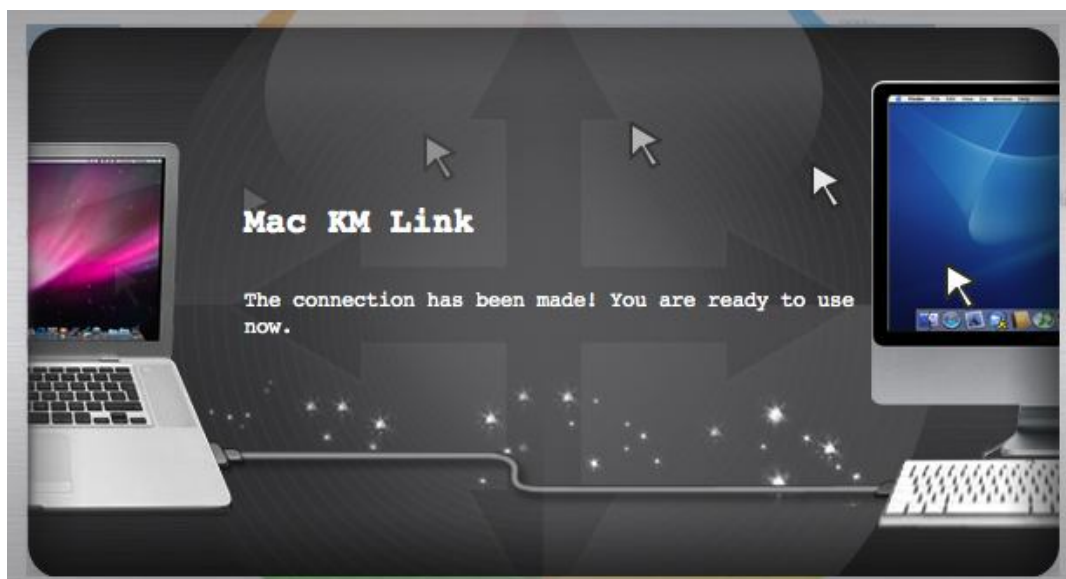
Open MacKMLink CDROM on desktop and then double click GO! Bridge icon to execute the application.



When the connecting is created properly in first time using, a welcome windows appears on the screen as following:



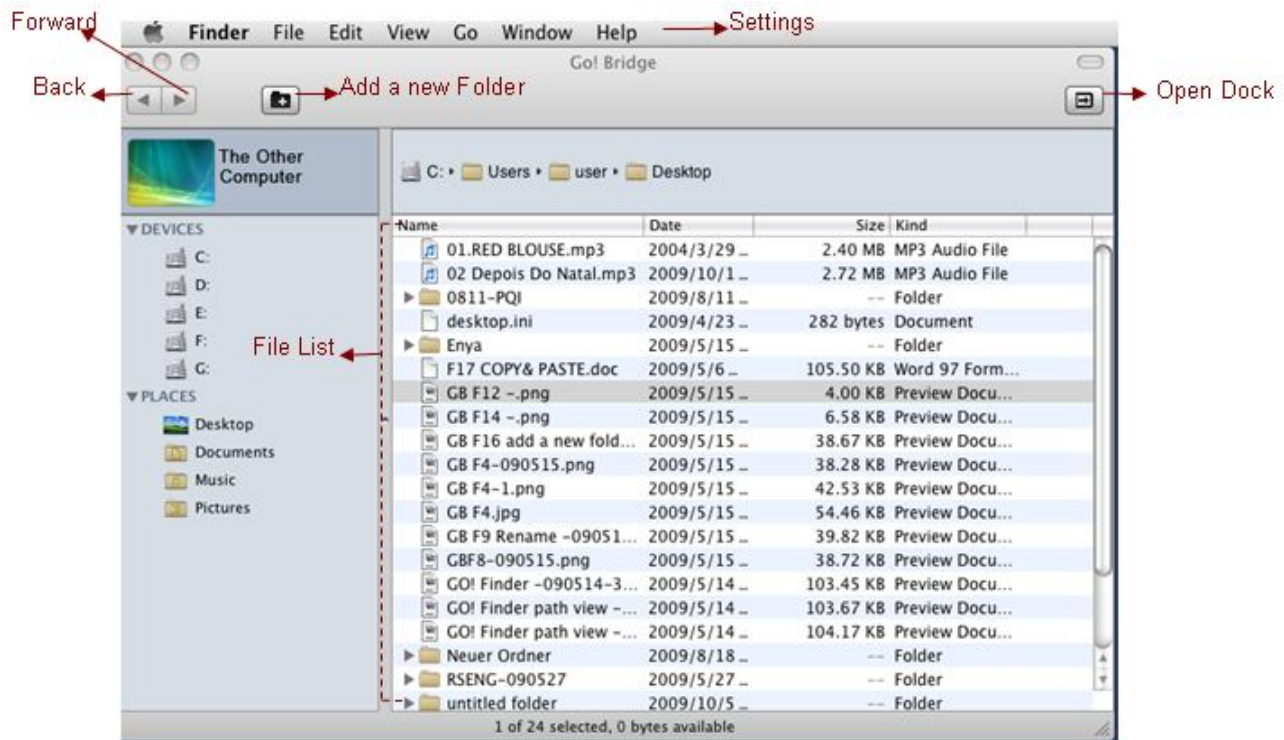
After the first time connection, the window appears as following:



Tips :

Mac KM Link will resident its application on default that means the program automatically starts up whenever you plug in the device.

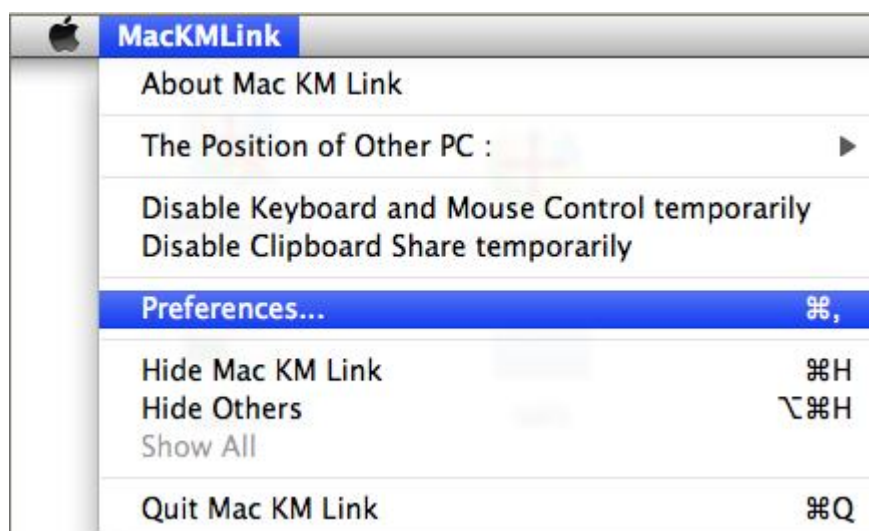
Below is the introduction of each function of GO! Bridge.



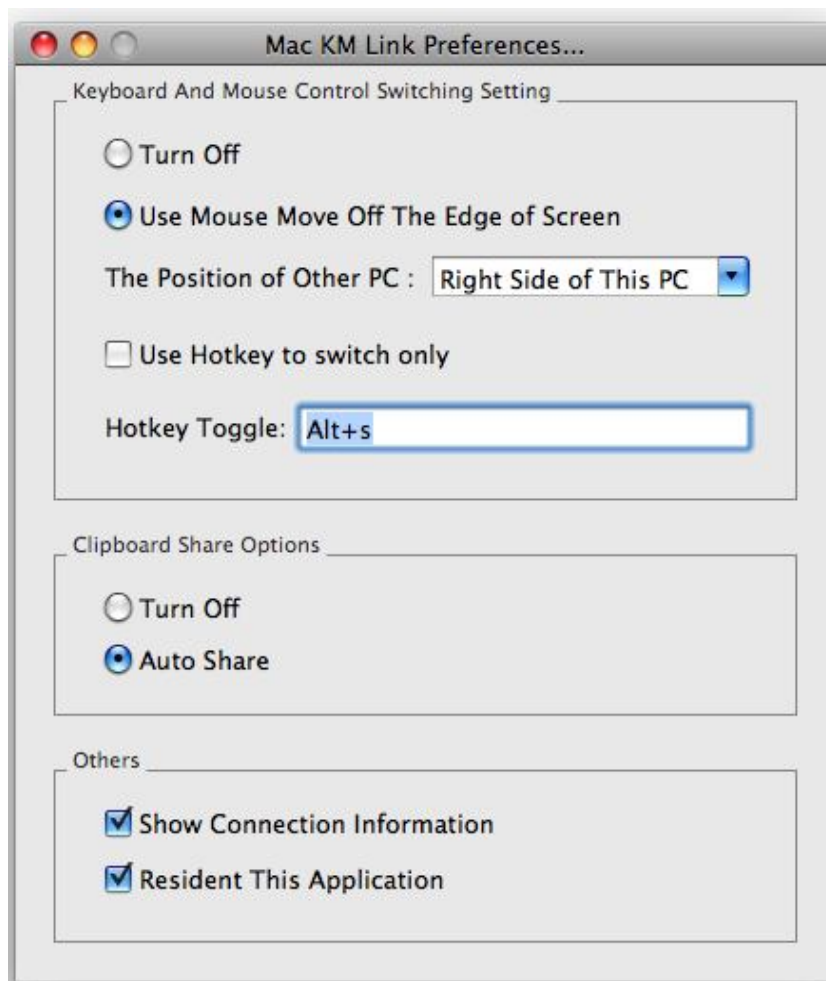
Window Mode of GO! Bridge Mac

Preferences

To customize the **Mac KM Link** settings, click the **Mac KM Link** icon (🍏) at the bottom right of the screen. Select **Preferences**.



In **Preferences Setup** page that shows three preference items 「**Keyboard And Mouse Control Switching Setting**」, 「**Clipboard Share Options**」 and 「**Others**」:

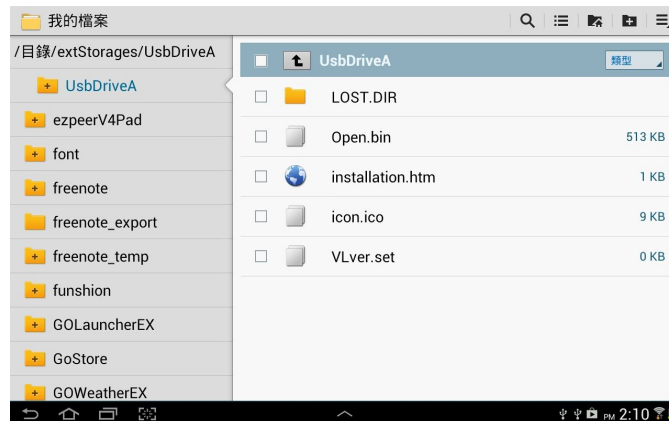


Android Online Step

Before you start using Tablet bridge, please make sure the Windroid Linker has been installed and launching properly.

First Windroid Linker Installation

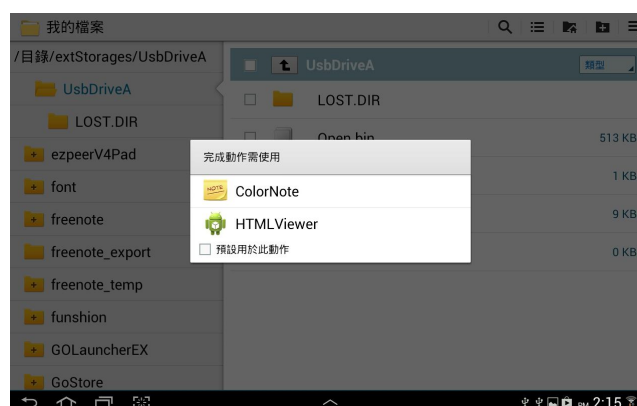
1. Click installation.htm



2. Connected



3. Click HTML Viewer



4. Click [here](#)

HTMLViewer

Hello, thank you for choosing WinDroid Linker.
Please click [here](#) to download the latest version of the WinDroid Linker app to your Android device.
We hope you enjoy your new way to connect your Android device to your computer via WinDroid Linker!

5.

- (1) Find the App with the keywords "Windroid Linker" on the Android Market, install it to enable the functions.
- (2) Copy and install the Windroid Linker APK from a thumb drive or memory card.
- (3) Download the Windroid Linker APK then install it on the system.

The Windroid Linker indicates its states by means of following UI changes:

Offline or in initial stage: :



Connected (Standby) :



Android is ready:



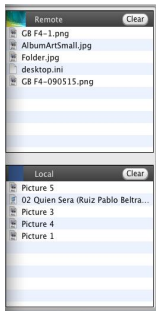
6. After installed Windroid Linker, you just press the icon below in Android APP list then it will auto run the GO! Bridge transfer software.




Dock Introduction

You can collect files on Dock and then drag all the files to the destination for once. Therefore, it's not necessary to copy a single file every time and then wait for the file transfer. It's very convenient for two computers to work together.

Dock Area:



1. On Window mode, click  to open Dock area. Right click the files on the file list and select “Add to Dock”, the files will be added on the Dock area.
2. Right click the file on Dock area to copy, remove from Dock and select all items on Dock which helps users easily manage file transfer between two computers.
3. Drag and drop files to Dock area and paste batch files once between two computers.
4. Press” Clear” button to remove all items on Dock.

Add a new folder:

Click  to quickly add a new folder on the file list.

File List:

Right click on the file of the file list to open, add to Dock, Rename, copy, paste, and move to trash the files selected on the file list.

Settings:

Settings of GO! Bridge can be also be edited and selected under the function menu on the top of the window; from left to right are **GO! Bridge**, **File**, **Edit**, **View**, **Window** and **Help**. Below is the quick introduction of each menu.

- Click **GO! Bridge**, the pull-down menu shows “About GO! Bridge”(the version of GO! Bridge), Preferences (you can select “Keep icon mode on top of the other window” or “Show warning before deleting items), Services”, “Hide GO! Bridge”, “Hide Others”, “Show All” and “Quit GO! Bridge”.
- Select **File**, you can create a new folder or execute “Open”, “Close” or “Move to Trash” of the selected file on the pull-down menu.
- Click **Edit**, the pull-down menu show “Cut”, “Copy”, “Paste”, “Select All” and “Special Characters” to edit the selected files.

- Choose **View** option, you can select “Refresh the window”, “Show/Hide Path Bar”, “Hide Status Bar”, “Hide Toolbar”, “Customize Toolbar” and “Show View Options” on the pull-down menu.
- Select **Window** option, the pull-down menu shows Minimize, Zoom, GO! Bridge Main Window and Show Dock. Select **Help** option to search for the help from Mac.

Wallpaper of the other computer:

The wallpaper of the other computer displays on the top left corner of window mode for users to recognize the computer they are use now.

File Transfer

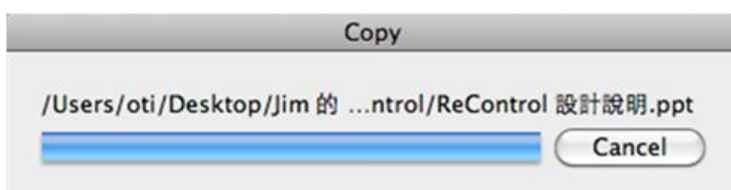
There are three ways to transfer files on GO! Bridge Mac.

1. GO! Bridge allows user to transfer files via the dock area for once.
2. You can transfer files directly via copying the file from the source to the destination you wish to paste on the file list on Window Mode of the other PC.
3. User can simply drag the file and drop it on Icon Mode of the other PC; however, it only allows you to transfer the file to the desktop of the other PC. A progress Information window will pop up to notice you that the file transfer is in progress; press "Cancel" if you wish to abort the file transfer.

Note:

When you use Go-Bridge windows link to Android , the windows side is control master.

When you use Go-Bridge Mac link to Android , the Mac side is control master.



Technical Support

If you need further assistance, please contact our technical support team.

Email: support@oti.com.tw

Telephone: +886 (0)3 5537511