

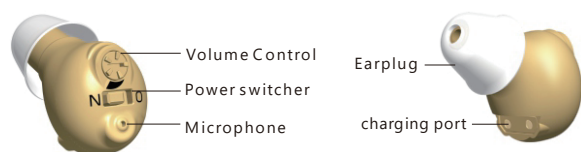
Tumin




Hearing Aid

Model:C600

02/Device Structure

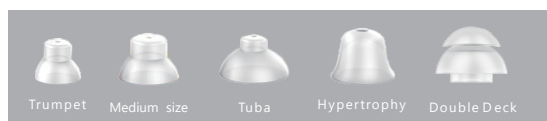


Label, label interpretation:

" N" --- is power on.	"  --- is volume grade.
" O" --- is power off.	

04/Replace The Earbuds

Choose the right size for the user, then connect the soft gel to the main hearing amplifier, which is equipped with five different sizes of earplugs.



Note:

Please try to find a suitable size of earbuds to fit tightly in your ear if there is the whistling happened

06/Volume Control

Adjust the volume by a screw driver:

1. Turn volume up by clockwise rotation
2. Turn volume down by anti-clockwise rotation

Remark:

Keep the volume at low level when you wear it first time. Then you can increase the volume up slowly to find the best sound level



01/Product List



Hearing device



Charging box



charger adapter



Earplugs



Bolt driver

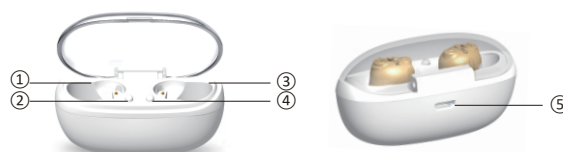


Cleaning brush



Chargingline

03/ Charger Structure



① Left charge holder ② Left indicator ③ Right charge holder	④ Right indicator ⑤ Charging interface
---	---

07/Power Switch

To turn your device on, turn the power switch to the side labeled "N."
To Turn your device off, turn the power switch to the side labeled "O."



ON



OFF

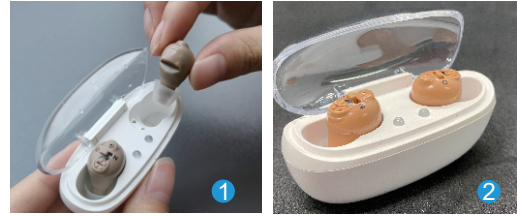
08/Inserting Into Ear

The device does not have a right or left specific side, but instead is interchangeable. Simply hold the hearing amplifier upright, then insert into the ear as deep as is comfortable.



09/Charging The Hearing Device

1. When the device volume turned down or not working well, it might be in low power. Please charge in time.
 2. Please turn 'OFF' when you're going to charge, put the device into charger (Figure 1,2), close charger box.
- Please make sure device put into charger like Figure 2, devices placed outward.



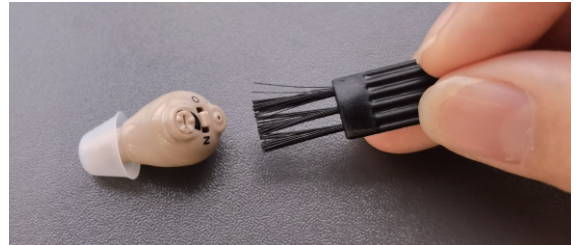
10/Charging The Hearing Device

3. Connect USB smaller side to the charger box (Figure 3), plug into power adapt and connect with 220V power outlet.
4. When plugged in, the charging box emits blue light. The Red Light indicates that it is charging (Fig. 4) and the green light indicates that it is fully charged (Fig. 5)



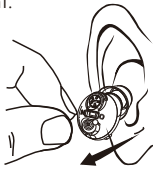
11/Cleaning Hearing Device

Get the cleaning brush from the accessory box. Remove the ear dome from your device. Use the cleaning brush to remove wax, dirt, or any debris from both the ear dome and the device itself. The ear dome may be run under warm water, but be sure the ear domes are completely dry before reattaching to your device.



12/Remove The Hearing Device

Hold hearing amplifier with your thumb and index finger and gently pull it out of the ear canal.



Note:

1. While removing the hearing amplifier, open and close the mouth and pull the auricle back with the other hand. This makes it easier to remove the hearing amplifier.
2. Wear and remove hearing amplifier need a lot of practice. Hearing amplifiers are very delicate items. Falling can cause damage to hearing amplifiers so it is best to wear and remove hearing amplifiers in a soft environment on the surface.

13/Important Note

1. Please don't use the hearing amplifier at a high volume for a long time. It will damage your hearing.
2. Please maintain the product all the time in order to avoid the ear plug and microphone opening being blocked by outer objects.
3. Please don't use when showering, swimming, raining or wet environment, please don't expose the hearing amplifier under sunshine get close to a stove or other heat sources.
4. Please protect the hearing amplifier carefully and avoid dropping it on the floor.
5. Please use the specified battery and charger exclusively developed for the hearing amplifier.
6. Do not disassemble or modify the hearing amplifier.
7. Keep the hearing amplifier away from the children.