

miniwell

INSTRUCTION MANUAL

Miniwell Portable Water Filter - L610

0.01
Micron



L610 B002008

PRODUCT EXPLODED VIEW



- ① Water Inlet ② Inlet Hose ③ Float ④ Prefilter
⑤ Handle ⑥ Handle Collar ⑦ O-ring ⑧ Housing
⑨ Carbon Fiber Filter ⑩ Ultrafiltration Filter
⑪ Water Outlet ⑫ Outlet Hose ⑬ Cup

L610 INCLUDES



PRODUCT SET-UP



NOTE:

Miniwell Portable Water Filter-L610 is intended for use with Fresh Water sources only. Do not use in salt water. Do not choose human and industrial wastewater as water source.

NORMAL OPERATION

1. Place prefilter into untreated water source. Use the float to keep prefilter off the bottom and away from sediment.
2. Put the water outlet hose into water container.
3. Start pumping by moving the handle up and down.

* When the filter is new, you may see tiny bubbles in the treated water. These are harmless.

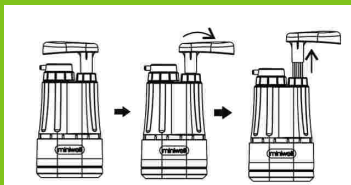
* No water flow through the outlet hose after approximately 20 pumping strokes or pump easily, please check

A: If inlet hose is kinked

B: If prefilter is submerged or dry.

C: If there is trapped air in housing. Unscrew the UF filter and carbon fiber filter. Start to pump. After filling housing with raw water, reassemble two filters into housing.

* If the pumping handle is hard to pull up, please rotate the handle several turns. It will be easy to operate.



4. After getting enough treated water, remove inlet hose and prefilter from water source. Allow remaining water flowing out from pump body by continuing pumping to drain from outlet.

5. Store the unit in the carry bag. To prevent the possibility of cross contamination, remove the outlet hose and store separately in the resealable bag inside.



TROUBLE SHOOTING

1. The water flow slows down, please check if prefilter is clogged. Please backwash pre-filter.

Note: To extend filter life, always use the best fresh water source you can access. If raw water is cloudy, wait for sediment to settle out until water appears clear and then filter the water above the sediment. If water flow is slow eventhough repeat backflushing a couple of times, please replace cartridges.

2. The raw water is spilled from the UF thread cap:
Reassemble the UF filter and Carbon fiber filter combination. Put these built-up filters in the housing. And then push it down firmly. Securely tighten UF thread cap to ensure a leak-proof seal.

CLEANING

Before storing the filter, we recommend to backwash prefilter.

1. Remove prefilter from inlet hose.
2. Place water inlet hose into clean water. Pump the water flowing through the L610 water filter until water runs out from outlet hose.



3. Connect the pre-filter to outlet hose. Pump the water flowing through pre-filter until water flow is clean from prefilter.



4. For more thorough cleaning, the UF filter can be cleaned by rinsing with medical mouthwash and then shaking the filter with the open end facing down to dislodge any particulate. **(NOTE: Carbon filter should only be rinsed with clean tap water.)**

MAINTENANCE

1. Disassemble L610 components. Use clean water to rinse components and allow them to soak in vinegar or medical mouthwash.
2. After cleaning, allow the parts to dry and then reassemble. Store the filter in a cool and dry location.

NOTE:The Carbon Filter fibers are enclosed in an ABS housing and cannot be removed. Do not use vinegar or medical mouthwash on the Carbon Filter.

FILTER REPLACING

1. Prefilter replacing:

Remove Pre-Filter from water inlet hose then reinstall new Prefilter.



2. Carbon filter and UF filter replacing:

2.1 Unscrew UF filter counter-clockwise and gently remove UF Filter /Carbon Filter assembly.



2.2 Gently rotate UF filter so that Lock Pins are aligned with openings of Lock Slots. Pull UF filter away from Carbon Filter. Replace new filter.



2.3 Put the carbon filter and UF built-up filter into housing and screw on tightly.



SPECIFICATION

Model	L610
Filter Pore Size	0.01 micron
Net Weight	320 g
Gross Weight	445 g
Size	165*50*80 mm
Package Size	190*100*85 mm
Capacity	1,000 L
Water flow	0.5L(0.13gal)/min
Material	ABS, Carbon fiber, Ultra Filter
Accessories	Inlet and Outlet Hose, Fabric Bag, Instruction
Optimum Temperature Range	0°C-100°C
Shelf Life	5 years(After Initial Wetting:3 years)

Manufacturer: Guangzhou Lanquan Household Electrical Appliance Co.,Ltd

Add: Room 101,No.16,Hongmian Road,Jinkeng Guangxing, Nancun Town,Panyu District,Guangzhou City.

Tel: 86-020-34827622

Email: info@miniwell.net

Website: www.miniwell.net