



Alcédo

GETTING STARTED

Smart Ear & Forehead Thermometer



Product Structure



- 1 Probe cover
- 2 Probe
- 3 LCD display
- 4 Power/ Measure
- 5 °F/°C switch
- 6 Mode(Adult/Child /Ear/Object)
- 7 Battery cover
- 8 Memory/Mute

Modes



Adult Forehead Mode



Child Forehead Mode



Adult Ear Mode



Child Ear Mode



Object Mode



Mode Button
Press to change mode

Forehead Mode

1. Choose or .
2. Point the thermometer probe to the center of the forehead, about “1-3cm” away from the skin surface.
3. Press and release button. The temperature will be displayed on the screen instantly.



Object Mode

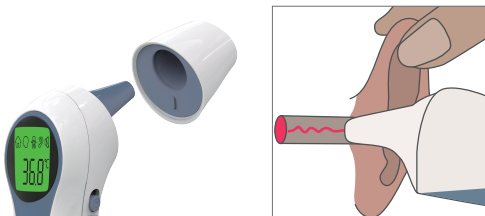
1. Choose .
2. Point the thermometer probe to the center of the object, about “1-3cm” away from the object surface.
3. Press and release button. The temperature will be displayed on the screen instantly.



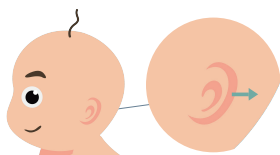
Ear Mode

Not recommended for infants under 3 months

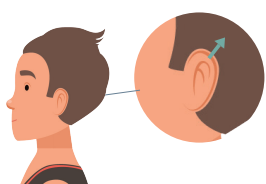
1. Choose or .
2. Remove probe cover (automatically switched to ear mode or).
3. Insert probe into ear canal



Note:
Children under 1 year:
Pull the ear straight back.



Children aged 1 year to adult:
Pull the ear up and back.



Readings in Memory

When the thermometer is ON, press the Memory Button.



The first reading 01 displayed followed by the measurement values.



To view a particular stored memory, press the Memory button to that stored reading



Features

Switch between °C and °F
Push the unit switch button to switch between °C and °F



Mute/Unmute

Press and hold the Mute button to switch between Mute and Unmute.



Notice

Operating environment

Make sure that both user and thermometer have stayed in same room for at least 30 minutes.

Keep sensor clean

Check and clean the lens regularly. If it's not clear, please clean it with a cotton swab with alcohol, wait 5-10 mins, you can use thermometer after alcohol evaporated completely.

Keep forehead/ear clean

Forehead mode: make sure there isn't any sweat, water or condensation on the skin. Ear mode: please remove earwax, keep the ear canal clean.

Notice

- *Do not move during measurement.
- *Do not hold the thermometer for long time as it's highly sensitive to heat.
- *Do not repeat use with no pause. If taking multiple readings, please wait at least 10 seconds between readings.

Extended Warranty

Go to www.AlcedoHealth.com/Warranty to register your product and receive one FREE extra year warranty.

Please read the instruction manual for complete product information.

Have questions?

DO NOT RETURN THIS PRODUCT.
Call our Toll-Free Consumer Help Line at 833-682-8655 for assistance with your Alcedo product.