

# RoHS TEST REPORT

Report No. : B-R190925806

Date: Sep. 29, 2019

Page 1 of 15

Applicant : Hebei Yu Wang Electrical Appliance Co., Ltd.

Address : Zhongtong Village, Mucun Town, Xinle City,  
Hebei Province, China

Client No : 03114335

Manufacturer : Hebei Yu Wang Electrical Appliance Co., Ltd.

Address : Zhongtong Village, Mucun Town, Xinle City,  
Hebei Province, China



## Report on the submitted sample said to be

Sample Name : Electric Blanket

Model No : ML-G01(153\*107cm), ML-G02(150\*80cm),  
ML-G03(153\*127cm), ML-G06(183\*127cm)

Sample model : ML-G06(183\*127cm)

Sample Received Date : Sep. 25, 2019

Complete Date : Sep. 29, 2019

Test Requested : As specified by client, to determine the Cadmium, Lead, Mercury, Hexavalent Chromium, PBBs / PBDEs, Bis-(2-ethylhexyl) Phthalate (DEHP), Diisobutyl phthalate(DIBP), Dibutyl Phthalate (DBP) & Benzylbutyl Phthalate (BBP) content in the submitted sample.

Test Result(s) : Conform to RoHS Directive 2011/65/EU Annex II amending Annex (EU)2015/863 and amending Annex (EU)2017/2102.



Company No. 07113834

\*\*\*\*\*FOR FURTHER DETAILS, PLEASE REFER TO THE FOLLOWING PAGE(S)\*\*\*\*\*

Written by:

*Chen Qin*

(Chen Qin)

Inspected by:

*Austin Zhong*

(Austin Zhong)

Approved by:

*Martin Wong*



This report is considered invalidated without the Special Seal for Inspection of the Beide (Shenzhen) Product Service Limited, This report shall not be altered, increased or deleted. The results shown in this test report refer only to the sample(s) tested. Without written approval of Beide (Shenzhen) Product Service Limited, this test report shall not be copied except in full and published as advertisement.

# RoHS TEST REPORT

Report No. : B-R190925806

Date: Sep. 29, 2019

Page 2 of 15

Test Method: With reference to IEC 62321-4:2013:A1:2017, IEC 62321-5:2013, IEC 62321-7-2:2017, IEC 62321-6:2015

- (1) Determination of Cadmium by ICP-OES.
- (2) Determination of Lead by ICP-OES.
- (3) Determination of Mercury by ICP-OES.
- (4) Determination of Hexavalent Chromium by Colorimetric Method using UV-Vis.
- (5) Determination of PBBs / PBDEs content by GC-MS.
- (6) Determination of phthalates by GC-MS.

Test Result(s):

Test item	Unit	Limit	Result			
			PCB	White wire	White connectors	White Shell
Cadmium (Cd).	mg/kg	100	N.D.	4.1285	N.D.	N.D.
Lead (Pb).	mg/kg	1000	N.D.	7.0523	N.D.	N.D.
Mercury (Hg).	mg/kg	1000	N.D.	3.2076	N.D.	2.5483
Hexavalent Chromium (Cr VI).	mg/kg	1000	N.D.	N.D.	N.D.	N.D.
Polybrominated Biphenyls (PBBs)	mg/kg	1000	N.D.	N.D.	N.D.	N.D.
Monobromobiphenyl	mg/kg	/	N.D.	N.D.	N.D.	N.D.
Dibromobiphenyl	mg/kg	/	N.D.	N.D.	N.D.	N.D.
Tribromobiphenyl	mg/kg	/	N.D.	N.D.	N.D.	N.D.
Tetrabromobiphenyl	mg/kg	/	N.D.	N.D.	N.D.	N.D.
Pentabromobiphenyl	mg/kg	/	N.D.	N.D.	N.D.	N.D.
Hexabromobiphenyl	mg/kg	/	N.D.	N.D.	N.D.	N.D.
Heptabromobiphenyl	mg/kg	/	N.D.	N.D.	N.D.	N.D.
Octabromobiphenyl	mg/kg	/	N.D.	N.D.	N.D.	N.D.

**This report is considered invalidated without the Special Seal for Inspection of the Beide (Shenzhen) Product Service Limited, This report shall not be altered, increased or deleted. The results shown in this test report refer only to the sample(s) tested. Without written approval of Beide (Shenzhen) Product Service Limited, this test report shall not be copied except in full and published as advertisement.**

# RoHS TEST REPORT

Report No. : B-R190925806

Date: Sep. 29, 2019

Page 3 of 15

Test item	Unit	Limit	Result			
			PCB	White wire	White connectors	White Shell
Nonabromobiphenyl	mg/kg	/	N.D.	N.D.	N.D.	N.D.
Decabromobiphenyl	mg/kg	/	N.D.	N.D.	N.D.	N.D.
Polybrominated Diphenyl Ethers (PBDEs)	mg/kg	1000	N.D.	N.D.	N.D.	N.D.
Monobromodiphenyl Ether	mg/kg	/	N.D.	N.D.	N.D.	N.D.
Dibromodiphenyl Ether	mg/kg	/	N.D.	N.D.	N.D.	N.D.
Tribromodiphenyl Ether	mg/kg	/	N.D.	N.D.	N.D.	N.D.
Tetrabromodiphenyl Ether	mg/kg	/	N.D.	N.D.	N.D.	N.D.
Pentabromodiphenyl Ether	mg/kg	/	N.D.	N.D.	N.D.	N.D.
Hexabromodiphenyl Ether	mg/kg	/	N.D.	N.D.	N.D.	N.D.
Heptabromodiphenyl Ether	mg/kg	/	N.D.	N.D.	N.D.	N.D.
Octabromodiphenyl Ether	mg/kg	/	N.D.	N.D.	N.D.	N.D.
Nonabromodiphenyl Ether	mg/kg	/	N.D.	N.D.	N.D.	N.D.
Decabromodiphenyl Ether	mg/kg	/	N.D.	N.D.	N.D.	N.D.
Diisobutyl phthalate(DIBP)	mg/kg	1000	N/A	N.D.	N.D.	N.D.
Dibutyl Phthalate (DBP)	%(w/w)	1000	N/A	N.D.	N.D.	N.D.
Benzylbutyl Phthalate (BBP)	%(w/w)	1000	N/A	N.D.	N.D.	N.D.
Bis-(2-ethylhexyl) Phthalate (DEHP)	%(w/w)	1000	N/A	N.D.	N.D.	N.D.

**This report is considered invalidated without the Special Seal for Inspection of the Beide (Shenzhen) Product Service Limited, This report shall not be altered, increased or deleted. The results shown in this test report refer only to the sample(s) tested. Without written approval of Beide (Shenzhen) Product Service Limited, this test report shall not be copied except in full and published as advertisement.**



# RoHS TEST REPORT

Report No. : B-R190925806

Date: Sep. 29, 2019

Page 4 of 15

Test item	Unit	Limit	Result			
			Screw	Conductor	Solder	Selector switch
Cadmium (Cd).	mg/kg	100	N.D.	N.D.	N.D.	N.D.
Lead (Pb).	mg/kg	1000	N.D.	N.D.	N.D.	N.D.
Mercury (Hg).	mg/kg	1000	N.D.	N.D.	N.D.	N.D.
Hexavalent Chromium (Cr VI).	mg/kg	1000	N.D.	N.D.	N.D.	N.D.
Polybrominated Biphenyls (PBBs)	mg/kg	1000	N.D.	N.D.	N.D.	N.D.
Monobromobiphenyl	mg/kg	/	N.D.	N.D.	N.D.	N.D.
Dibromobiphenyl	mg/kg	/	N.D.	N.D.	N.D.	N.D.
Tribromobiphenyl	mg/kg	/	N.D.	N.D.	N.D.	N.D.
Tetrabromobiphenyl	mg/kg	/	N.D.	N.D.	N.D.	N.D.
Pentabromobiphenyl	mg/kg	/	N.D.	N.D.	N.D.	N.D.
Hexabromobiphenyl	mg/kg	/	N.D.	N.D.	N.D.	N.D.
Heptabromobiphenyl	mg/kg	/	N.D.	N.D.	N.D.	N.D.
Octabromobiphenyl	mg/kg	/	N.D.	N.D.	N.D.	N.D.
Nonabromobiphenyl	mg/kg	/	N.D.	N.D.	N.D.	N.D.
Decabromobiphenyl	mg/kg	/	N.D.	N.D.	N.D.	N.D.
Polybrominated Diphenyl Ethers (PBDEs)	mg/kg	1000	N.D.	N.D.	N.D.	N.D.
Monobromodiphenyl Ether	mg/kg	/	N.D.	N.D.	N.D.	N.D.

**This report is considered invalidated without the Special Seal for Inspection of the Beide (Shenzhen) Product Service Limited, This report shall not be altered, increased or deleted. The results shown in this test report refer only to the sample(s) tested. Without written approval of Beide (Shenzhen) Product Service Limited, this test report shall not be copied except in full and published as advertisement.**

# RoHS TEST REPORT

Report No. : B-R190925806

Date: Sep. 29, 2019

Page 5 of 15

Test item	Unit	Limit	Result			
			Screw	Conductor	Solder	Selector switch
Dibromodiphenyl Ether	mg/kg	/	N.D.	N.D.	N.D.	N.D.
Tribromodiphenyl Ether	mg/kg	/	N.D.	N.D.	N.D.	N.D.
Tetrabromodiphenyl Ether	mg/kg	/	N.D.	N.D.	N.D.	N.D.
Pentabromodiphenyl Ether	mg/kg	/	N.D.	N.D.	N.D.	N.D.
Hexabromodiphenyl Ether	mg/kg	/	N.D.	N.D.	N.D.	N.D.
Heptabromodiphenyl Ether	mg/kg	/	N.D.	N.D.	N.D.	N.D.
Octabromodiphenyl Ether	mg/kg	/	N.D.	N.D.	N.D.	N.D.
Nonabromodiphenyl Ether	mg/kg	/	N.D.	N.D.	N.D.	N.D.
Decabromodiphenyl Ether	mg/kg	/	N.D.	N.D.	N.D.	N.D.
Diisobutyl phthalate(DIBP)	mg/kg	1000	N/A	N.D	N/A	N.D.
Dibutyl Phthalate (DBP)	%(w/w)	1000	N/A	N.D	N/A	N.D.
Benzylbutyl Phthalate (BBP)	%(w/w)	1000	N/A	N.D	N/A	N.D.
Bis-(2-ethylhexyl) Phthalate (DEHP)	%(w/w)	1000	N/A	N.D	N/A	N.D.

**This report is considered invalidated without the Special Seal for Inspection of the Beide (Shenzhen) Product Service Limited, This report shall not be altered, increased or deleted. The results shown in this test report refer only to the sample(s) tested. Without written approval of Beide (Shenzhen) Product Service Limited, this test report shall not be copied except in full and published as advertisement.**

# RoHS TEST REPORT

Report No. : B-R190925806

Date: Sep. 29, 2019

Page 6 of 15

Test item	Unit	Limit	Result			
			Metal parts	Blue shell	Screw	Pads
Cadmium (Cd).	mg/kg	100	N.D.	2.4806.	N.D.	N.D.
Lead (Pb).	mg/kg	1000	531.6353	N.D.	N.D.	N.D.
Mercury (Hg).	mg/kg	1000	N.D.	3.1295	N.D.	N.D.
Hexavalent Chromium (Cr VI).	mg/kg	1000	N.D.	N.D.	N.D.	N.D.
Polybrominated Biphenyls (PBBs)	mg/kg	1000	N.D.	N.D.	N.D.	N.D.
Monobromobiphenyl	mg/kg	/	N.D.	N.D.	N.D.	N.D.
Dibromobiphenyl	mg/kg	/	N.D.	N.D.	N.D.	N.D.
Tribromobiphenyl	mg/kg	/	N.D.	N.D.	N.D.	N.D.
Tetrabromobiphenyl	mg/kg	/	N.D.	N.D.	N.D.	N.D.
Pentabromobiphenyl	mg/kg	/	N.D.	N.D.	N.D.	N.D.
Hexabromobiphenyl	mg/kg	/	N.D.	N.D.	N.D.	N.D.
Heptabromobiphenyl	mg/kg	/	N.D.	N.D.	N.D.	N.D.
Octabromobiphenyl	mg/kg	/	N.D.	N.D.	N.D.	N.D.
Nonabromobiphenyl	mg/kg	/	N.D.	N.D.	N.D.	N.D.
Decabromobiphenyl	mg/kg	/	N.D.	N.D.	N.D.	N.D.
Polybrominated Diphenyl Ethers (PBDEs)	mg/kg	1000	N.D.	N.D.	N.D.	N.D.
Monobromodiphenyl Ether	mg/kg	/	N.D.	N.D.	N.D.	N.D.

**This report is considered invalidated without the Special Seal for Inspection of the Beide (Shenzhen) Product Service Limited, This report shall not be altered, increased or deleted. The results shown in this test report refer only to the sample(s) tested. Without written approval of Beide (Shenzhen) Product Service Limited, this test report shall not be copied except in full and published as advertisement.**



# RoHS TEST REPORT

Report No. : B-R190925806

Date: Sep. 29, 2019

Page 7 of 15

Test item	Unit	Limit	Result			
			Metal parts	Blue shell	Screw	Pads
Dibromodiphenyl Ether	mg/kg	/	N.D.	N.D.	N.D.	N.D.
Tribromodiphenyl Ether	mg/kg	/	N.D.	N.D.	N.D.	N.D.
Tetrabromodiphenyl Ether	mg/kg	/	N.D.	N.D.	N.D.	N.D.
Pentabromodiphenyl Ether	mg/kg	/	N.D.	N.D.	N.D.	N.D.
Hexabromodiphenyl Ether	mg/kg	/	N.D.	N.D.	N.D.	N.D.
Heptabromodiphenyl Ether	mg/kg	/	N.D.	N.D.	N.D.	N.D.
Octabromodiphenyl Ether	mg/kg	/	N.D.	N.D.	N.D.	N.D.
Nonabromodiphenyl Ether	mg/kg	/	N.D.	N.D.	N.D.	N.D.
Decabromodiphenyl Ether	mg/kg	/	N.D.	N.D.	N.D.	N.D.
Diisobutyl phthalate(DIBP)	mg/kg	1000	N/A	N.D.	N/A	N.D.
Dibutyl Phthalate (DBP)	%(w/w)	1000	N/A	N.D.	N/A	N.D.
Benzylbutyl Phthalate (BBP)	%(w/w)	1000	N/A	N.D.	N/A	N.D.
Bis-(2-ethylhexyl) Phthalate (DEHP)	%(w/w)	1000	N/A	N.D.	N/A	N.D.

This report is considered invalidated without the Special Seal for Inspection of the Beide (Shenzhen) Product Service Limited, This report shall not be altered, increased or deleted. The results shown in this test report refer only to the sample(s) tested. Without written approval of Beide (Shenzhen) Product Service Limited, this test report shall not be copied except in full and published as advertisement.

# RoHS TEST REPORT

Report No. : B-R190925806

Date: Sep. 29, 2019

Page 8 of 15

Test item	Unit	Limit	Result
			Thin wire
Cadmium (Cd).	mg/kg	100	N.D.
Lead (Pb).	mg/kg	1000	N.D.
Mercury (Hg).	mg/kg	1000	N.D.
Hexavalent Chromium (Cr VI).	mg/kg	1000	N.D.
Polybrominated Biphenyls (PBBs)	mg/kg	1000	N.D.
Monobromobiphenyl	mg/kg	/	N.D.
Dibromobiphenyl	mg/kg	/	N.D.
Tribromobiphenyl	mg/kg	/	N.D.
Tetrabromobiphenyl	mg/kg	/	N.D.
Pentabromobiphenyl	mg/kg	/	N.D.
Hexabromobiphenyl	mg/kg	/	N.D.
Heptabromobiphenyl	mg/kg	/	N.D.
Octabromobiphenyl	mg/kg	/	N.D.
Nonabromobiphenyl	mg/kg	/	N.D.
Decabromobiphenyl	mg/kg	/	N.D.
Polybrominated Diphenyl Ethers (PBDEs)	mg/kg	1000	N.D.
Monobromodiphenyl Ether	mg/kg	/	N.D.

**This report is considered invalidated without the Special Seal for Inspection of the Beide (Shenzhen) Product Service Limited, This report shall not be altered, increased or deleted. The results shown in this test report refer only to the sample(s) tested. Without written approval of Beide (Shenzhen) Product Service Limited, this test report shall not be copied except in full and published as advertisement.**



# RoHS TEST REPORT

Report No. : B-R190925806

Date: Sep. 29, 2019

Page 9 of 15

Test item	Unit	Limit	Result
			Thin wire
Dibromodiphenyl Ether	mg/kg	/	N.D.
Tribromodiphenyl Ether	mg/kg	/	N.D.
Tetrabromodiphenyl Ether	mg/kg	/	N.D.
Pentabromodiphenyl Ether	mg/kg	/	N.D.
Hexabromodiphenyl Ether	mg/kg	/	N.D.
Heptabromodiphenyl Ether	mg/kg	/	N.D.
Octabromodiphenyl Ether	mg/kg	/	N.D.
Nonabromodiphenyl Ether	mg/kg	/	N.D.
Decabromodiphenyl Ether	mg/kg	/	N.D.
Diisobutyl phthalate(DIBP)	mg/kg	1000	N.D.
Dibutyl Phthalate (DBP)	%(w/w)	1000	N.D.
Benzylbutyl Phthalate (BBP)	%(w/w)	1000	N.D.
Bis-(2-ethylhexyl) Phthalate (DEHP)	%(w/w)	1000	N.D.

This report is considered invalidated without the Special Seal for Inspection of the Beide (Shenzhen) Product Service Limited, This report shall not be altered, increased or deleted. The results shown in this test report refer only to the sample(s) tested. Without written approval of Beide (Shenzhen) Product Service Limited, this test report shall not be copied except in full and published as advertisement.

# RoHS TEST REPORT

Report No. : B-R190925806

Date: Sep. 29, 2019

Page 10 of 15

**Note:**

1. mg/kg = milligram per kilogram = ppm
2. N.D. = Not Detected (<MDL)
3. N/A = Not Applicable
4. MDL = Method detection limit



**This report is considered invalidated without the Special Seal for Inspection of the Beide (Shenzhen) Product Service Limited, This report shall not be altered, increased or deleted. The results shown in this test report refer only to the sample(s) tested. Without written approval of Beide (Shenzhen) Product Service Limited, this test report shall not be copied except in full and published as advertisement.**

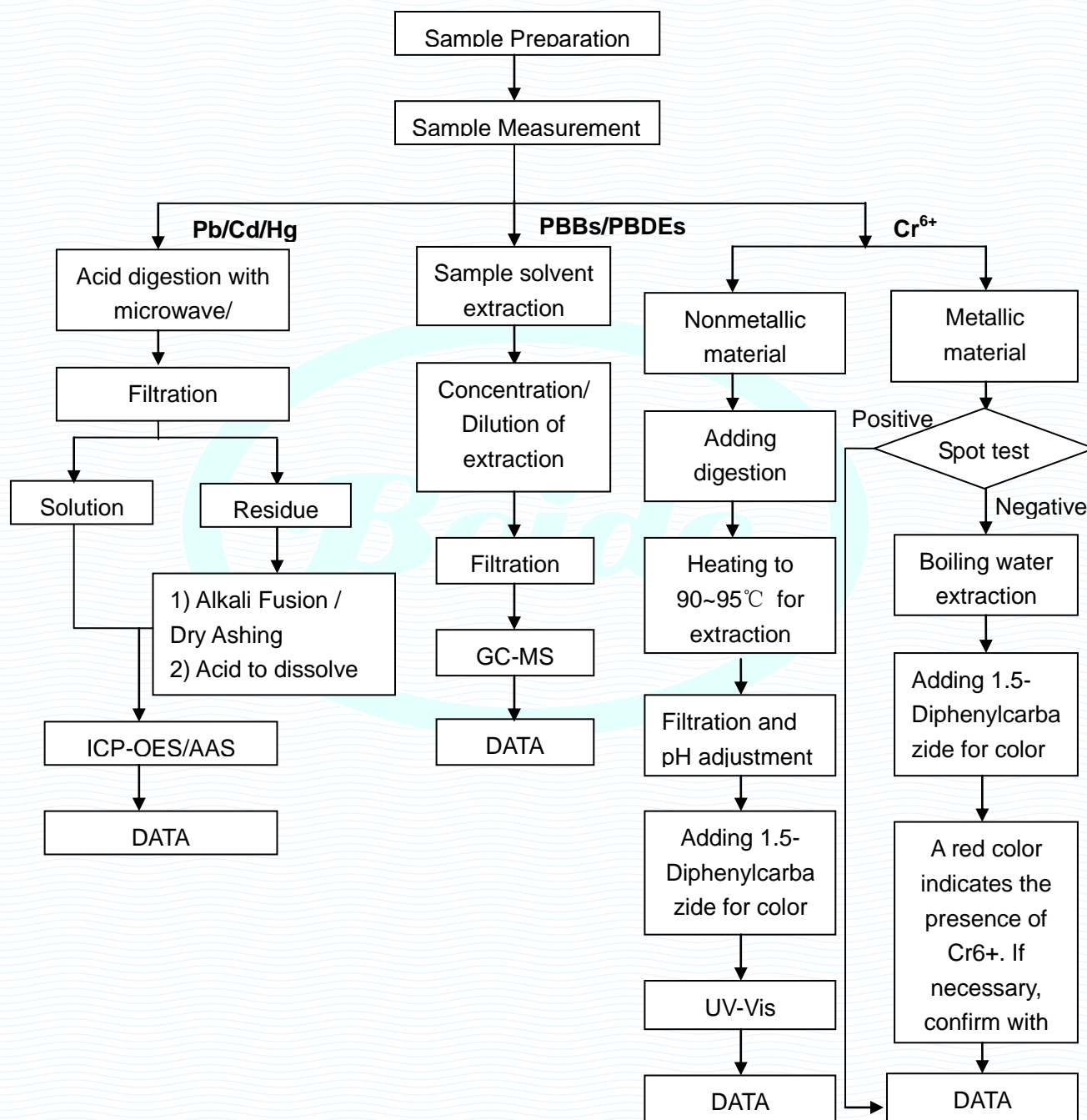
# RoHS TEST REPORT

Report No. : B-R190925806

Date: Sep. 29, 2019

Page 11 of 15

## RoHS Testing Flow Chart



This report is considered invalidated without the Special Seal for Inspection of the Beide (Shenzhen) Product Service Limited, This report shall not be altered, increased or deleted. The results shown in this test report refer only to the sample(s) tested. Without written approval of Beide (Shenzhen) Product Service Limited, this test report shall not be copied except in full and published as advertisement.



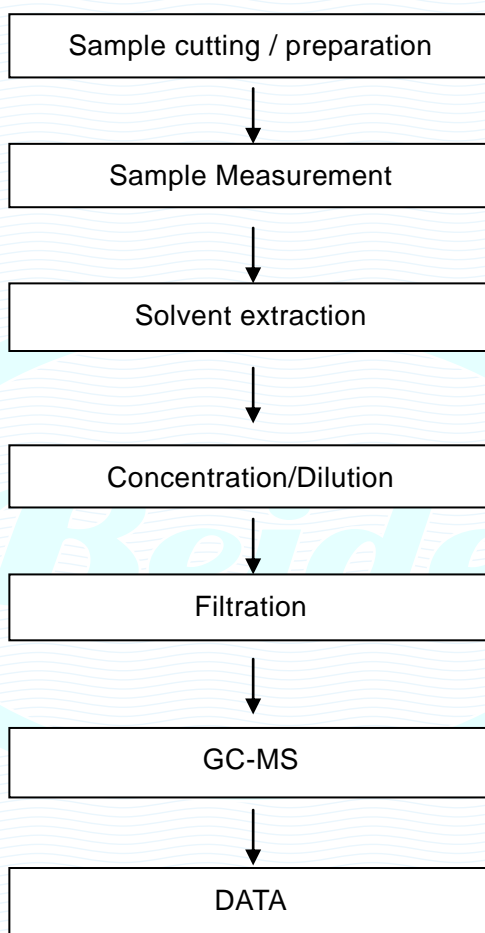
# RoHS TEST REPORT

Report No. : B-R190925806

Date: Sep. 29, 2019

Page 12 of 15

## Phthalates Testing Flow Chart



This report is considered invalidated without the Special Seal for Inspection of the Beide (Shenzhen) Product Service Limited, This report shall not be altered, increased or deleted. The results shown in this test report refer only to the sample(s) tested. Without written approval of Beide (Shenzhen) Product Service Limited, this test report shall not be copied except in full and published as advertisement.

# RoHS TEST REPORT

Report No. : B-R190925806

Date: Sep. 29, 2019

Page 13 of 15

## Photographs of Sample



This report is considered invalidated without the Special Seal for Inspection of the Beide (Shenzhen) Product Service Limited, This report shall not be altered, increased or deleted. The results shown in this test report refer only to the sample(s) tested. Without written approval of Beide (Shenzhen) Product Service Limited, this test report shall not be copied except in full and published as advertisement.

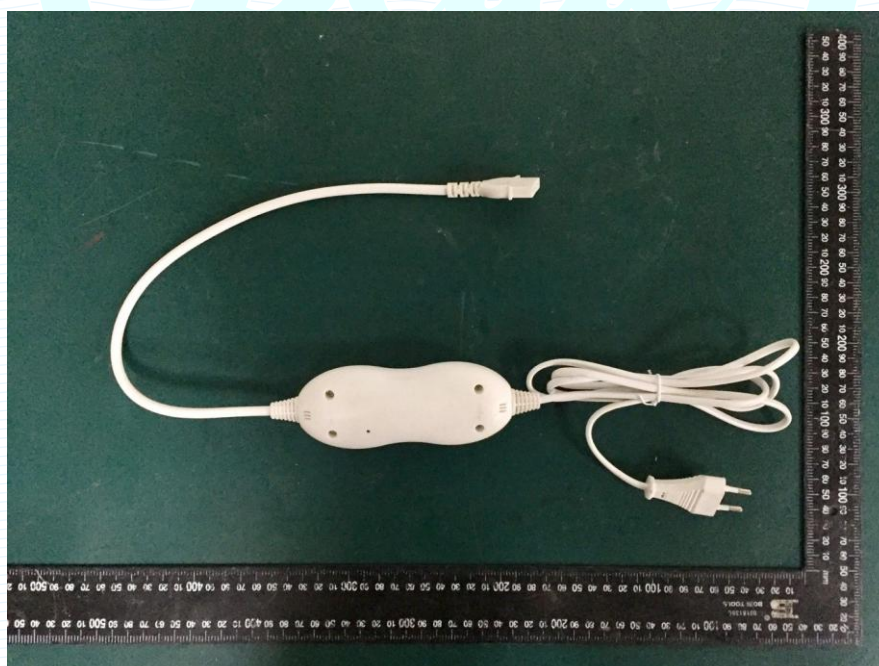
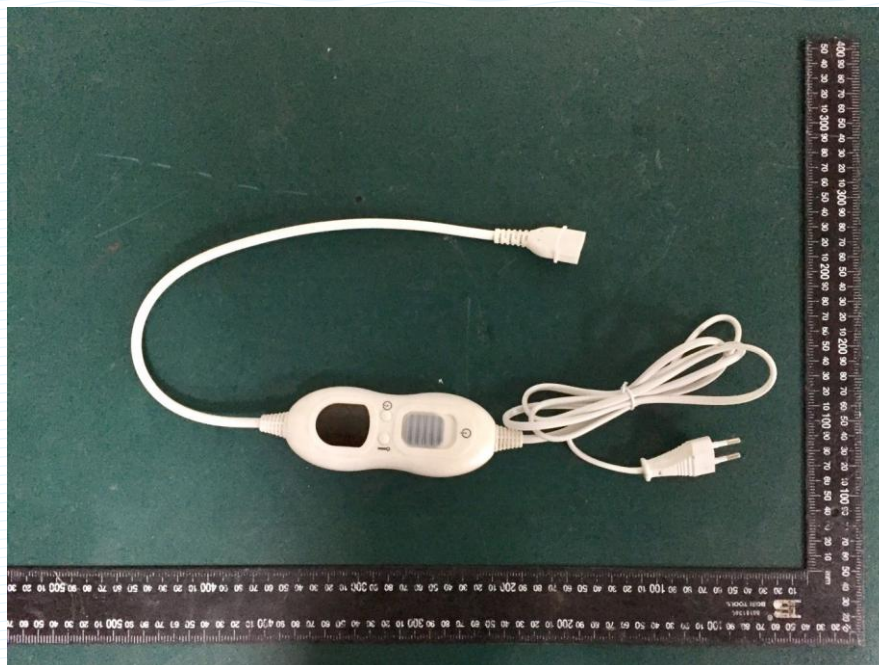


# RoHS TEST REPORT

Report No. : B-R190925806

Date: Sep. 29, 2019

Page 14 of 15



This report is considered invalidated without the Special Seal for Inspection of the Beide (Shenzhen) Product Service Limited, This report shall not be altered, increased or deleted. The results shown in this test report refer only to the sample(s) tested. Without written approval of Beide (Shenzhen) Product Service Limited, this test report shall not be copied except in full and published as advertisement.

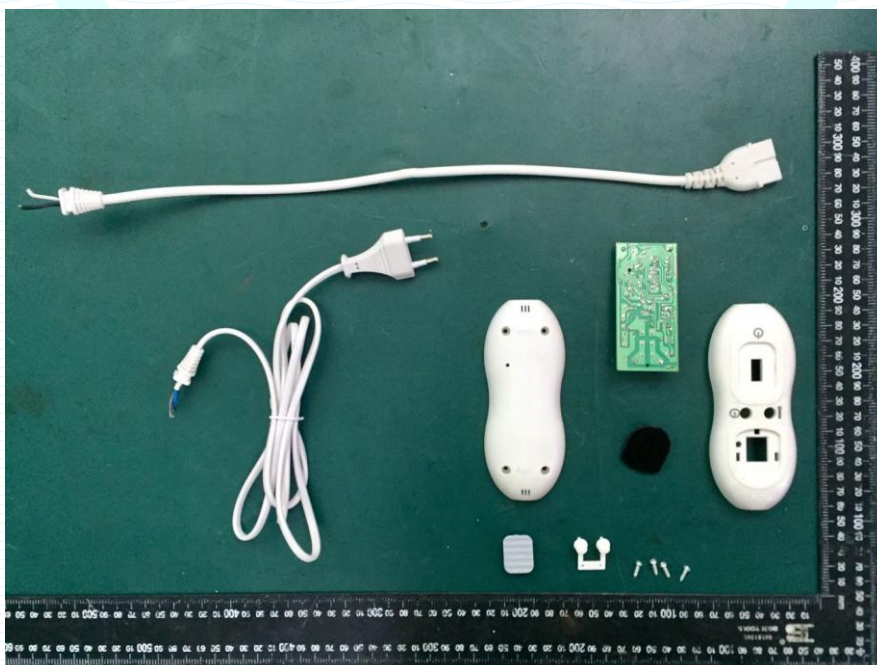
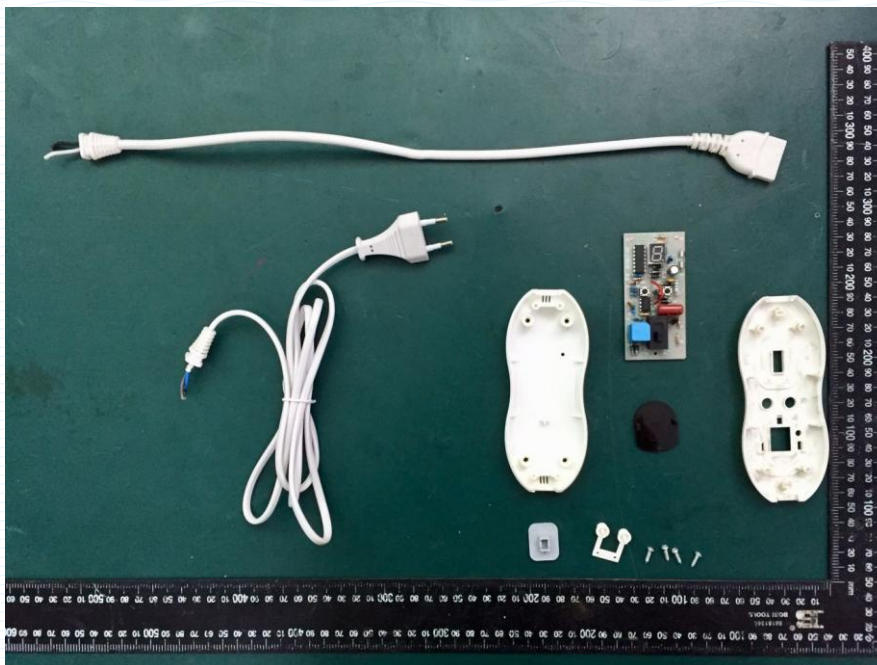


# RoHS TEST REPORT

Report No. : B-R190925806

Date: Sep. 29, 2019

Page 15 of 15



\*\*\*End of Report\*\*\*

This report is considered invalidated without the Special Seal for Inspection of the Beide (Shenzhen) Product Service Limited, This report shall not be altered, increased or deleted. The results shown in this test report refer only to the sample(s) tested. Without written approval of Beide (Shenzhen) Product Service Limited, this test report shall not be copied except in full and published as advertisement.