

insē

Please do not hesitate to contact us whenever you want,
we are always more than happy to help you !

✉ support@inselife.com 🌐 www.inselife.com



<https://bit.ly/inse-p20-support>
Troubleshooting, Installation and Usage videos,
Customer Support, etc.



insē

Pet Grooming Vacuum



SAFETY WARNING AND USE PRECAUTIONS

- This product is only for home use, not for commercial or industrial use, nor for outdoor or humid places;
- Never use this product alone for children or people with weak physical and thinking ability;
- Using this machine, please use it in an environment that can be used safely and under the instruction and supervision of the person who understands the safe use method and danger of the product. In the absence of such situation, please never let children use it;
- Please pay attention when using it near children and pets. In addition, please do not let children and pets play with this product;
- Please do not touch the power plug and the product with wet hands, do not absorb moisture from hair and liquid;
- Do not use this product when the power cord or power plug is damaged;
- Do not use the product when the power cord is damaged or when the product can not work normally. Or it is damaged, placed outdoors or immersed in liquid, please contact our company;
- Please do not disassemble the product, the wrong assembly method may cause electric shock or fire, please contact the company when maintenance is needed;
- Please do not inhale flammable or combustible liquids such as gasoline, in addition, please do not use in or near the environment with flammable and combustible gases;
- Do not pull the power cord, do not put heavy objects on the top of the machine, and do not clamp the wire to close the door;
- Do not smoke cigarette, match, hot ash and other things that are on fire, smoke or high temperature;
- Please do not put things into the opening or block the opening for use;
- Please pull out the power cord when you need to change the parts or proceed the maintain after you use several times.
- Please do not use or keep it in outdoor or bathroom or wet place;
- Please do not use products with fragrance and fragrance as filter. It is possible that the chemical may be one of the causes of fire.

USE PRECAUTIONS

- Please do not operate with wet hands or unplug the power cord.To avoid failure and electric shock, so please prohibit this absolutely.
- Please do not smoke and other highly flammable things.
- Do not use in the place where there is flammable or combustible liquid, and do not inhale highly flammable liquids and combustibles because of the possibility of fire and explosion.
- The first use may have peculiar smell, but it will not cause adverse effects on the body.
When using this product for the first time, it will smell, but it will disappear after a while. Please understand. However, if the scorching smell persists, please stop using immediately!
- Please keep the dust cup and filter clean for a long time, if the dust cup and filter are used under the condition of dirty, they may be the cause of failure, and unexpected accidents may occur.
- During maintenance, cut off the power supply and pull out the power line before proceeding.
If the power is turned on for maintenance, there will be electric shock, unexpected accident and injury.
- The product will stop working when the temperature rises abnormally , in case of abnormal heating of motor, please stop using immediately. If the suction opening is blocked, please stop using immediately. Take out the dust cup and clean the inlet and filter, then open it again after 60 minutes.
- Please be sure to install and use the filter, if you remove the filter, it will become one of the causes of failure.

CONTENTS

Package List	01
Product Overview	02
Product Technical Parameters	02
Operation Instructions	03-07
Accessory Combination	03
Ready to Use	03
Use of Different Accessories	04-08
Accessory and Power Mode	09
Maintenance	10
How to Clean Dust Cup	10
How to Clean Filters	11
How to Clean Electric Clipper	12
Power Cord Storage	12
Troubleshooting	13
Warranty	13

Package List



Main Machine*1



Flexible Hose*1



Crevice Tool*1



Grooming Brush*1



Cleaning Brush*1



Deshedding Brush*1



Electric Clipper*1



Guard Comb Set*1



Hood*1



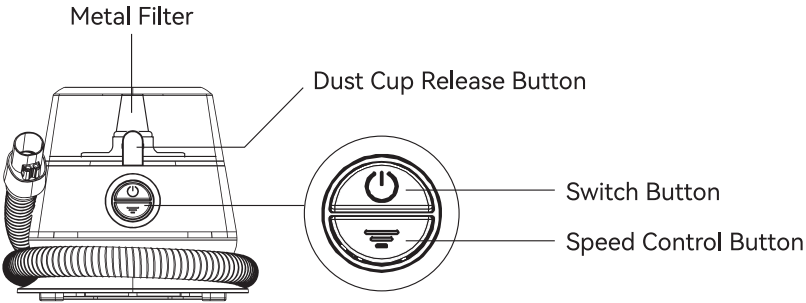
User Manual*1



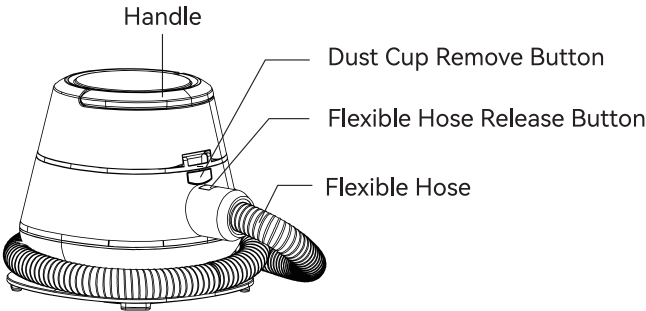
Quick Start Guide*1

Product Overview

Front View



Side View

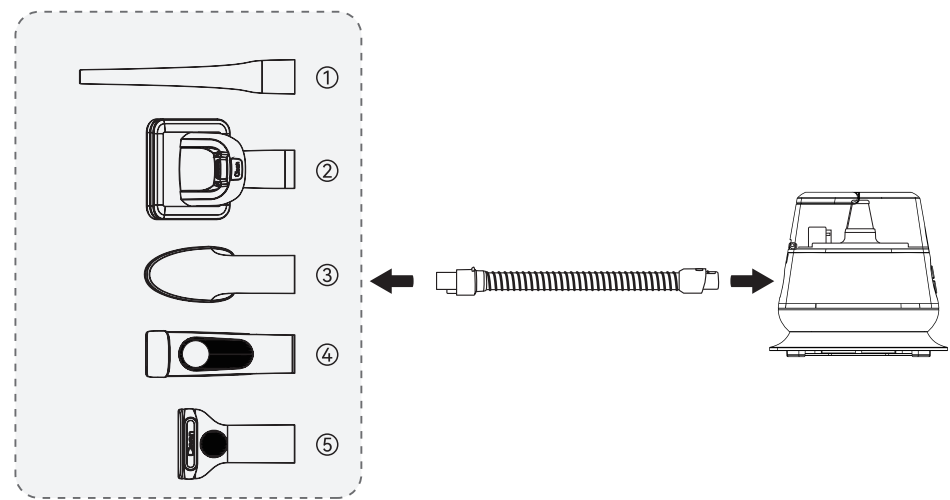


Product Technical Parameters

Product Name	Pet Grooming Vacuum
Product Model	P20
Product Net Weight	3.7 Kg
Voltage	AC120 V
Rated Power	350 W

Operation Instructions

1. Accessory Combination



2. Ready to Use

- ① Connect flexible hose and accessory you need.
- ② Insert plug to socket.
- ③ Turn on the switch.

NOTE

There are 3 Cleaning Modes: Eco Mode, Standard Mode, Max Mode.

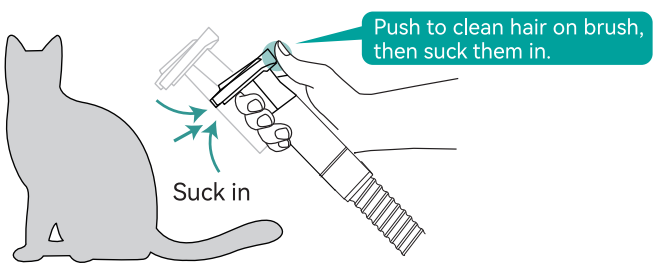
Suggest to start with the silence mode for the first use, and make your pet get used to it slowly, so as not to frighten your lovely pet.

3. Use of Different Accessories

Deshedding Brush:

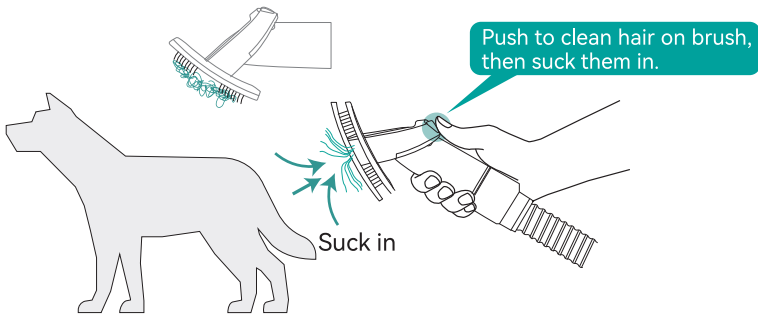
Used to deal with some long and unnecessary pet hair to have a better look.

- ※ Remember to pay attention to the cutting edge and sharp position, and do not use excessive force to cause skin scratches;
- ※ Operate according to the amount of pet hair to prevent clogging of the attachment suction port;



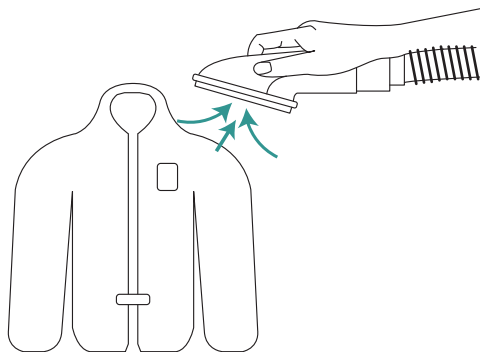
Grooming Brush:

Used to clean the floating pet hair, old hair and garbage in the pet's body, and has the effect to make the hair more fluffy.



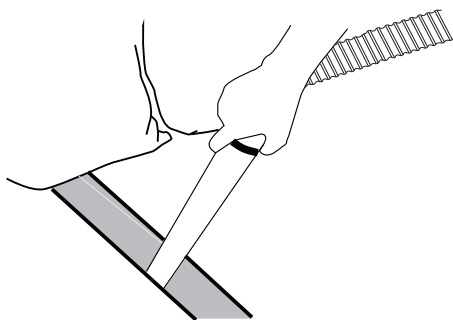
Cleaning Brush:

Used to clean lovely pets' hands or pet hair on cloth, sofa.



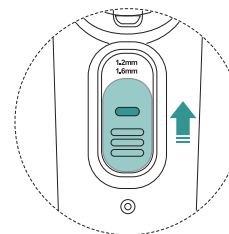
Crevice Tool:

Used to clean the hair on the sofa gap or the area hard to reach.



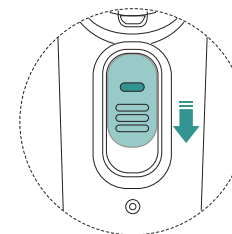
Electric Clipper:

Used to shave and inhale the pet's hair without residue, and the hair will not fly around.



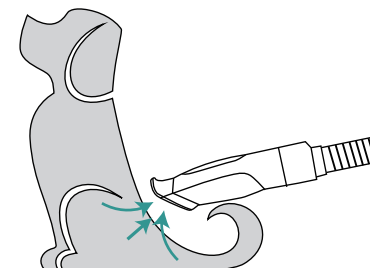
Turn on

Slide up (press and hold the green self-locking button)



Turn off

Slide down (press and hold the green self-locking button)



※ Remember to pay attention to the cutting edge and sharp position, and do not use excessive force to cause skin scratches;

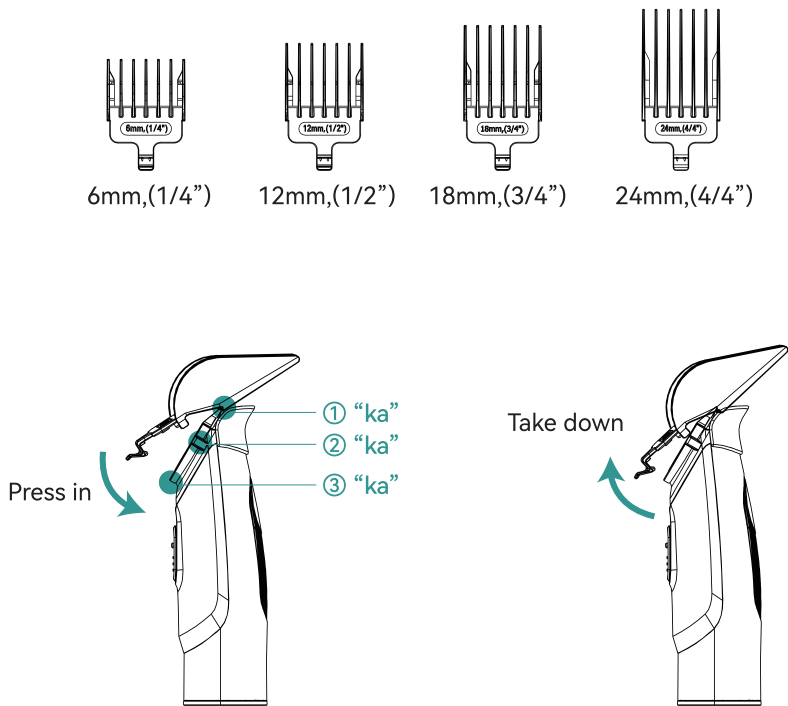
※ Animal electric clipper is for pruning purposes only;

Guard Comb (used with electric clipper):

Used for pet hair styling.

The adjustable clipping guard comb (6mm/12mm/18mm/24mm) is applicable for clipping hair of different lengths.

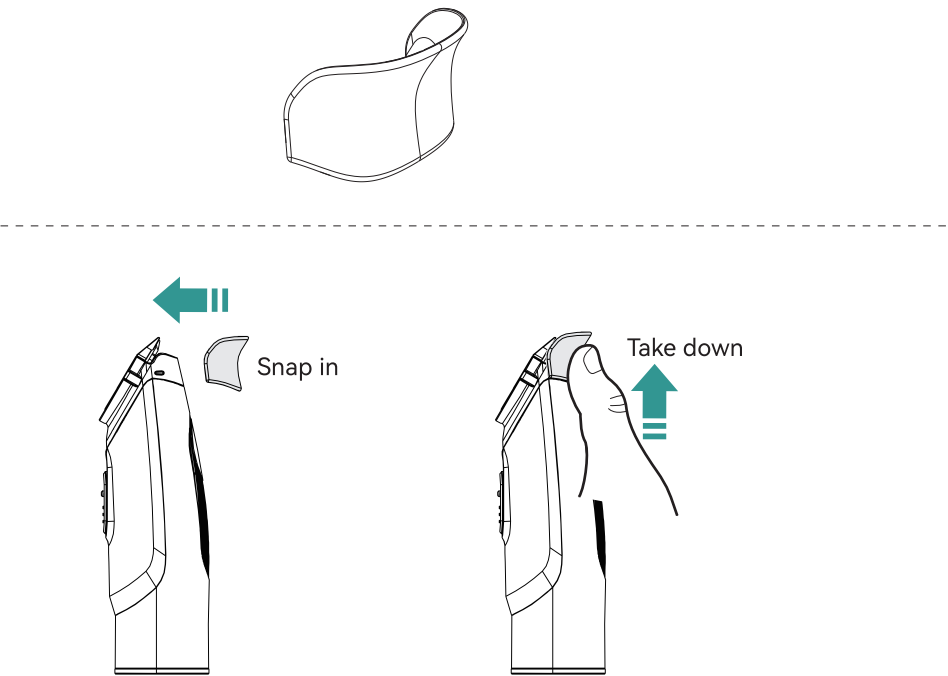
※ The guard comb set is small, please keep it properly when not in use to beware of loss;



Hood:

Used to enhance the suction of the tuyere when trimming hair, and also guide the suction path.






※ The hood is small, please keep it properly when not in use to beware of loss;



※ When a large amount of hair accumulates at the suction port, you can adjust the suction power to inhale the hair; or you need to pull out the hair then let go, it can be inhaled successfully;

Accessory and Power Mode

※ The following chart is for advice only, please choose accessories and modes according to your needs!

Accessory	Power Mode		
	Eco Mode	Standard Mode	Max Mode
	Clean the fallen hair in sofa, corner or other hard to reach areas	Clean the fallen hair in sofa, corner or other hard to reach areas	Deep cleaning of stubborn dust (A little noisy but recommended)
	Clean surface dust, make hair smooth	Airflow massage, make hair glossy (Recommended)	Deep cleaning, remove dead hair (A little noisy)
	Trim styling, handling hairstyle detail (Recommended)	With soft suction to trim and suck culled hair in	Don't recommend
	Soft suction power to clean the pet hair on clothes	Deep clean hair on your clothes	Strong suction power (A little noisy but recommended)
	Deshedding pet hair	With soft suction to deshedding pet hair	With powerful suction to deshedding pet hair (A little noisy)

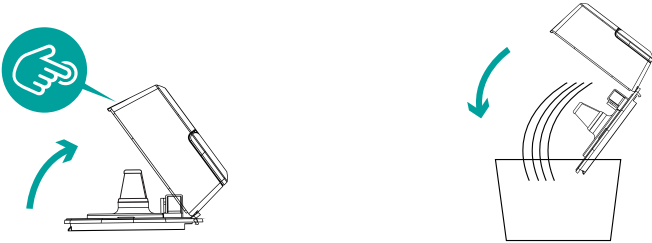
Maintenance

How to Clean Dust Cup

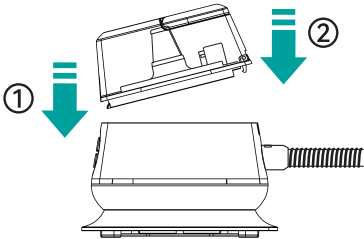
1. Press remove button, take off dust cup.



2. Press release button, pour hair out.



3. Assemble dust cup according to arrow direction.

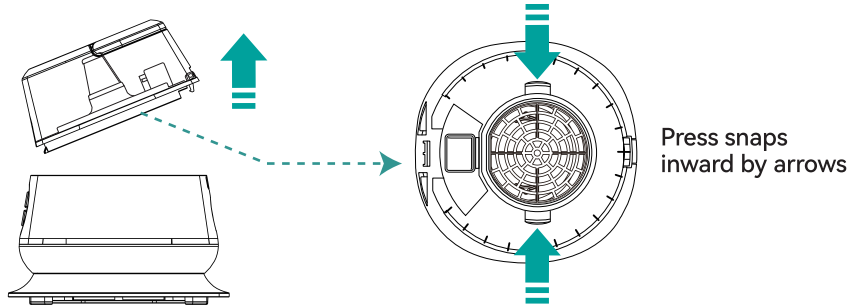


※ If the removed dust cup is cleaned with water or wet cloth, be sure to install it after the dust cup is completely dry. Otherwise, the motor will be damaged.

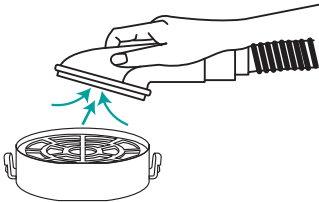
How to Clean Filters

Clean HEPA Filter

- 1. Remove dust cup, take out HEPA filter
- 2. Tap it or clean it with brush. Don't wash it with water.
- 3. Install HEPA filter back.

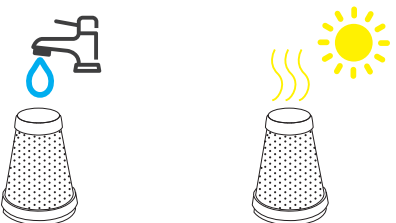


Clean HEPA filter with cleaning brush, do not wash it with water.



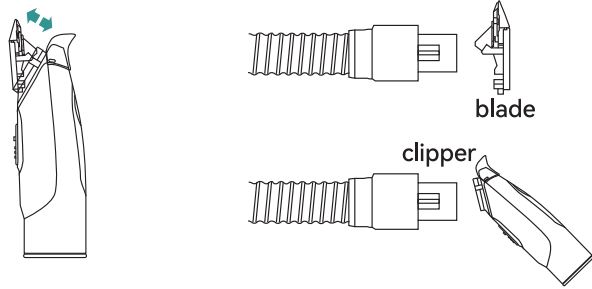
Clean Stainless Filter

Wash it with water, but make sure it is completely dry before installing it back.



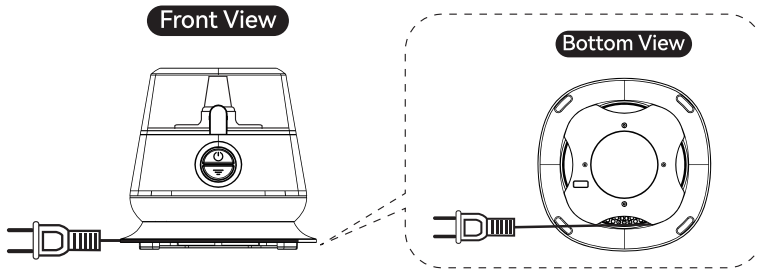
How to Clean Electric Clipper

- 1. Please retract the movable knife adjustment knob to the bottom before installing the knife.
- 2. Vacuum/clean debris from the blade and the Electric Clipper.



Power Cord Storage

Power cord is wound and stored at the bottom of the machine.



Troubleshooting

Problems	Possible Causes	Solutions
Cannot be powered on	Plug not been inserted well	Reinsert the plug
	Switch not been turned on	Press switch button to turn it on
Weak suction	Flexible hose clogged	Clean flexible hose and suction mouth
	Dust cup is too full	Empty dust cup
	Filter is dirty	Clean filter

If the above solutions cannot solve the problem, please stop using, and contact our customer support in time: support@inselife.com

Warranty

THIS WARRANTY TERM GIVES YOU SPECIFIC LEGAL RIGHTS, AND YOU MAY ALSO HAVE OTHER RIGHTS WHICH VARY FROM STATE TO STATE.

12-month Warranty & Lifetime Customer Support

Only apply to eligible purchases made directly from the INSE authorized distributors. Warranty coverage applies to the original owner and to the original product only and is not transferable.

How to Initiate a Warranty Claim

If your appliance operates improperly while in use under normal household conditions within the warranty period, please contact our customer support **[support@inselife.com]** or visit **www.inselife.com** to fill out the warranty form to initiate a warranty claim.

For more warranty details, please refer to **www.inselife.com**. All rights are reserved by INSE official website.