



Please do not hesitate to contact us whenever you want, we are always more than happy to help you!



support@inselife.com



www.inselife.com



(General tips, FAQ, etc.)



(Installation videos)



MADE IN CHINA



The Simpler | The Better

# Instruction Manual

Cordless Stick Vacuum Cleaner

Model number: N6 / N6S / N600 / N660 / N670 / N650

# CONTENTS

● Safety Warning .....	01-02
● Product Components .....	03
● Usage .....	04-07
● Troubleshooting .....	08
● Technical Specification .....	08
● Packing List .....	08
● WARRANTY ELUCIDATION .....	09

## IMPORTANT

**READ ALL INSTRUCTIONS BEFORE USE.**

**KEEP THIS INSTRUCTION FOR FUTURE REFERENCE.**

**WARNING:**

Basic safety precautions should always be observed when using an electrical vacuum, including the following to reduce the risk of fire, electrical shock, or injury.

Do not use in rain or leave outdoors whilst raining.

### Personal safety

1. Store indoors in a dry place out of the reach of children;
2. Always use responsibly. This vacuum can be used by children aged from 10 years and above and persons with reduced physical, sensory or mental capabilities or lack of experience and knowledge if they have been given supervision or instruction concerning use of the vacuum in a safe way and understand the hazards involved;
3. Don't let children play with the vacuum; supervise children using or maintaining the vacuum;
4. Take extra care when cleaning stairs to prevent falling;
5. Keep the vacuum and accessories away from hot surface;
6. Do not block the vacuums' openings or inside, keep openings free of any objects including dust, lint, clothing and fingers (and all parts of human body), etc;
7. Particularly keep hair away from openings and moving parts when using.

### Electrical safety

1. Only use batteries and chargers supplied by the official channels; misusing or using of any accessory or attachment from other channels, may present a risk of personal injury;
2. Never modify the charger in any way;
3. The charger has been designed for a specific voltage. Always check that the mains voltage is the same as that stated on the nameplate;
4. A charger that is suitable for one type of battery pack may create a risk of fire when used with other type of battery pack;
5. Before use, check the charger cord for signs of damage or ageing. A damaged or entangled charger cord increases the risk of fire and electric shock;
6. Do not abuse the charger cord; only use it on this product
7. Never carry the charger by the cord;
8. Do not pull the cord to disconnect from a socket. Please grasp the plug and pull to disconnect;
9. Don't wrap the power cord around the charger when storing;
10. Keep the charger and power cord away from hot surfaces and sharp edges;
11. The power cord cannot be replaced. If the cord is damaged, the charger should be discarded and replaced.
12. Do not handle the charger or the vacuum with wet hands;
13. Do not store or charge the vacuum outdoors;
14. The charger must be removed from the socket before removing the battery, cleaning or maintaining the vacuum.

## Battery safety

1. This vacuum includes Li-ion batteries. Do not incinerate or expose the batteries to high temperatures, as they may explode;
2. Leakage ejected from the battery may cause irritation or burns;
3. In an emergency situation contact professional help immediately;
4. Leaks from the battery cells can occur under extreme conditions. Do not touch the leakage. If the leakage gets onto the skin, wash it immediately with soap and water. If the leakage gets into the eyes, flush them immediately with clean water for a minimum of 10 minutes and seek medical attention. Please Wear gloves to dispose of the battery in accordance with local regulations;
5. Never disassemble or abuse the battery; any short circuit may cause burns or fire;
6. When the battery pack is not in use, keep it away from paper clips, coins, keys, nails, screws or other small metal objects that could make a connection from one terminal to another one.
7. When you dispose of the vacuum, remove the battery and dispose of the battery safely in accordance with local regulations.

## Product safety

1. Before using the vacuum and after any impact, check for signs of wear or damage;
2. Do not use the vacuum if any part is damaged or defective;
3. Repairs should be carried out by a suitably qualified person in accordance with relevant safety regulations. Repairs by unqualified persons could be dangerous;
4. Never modify the vacuum in any way as this may increase the risk of personal injury;
5. Only use replacement parts or accessories provided or recommended by the official channels.

## Intended use

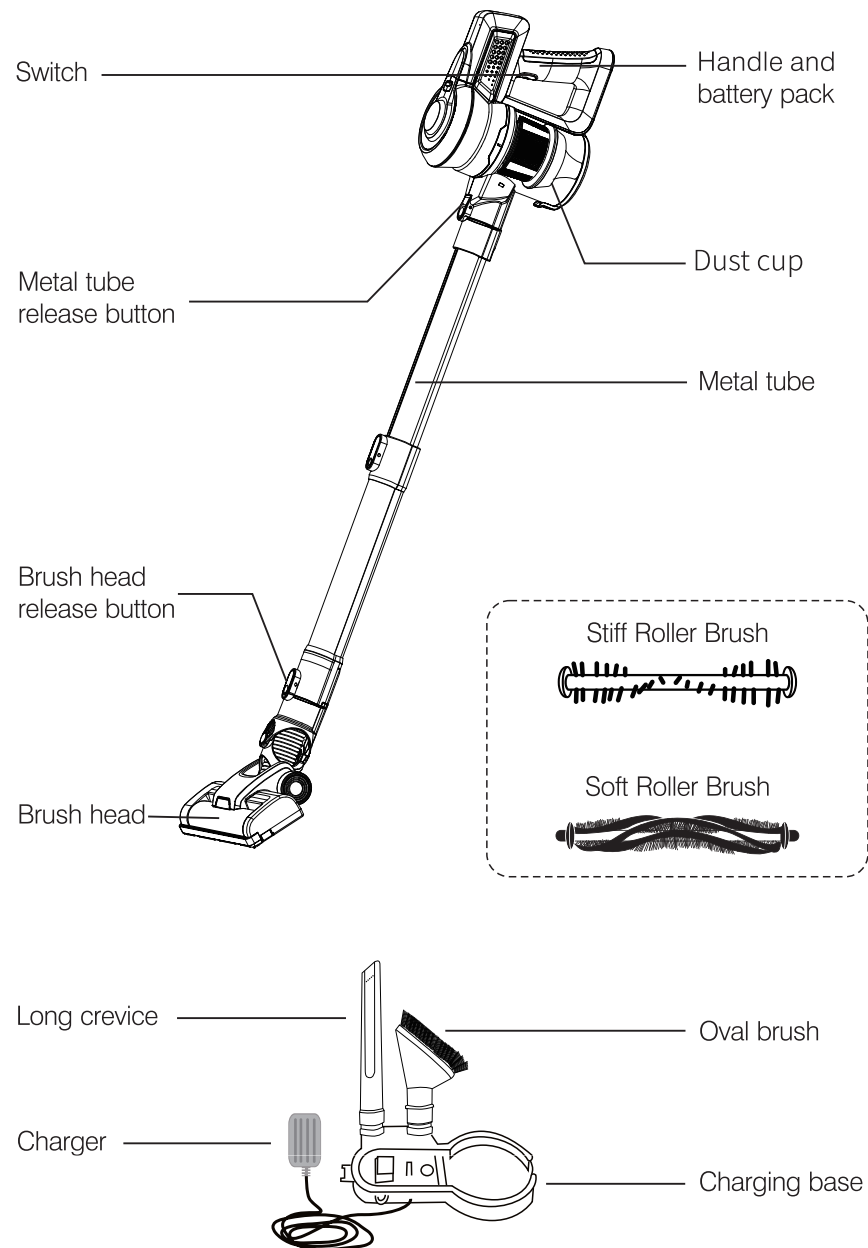
1. This vacuum has been designed for domestic dry vacuum cleaning only;
2. Do not pick up liquids or use on wet surfaces;
3. Do not pick up anything that is flammable, burning or smoking;
4. Use only as described in this manual; for latest manual, please refer to [www.inselife.com](http://www.inselife.com);
5. Don't use on rough surfaces such as concrete or tarmacadam, etc.

### ⚠ WARNING:

1. This vacuum is not waterproof. Be careful when wipe clean with a wet cloth. Do not use solvents or polishes to clean its surface;
2. Never immerse the unit in water and do not clean in a dish washer.

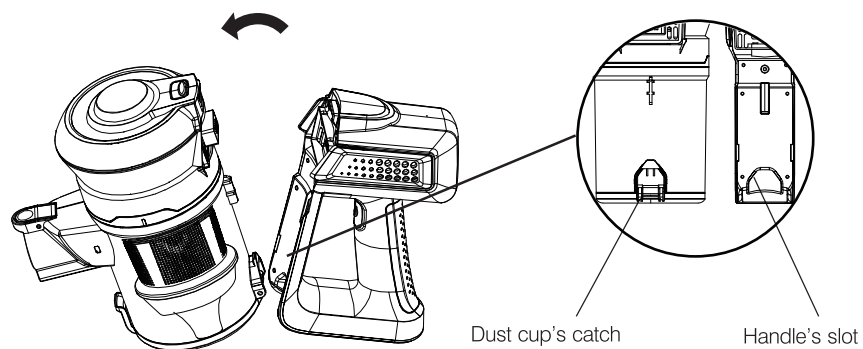
*\*Regularly replace the HEPA filter to prevent the suction decline from affecting machine cleaning performance.*

## Introduction of components

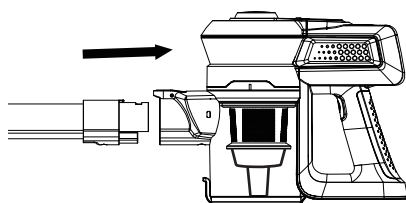


## Usagae

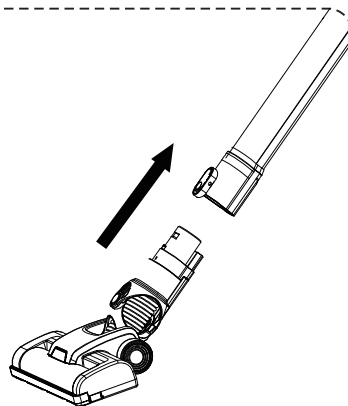
### I How to use as the stick vacuum cleaner



a) Make sure the handle's slot match the dust cup's catch rightly as below, then connect the battery pack (handle) with the dust cup until hear a click



b) Attach the metal tube to the main motor until hear a click



c) Attach the brush head to the bottom of the metal tube

d) Press the switch to work

A. Lower power

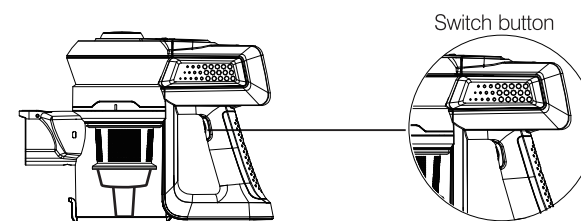
It's lower power when your press the switch button for the first time

B. Higher power

It's higher power when you press the switch button for the second time

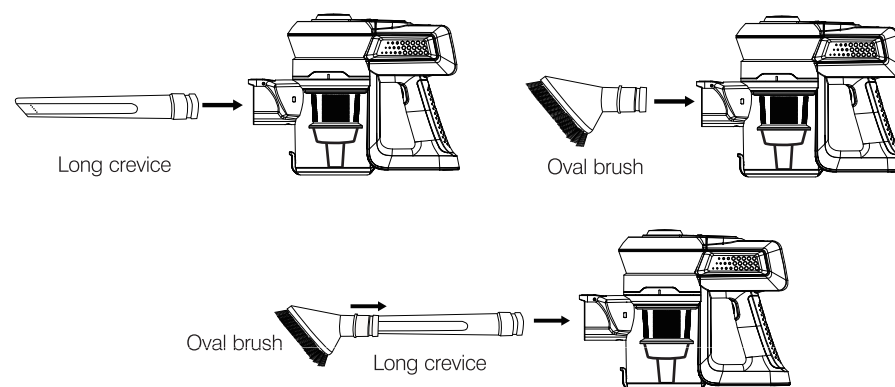
It will be power off when you press the switch button for the third time

Two level speed control



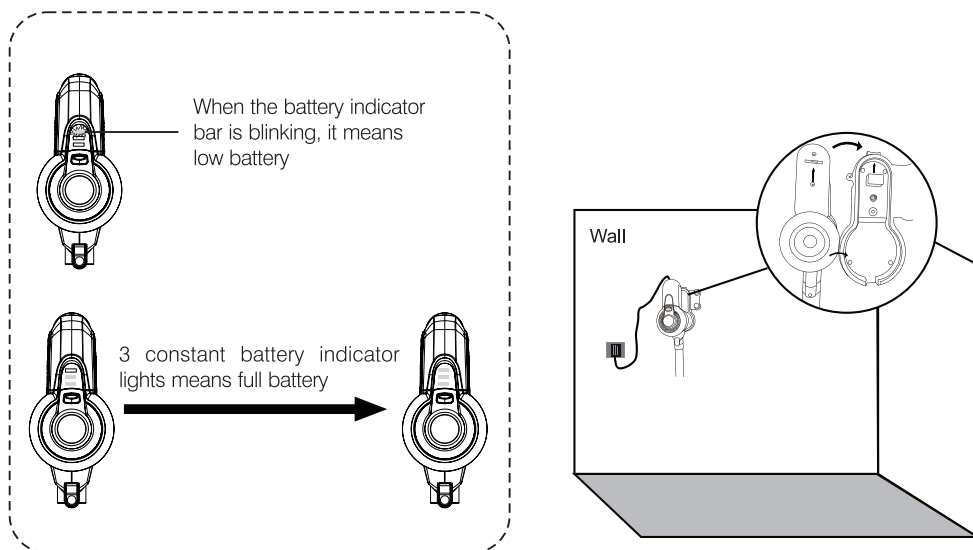
### II How to use as portable hand vacuum

Insert the accessory to the main motor as below showed

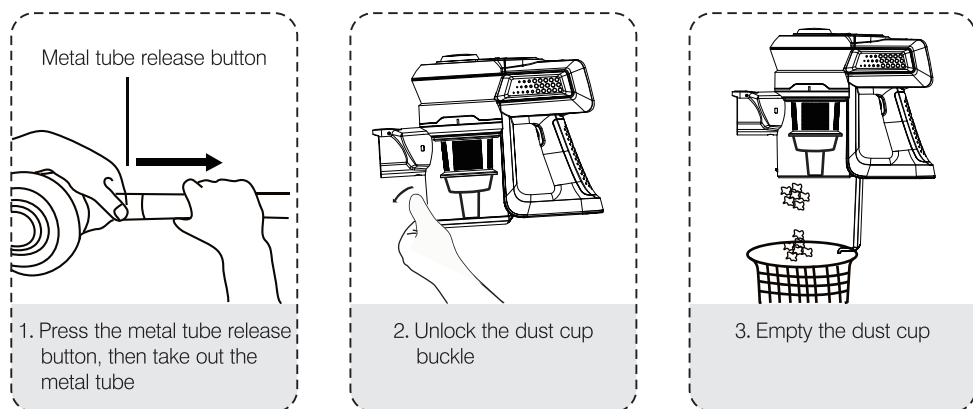


### III Battery charging

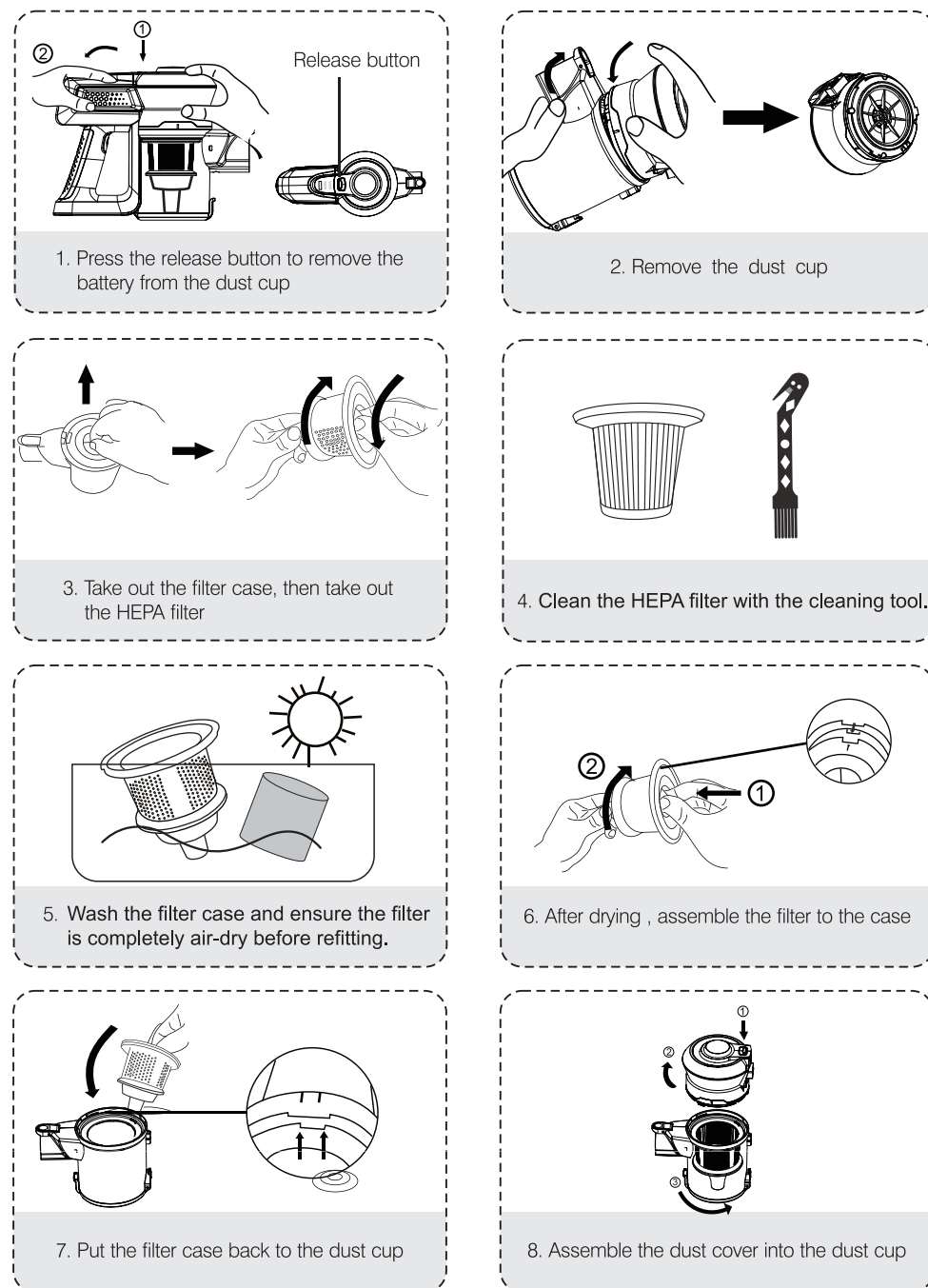
When low battery, please switch off and then put back to charging base for charging.



### How to empty the dust cup



### How to maintain the HEPA filter



## Troubleshooting

### Weak suction or no suction

1. Empty the dust
2. Check dust cup is correctly installed
3. Check the HEPA filter is correctly installed
4. Clean the HEPA filter

### Stop working or won't work

1. Charge battery
2. Clear debris/hair from roller brush with the 2 in 1 cleaner tool

### Battery will not charge

1. Check connection between the main motor and charging base
2. Check connection between the charger and wall socket

### Inse customer care

1. Refer to the FAQ on [www.inselife.com](http://www.inselife.com)
2. Any questions and need any help, please Contact our INSE Channel.  
We always offer return and replacement service under warranty if the vacuum is defective.  
Most questions can be solved by our trained INSE Customer Support Team members.  
INSE CONTACT DETAILS  
Email: [support@inselife.com](mailto:support@inselife.com)

## Technical specification

Battery	22.2V/2200mA	Charging time	4 hours
Battery charger output	26.5V/500mA	Net weight	2.0kg
Power	160W	Airflow	15dm³/s

## Packing list

Item name	Quantity	Item name	Quantity
Retractable Metal Tube	1	Main Motor (Dust Cup with Motor)	1
Brush Head	1	Handle with Battery	1
Long Crevice	1	Oval Brush for Fabric Surface	1
Charging Base with Charger	1	HEPA Filters	1
Stiff Roller Brush	1	Soft Roller Brush	1
2 in 1 Cleaner Tool (Small Cutter and Small Brush)	1	Instruction Manual	1
Quick Start Guide	1	/	/

## WARRANTY ELUCIDATION

**NOTE: THIS WARRANTY TERM GIVES YOU SPECIFIC LEGAL RIGHTS, AND YOU MAY ALSO HAVE OTHER RIGHTS WHICH VARY FROM STATE TO STATE.**

Only apply to eligible purchases made directly from the INSE authorized distributors. Warranty coverage applies to the original owner and to the original product only and is not transferable

### ① 12-month Warranty & Lifetime Customer Support

According to the prescription, the period for protecting to fix our company's Vacuum cleaner is one year. (From the day when you ordered).

During this period, any belongs to under normal usage circumstance cause because of the product quality's problem of breakdown, our company will be responsible for giving free replacement parts.

### ② How to initiate a warranty claim

If your appliance operates improperly while in use under normal household conditions within the warranty period, please contact our customer support [[support@inselife.com](mailto:support@inselife.com)] or visit [www.inselife.com](http://www.inselife.com) to fill out the warranty form to initiate a warranty claim.

For more warranty details, please refer to [www.inselife.com](http://www.inselife.com). All rights are reserved by INSE official website