

SUPRENT
Haircare, We Care

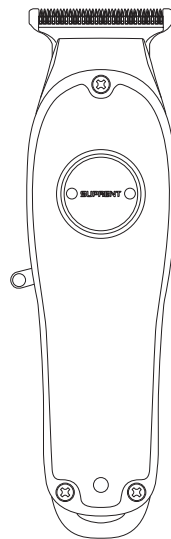
This manual tries to keep the accuracy and rigor of the information, please in kind prevail if there is any error on images or texts, welcome to point it out for improving.

In addition: If the technical of the beard trimmer has improved, it will be edited in new specification without notice. The appearance and color of the beard trimmer take the material objects.



Brand Owner: Shenzhen Eukey E-Business Co., Ltd
Email: support@suprent.com

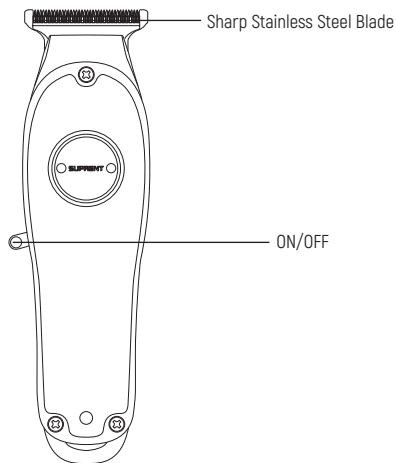
SUPRENT
Haircare, We Care



HC596 | SUPRENT Beard Trimmer

Components

1



Combs



Standard 5V/US
charging port



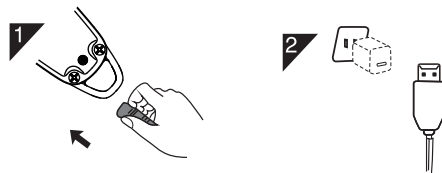
Brush

Parameters

2

Professional Hair Clipper	Motor	Operating voltage: 3V
	Battery	Battery type: 1400mAh
		Charge time: 2h
		Operating time: 3h
	Charge	USB connect with adapter 5V=1000mA
		Power: 5W

Use the Rechargeable Mode



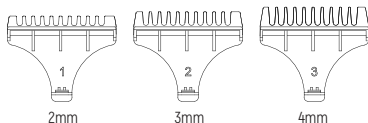
1.Insert the charger into the tail of the clipper, connect to the power to start charging.

2.The liquid crystal indicator lights up, indicating that it start charging.

Note: when the power is switched on after charging, the indicator lights up to indicate that the charging head is reversed or drawn to be replaced immediately.

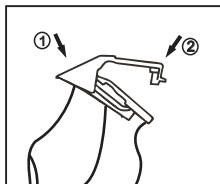
A: Features[2、3、4mm] 3 lengths adjustment to controlhair length.

- 1.To determine the length of haircut
- 2.To select the appropriate limit comb



Mount the limit comb:

- 1.Align the limit comb with the blade edge
 - 2.Slightly forward push to mount it.
- Disassemble the limit comb: Just pull hard the limit comb.



Blade Removal

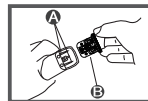


Such as a screwdriver with the rotary cutter head under part, remove the cutter head



To prevent the knife from falling, use another hand to hold it

The blade spring is aligned with the spring A on the knife head B.
Then, put in two fixed screws, and hold down.

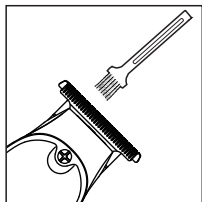


Tighten the screw with a screwdriver to ensure the head of the knife will not fall off.



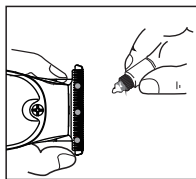
Warm tip: do not disassemble the knife head without any skill.

Taper Blade Cleaning



Clear up the blade with cleaning brush.

Taper Blade Maintenance

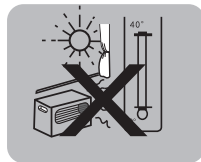


Before or after use, maintain the blade by dripping some oil on the red point places like the left picture.



1. Please do not disassemble the product.

2. Water must not be used to wash the clipper, keep away from the dampness while operating.



3. Only use a little wet cloth or neutral liquid soap to clean the product.

4. Never charge the product above 40°C heat source or below 0°C environment.

*Slight heating during the operating or charging is the normal case

*After the battery life expires, take off and throw the battery in a safe manner into the designated recycling site. Never dump it randomly.

Warranty Card

7

Product Name	Professional Hair Clipper	Warranty Period
Product Model		One year from the purchasing date
Purchasing Date	Month Date Year	To Month Date Year

Customer	Address		Name	
			Phone Number	
Point of Sale	Address		Name	
	Name		Phone Number	

Product Assurances:

1.This product has been manufactured through the precise quality management and inspection process.

2.In case of any failure during the normal operating, customer may send to the retailer or maintenance center for free-of-charge maintenance.

(Battery and blade are quick-wear parts excluding from the warranty,which shall only be provided upon the payment

3.Free service shall not be provided in either case below:

A.Any damage caused by the maintenance and transformation that is not recognized by the manufacturer.

B.Any damage caused by mistake, inadvertent use or accident.

C.Any damage caused by natural disaster and abnormal voltage.

D.Any damage caused by non-compliance with the notes as stated in this operating manual.

4.This Warranty Card shall be the only proof of warranty, while the product maintenance against invoice shall not be allowed.