

Fluke 17B+ Digital Multimeter Auto Range Multimeter With Temperature Function 4000 Counts 1000V Multimeter Tester Fluke 17b Plus



Product highlights

- NEW – CAT III 600 V safety rating
- NEW – 50 % bigger display with bright white backlight
- NEW – Over-voltage indicator

- Frequency and temperature measurement
- Voltage, resistance, continuity, capacitance
- Input terminal for ac and dc current measurements to 10 A current
- Diode test, data hold

**SIMPLE
DISTINCTION****BASIC TECHNICAL SPECIFICATIONS
OF DIGITAL MULTIMETER**

MODEL	12E+ / 15B+	17B+	18B+	107
BASIC DC ACCURACY	0.5%	0.5%	0.5%	0.5%
SIZE AND WEIGHT	183 x 91 x 49 mm / 455g			142x69x28 / 200g
AC / DC VOLTAGE	1000 V	1000 V	1000 V	600 V
AC / DC mV	400.0 mV	400.0 mV	400.0 mV	600.0 mV
AC / DC current	10.00 A	10.00 A	10.00 A	10.00 A
AC / DC mA	400.0 mA	400.0 mA	400.0 mA	–
AC / DC μ A	4000 μ A	4000 μ A	4000 μ A	–
DIODE	2.000 V	2.000 V	2.000 V	2.000 V
RESISTANCE RANGE	40.00 M Ω	40.00 M Ω	40.00 M Ω	40.00 M Ω
CAPACITANCE	1000 μ F	1000 μ F	1000 μ F	1000 μ F
ON AND OFF BUZZER	✓	✓	✓	✓
DATA RETENTION	✓	✓	✓	✓
BACKLIGHT/SLEEP	✓	✓	✓	✓
LED LIGHT EMITTING DIODE	–	–	✓ UNIQUE	–
DUTY CYCLE	–	✓	✓	✓
FREQUENCY MEASUREMENT	–	100.0 kHz	100.0 kHz	100.0 kHz
TEMPERATURE MEASUREMENT	–	–40 TO 400° C	–	–
RELATIVE VALUE	–	✓	–	–
MAX/MIN	–	✓	–	–
DANGEROUS VOLTAGE INDICATOR	–	✓	–	–
WARRANTY PERIOD	THREE YEARS / ONE YEAR	ONE YEAR	ONE YEAR	ONE YEAR
FACTORY STANDARD	HOST TL75 METER PEN 1 PAIR 1.5V 5# BATTERY X2 MANUAL WARRANTY CARD AND CERTIFICATE	HOST TL75 METER PEN 1 PAIR 80 PK -1 TEMPERATURE PROBE 1.5V 5# BATTERY X2 MANUAL	HOST TL75 METER PEN 1 PAIR 1.5V 5# BATTERY X2 MANUAL WARRANTY CARD AND CERTIFICATE	HOST TL75 METER PEN 1 PAIR 1.5V 7# BATTERY X2 MANUAL WARRANTY CARD AND CERTIFICATE

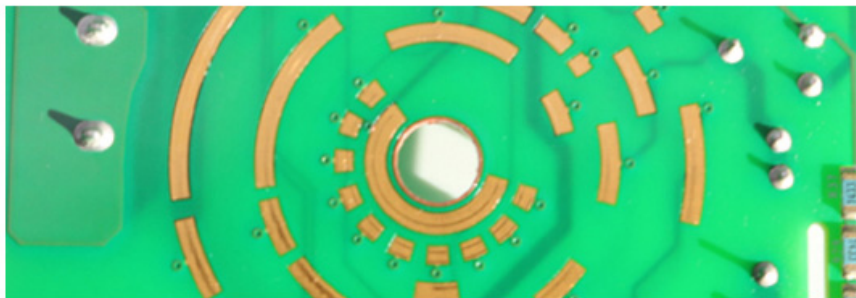
SEE THE DETAILED PARAMETERS AT THE BOTTOM OF THE PAGE OR CONTACT CUSTOMER SERVICE DIRECTLY



Fluke 17B+ MULTIFUNCTION DIGITAL MULTIMETER

- Good stability and faster response speed
- Equivalent to Fluke 15B+ upgraded version
- The basic functions of 15B+ have been added: temperature measurement, frequency measurement, duty cycle measurement, relative value, maximum and minimum settings
- Added dangerous voltage indicator
- Can be used with i400E current clamp to measure 400A AC
- Unique function: temperature measurement

2 GOLD-PLATED DIAL INSIDE THE WATCH BODY



After 30,000 Torsion Experiments, It Still Remains Accurate, More Resistant To Wear, And There Is No Need To Worry About Poor Contact.

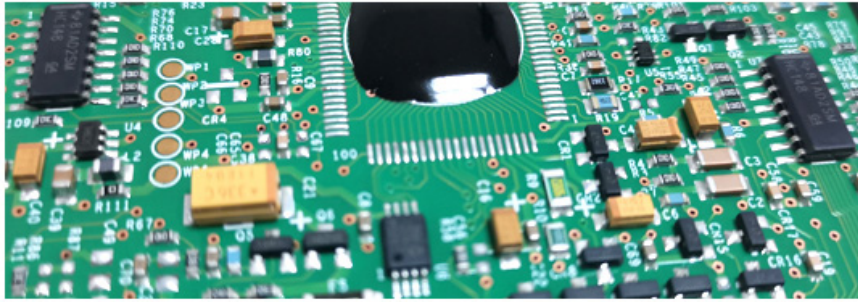
3 STURDY SHELL + SOFT PROTECTIVE COVER



The Shell Is Made Of Plastic Particles (MI) With High Mechanical Strength, And Strong Ribs Are Reasonably Added In The Design. This Is Also The Reason For The Larger Volume Of Some Products. It Has Passed The One-Meter Drop Test And Is Resistant To Falling.

4

HIGH-PERFORMANCE ELECTRONIC COMPONENTS



Ensure That The Product Can Withstand Various Interferences Such As Thermal Shock, Strong Static Electricity, High Humidity, Etc., And The Metal Parts Still Maintain Good Electrical Contact

5

THE STANDARD METER PEN HAS PASSED MULTIPLE RIGOROUS TESTS



The 8KV High Voltage Impact Test Lasting 1 Minute, 5000 Swing Tests, And 30,000 Plug-In Tests Ensure The Safety And Durability Of The Test Leads!

APPLICATION SITE

REAL SHOT



01

WITH A MAGNETIC STRAP, IT CAN BE HUNG FOR VOLTAGE MEASUREMENT WHICH IS CONVENIENT AND PRACTICAL.(OPTIONAL)

FLUKE DIGITAL MULTIMETER IS MADE OF HIGH-QUALITY MATERIALS WITH STRONG DURABILITY AND IMPACT RESISTANCE

02

WITH I400E CURRENT CLAMP, IT CAN MEASURE UP TO 400A AC CURRENT, AT THIS TIME 1MV=1A

FLUKE DIGITAL MULTIMETER IS MADE OF HIGH-QUALITY MATERIALS WITH STRONG DURABILITY AND IMPACT RESISTANCE





03

ACCORDING TO THE CURRENT IN THE CIRCUIT, SELECT THE GEAR TO DISCONNECT THE CIRCUIT, AND CONNECT THE TEST LEADS IN SERIES TO POWER OF BOTH ENDS

FLUKE DIGITAL MULTIMETER IS MADE OF HIGH-QUALITY MATERIALS WITH STRONG DURABILITY AND IMPACT RESISTANCE

04

1 Ω SMALL RESISTANCE MEASUREMENT
CONNECT THE TWO SEGMENTS OF THE RESISTOR TO ENSURE GOOD CONTACT

FLUKE DIGITAL MULTIMETER IS MADE OF HIGH-QUALITY MATERIALS WITH STRONG DURABILITY AND IMPACT RESISTANCE



05

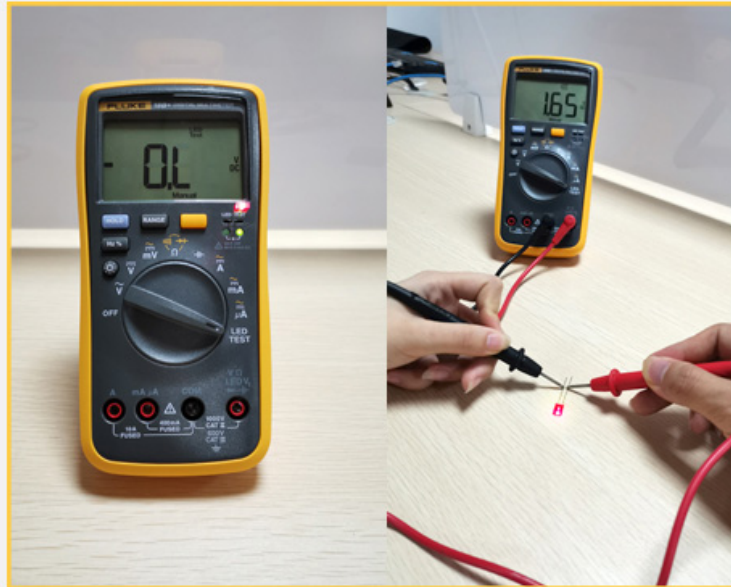
FLUKE 17B+
TEMPERATURE MEASUREMENT
CONNECT THE METER, THE PROBE END TOUCHES THE MEASURED OBJECT

FLUKE DIGITAL MULTIMETER IS MADE OF HIGH-QUALITY MATERIALS WITH STRONG DURABILITY AND IMPACT RESISTANCE

06

Fluke 18B+ TEST LED LIGHTS SUPPORT SOCKET TEST OR METER TEST

FLUKE DIGITAL MULTIMETER IS MADE OF HIGH-QUALITY MATERIALS WITH
STRONG DURABILITY AND IMPACT RESISTANCE



INTRODUCTION TO THE INTERFACE

Fluke 17B+SHOW



*THE TEMPERATURE, FREQUENCY, RELATIVE VALUE FUNCTION KEYS ARE 17B+ UNIQUE

SPECIFICATIONS

PRODUCT PARAMETERS

