

1PCS submersible pump MQB-5000 150W 220-240V/50Hz
Fish tank pumps Engraving machine water cooling pump



The parameters параметр

PREFACE

Thank you for your purchasing MQB series submersible pumps. This series adopt special motors, reasonable constructs and personalized design. It is very convenient for you to use, equip and maintain them. In order to better use the series and protect you from the danger, please look through this instruction carefully before using the series and keep it well for your future reference.

FEATURES

- This series have been equipped with thermal protectors in order that the motors will be able to cut off the power automatically once the motors get too hot while their working;
- The shells and the parts connecting with outer environment have adopted the materials against acids & saline-alkali;
- The series are amphibious pumps.
- The series have lower electric consumption and longer life expectancy due to the special motors and scientific design;
- The series have allocated various connecting ways in order to connect with different tubings.

APPLICATIONS

- It is power head that can be used as aquarium's filter and skimmer in the aquarium scaping .fountains,channels falls,etc;
- Can be used in the water circulation of seafood farming ponds and aquariums;
- Can be used in watering flower and cleaning the equipment;
- Can be used to supply and discharge the sea water or the water full of acids & saline- alkali.

INSTRUCTIONS FOR USE

- When using the series, firstly choose the proper outlet to contact with shells firmly and later connect with the tubing. Both the outlet and the tubing must be mingled by the clamp. If you use the series

on the flat or on the walls, please equip the series with the rubber feet. After fastening the series, you can use the pumps.

- When using the series on the land, firstly take away the black cover in front of the filtering casing. find out the outlet/inlet and then Connect them with the tubing. While the pumps' working. The tubing will contract. it requires that the length of the tubing' connecting part must be at most 30 cm. If you set the soft tubing as the transportation, please choose the one which will tie uneasily deformed.

- When using the series on the land, please pay attention whether the connecting is leak. If there is some bubbles in the Water. that shows the seal is not good. And those bubbles will shorten the pumps' life expectancy. Before using, you should put the pumps under the water level and make sure there is some Water left in the pumps. Or else, the pumps will be damaged while working.

NOTES

- Must be used in the water.

●Must cut off the electricity once the product works improperly and must maintain it after lifting it from the water.

WARNINGS

●Make sure the voltage and frequency you use are the same as the ones listed in the pumps' nameplates;

●Make sure the media's temperature is between 0°C and 35°C ;

●While you carry the pumps, please hold the handles;

●If you add the length of the power wire, please make sure to seal it and put it in the position where there is no water;

●Must connect the pumps with the earth while using them.

●If the pumps work without water, they will get easily damaged;

●Mustn't be used in the media full of iron;

●While using the series in the pond or brook, please put them in the position where there is less sand.

●If the pumps work wrongly, please maintain it after cutting off the electricity.

●Please clean the bearing and filtering casing regularly.

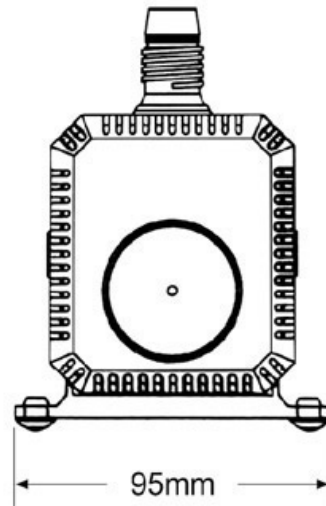
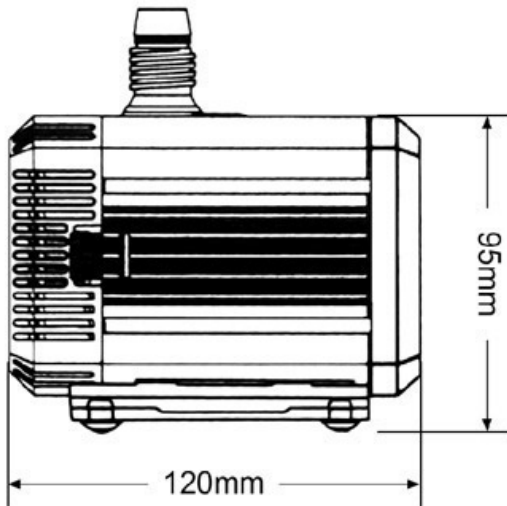
●While dismantling the series, please pay attention to the safety in the process of putting the impellers because the impellers have the magnetic.

●Mustn't be used in the media of saline-alkali.

●After the engine restarted, you should check whether the pump is working or not.

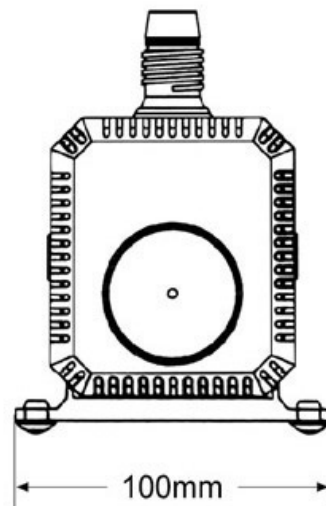
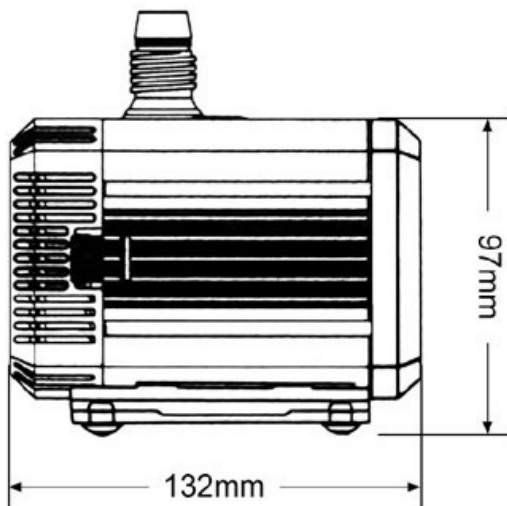
Size:

MQB-2000



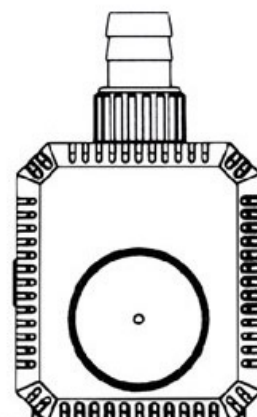
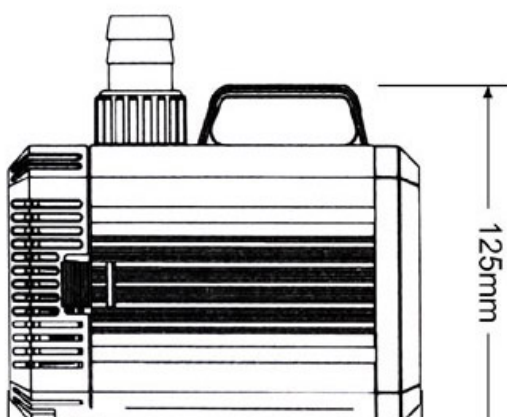
Voltage:220-240V/50Hz Power:24W H-Max:1.8m Q-Max:1400L/h

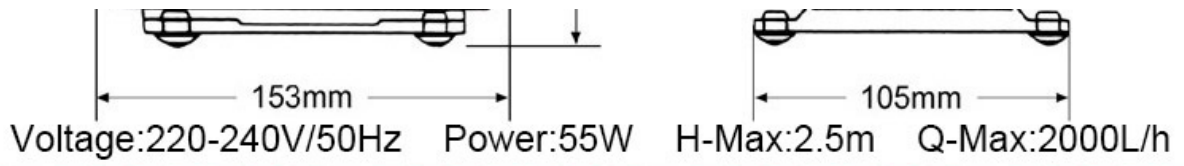
MQB-2200



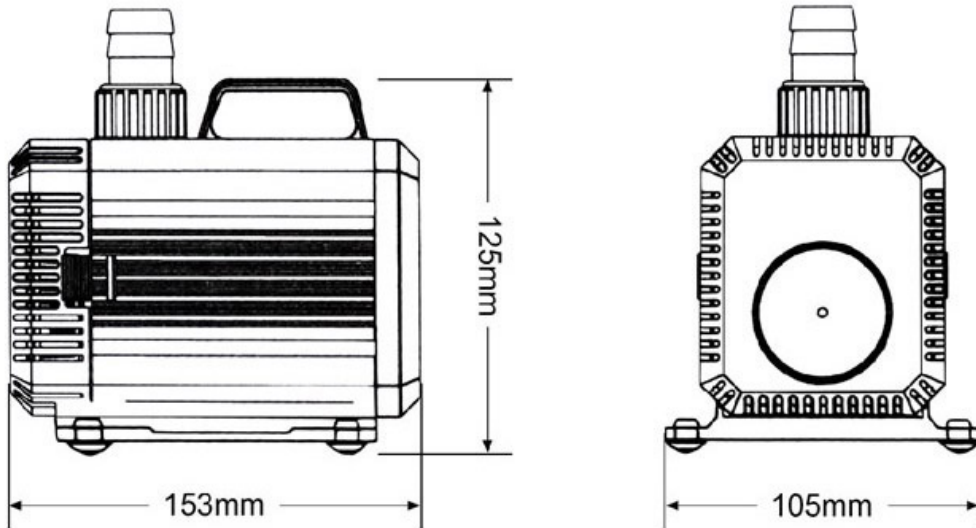
Voltage:220-240V/50Hz Power:40W H-Max:2.3m Q-Max:1900L/h

MQB-2500



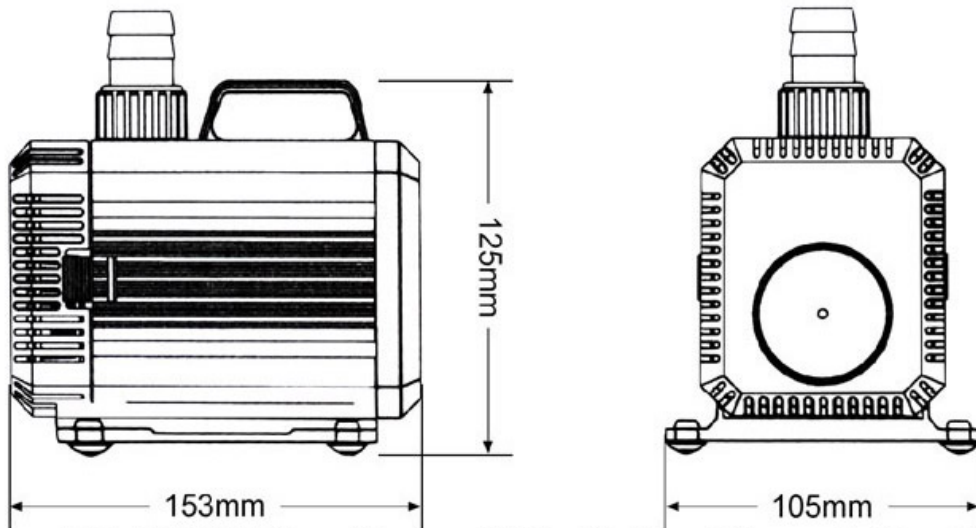


MQB-3000



Voltage:220-240V/50Hz Power:60W H-Max:3.0m Q-Max:2500L/h

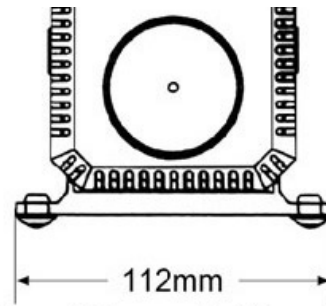
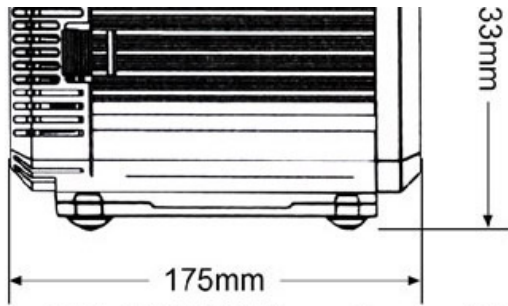
MQB-3500



Voltage:220-240V/50Hz Power:85W H-Max:3.5m Q-Max:3000L/h

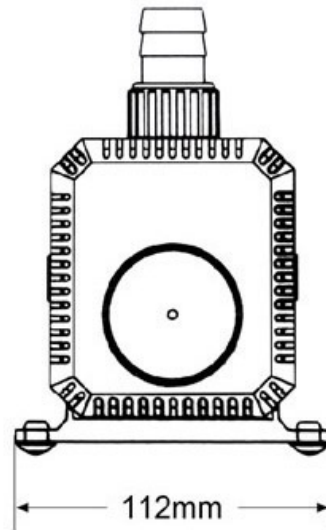
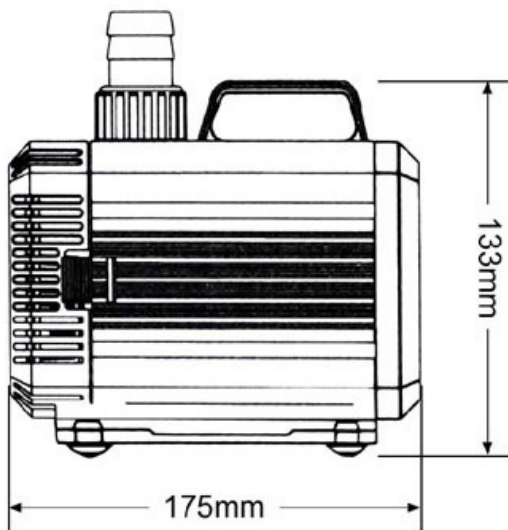
MQB-4500





Voltage:220-240V/50Hz Power:100W H-Max:4.0m Q-Max:4500L/h

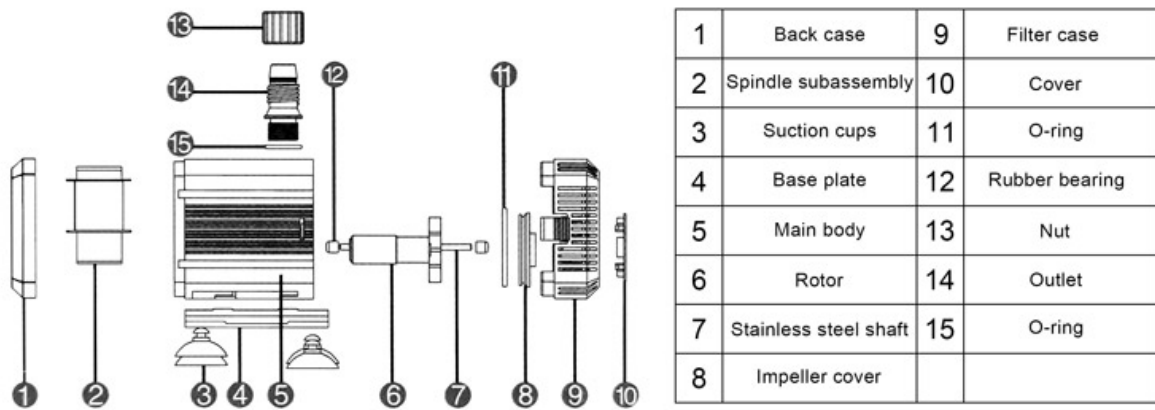
MQB-5000



Voltage:220-240V/50Hz Power:150W H-Max:5.0m Q-Max:5000L/h

MODEL SPEC	H-MAX(m)	OUTPUT(L/min)	POWER(W)
MQB-2000 The inner dia.of tubing≥16mm	0	23	24
	0.5	17	20
	1	15	17
	1.5	11	14
	1.85	6	12
MQB-2200 The inner dia.of tubing≥18mm	0	30	40
	0.5	27	35
	1	22	30
	1.5	17	27
	2	10	22
	2.3	6	18
MQB-2500 The inner dia.of tubing≥18mm	0	37	50
	0.5	34	42
	1	29	38
	1.5	24	35
	2	13	28
	2.3	10	25
MQB-3000 The inner dia.of tubing≥18mm	0	40	60
	0.5	35	55
	1	30	50
	1.5	25	47
	2	15	40
	2.5	10	33
	2.8	7	30
MQB-3500 The inner dia.of tubing≥20mm	0	50	80
	0.5	43	70
	1	38	65
	1.5	34	61
	2	29	56
	2.5	24	51
	3	13	43
MQB-4500 The inner dia.of tubing≥22mm	0	75	100
	1	60	87
	2	47	82
	3	28	78
	4	13	72

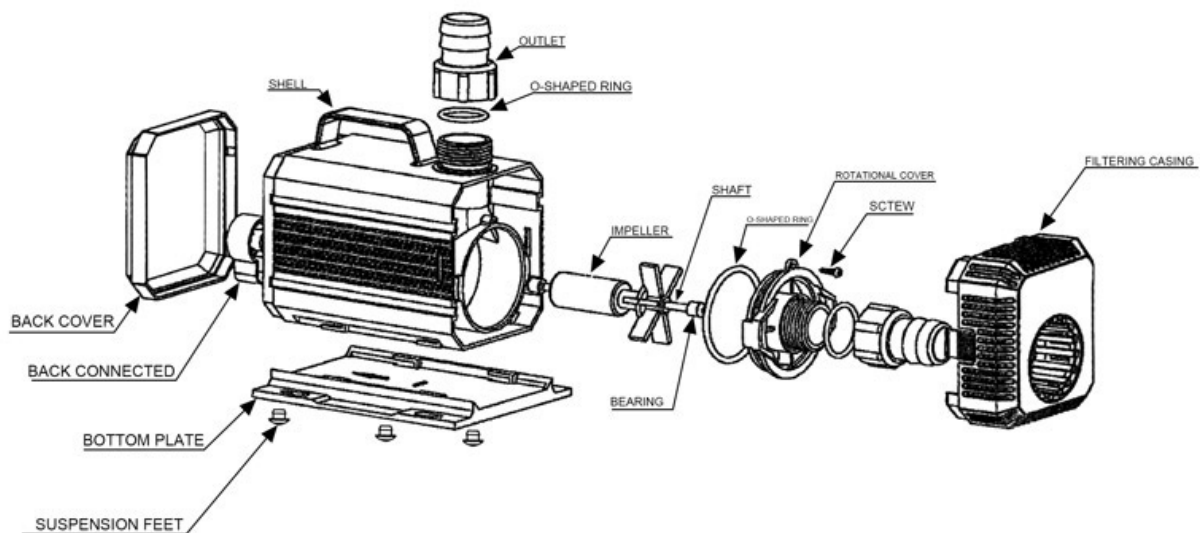
	4.5	0	70
MQB-5000 The inner dia. of tubing ≥ 22 mm	0	92	150
	1	75	132
	2	57	125
	3	37	120
	4	28	115
	5	0	110
	MQB-5500 The inner dia. of tubing ≥ 28 mm	0	117
1		97	187
2		72	180
3		40	175
4		27	170
5		17	165
5.5		0	145



SIMPLE BREAKDOWN-SOLUTIONS

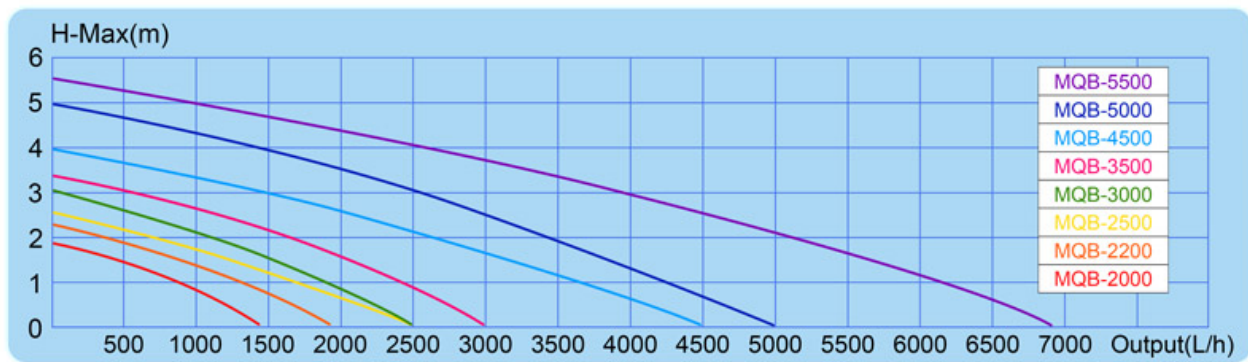
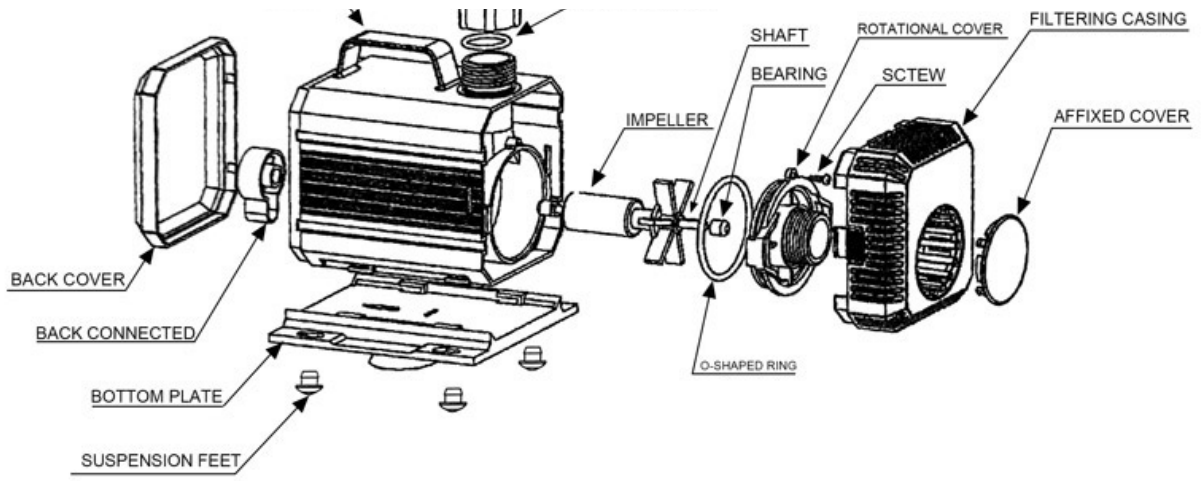
PHENOMENONS	REASONS	SOLUTIONS
The motor can not work.	<ol style="list-style-type: none"> 1.the pump has not connected with the power. 2.the plug has not been inserted the socket firmly. 3.use the pump improper and the motor cuts off the electricity automatically. 	<ol style="list-style-type: none"> 1.to connect with the power. 2.to insert the plug into the socket firmly. 3.to use the pump under the normal conditions.
The motor produces noise.	There is some foreign matter in its water room.	Take apart the pump and cleanse the foreign matter.
The output of the water is not enough.	<ol style="list-style-type: none"> 1.the impeller gets broken. 2.the connecting tubing gets blocked or the filtering casing gets blocked. 3.the depth of the pump position in the water is not enough. 4.the power's voltage is not enough. 	<ol style="list-style-type: none"> 1.to change the broken impeller. 2.to cleanse the block. 3.to put the pump in the position which is 15cm deep below the water level. 4.to adjust the power voltage to the proper one.

SCHEMATIC DIAGRAM ON INSTALLMENT(THIS DIAGRAM FOR LAND-USE)



SCHEMATIC DIAGRAM ON INSTALLMENT(THIS DIAGRAM FOR WATER-USE)





The Description

описание