



A005-V2.0

# WIRE-FREE 2K SECURITY CAMERA KIT

## QUICK START GUIDE



Amazon Email: [johnny@hiseeu.com](mailto:johnny@hiseeu.com)

WeChat ID: +8613392810296

Website: [www.hiseeu.com](http://www.hiseeu.com)

Whatsapp: +8613392810296

Tel: 1-917-338-1084

(Available Pacific Time 5:00pm-12:00pm)

\*Please read this manual thoroughly before using and keep it for future reference.

Thanks for your trust to purchase wireless battery camera kit from Hiseeu and please accept our sincere appreciation here.

If you are satisfied with our product or service, could you please spend a minute to share your product experience on Amazon? Our base station NVR can expandable to 4 cameras. If you want to add more extra, pls search this ASIN on amazon: **B08HN4QXBY** **More information can be found on our website,any suggestion or questions**, please feel free to contact by Email or hotline number. Your precious customer review will help us shape our business to the best and let other customers know more about Hiseeu product and service, your unwavering support and patronage is our motivation to go further.

Thanks again and wish you all the best.

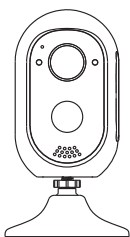
# Contents

Box Contents .....	01
Product Overview .....	01
1. NVR.....	01
2. Battery Camera .....	03
3. Battery Camera with Solar Panel .....	04
Connect Your Base Station NVR To A Mobile App.....	04
1. Install EseeCloud App.....	04
2. Register Account and Login .....	04
3. Connect the device .....	06
Main Menu Functions.....	07
Mall.....	08
Me .....	08
Live Video .....	09
Video Playback .....	10
Base Station NVR Settings.....	11
Cameras function settings .....	11
Record Setup Mode .....	12
Cameras Night Vision Mode .....	13
Camera Working Parameters.....	14
Expandable Cameras and How to Add Them to The Base Station .....	15
Frequently Asked Questions.....	15

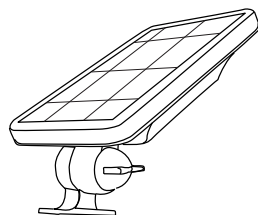
# Box Contents



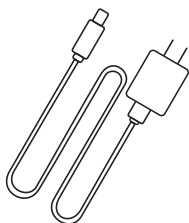
WIFI NVR×1



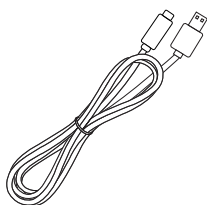
Battery Camera×2



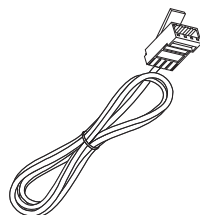
Solar Panel×2



USB power supply×1  
(for NVR)



Type-C power Cable×2  
(for Camera)



Ethernet Cable×1



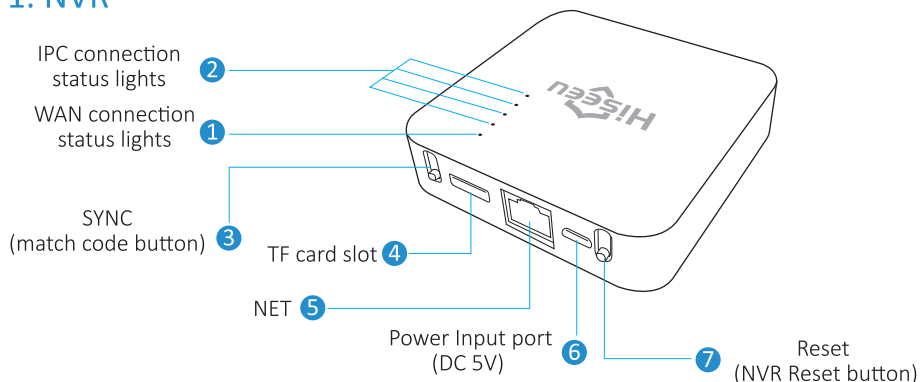
User manual×1



Screw bag×2

# Product Overview

## 1. NVR



1. **WAN connection status indicator:** When LAN or WAN disconnect, it will flashes slowly. When WAN connects, it is always on.
2. **Cameras connection status lights:** When camera is connected to the base station, the lights is steady on, when disconnected, it will flashes slowly.
3. **SYNC (match code button):** Long press the button for 4 seconds to enter the match code state, hear the voice prompts: "start matching code, please wait for the voice prompts to complete"; and then press the camera reset button for 10 seconds, and wait for a while until have voice prompts : "Matching code Success", if match code failed, it will prompts "Matching code fails."
4. **TF card slot:** After inserting TF card (SD card), the system defaults to motion recording.

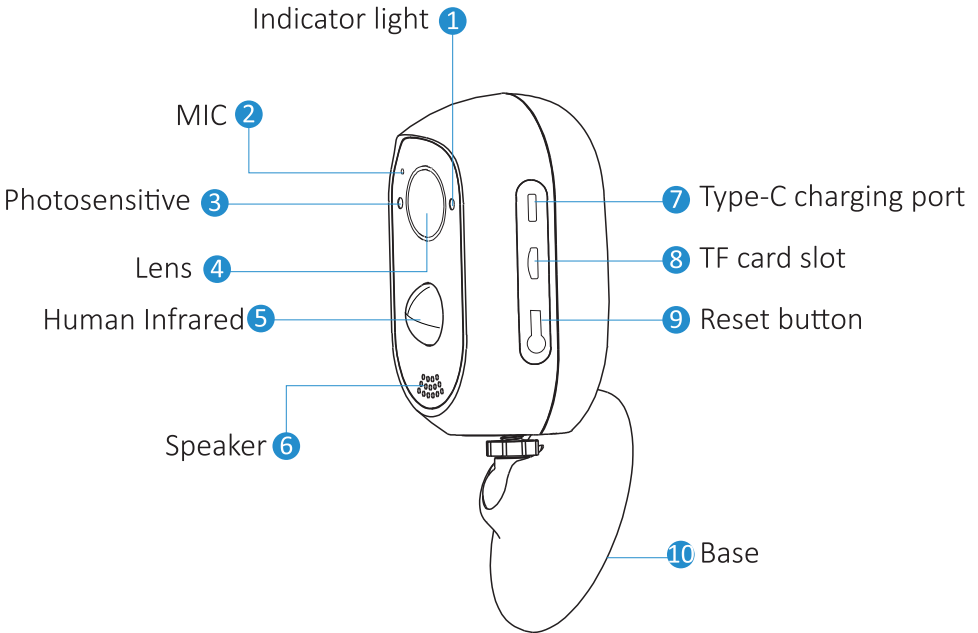
**Camera reset button (Matching Code Method):**

- a. Press the camera reset button for 10 seconds, reset the camera to factory settings.
- b. Press the Mini NVR "Sync" button for 4 seconds. waiting for the voice prompt "matching code success", check that the Mini NVR channel indicator is steady on. If the indicator is always on, then matching code is successful.

**(Note:** camera and Mini NVR are already matched code before shipping, no need to pair again, plug and play. If users need to replace or add new camera, please follow the above instructions to pair the camera.)

5. **NET:** Network cable interface, connect to router
6. **Power Input port (DC 5V):** Mini NVR power slot.
7. **Reset (NVR Reset button):** Long press 10 seconds to reset the NVR to factory settings.

## 2. Battery Camera



The explanation of LED indicator and some function buttons

**Green light + red light is always on:** The camera is being previewed remotely (privacy light)

**Green light is on for 1s:** The device is turned on or is woken up

**The green light flashes constantly:** Upgrading

**Green light is always on:** Charging

**Red light flashes 3 times:** Power off

**Red light flashes constantly fast:** Matching code

**Red light flashes constantly slowly:** Connecting to the internet

**Red light is always on:** Low battery

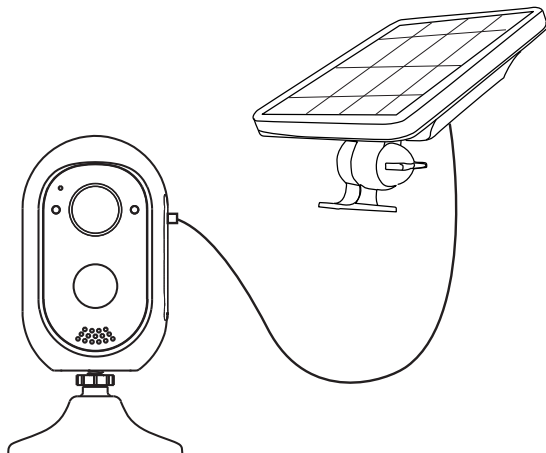
**7. Type-C charging port:** use 5V 1A type-C power cable to charge camera

**8. TF card slot:** if your NVR already insert SD card for record, then don't need insert SD card to cameras.

**9. Reset button:** Press and hold for 2s to power on the camera.

Short press 3 times constantly to power off ,you will hear a shutdown prompt tone.

### 3. Battery Camera with Solar Panel



Open the camera rubber cover, insert the solar panel type-C cable to it. Solar charging panel that can be used in conjunction with it, so you don't have to worry about the battery electricity of the camera.

## Connect Your Base Station NVR To A Mobile App

### 1. Install EseeCloud App

Search EseeCloud in your mobile app store or scan the following QR code to download and install.



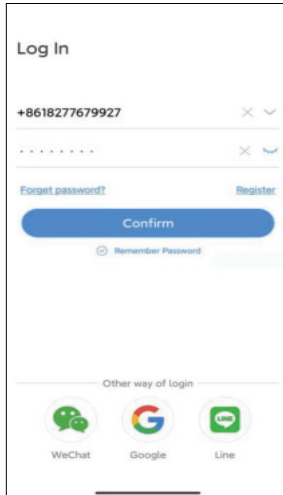
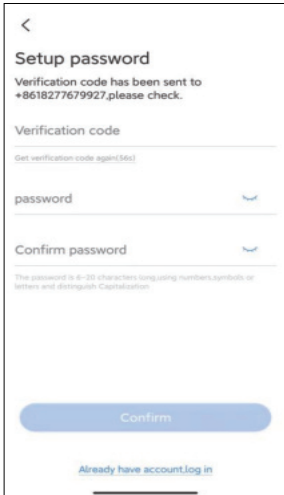
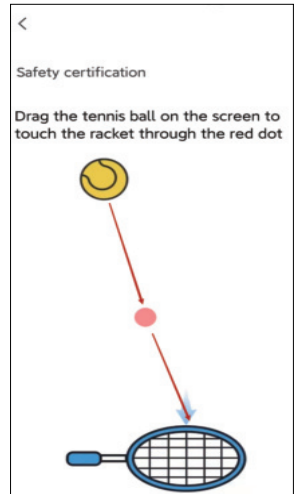
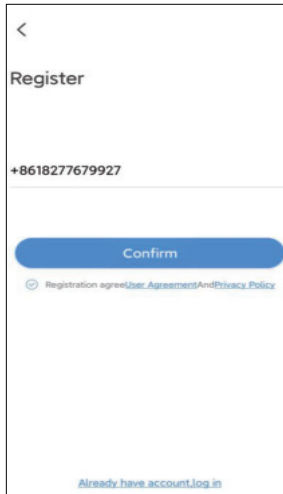
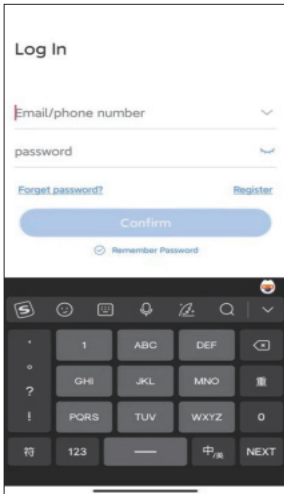
EseeCloud App



EseeCloud App download

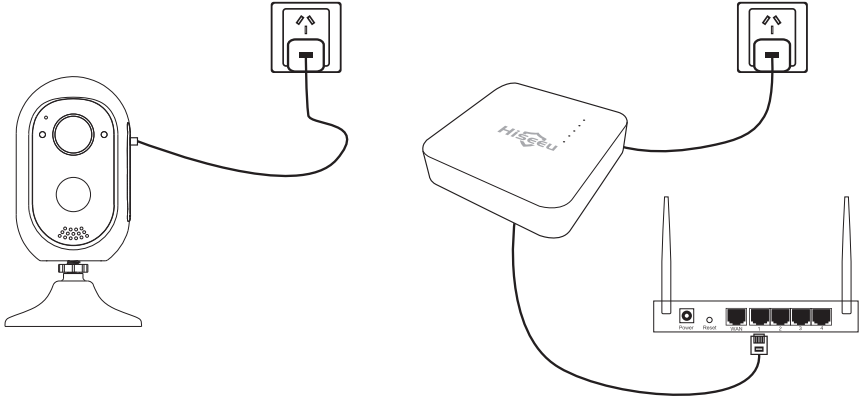
### 2. Register Account and Login

Launched the EseeCloud app, register an account by a valid Email address or phone number as the new user and then log in.



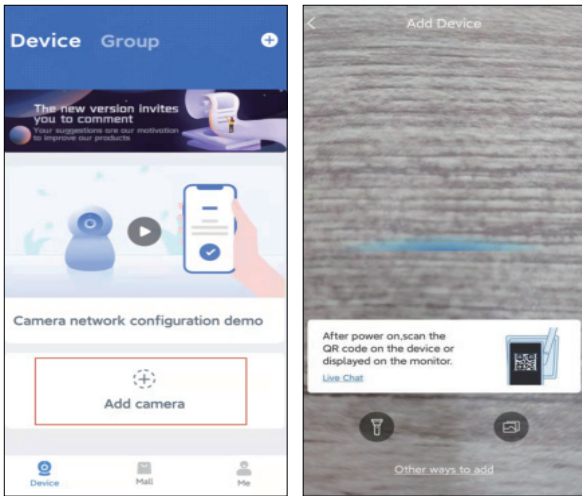


### 3. Connect the device

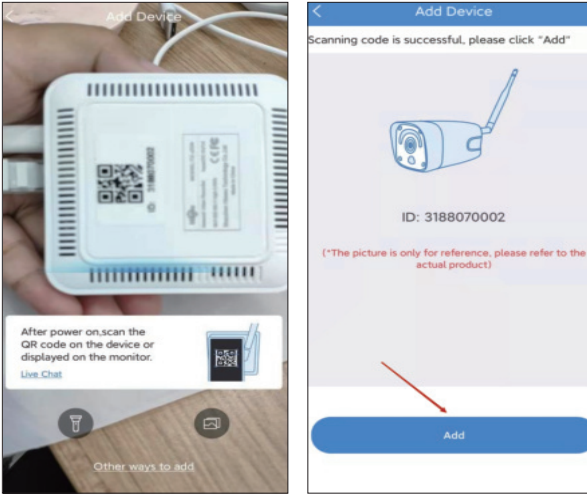


Press and hold the button for 2s to power on the camera, if it doesn't on, pls use the cable charge the camera. Connect the NVR to a power source using the USB cable, and then connect it to your WiFi router by network cable.

1) Log in EseeCloud app, tap Add camera .

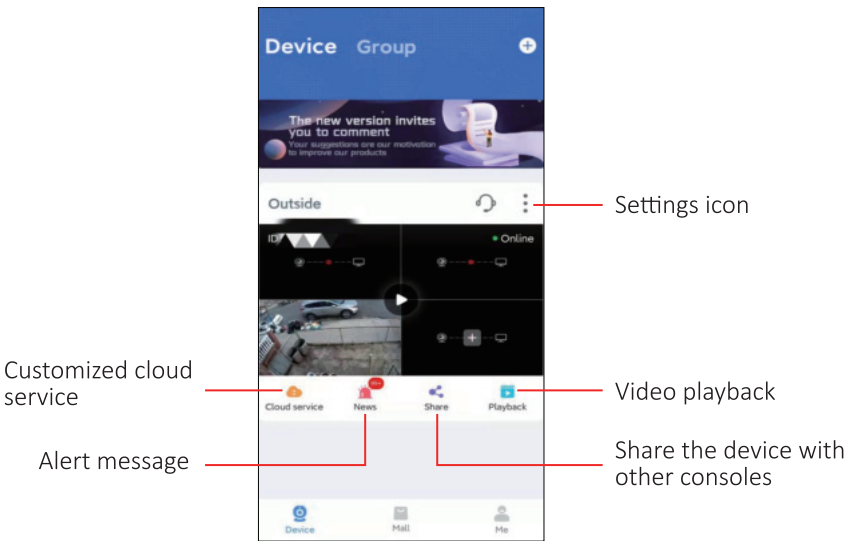


2) Scan the base station's QR code, then click Add.



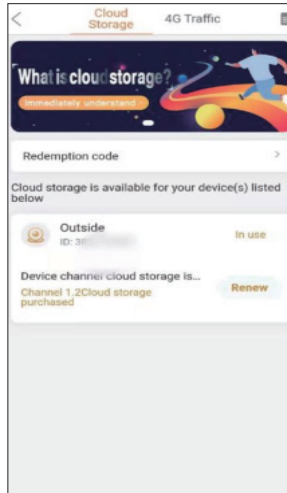
Set a device name, click confirm, then click Complete.

## Main Menu Functions



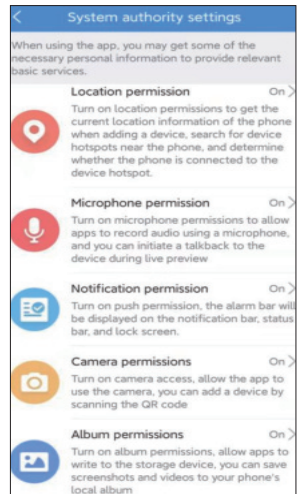
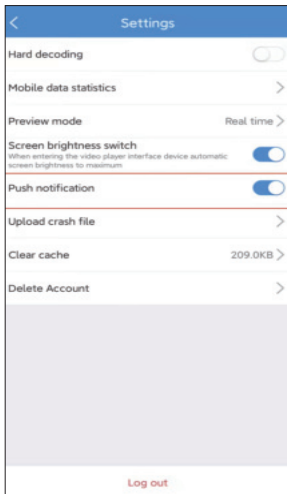
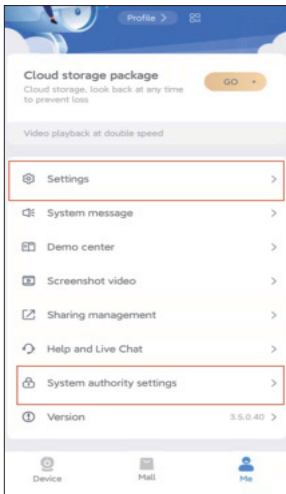
# Mall

Purchase cloud service

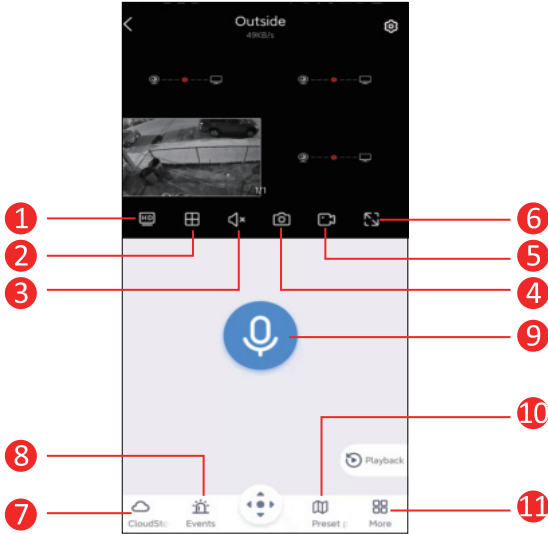


# Me

Click on settings → enable push notification → click on system authority settings → open permissions. Then your mobile phone will receive an alert message when the cameras detected.



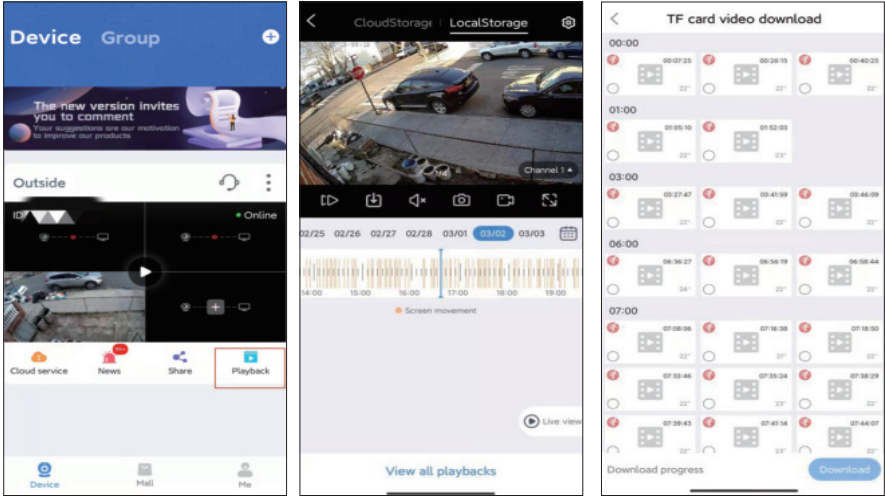
# Live Video



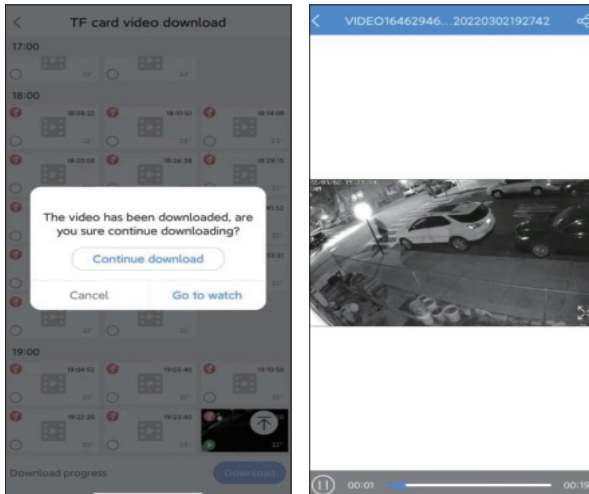
1. Adjust Picture quality, switch the SD/HD manually.
2. It can display all four cameras view at the same time, or you can choose to display only one screen.
3. Turn on/off volume .
4. Screenshot of current cameras view.
5. Manual record.
6. Horizontal view.
7. Cloud record playback / local SD card playback.
8. View alarm message
9. Microphone, support two-way audio, press to talk.
10. Preset position (This camera doesn't support)
11. For more option.

## Video Playback

Please click the **Playback** button access to local storage, and you can select the time and date to watch the video(if you've subscribed to a Cloud, please click **Cloud Storage**). You can also download the playback videos, please click"View all playbacks".

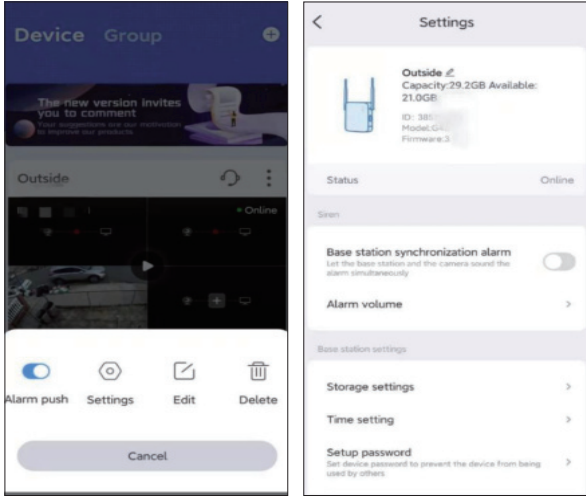


Select the video you want to download,after success, please click on Go to watch.



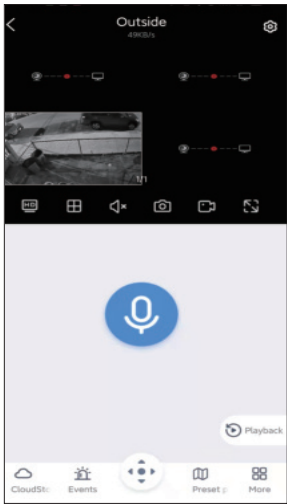
# Base Station NVR Settings

Click the three dots to show the settings icon. Click storage settings you will see the SD card storage status→Time settings→Set a password for your base station NVR.

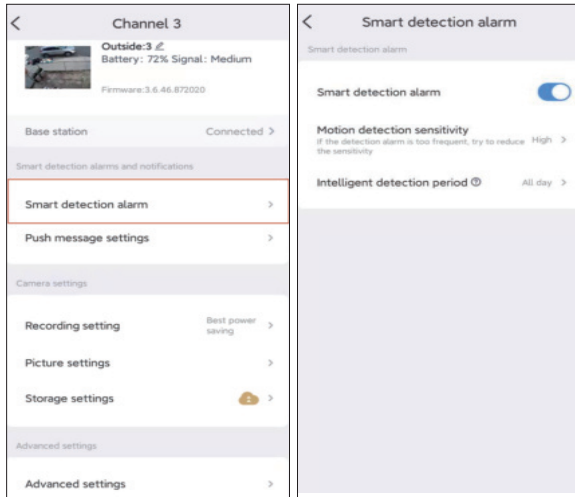


# Cameras function settings

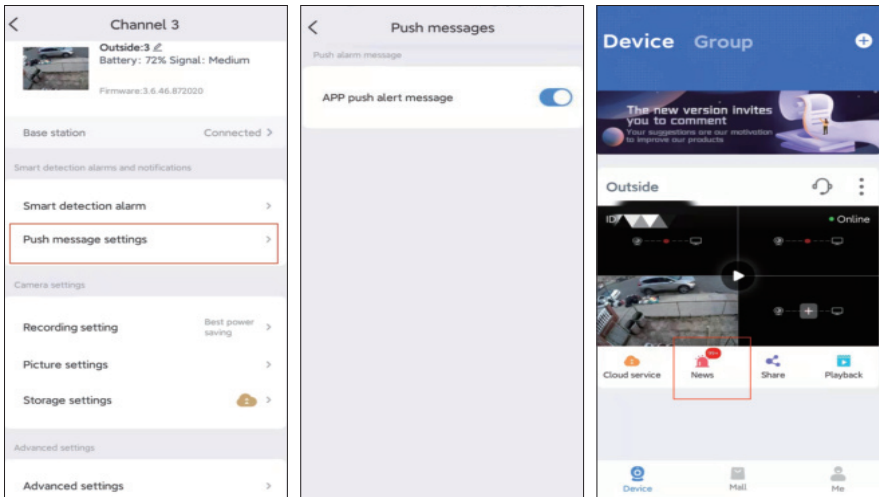
Click the play button to access the live view→click the upper right corner to access the camera channel settings.



You will see your camera battery and signal status there.  
Enable **detection alarm**→adjust the **motion sensitivity**→Set the time you want to detect.



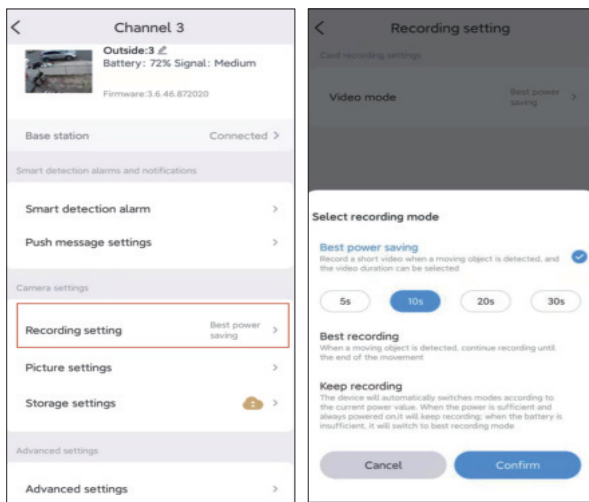
Enable APP push alert message, otherwise your cameras won't send the alarm message to your phone app.



## Record Setup Mode

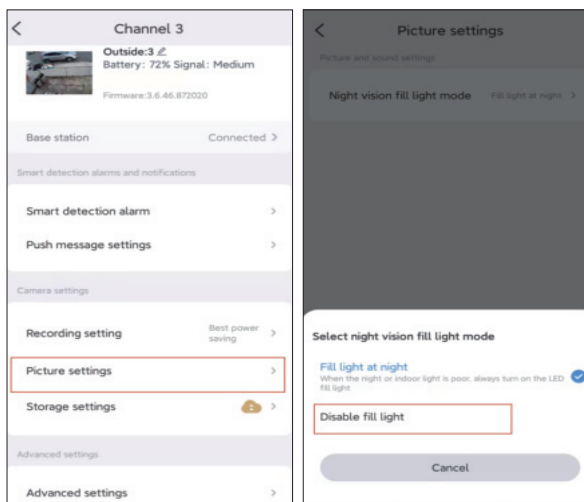
Since this is a battery/solar-powered camera, its main function on the market is to make the camera work for a long time without charging,

so it is best to set it to record only when motion detection is triggered. If you need to record all the time, it's need to plug in the camera's power cord all the time and change the device's recording mode to Keep recording.



## Cameras Night Vision Mode

Click picture settings to access night view mode, the battery camera doesn't have a floodlight, so please choose disable fill night(means infrared model).





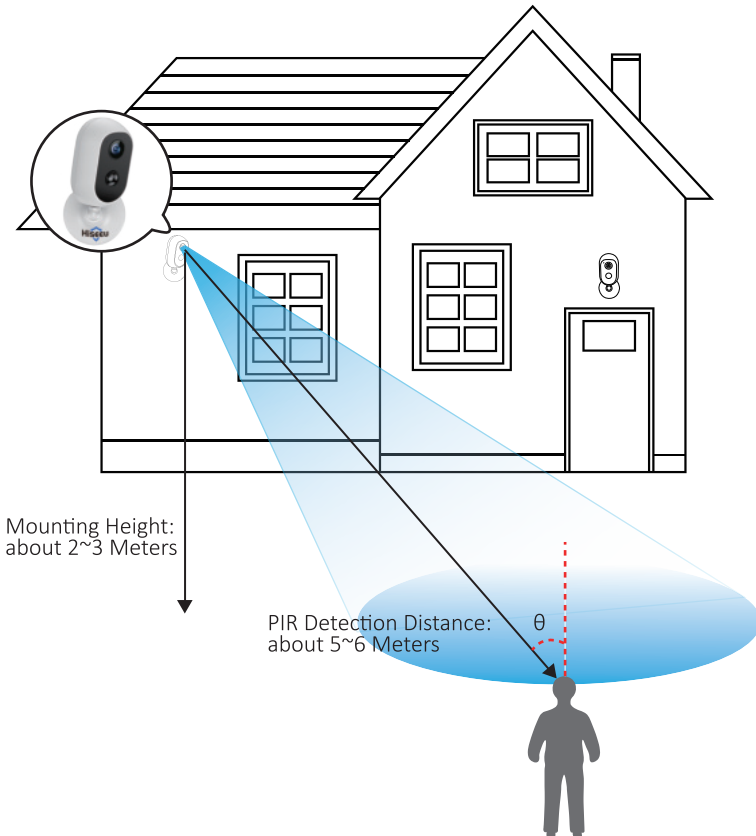
## Camera Working Parameters

1. The camera shooting angle is about  $90^\circ$ .
2. PIR senses human activities, and the distance to activate the monitoring is about 16ft~20ft.
3. It takes about 6 hours to fully charge.
4. The camera is not easy to appear offline within 100ft from the base station.
5. When using the camera for the first time, it is recommended that you charge the camera for 12 hours first.

Install the camera 2-3 meters (7-10ft) above the ground to maximize the detection range of the PIR motion sensor.

For effective motion detection, please install the camera angularly.

NOTE: If a moving object approaches the PIR sensor vertically, the camera may fail to detect motion.



## Expandable Cameras and How to Add Them to The Base Station

This battery camera kit can support add four cameras. The following cameras ASIN can compatible with this base station. If you are interested in these cameras and need them, please feel free to contact us.

(B08HN4QXBY) (B08293P67Z) (B08TWG2N5D) (B096XPT915)  
(B09MCR246C)

### How to pair the cameras to a base station?

Press the camera reset button for 10 seconds, reset the camera to factory settings.

Press the Mini NVR "Sync" button for 4 seconds, wait for the voice prompt "**matching code success**", check that the Mini NVR channel indicate light is steady on. If the light is always on, then match code is successfully.

## Frequently Asked Questions

**Q: One of the cameras can't show picture on the app , what should I do?**

A: 1) Please make sure the battery camera and NVR is in a valid signal range. Don't install the camera too far away from the NVR, otherwise the cameras won't always stay online.

2) Check if the cameras have enough electricity to work. We suggest that the solar panel should be installed in the place where the strong sunlight can be received continuously. If it is cloudy continuously, we suggest that you can charge the camera with a charger to wait for the sunny day.

3) If the cameras fill with power, you can try to power it off and power on again to check. Short press power button 3 times in a row: power off (red light flashes 3 times + prompt tone) Long press power button for 2s: power on

4) Follow the below step match code the camera again .

Press the camera reset button for 10 seconds, reset the camera to factory settings.

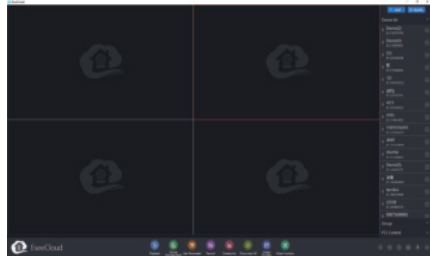
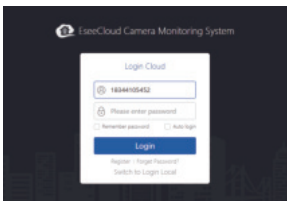
Press the Mini NVR "Sync" button for 4 seconds. wait for the voice prompt "matching code success", check that the Mini NVR channel indicate light is steady on. If the light is always on, then match code is successfully.

### Q: Device offline?

- A: 1. Check the NVR NET indicate light still on.  
2. If the light is off, please check the power cord and Ethernet cable. Better reboot your WiFi router.  
3. If above all be confirmed, you need to reset the base station and configure the network again.

### Q: How do i view my cameras on computer?

A: You must register an account of EseeCloud on your mobile app and add the device first. So that you can view it on PC.



- Select "login Cloud"
- Input account and password of Eseecloud on the mobile terminal, click login.
- After logging in the account and password, the device will automatically synchronize to the computer.

If you need the EseeCloud software of PC, please send the email to [Johnny@hiseeu.com](mailto:Johnny@hiseeu.com).

### Q: Can't receive alarm notification?

A: 1. Please make sure you have open the notification permission on your phone. Go to App **personal center settings**→Click on **settings**→enable **push notification**→click on **system authority settings**>open **permissions**. Then your mobile phone will receive an alert message when the cameras detected.

2. Please confirm you have enabled APP push alert message on the cameras settings, otherwise your cameras won't send the alarm message to your phone app.



How can I get technical support?

US Hotline:1-917-338- 1084

(Available Pacific Time 5:00pm-12:00pm)

Amazon Email:[johnny@hiseeu.com](mailto:johnny@hiseeu.com)

WeChat ID:+8613392810296

Website: [www.hiseeu.com](http://www.hiseeu.com)

Whatsapp :+8613392810296