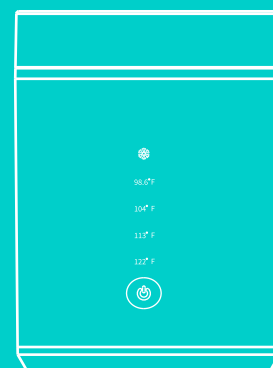


## Portable Bottle Warmer

Model No.: EMW001

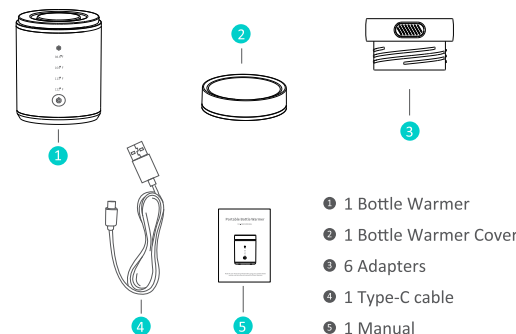


**Warning:** Please keep this product out of the reach of children to prevent burns. And please read the instructions carefully before use to avoid burn caused by incorrect operation.

### Introduction

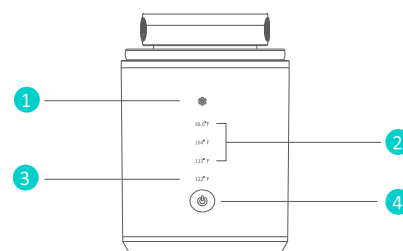
Easy@Home EMW001 Portable Bottle Warmer is a portable bottle warming device. The product converts electrical energy into heat energy through the heating piece to achieve heating and heat preservation effects. The product includes functions such as fast defrosting, multiple temperature control, and heat preservation effect. Also, it comes with 6 adapters of different sizes, which can meet most of the mainstream brands of baby bottle of different calibers in the market. EMW001 Portable Bottle Warmer is intended for people to heat milk or distilled water outdoors to meet the precise temperature of baby feeding.

### Product components



- 1 Bottle Warmer
- 2 Bottle Warmer Cover
- 3 Adapters
- 4 Type-C cable
- 5 Manual

### Control panel



- 1 Defrost mode
- 2 Milk warming mode
- 3 Water warming mode
- 4 Power button/ mode switch button

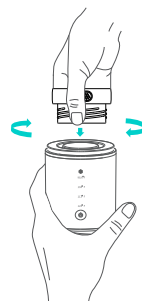
### Caution

- 1) Do not use the water warming mode to heat up breast milk or milk powder, as the heating temperature is too high and may damage the nutrition of breast milk or milk powder.
- 2) Please check the remaining power before using. If the power button indicates a red light, please do not use to avoid not reaching the heating temperature and use a certified 5V-2A power adapter to charge as soon as possible.

### How to use

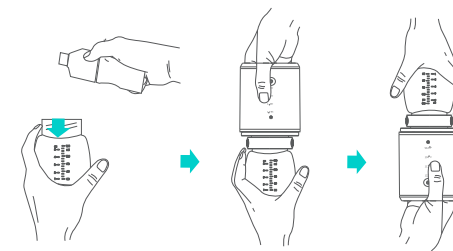


- 1) Remove the cover of the bottle warmer and make sure that the silicone seal ring fits firmly.
- 2) Choose an appropriate adapter for various bottle. Connect it and confirm that the connection is air-tight. (If the bottle can be connected directly to the warmer, the adapter is not required, except for glass bottles.)

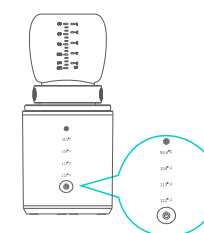


**Note:** To prevent from scald, do NOT turn on the product when assemble the adapter.  
Do NOT connect the glass bottle to warmer without adapter.

- 3) Pour cold milk or distilled water into the baby bottle, and connect the bottle to the bottle warmer. Confirm the connection is airtight and then reverse the bottle warmer.



- 4) Long press the power button for 2 seconds to turn on, short press the power button to select a desired temperature mode.

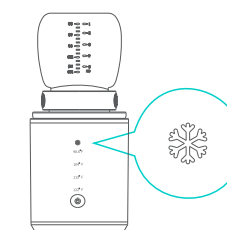


- 5) When ready to remove the bottle, press and hold the power button for 2 seconds to turn off the unit. Flip the device upside down, unscrew the baby bottle and shake the bottle well to ensure proper heat distribution.

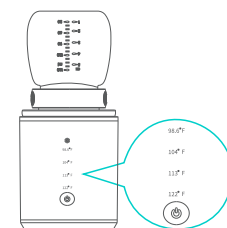
Always check the liquid's temperature before feeding.

**NOTE:** Warming a second bottle – Allow at least 5 minutes for the unit to cool before next use.

### Indicator light description



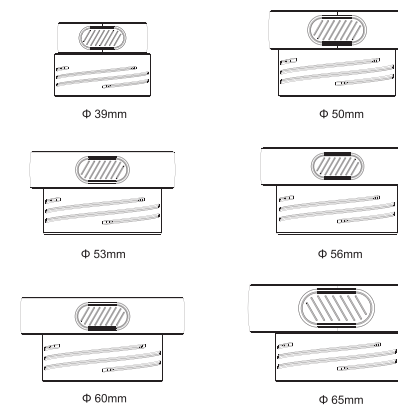
- 1) When the bottle warmer is switched on it automatically detects the liquid temperature, when the temperature is below 59°F(15°C) the warmer jumps to defrost mode and the blue light flashes in the form of a breathing light. When the temperature reaches 86°F(30°C) the defrosting is complete and it jumps to 98.6°F(37°C) milk warming mode.



- 2) Short press Power button to switch the milk/water warming temperature, the green light flashes in the form of a breathing light during heating process; after the milk warming is completed, the green light lights up steadily indicating that it enters the heat preservation state.

**NOTE:** To ensure your liquid is warmed properly, wait until the end of the warming cycle before removing the bottle.

### Adapted bottles

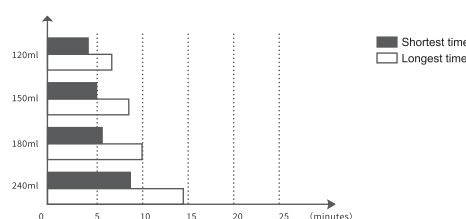


The bottle warmer is suitable for 55% of the wide-bore bottles available on the market and with 6 adapters it can fit up to 92% of the bottles available on the market, please check the mouth diameter of your bottle and choose the appropriate adapter before using. (As each brand has different sizes of bottles, please choose the most suitable adapter)

**Note:** Glass bottles should not be connected directly to the bottle warmer. When connecting the glass bottle to the milk warmer via the adapter, care should be taken to avoid breaking the glass.

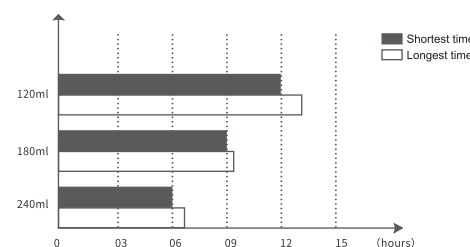
### Heating time reference table

The heating time is the laboratory data for heating to 104°F(40°C) which is for reference only. In practice, the heating time may vary depending on the bottle material, ambient temperature and water temperature.



### Heat Preservation Time

Warmer can keep water warm at 104°F(40°C) for 12 hours after a full charge. The actual time for keeping warm depends on environment or other factors.



### Cautions

- 1) Please use this product in an environment between 50-95°F (10-35°C).
- 2) Please check the condition of the product before use and do not use if it is damaged.
- 3) Please clean the surface of the heating pot with distilled water before use to avoid contaminating the liquid.
- 4) During heating, do not touch the heat-conducting metal surface to avoid scald; if you need to interrupt the heating, please switch off the power and leave it for 30 seconds.
- 5) After warming the liquid, check that the liquid is at the right temperature before feeding your baby.
- 6) When not in use, do not place it in direct sunlight or near heat sources or toxic substances
- 7) Please use under adult supervision and do not use any part of the product as a toy; keep the product out of the reach of children when not in use.
- 8) This product has a built-in polymer rechargeable battery and should not be used in Strong electrostatic environments or magnetic

field environments, as this may damage the battery's protective device and pose a safety hazard.

- 9) Please use an adapter that meets local safety requirements for charging. (Input 100-240V-50-60HZ-0.45A /Output: 5.0V 2000mA)
- 10) Please unplug when you have finished charging to avoid fire hazards from prolonged charging.
- 11) To protect against electrical shock, do not immerse the appliance, cord or plug in water or any liquid. Clean with damp cloth only. Avoid spillage on the connector.
- 12) For use by adults for intended purposes only. Any other use is inappropriate and dangerous.
- 13) Product should be placed on a flat and stable area away from hot surfaces.
- 14) Do not let cord hang over edge of table or counter or touch a hot surface.
- 15) Do not move this product when in use or if it contains hot water or liquid.
- 16) Ensure the baby bottle contents are at a safe temperature before feeding.
- 17) Use plastic baby bottles approved for boiling or glass thermo-resistant baby bottles with this product. May cause serious injury if used with any other vessel.
- 18) Allow to cool before putting on or taking off parts and before cleaning. Allow warmer to cool before cleaning.
- 19) Do not operate any product with a damaged cord or plug after the product malfunctions or has been damaged in any manner.
- 20) Always attach plug to the warmer first, then plug cord into the wall outlet. To disconnect, turn any control to "off" then remove plug from wall outlet.

- 21) Do not use this product for other than intended use.
- 22) Before serving the contents, unplug cord from wall outlet. Do not leave cord within child's reach.
- 23) Extreme caution must be used when moving an appliance containing hot liquids.

### Cleaning

- 1) Clean the product before each use and after completing use.
- 2) Always unplug unit and ensure that it is cool before cleaning.
- 3) Dampen a clean, soft cloth with water and wipe the remaining liquid from the bottle warmer with the cloth. Do not soak or rinse the machine under the tap.
- 4) After cleaning, wait for the stainless steel to dry before storing it with the cover on.

**Note:** To prevent bacteria from growing, please be sure to clean the remaining liquid on the machine after each use.

### Maintenance

To ensure the heating efficiency of this product, it is recommended that the stainless steel heating pot is descaled and maintained every month.

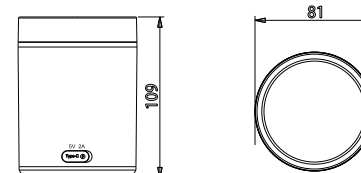
- 1) Mix water with a small amount of white vinegar or citric acid descaling agent in the bottle, then connect it to the bottle warmer and turn it on.
- 2) Turn off the power after 30 minutes. After the scale has dissolved, clean and dry the steel part.

**Caution:** Do not use caustic or antibacterial cleaners, high concentration cleaner may cause corrosion and breakage of the product; if breakage occurs, stop use.

### Storage

Store in dry and dust prevention environment.

### Product parameters



Model	EMW001
Product Size	81x81x109 mm
Input Voltage	5V 2A
Output Voltage	6.6V-8.4V
Max Power	45W
N.W.	395g
Battery	4400mAh
Service Life	3 years

### Warranty

This product is warranted by manufacturer for one year from the date of retail purchase. It does not cover damages or wear resulting from an accident, misuse or abuse, commercial use, or an unauthorized adjustment or repair of the product.

### FCC information

This device complies with part 15 of the FCC Rules. Operation is subject to the following two conditions: (1) This device may not cause harmful interference, and (2) this device must accept any interference received, including interference that may cause undesired operation. The limits for a Class B digital device are designed to provide reasonable protection against harmful interference in residential settings. This product generates, uses and can radiate radio frequency energy, and, if not operated in accordance with the instructions, may cause harmful interference to radio communications. The user is cautioned that changes or modifications not expressly approved by the party responsible for compliance could void the user's authority to operate the equipment.

### FAQ

- Can I use the bottle warmer to keep water / breast milk all night ?  
1. You can keep water warm overnight.  
2. You can keep milk warm at night, but less than half an hour is suggested. Milk is perishable if stored over half an hour.

- What is the recommended temperature to heat up to ?  
1. 98°F ~104°F(36~40°C) for breast milk /protein powder / probiotics  
2. 105°F ~113°F(40~45°C) for milk powder / water  
**Note:** Take the bottle and sprinkle a few drops on the most sensitive part of your arm — the inside of your wrist. If it is ready for the baby to drink, the milk should feel warm, not hot or cold.

• Why the lower ambient temperature , the longer heating time ?  
Lower ambient temperature, lower initial water temperature, long heating time .

• Can it work during charging ?  
It can work during charging but you need to make sure the battery is more than 50% , in case that can not heat up to the certain temperature for low battery.

• Why the warmer is still warning when there is already water inside ?  
When adding hot water to keep warm, please wait for 10 to 30 seconds before turning on the warmer, in case of the false alarm due to the temperature difference between hot water and warmer.

### Explanation of symbols

	Manufacturing date		Recyclable
	Batch code		Keep dry
	Refer to instruction manual		

### Healthcare-Manager.com

Questions or Comments?  
Please call toll-free:  
1-855-822-6999 M-F 9 a.m.-5 p.m. CST  
E-mail: service@healthcare-manager.com  
Manufactured for:  
Easy Healthcare Corporation  
360 Shore Dr., Unit B, Burr Ridge, IL USA 60527  
Made in China