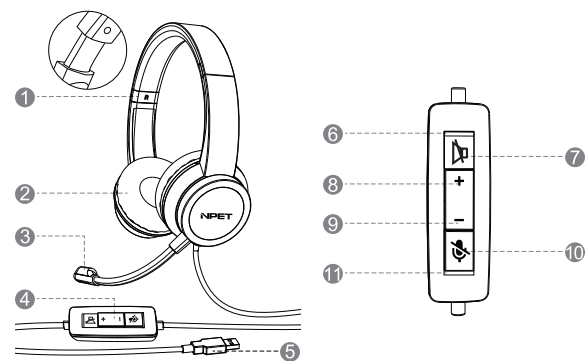


**NPET**

### NPET Computer Headset CH20 User Manual



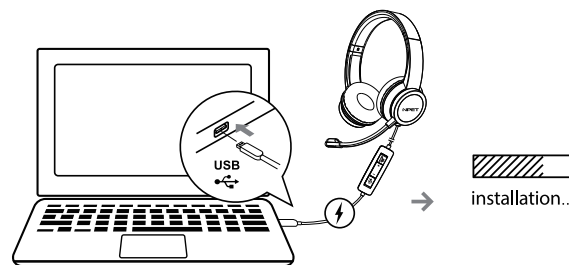
#### Headset Instruction

1. Retractable Headband
2. Comfortable Ear Cushion
3. Flexible Microphone
4. In-line Volume and Mute Control
5. USB Connection

1

6. Headset Indicator Light:  
Flashes Green (Headset on working)  
Solid Green (Headset on standby)  
Note: This indicator does not indicate whether the headset is muted.
7. Headset Mute
8. Increases Volume
9. Decreases Volume
10. Microphone Mute
11. Microphone Indicator Light:  
Solid Red (Microphone mute)  
Light Off (Microphone on working)

#### Compatible Device

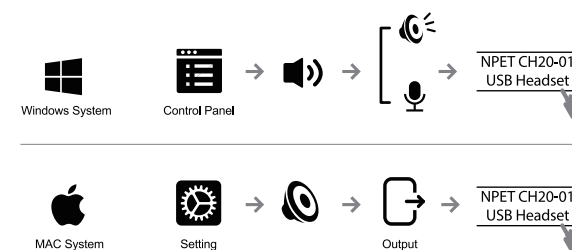


2

#### Specification

Speaker Diameter	Impedance
40mm	32Ω±15%
Sensitivity	Mic Sensitivity
112dB±3dB	-54±3dB
Working Voltage	Frequency Range
5V	20Hz-20KHz
Cable Length	Connectivity
2M	USB Plug

#### Connection Instructions



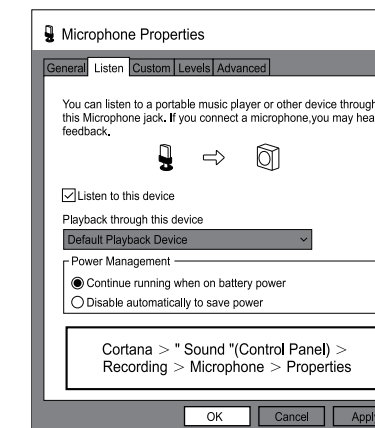
3

#### Win10 Compatibility Setting



#### Listening Mode

On Window: Control Panel->Sound->Recording->Microphone->Listen->Listen to this device->Playback through this device-> Speakers



4

#### Troubleshooting

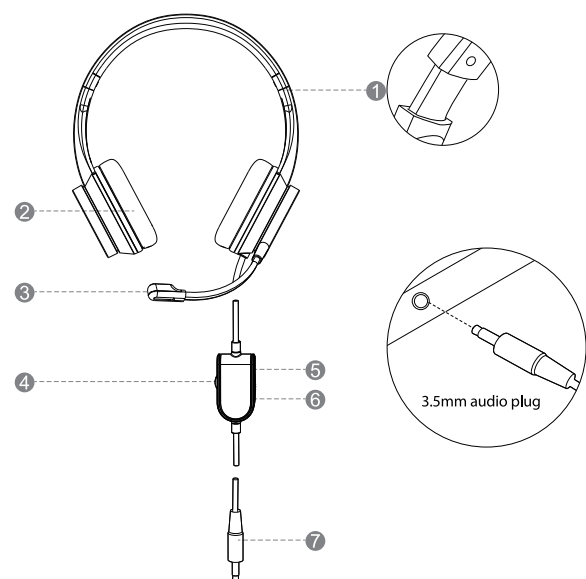
Headset not working

1. Adjust the headset volume on the cable control.
2. Make sure the headset is not on mute.
3. Check the USB cable connection to your computer. Try a different USB port on your computer. Connect directly to your computer. Do not use a USB hub.
4. In your application and operating system, check the volume and microphone settings.
5. Restart your application.
6. Close all applications and make sure the headset is the default input/output device for your operating system.
7. Whether the green indicator light on the headset in-line control is on.

5

**NPET**

### NPET Computer Headset CH21 User Manual

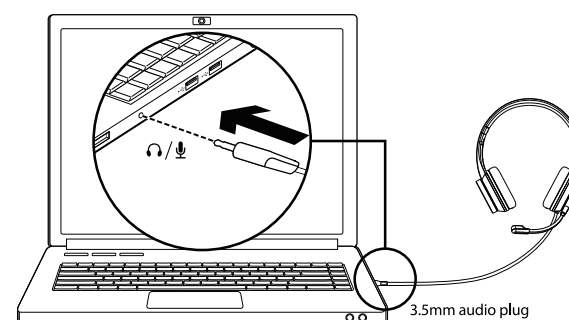


#### Headset Instruction

1. Retractable Headband
2. Comfortable Ear Cushion
3. Flexible Microphone
4. Volume Controls (+/-)
5. Mic ON Button
6. Mic OFF Button
7. 3.5mm Audio Plug

1

#### Compatible Device

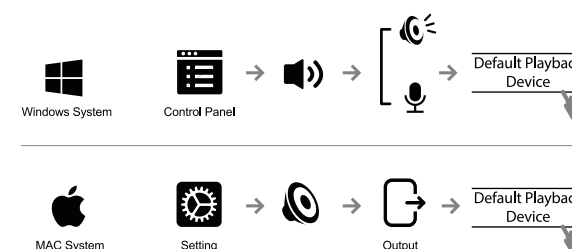


2

#### Specification

Speaker Diameter	Impedance
40mm	32Ω±15%
Sensitivity	Mic Sensitivity
112dB±3dB	-54±3dB
Working Voltage	Frequency Range
5V	20Hz-20KHz
Cable Length	Connectivity
2M	3.5mm Audio Plug

#### Connection Instructions



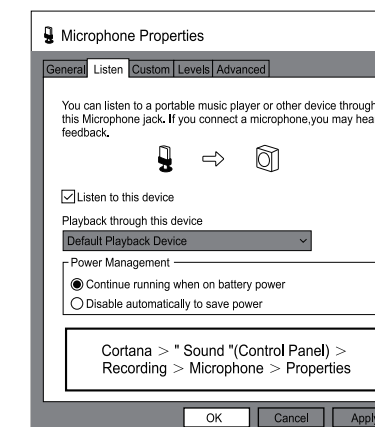
3

#### Win10 Compatibility Setting



#### Listening Mode

On Window: Control Panel->Sound->Recording->Microphone->Listen->Listen to this device->Playback through this device-> Speakers



4

#### Troubleshooting

Headset not working

1. Adjust the headset volume on the cable control.
2. Make sure the headset is not on mute.
3. Check the 3.5mm audio plug connects to your computer. If still does not work, try to plug your phone's 3.5mm audio jack, and use the "recording" function for the test.
4. Connect directly to your computer. In your application and operating system, check the volume.
5. Restart your application.
6. Close all applications and make sure the headset is the default.

5