



**Android based controller**

———— **Y10** ————

**Product Specifications**

Version: Ver.2.0

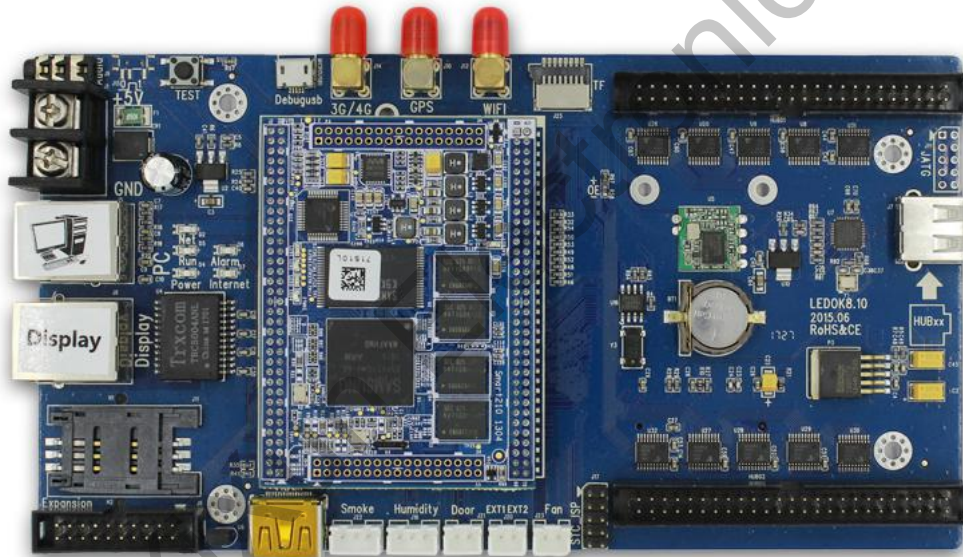
# Update Record

---

Serial Number	Version Number	Description of content updates	Revision Date
1	Ver.1.0	First Version	2019.01.01
2	Ver.1.1	Parameter correction	2017.10.19
3	Ver.1.2	Parameter correction	201910.18
4	Ver.2.0	Add accessories	2020.03.04

# Product Appearance

---



Y10 Control card

# Features

---

Y30 controller is an Android based controller which will work with our new generation receiving card--D90 series, it is a upgraded version of Y10 with a new easier setting software:

1. Support non-Linear editing function;
2. Support video hardware decoding;
3. Support PCI-E 3G module;
4. On-board WIFI module;
5. On load pixel:

A single card carries pixels --256×256;

General version default load --1280×512;

Special high load (model Y20) --1280×1024.

6. HDMI audio/ video output;
7. Fast communication speed, thoroughly solve the speed bottleneck of 3G communication;
8. Support break-point resume and on-board storage to minimum the data flow;
9. Support multi - card cascade, refresh rate can adapt to the load width, brightness adjustable, excellent display;
10. Support AIPS cloud platform to manage, edit, publish and analyze in one place.

# Technical parameters

Type	Intelligent Control Card
Mode	Y10 (Y20)
Resolution	Without cascade: 256×256; After cascade: 1280×512 (Y20 highly 1024 )
3G/4G	Support
WiFi	Support
HUB板	Two standard HUB ports
LED screen type	Full color
On-board Flash	1GB, up to 32G by TF card
Gray level	65536
LED module	Support module with any scan type within 32 scan
Communication	Serial port/ network port/U disk
Audio	Support
GPS	Support and also support fixed point function
Camera	Support
Read back display	Support

<b>content</b>	
<b>Display in schedule</b>	Support
<b>Video format</b>	MP4
<b>Animation format</b>	GIF, SWF
<b>Image format</b>	Bmp, jpg, gif, wmf, ico
<b>Text</b>	Support
<b>Clock</b>	Support digital and simulation clock
<b>Timing</b>	Support timing and count down
<b>Software</b>	Cloud platform AIPS (www.m2mled.net)
<b>Setting software</b>	Easyboard

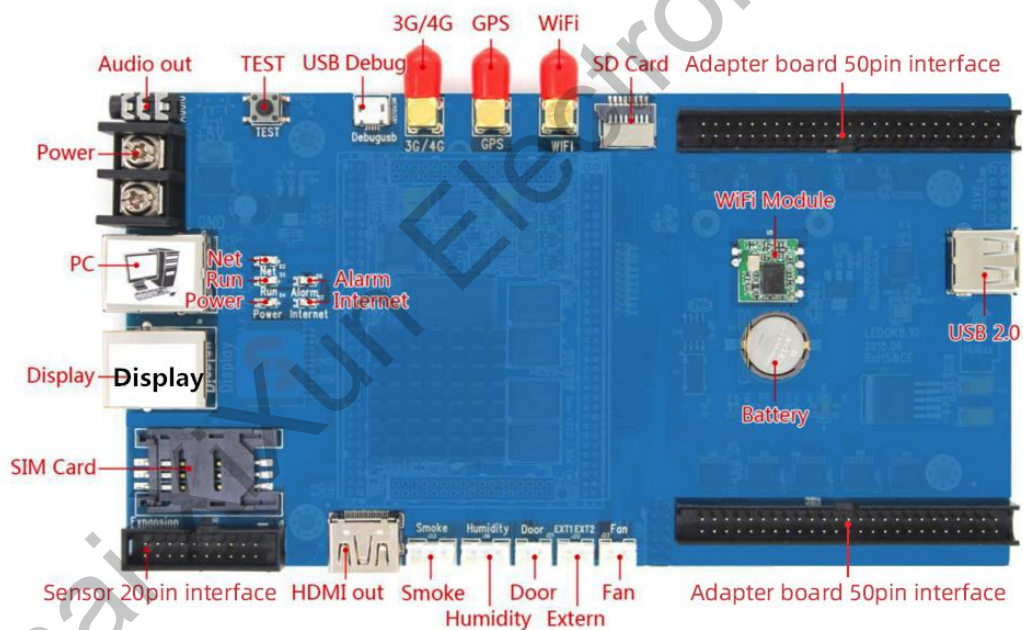
#### Loaded pixels and communication mode definitions

Mode	Mode with box	Communication	Resolution
Y10	Y10-BOX	Standard Ethernet port, U disk, WiFi	1280x512  Default shipping mode
Y10-3G	Y10-3G-BOX	Standard Ethernet port, U disk, WiFi, 3G	
Y10-4G	Y10-4G-BOX	Standard Ethernet port, U disk, WiFi, 3G, 4G	
Y20	Y20-BOX	Standard Ethernet port, U disk, WiFi	1280x1024  Large memory footprint
Y20-3G	Y20-3G-BOX	Standard Ethernet port, U disk, WiFi, 3G	

Y20-4G	Y20-4G-BOX	Standard Ethernet port, U disk, WiFi, 3G, 4G	
--------	------------	---	--

## Interface diagram

Y10 has powerful functions, and the loaded area is much larger than other conventional asynchronous control cards, which leads to the numerous functional interfaces of the control card itself. The following figure is the annotation of various interfaces of Y10. In order to avoid unnecessary interference, the non-annotation area has been blurred:

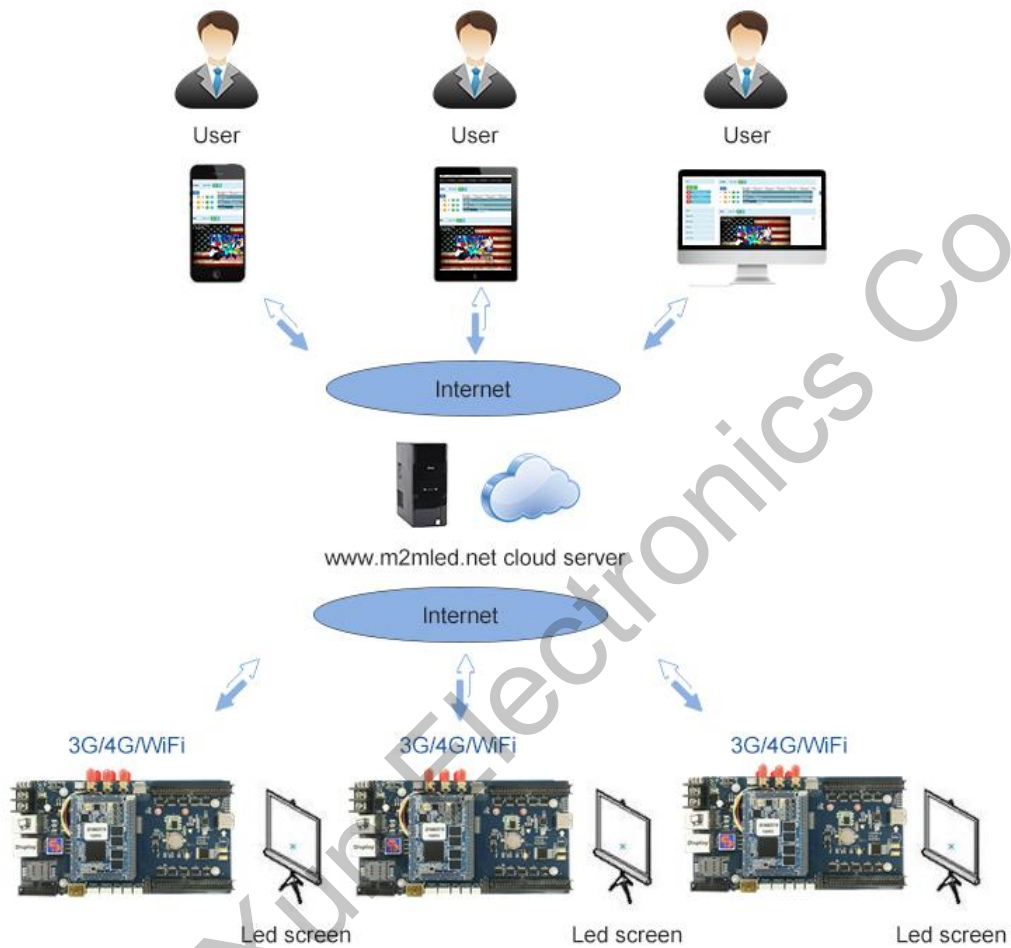


**Y10 interface diagram**



# Topological graph

---

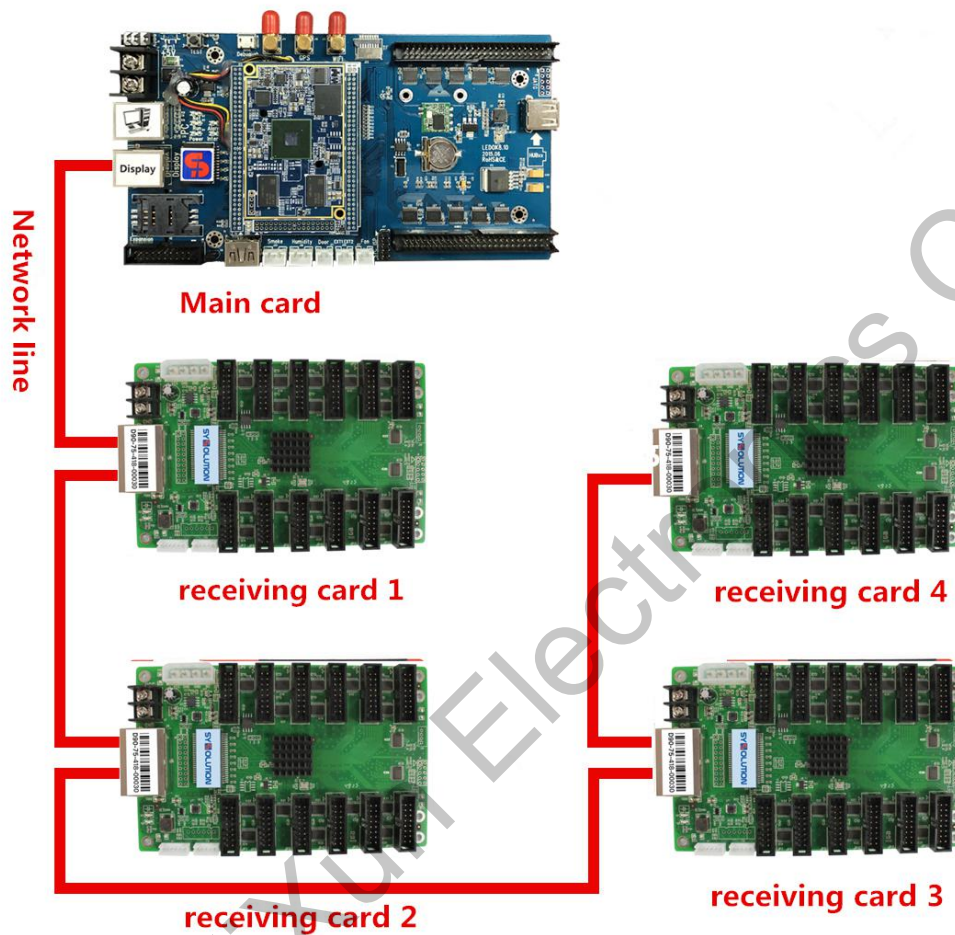


Topological graph



# Connection between Y10 and receiving cards

---

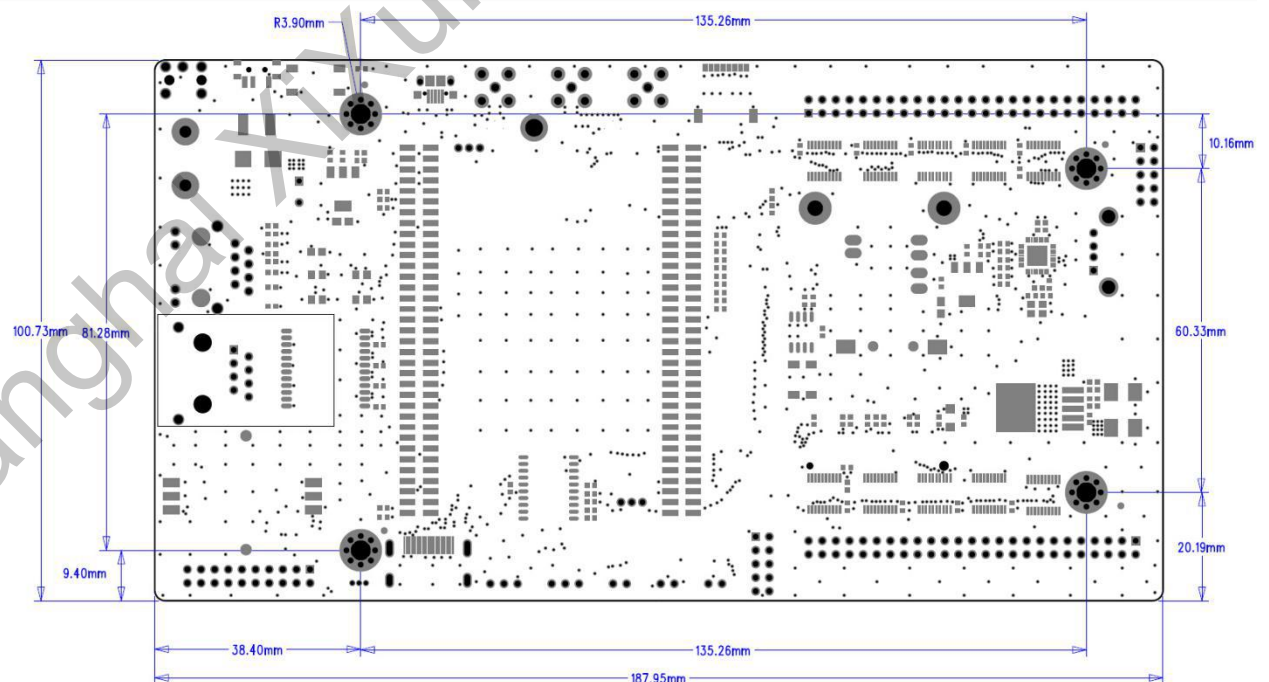


Connection between Y10 and receiving cards

# Operation condition

Operation condition	
Working voltage (V)	4.5 ~ 6
Maximum working current (A)	1
Maximum working consumption(W)_	5
Working temperature(°C)	- 25 ~ + 80
Dimension (mm)	17.5 (length) × 9.6 (width) × 2.5 (highly)
Weight(g)	138

## Y10 Dimension



# Accessories

---

Standard accessories	Size/Quantity
Wifi Sucker antenna	3m*1
3G Sucker antenna	3m*1

(If you need other accessories, please place an order)

Optional accessories	Accessories features
Multi-function card R36	Optional Brightness probe RL1、Temperature probe RT1、 Humidity probe RH1
Lora Synchronization module RS3	Optional Brightness probe RL1、Temperature probe RT1、 Humidity probe RH1、 433 Synchronous sucker antenna 4m

**Matched Accessories (Optional, additional models are available according to the order)**

## Cautions

---

1. Strictly prohibited to plug SIM card.
2. Strictly prohibited to plug PCIE module.
3. Strictly prohibited to plug HUB controller



4. Strictly Prohibited to Plug Antenna.

5. Try not to touch the chip and pin on the controller to prevent static electricity damage.

Shanghai Xixun Electronics Co., Ltd