

P4 Indoor SMD2121 256*128mm LED Module

Specification

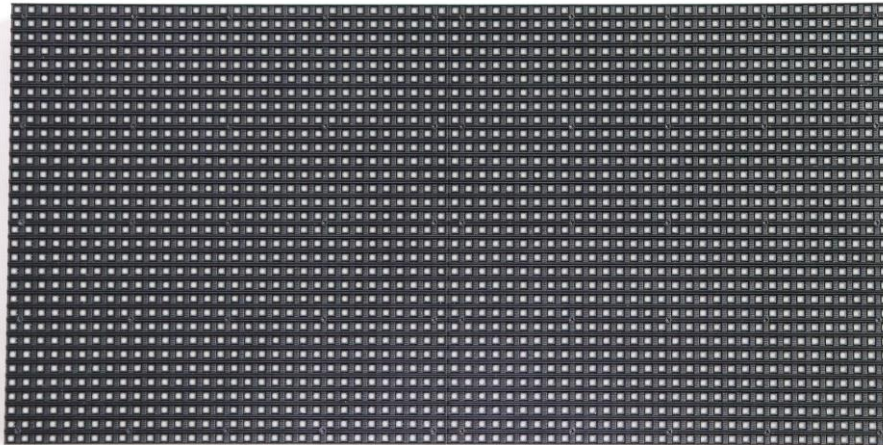
Model No.: **P4-I16S-SMD2121-64x32**

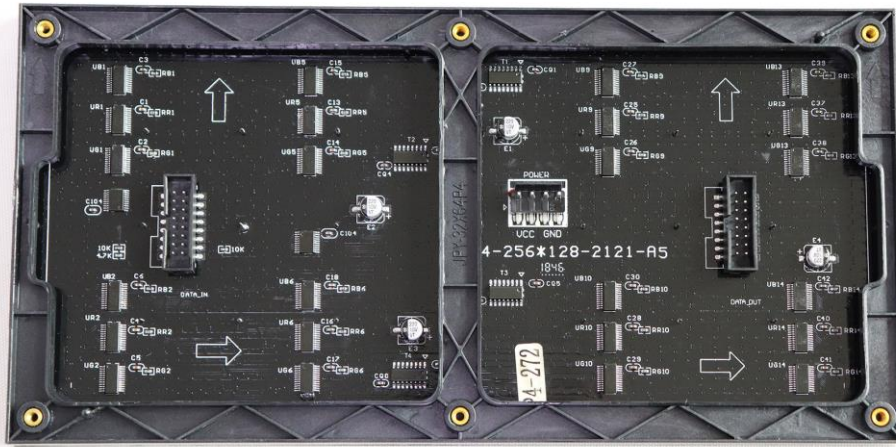
LED Lamp Specification



Color	Package	Intensity	Viewing Angle	Wavelength	Testing Conditions
Red	SMD2121	80-104mcd	120°	618-623nm	25°C,15mA
Green		270-338mcd	120°	515-519nm	25°C,10mA
Blue		31-39mcd	120°	465-469nm	25°C,5mA

Module Photo





Module Parameter

Pixel Pitch	4mm
Pixel Configuration	SMD2121
Density	62,500 pixels/m ²
Module Resolution	64pixel(L) * 32pixel(H)
Module Dimension	256mm(L) * 128mm(H) * 18mm(D)
Driving Mode	Constant current, 1/16 duty
Module Mask	Pure black mask--high contrast screen

Electricity Parameter

Optical Ratings

Brightness	≥1,000 cd/m ²
Viewing Angle	120 °(Horizontal); 120 °(Vertical)
Best Viewing Distance	≥4m
Gray Grade	14 bits
Display Color	4.4 trillion colors
Brightness Adjustment	100 grades by software or automatically by sensor
Max. Power Consumption	19 W

Control System

Frame Frequency	≥60Hz
Refresh Frequency	≥1,920Hz
Input Signal	Composite Video, S-video, DVI, HDMI, SDI, HD-SDI
Control Distance	100m(Ethernet cable); 20KM(optical fiber cable)
Support VGA Mode	800*600, 1024*768, 1280*1024, 1600*1200

Color Temperature	5000—9300 adjustable
Brightness Correction	Pixel by pixel, module by module, cabinet by cabinet
Reliability	
Working Temperature	-20~+60 ℃
Storage Temperature	-30~+70 ℃
Working Humidity	10%~90% RH
Lifetime	100,000 hours
MTBF	5000 hours
Continuous Operating Time	≥72 hours
Protection Grade	IP31
Out-of-Control Pixel Rate	≤0.01%

Package

