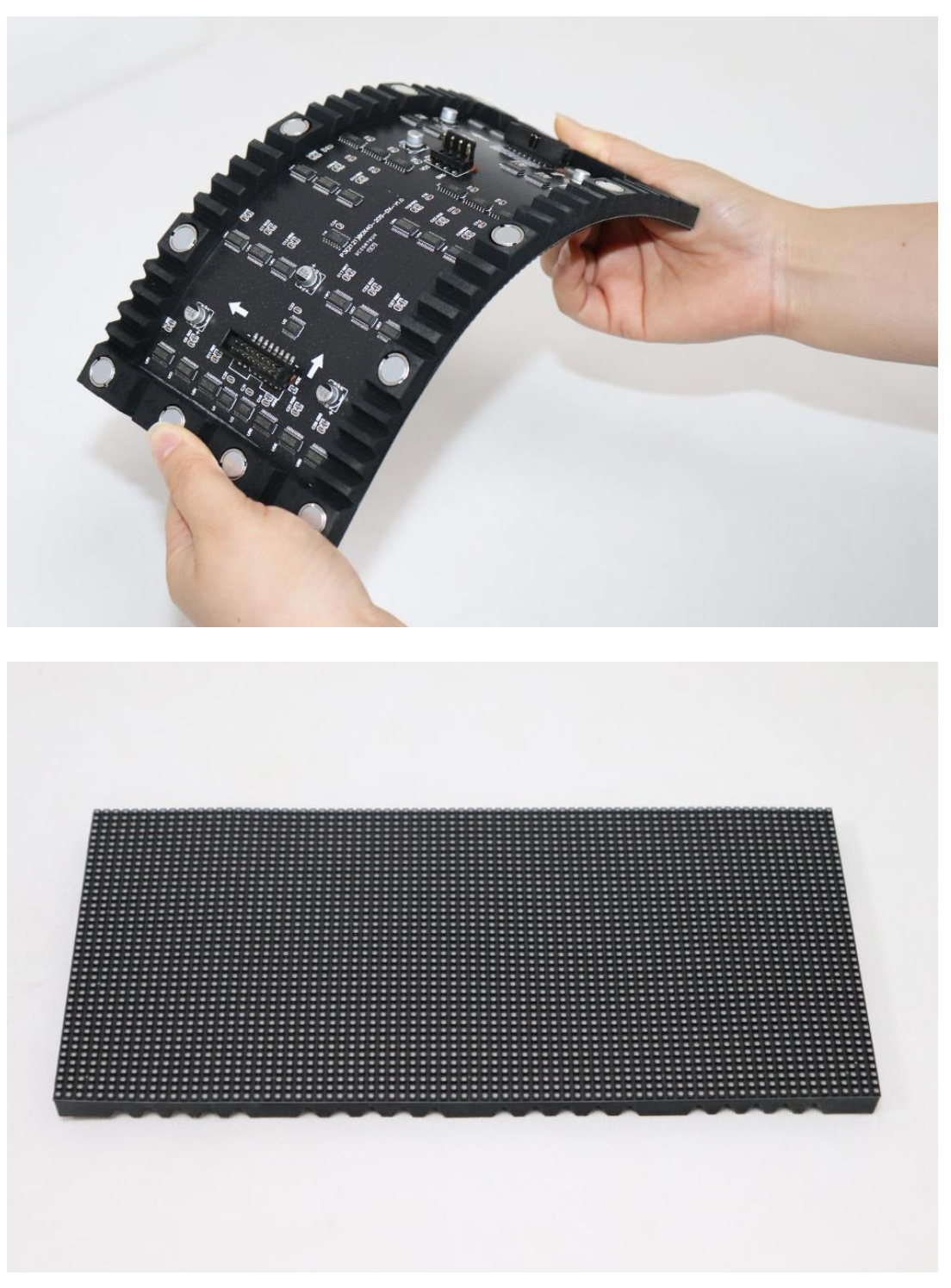


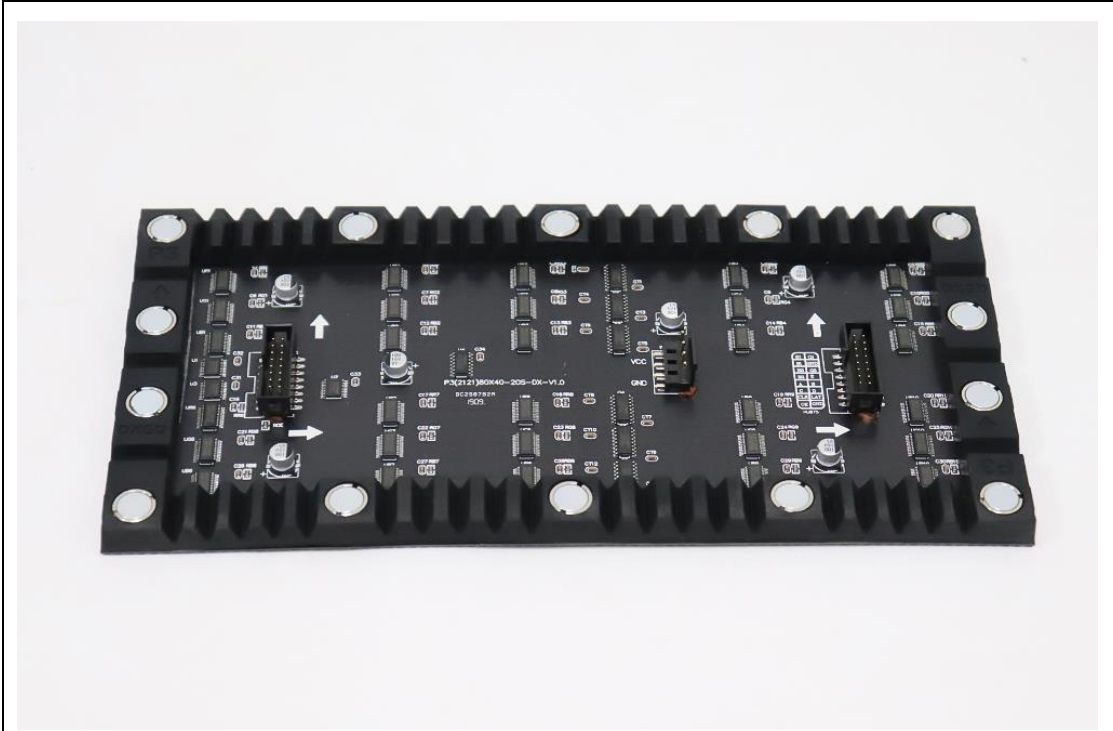
## P3 240x120mm Indoor Flexible Soft LED Display Module

### Specification

Model No.: **P3-ISF20S-SMD2121-80x40**

LED Lamp Specification					
					
Color	Package	Intensity	Viewing Angle	Wavelength	Testing Conditions
Red	SMD2121	70-100mcd	110°/110°	620-625nm	25°C,20mA
Green		120-200mcd	110°/110°	515-530nm	25°C,10mA
Blue		30-40mcd	110°/110°	465-475nm	25°C,5mA
Module Photo					
					





### Module Parameter

Pixel Pitch	3mm
Pixel Configuration	SMD2121
Density	111,111 pixels/m <sup>2</sup>
Module Resolution	80pixel(L) * 40pixel(H)
Module Dimension	240mm(L) * 120mm(H) * 8.5mm(D)
Driving Mode	Constant current, 1/20 duty

### Electricity Parameter

#### Optical Ratings

Brightness	≥1,000 cd/m <sup>2</sup>
Viewing Angle	140 °(Horizontal); 140 °(Vertical)
Best Viewing Distance	≥3m
Gray Grade	14 bits
Display Color	4.4 trillion colors
Brightness Adjustment	100 grades by software or automatically by sensor
Max. Power Consumption	10 W

#### Control System

Frame Frequency	≥60Hz
Refresh Frequency	≥1920Hz
Input Signal	Composite Video, S-video, DVI, HDMI, SDI, HD-SDI
Control Distance	100m(Ethernet cable); 20KM(optical fiber cable)
Support VGA Mode	800*600, 1024*768, 1280*1024, 1600*1200
Color Temperature	5000—9300 adjustable

Tel: +86-755-23190947

Website: <https://www.eagerled.com>

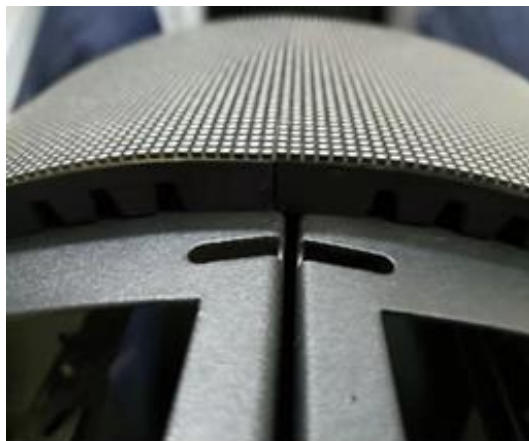
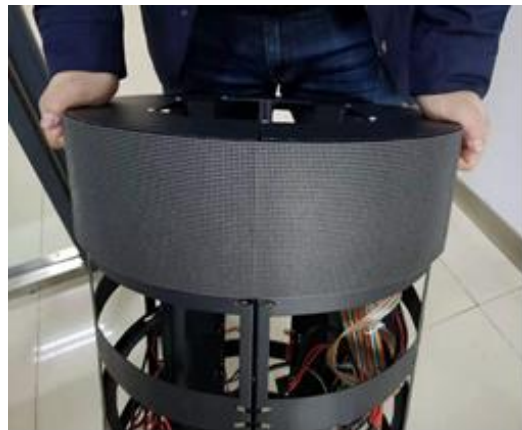
E-mail: [manager@eagerled.com](mailto:manager@eagerled.com)

Address: Building C, Zhongyu High-Tech Industrial Park, Heshuikou, Matian, Guangming, Shenzhen, China



Brightness Correction	Pixel by pixel, module by module, cabinet by cabinet
<b>Reliability</b>	
Working Temperature	-20~+60 ℃
Storage Temperature	-30~+70 ℃
Working Humidity	10%~90% RH
Lifetime	100,000 hours
MTBF	5000 hours
Continuous Operating Time	≥72 hours
Protection Grade	IP31
Out-of-Control Pixel Rate	≤0.01%

**Assembly diagram**



Application

