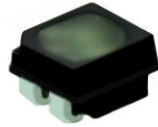


## P2 240x120mm Indoor Flexible Soft LED Display Module

### Specification

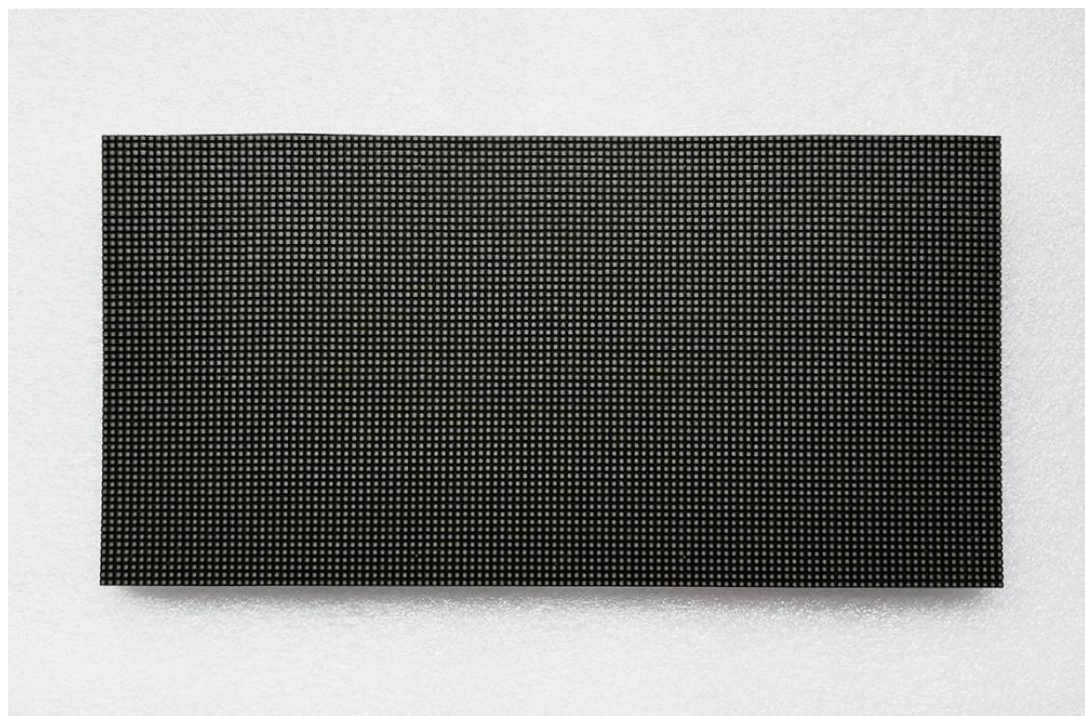
Model No.: **P2-ISF30S-SMD1515-120x60**

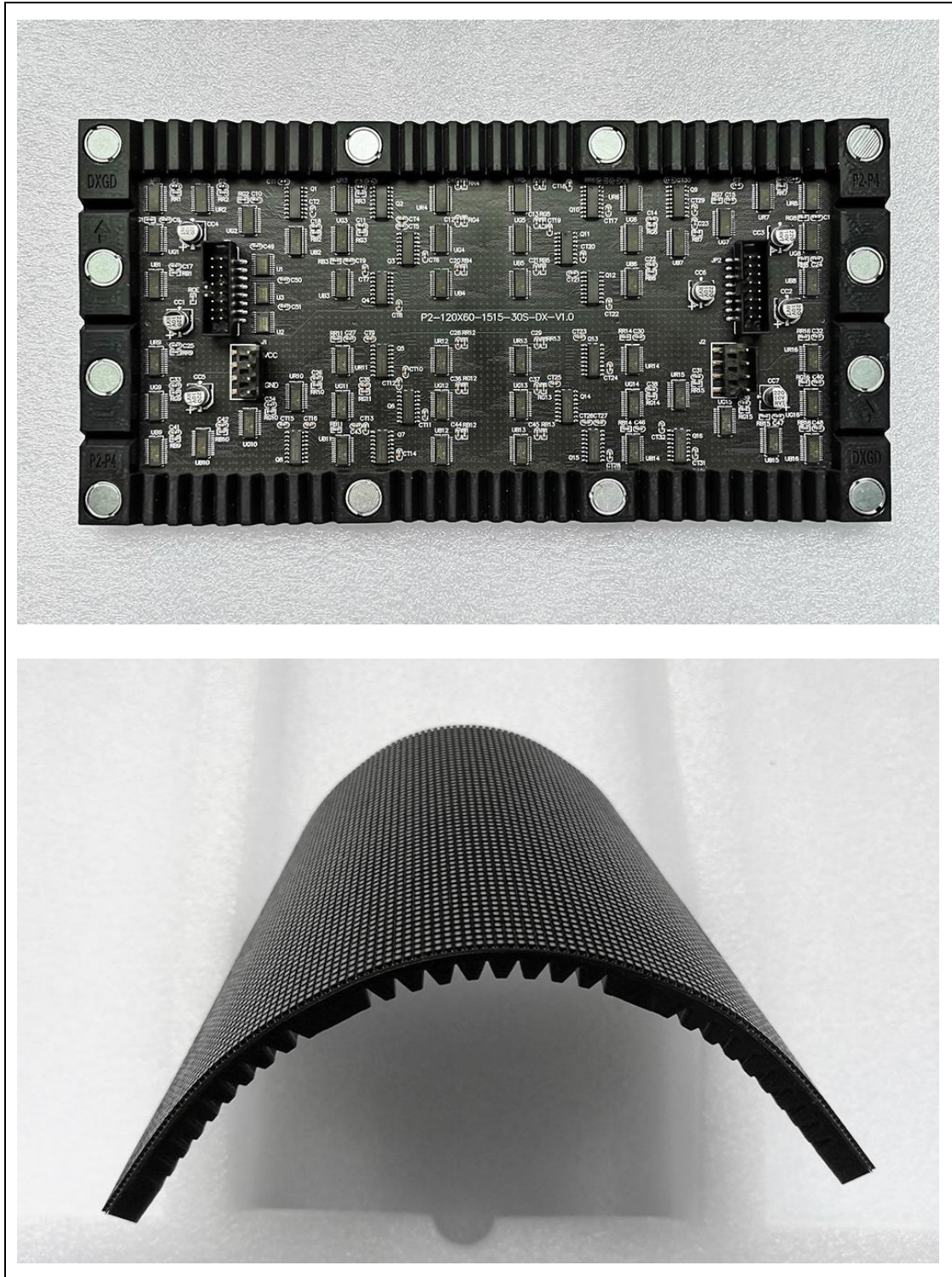
#### LED Lamp Specification



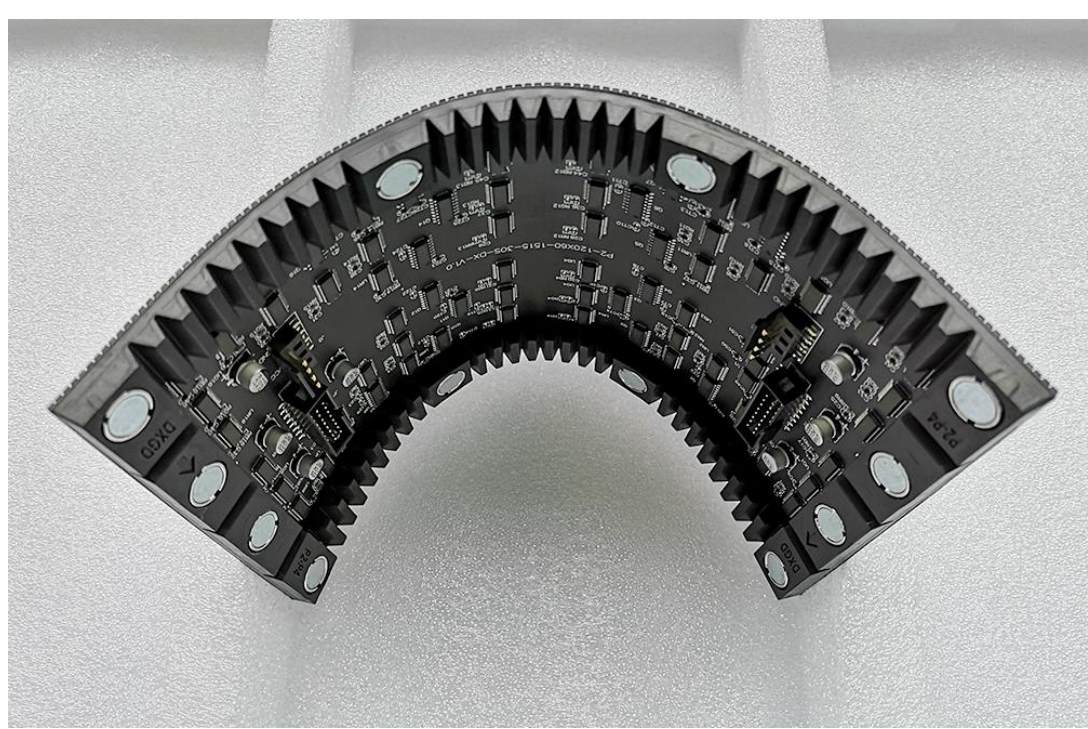
Color	Package	Intensity	Viewing Angle	Wavelength	Testing Conditions
Red	SMD1515	38-50mcd	110°/110°	618-623nm	25°C, 8mA
Green		150-195mcd	110°/110°	519-524nm	25°C, 5mA
Blue		19-25mcd	110°/110°	467-471nm	25°C, 3mA

#### Module Photo









### Module Parameter

Pixel Pitch	2mm
Pixel Configuration	SMD1515
Density	250,000pixels/m <sup>2</sup>
Module Resolution	120pixel(L) * 60pixel(H)
Module Dimension	240mm(L) * 120mm(H) * 8.5mm(D)
Driving Mode	Constant current, 1/30 duty

### Electricity Parameter

#### Optical Ratings

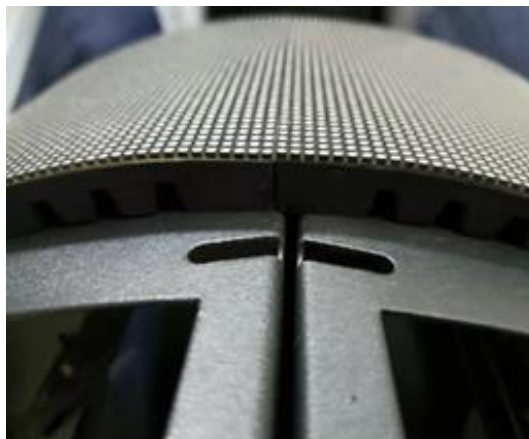
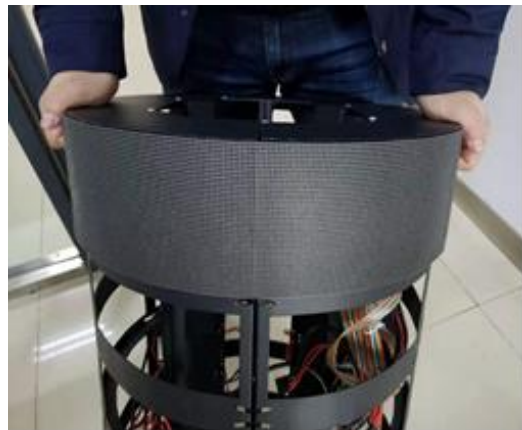
Brightness	≥1,000 cd/m <sup>2</sup>
Viewing Angle	140 °(Horizontal); 140 °(Vertical)
Best Viewing Distance	≥2m
Gray Grade	14 bits
Display Color	4.4 trillion colors
Brightness Adjustment	100 grades by software or automatically by sensor
Max. Power Consumption	15 W

#### Control System

Frame Frequency	≥60Hz
Refresh Frequency	≥3840Hz
Input Signal	Composite Video, S-video, DVI, HDMI, SDI, HD-SDI
Control Distance	100m(Ethernet cable); 20KM(optical fiber cable)
Support VGA Mode	800*600, 1024*768, 1280*1024, 1600*1200
Color Temperature	5000—9300 adjustable

Brightness Correction	Pixel by pixel, module by module, cabinet by cabinet
<b>Reliability</b>	
Working Temperature	-20~+60 ℃
Storage Temperature	-30~+70 ℃
Working Humidity	10%~90% RH
Lifetime	100,000 hours
MTBF	5000 hours
Continuous Operating Time	≥72 hours
Protection Grade	IP31
Out-of-Control Pixel Rate	≤0.01%

**Assembly diagram**





Application

