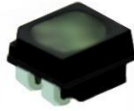


P1.875 240x120mm Indoor Flexible Soft LED Display

Module Specification

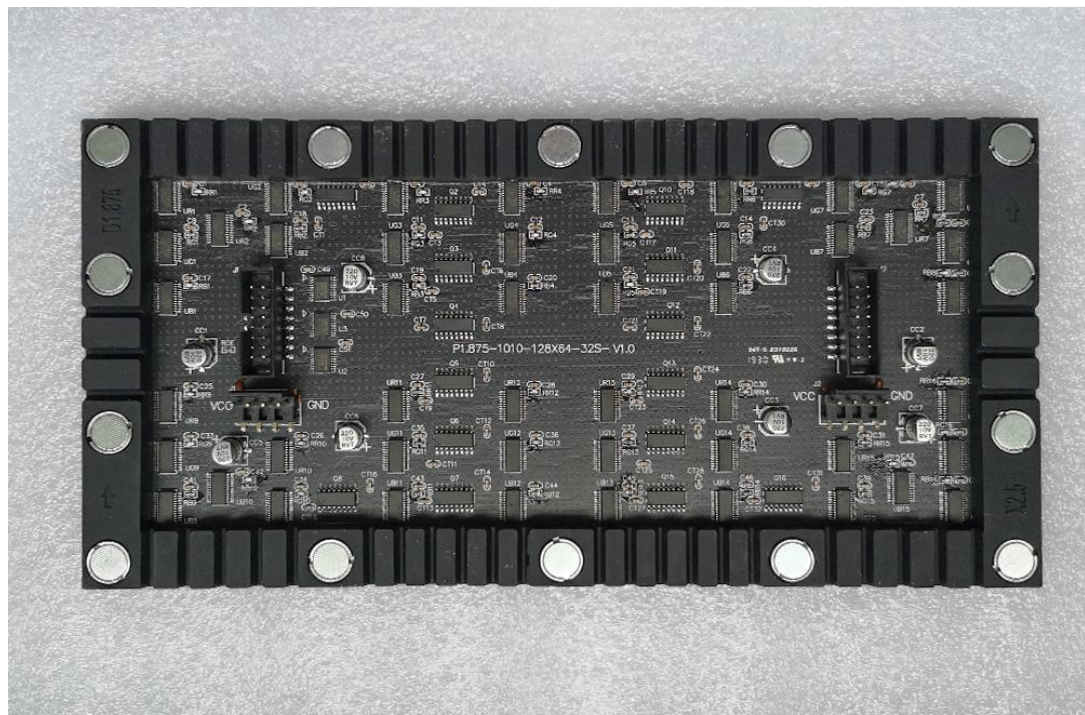
Model No.: **P1.875-ISF32S-SMD1515-128x64**

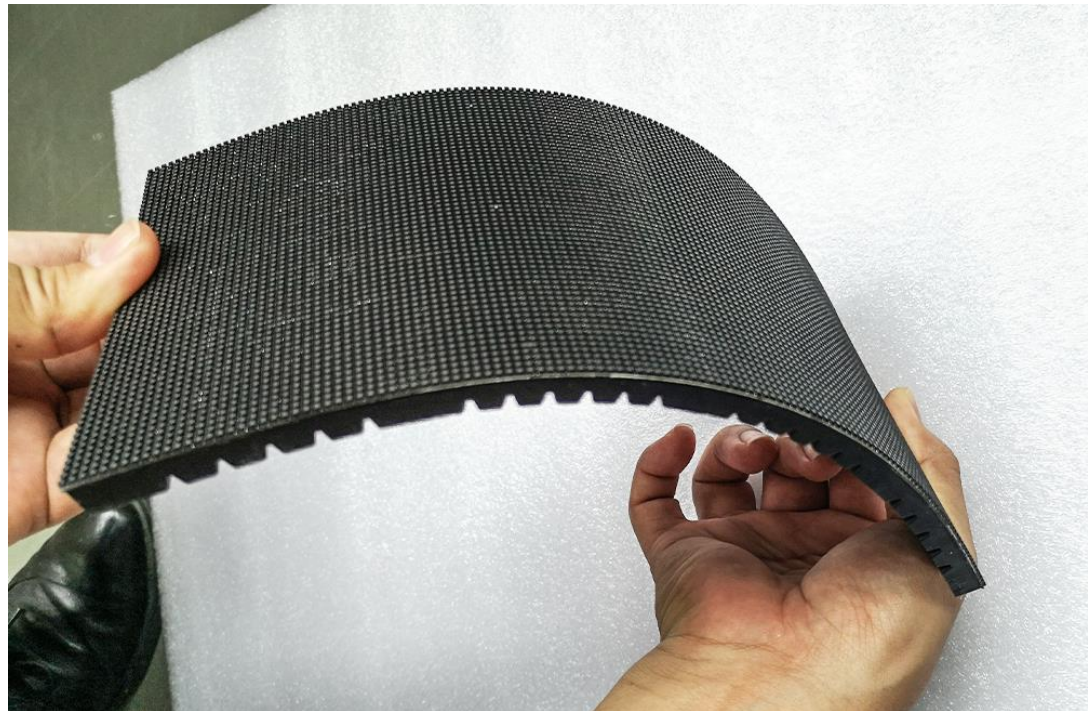
LED Lamp Specification

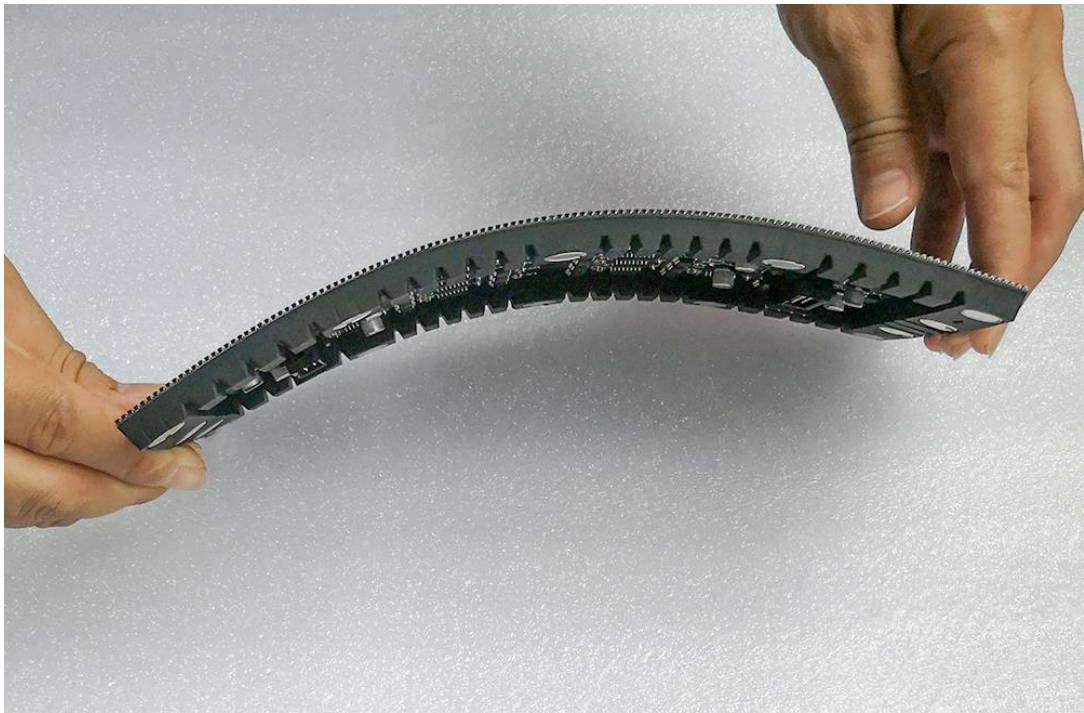
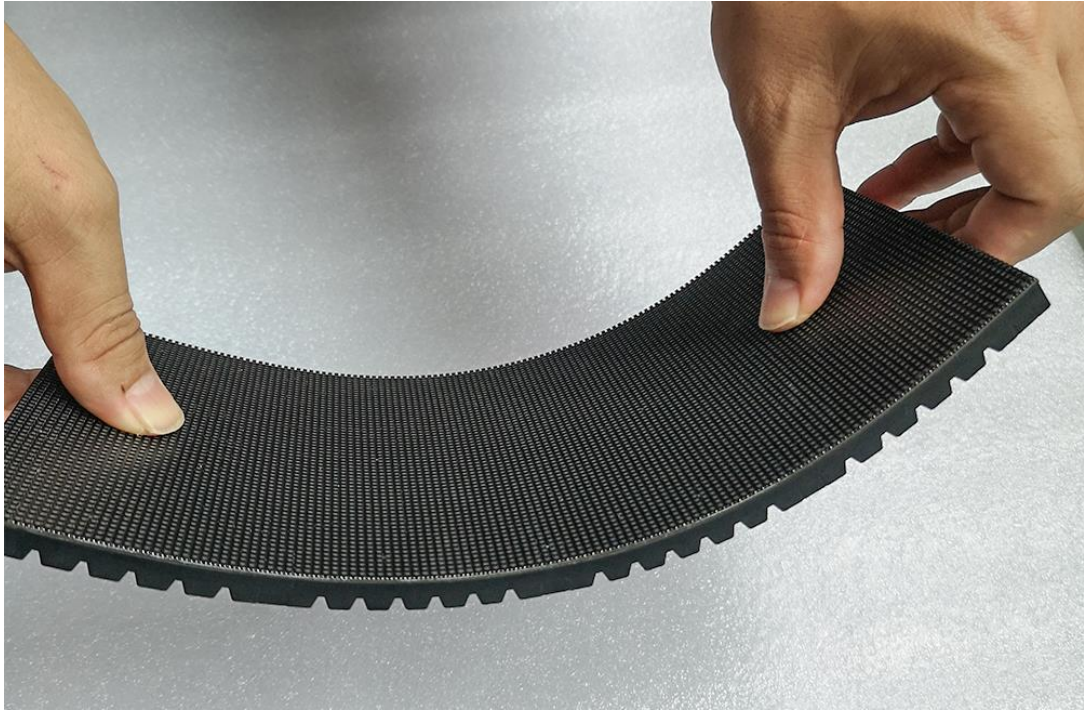


Color	Package	Intensity	Viewing Angle	Wavelength	Testing Conditions
Red	SMD1515	38-50mcd	110°	618-623nm	25°C,8mA
Green		150-195mcd	110°	519-523nm	25°C,5mA
Blue		19-25mcd	110°	467-471nm	25°C,3mA

Module Photo







Module Parameter

Pixel Pitch	1.875mm
Pixel Configuration	SMD1515
Density	284,444 pixels/m ²
Module Resolution	128pixel(L) * 64pixel(H)
Module Dimension	240mm(L) * 120mm(H) * 8.5mm(D)
Driving Mode	Constant current, 1/32 duty

Tel: +86-755-23190947

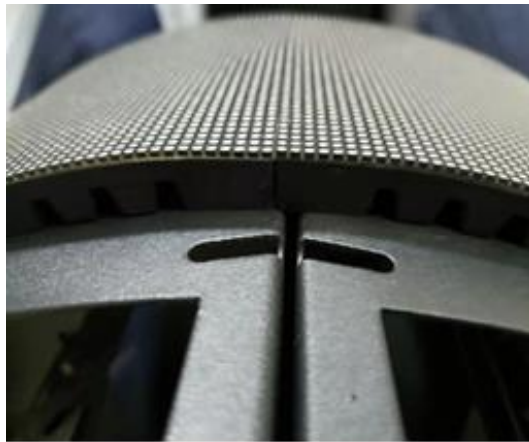
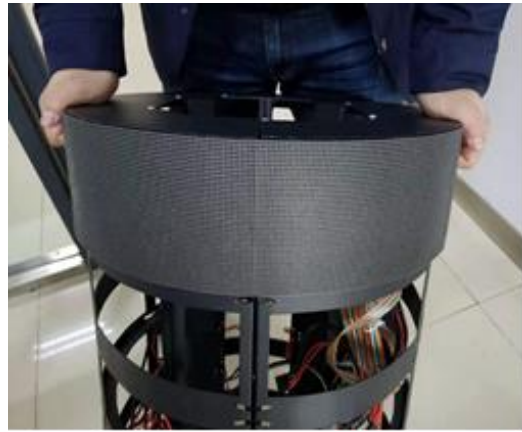
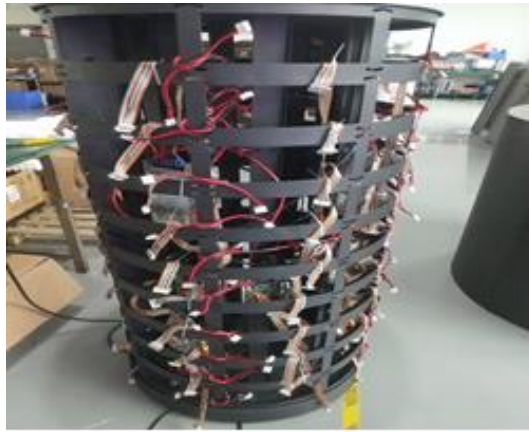
Website: <https://www.eagerled.com>

E-mail: manager@eagerled.com

Address: Building C, Zhongyu High-Tech Industrial Park, Heshuikou, Matian, Guangming, Shenzhen, China

Electricity Parameter	
Optical Ratings	
Brightness	≥1,000 cd/m ²
Viewing Angle	140°(Horizontal); 140°(Vertical)
Best Viewing Distance	≥1.8m
Gray Grade	14 bits
Display Color	4.4 trillion colors
Brightness Adjustment	100 grades by software or automatically by sensor
Max. Power Consumption	15 W
Control System	
Frame Frequency	≥60Hz
Refresh Frequency	≥3840Hz
Input Signal	Composite Video, S-video, DVI, HDMI, SDI, HD-SDI
Control Distance	100m(Ethernet cable); 20KM(optical fiber cable)
Support VGA Mode	800*600, 1024*768, 1280*1024, 1600*1200
Color Temperature	5000—9300 adjustable
Brightness Correction	Pixel by pixel, module by module, cabinet by cabinet
Reliability	
Working Temperature	-20~+60 °C
Storage Temperature	-30~+70 °C
Working Humidity	10%~90% RH
Lifetime	100,000 hours
MTBF	5000 hours
Continuous Operating Time	≥72 hours
Protection Grade	IP31
Out-of-Control Pixel Rate	≤0.01%

Assembly diagram



Application

