

# Specification

## TS921

V1.0

Jan 2018

**Summarize:** \_\_\_\_\_

**TS921 is a sending card for full color led screen, and supports single, double as well. What's more, it supports 4K video source input, and supports 3840 pixels in width at most, and 1920 pixels at most in height.**

Official website: [www.linsn.com](http://www.linsn.com)

Add: Floor 15&16, Jiajiahao Business Building, No. 10168, Shennan Blvd,

Nanshan District, Shenzhen

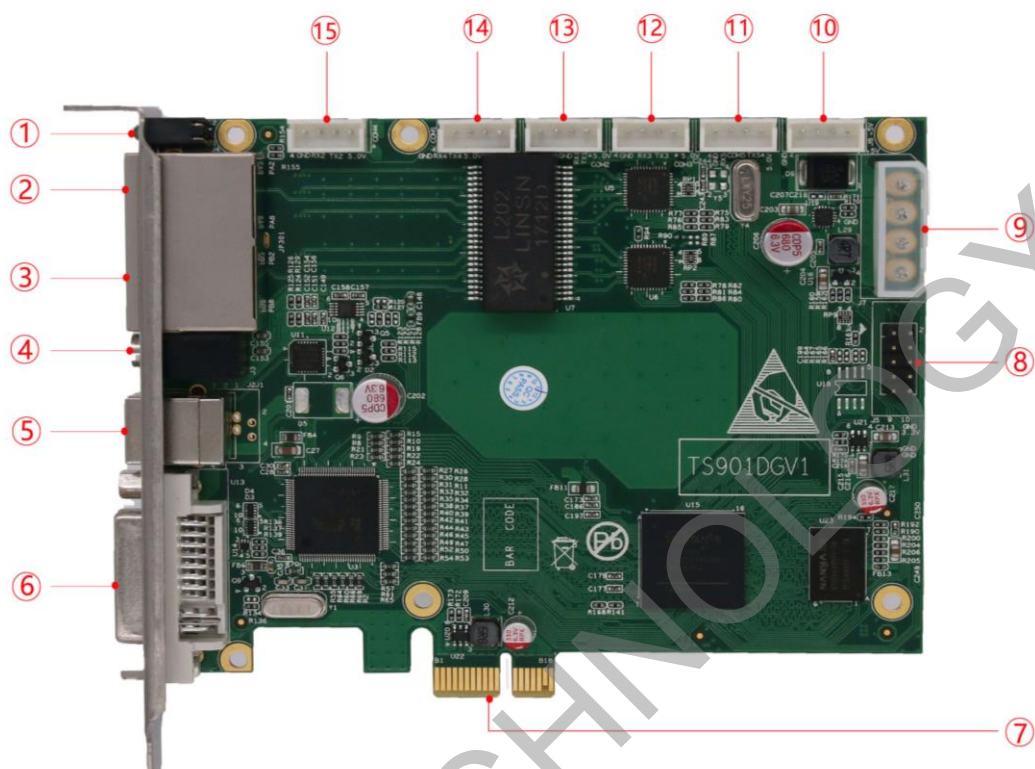
Tel: +86-0755-33985098

**Features:** 

---

- 1) One DVI video signal input;
- 2) Supports 4K video source input;
- 3) Supports reading back the RCG file;
- 4) Supports broadcasting the RCG file;
- 5) Supports broadcasting the CON file;
- 6) Supports 12-bit/10-bit/8-bit video input;
- 7) Supports 16-bit grayscale display;
- 8) One audio input;
- 9) Using PCI-E 1X port, the computer compatibility will be better;
- 10) Double port output, supports 2048X640, 1280X1024 video source and so on.

## Ports introduction:

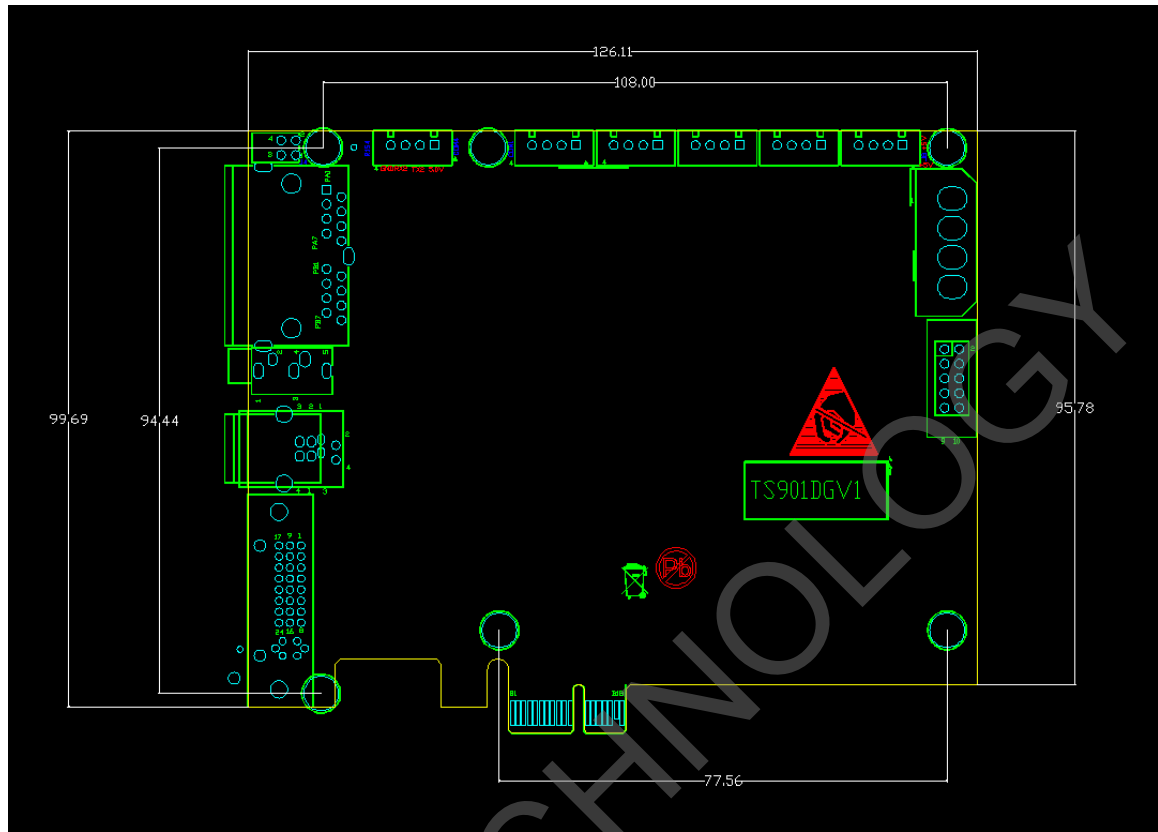


①	Power and signal indicator	⑨	D type power port (5V/2A)
②	RJ45 (U port)	⑩	Square power port
③	RJ45 (D port)	⑪	Reserved
④	3.5mm audio input port	⑫	LCD connector
⑤	USB port	⑬	Reserved
⑥	DVI input port	⑭	Cascade input port
⑦	PCI-E x1	⑮	Cascade output port
⑧	Internal use		

Official website: [www.linsn.com](http://www.linsn.com)

Add: Floor 15&16, Jiajiahao Business Building, No. 10168, Shennan Blvd,  
Nanshan District, Shenzhen  
Tel: +86-0755-33985098

**Dimensions:** \_\_\_\_\_



**Working conditions:** \_\_\_\_\_

Rated voltage (V)	5	maximum	5.5	minimum	4.5
Rated current (A)	0.50	maximum	0.57	minimum	0.46
Rated power consumption(W)	2.5	maximum	3.1	minimum	2.1
Working temperature (°C)	-20°C ~ 75°C				
Working humidity (%)	0% ~ 95%				

**END**