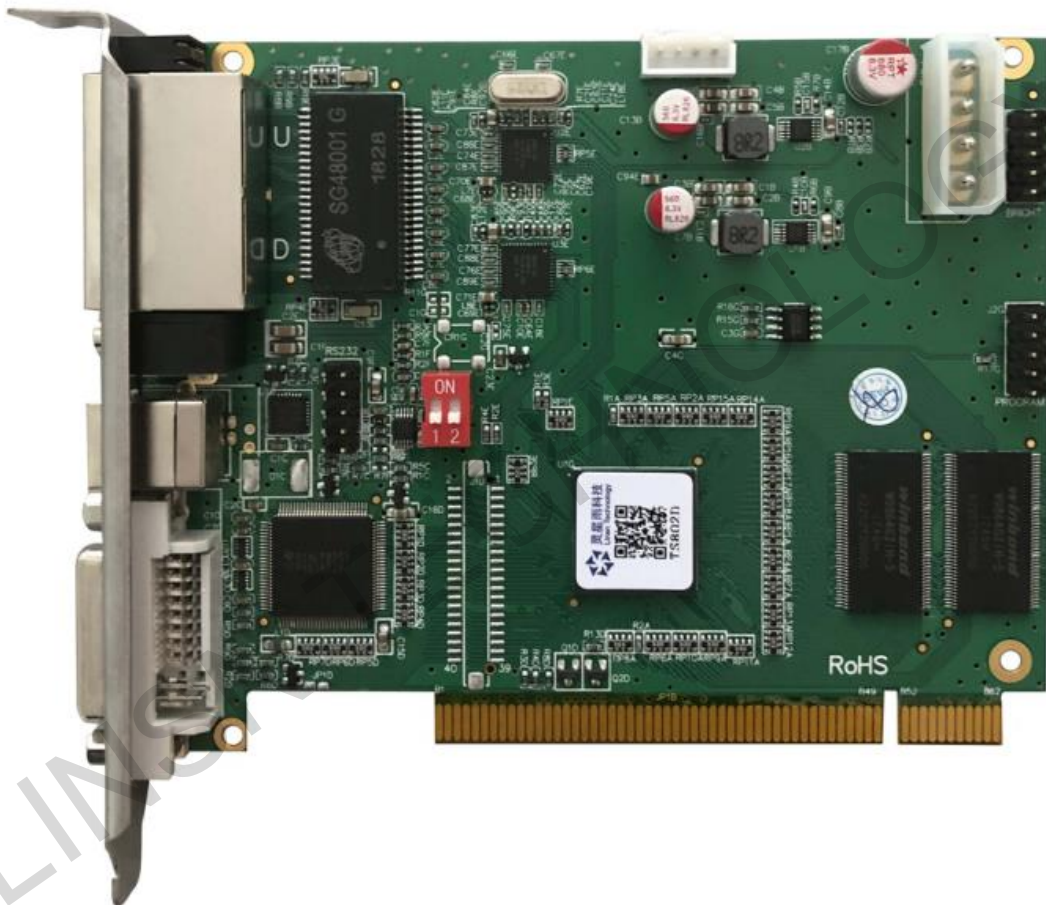


## Sending card

### TS802D

V1.2  
DEC 2018

#### 1. Feature



TS802 is a sending card for full color led screen, and supports single and double color led screen as well.

One card can support 1310720 pixels; supports 4032 pixels in

Official website: [www.linsn.com](http://www.linsn.com)

Add: Floor 15&16, Jiajiahao Business Building, No. 10168, Shennan Blvd,  
Nanshan District, Shenzhen

Tel: +86-0755-86183590/ 4008836968

width at most; and 2048 pixels at most in height.

It has below features:

- 1) One DVI video signal input;
- 2) One Audio signal input;
- 3) Sending card is set by USB; can be cascaded to drive a larger screen, up to 4 cards cascaded;
- 4) Two network outputs; single port maximum support 655360 pixels;
- 5) Supports adjusting brightness manually (require working with outer box) ; three scales can be set:16-grade, 32-grade and 64-grade;
- 6) Supports 60Hz and 30Hz output mode;

## 2. Capability

60Hz mode (using two ports)	30Hz mode (using two ports)
2048 × 640	4032 × 512
1920 × 672	3840 × 544
1792 × 720	3584 × 576
1600 × 800	3392 × 608
1472 × 880	3200 × 640

Official website: [www.linsn.com](http://www.linsn.com)

Add: Floor 15&16, Jiajiahao Business Building, No. 10168, Shennan Blvd,  
Nanshan District, Shenzhen

Tel: +86-0755-86183590/ 4008836968

1344 × 960	3072 × 672
1280 × 1024	2880 × 704
1024 × 1280 (require supporting by graphics card )	2560 × 800
832 × 1280 ( require supporting by graphics card )	2368 × 864
640 × 1280 ( require supporting by graphics card )	2048 × 1024

**Note,**

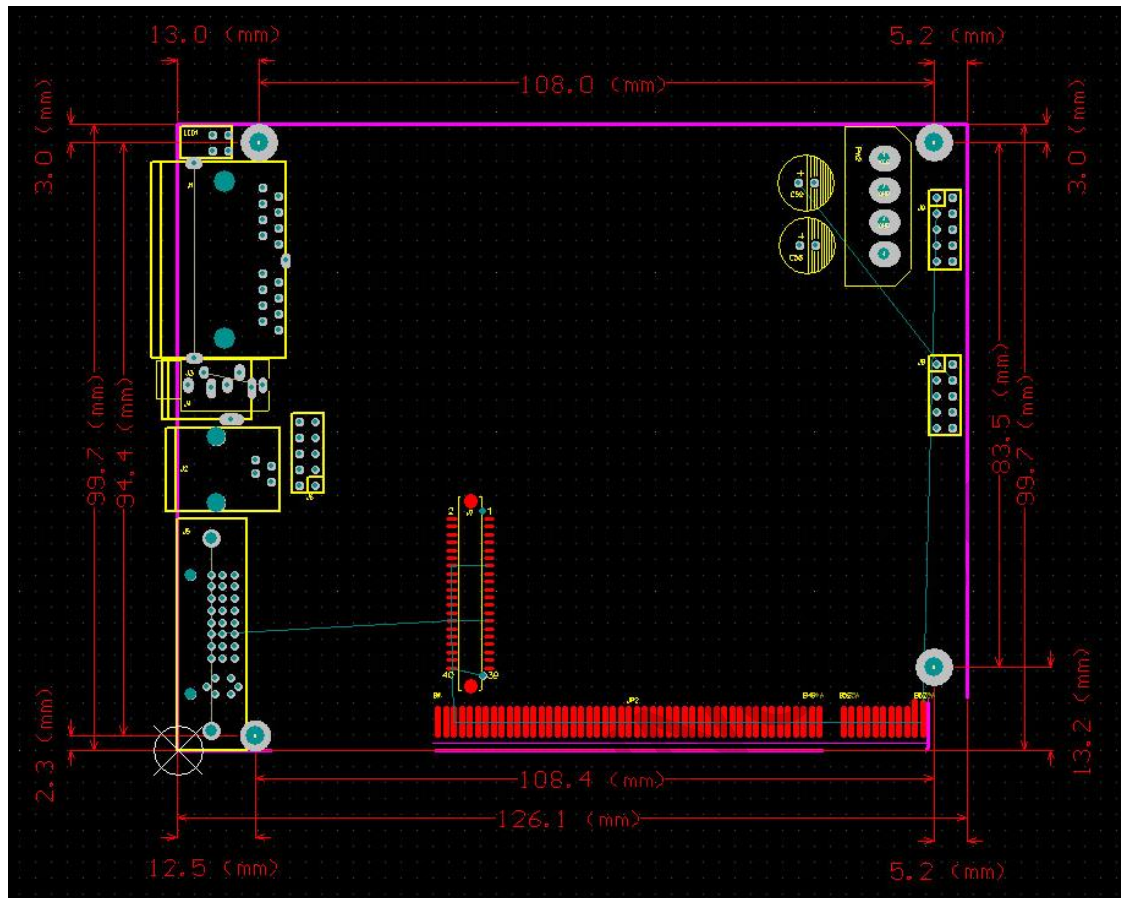
1. The capabilities above need to be supported by the capability of the graphics card (or video processor); for ultra-long or ultra-high resolution, please use GTX1050(one of the graphics card type) or use other graphics card with same or higher configuration)
2. The output of one port of TS802 cannot exceed 655360 pixels (which is half of 1310720 pixels).

Official website: [www.linsn.com](http://www.linsn.com)

Add: Floor 15&16, Jiajiahao Business Building, No. 10168, Shennan Blvd,  
Nanshan District, Shenzhen

Tel: +86-0755-86183590/ 4008836968

### 3. Dimensions and hold position



LINSN TECHNOLOGY

Official website: [www.linsn.com](http://www.linsn.com)

Add: Floor 15&16, Jiajiahao Business Building, No. 10168, Shennan Blvd,  
Nanshan District, Shenzhen

Tel: +86-0755-86183590/ 4008836968

#### 4. Working conditions

Rated voltage (V)	5	maximu m	5.5	minimu m	4.5
Rated current (A)	0.50	maximu m	0.57	minimu m	0.46
Rated power consumption (W)	2.5	maximu m	3.1	minimu m	2.1
Working temperature (°C)	-20°C ~ 75°C				
Working humidity (%)	0% ~ 95%				

**END**

Official website: [www.linsn.com](http://www.linsn.com)

Add: Floor 15&16, Jiajahao Business Building, No. 10168, Shennan Blvd,  
Nanshan District, Shenzhen

Tel: +86-0755-86183590/ 4008836968