



CREATE, PROGRAM & PLAY!

LED KIT

# Instruction Manual



# Welcome to Botzees LED Kit!

Botzees LED Kit is an add-on pack that comes with a 11\*8 LED lattice screen. The LED board can be programmed through our FREE Botzees app to display fun rolling texts and colorful patterned designs. Use our special blocks, the main control block, and the sensor from the previous Botzees package together with the LED board to create two new pre-designed robots and discover more fun.

## Product information

Product name: Botzees LED Kit

Model number: 83105

The package contains: 74 pieces

Suitable age range: 4+ years

Pai Technology Inc.

520 Broadway, Second Floor, Santa Monica, CA 90401

Manufacturer:

Pai Technology Limited

Room H, 18/F, Ning Jin Centre, 7 Cheng Yip Street, Kwun Tong, Kowloon, Hongkong.

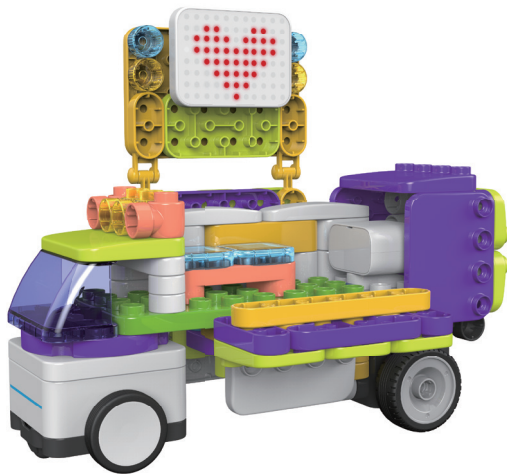


**WARNING:**

CHOKING HAZARD—Small parts.  
Not for children under 3 yrs.



One kit  
Two robot characters



Party bus: Buster

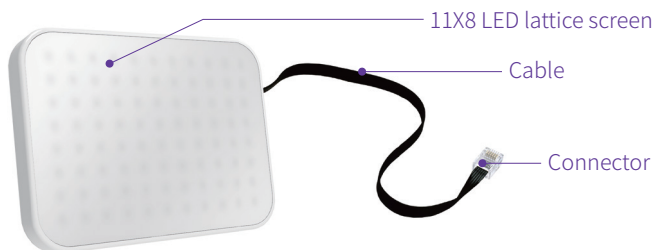


Rocket: Apollo

# What's in the Box

## 1. LED lattice screen:

LED lattice screen is a 11\*8 LED lattice screen that can display eight-colored patterned designs.



## 2. LED lattice screen connection:

The connector of the LED screen plug into the connection port located on the back of the main control block.



## Included Pieces



x2



x2



x4



x1



x2



x6



x4



x1



x2



x1



x1



x1



x1



x3



x1



x2



x4



x1



x2



x2



x3



x1



x2



x2



x2



x2



x1



x5



x2



x2



x1



x1



x1



x1



x2



x2



LED board x1

**Note!** The product doesn't contain a power adapter.

# Set-Up

## 1. Download the App

Search “Botzees” on your App Store.  
Download and install the app.

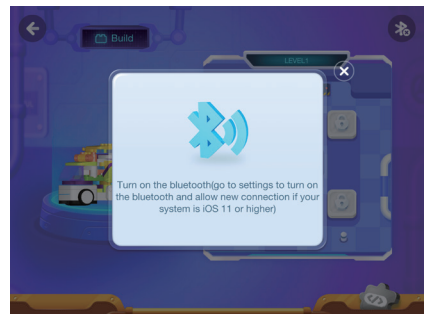
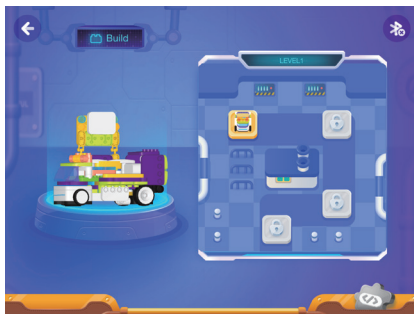
Compatible with:

iOS10+  
iPhone6p and above  
ipad5/ipad air2/ipad mini3/4  
ipad pro9.7/12.9  
Android os 6 and above

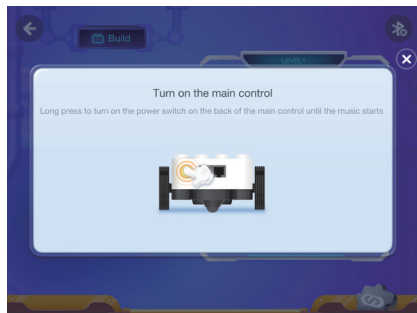


## 2. Connect to Bluetooth

- 1 Open the app and choose the character you want to play with. After building, click on the connection icon at the top right. The icon is grey when the Bluetooth is not connected.
- 2 Be sure that Bluetooth is activated on the electronic device you are using.




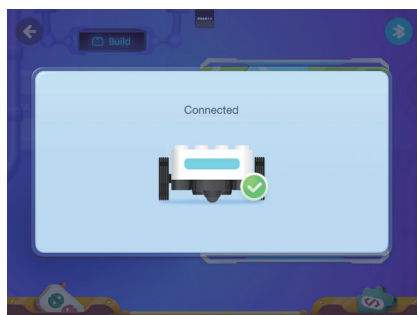
- 3 Turn on the power on the back of main control block.



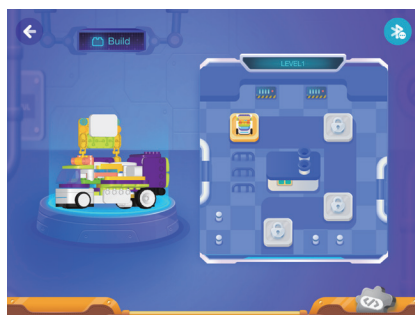
- 4 Keep your electronic device within 20cm of the main control block to connect.



- 5 When  appears, then you have successfully connected the device with main control block.

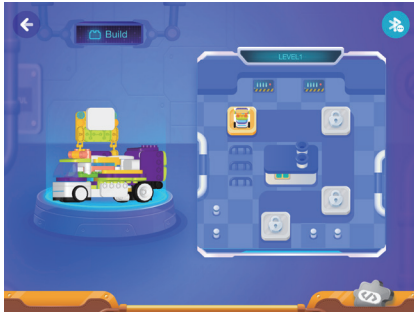


- 6 The connection icon at the top right turns blue after a successful connection.

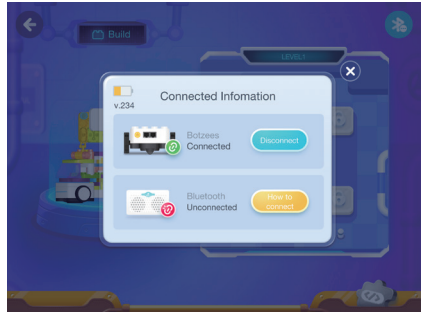


### 3. Connect the Bluetooth audio

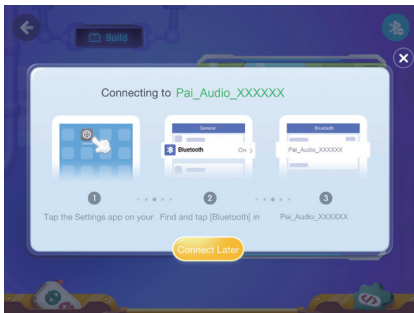
1 Click on the connection icon at the top right.



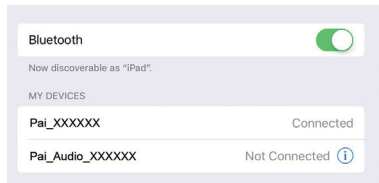
2 Click on "How to connect".



3 Go to "Settings" on your electronic device and tap "Bluetooth."



4 The electronic device will search the Audio bluetooth automatically. Then click on "Pai\_Audio\_XXXXXX" to connect.



5 Device status will show "connected" on the page when successfully connected.





## Limited Warranty information

### Who is covered:

This warranty is extended only to the original end-use purchaser or the person receiving the product as a gift, and shall not be extended to any other person or transferee.

### What is covered/For how long:

Unless a different warranty period is stated in the Owner's guide provided with your Pai product, for a period of under 1 year for anything that may be incorporated into this product from the date of retail purchase by the original end-use purchaser, Pai warrants that this product, when delivered to you in new condition, in original packaging, from a Pai authorized reseller and used in normal conditions, is free from any defects in manufacturing, materials and workmanship.

### What is not covered:

This warranty does not cover defects resulting from improper or unreasonable use or maintenance; failure to follow operating instructions; accident; excess moisture; insects; lightning; power surges; connections to improper voltage supply; unauthorized alteration or modification of original condition; damages caused by inadequate packing or shipping procedures; loss of damage to or corruption of stored data; damage caused by use with non-Pai products; product that requires modification or adaptation to enable it to operate in any country other than the country for which it was designed, manufactured, approved and/or authorized, or repair of products damaged by these modifications; and products purchased from unauthorized dealers.

### What we will do:

During the warranty period, we will, at our sole option, repair or replace (using new or refurbished replacement parts) any defective parts within a reasonable period of time and free of charge.

### What you must do to obtain Limited Warranty Service:

Return product, with proof of purchase from an authorized dealer. Please contact Pai Technology at [customerservice@pai.technology](mailto:customerservice@pai.technology) for specific return and shipping instructions.

### Other conditions:

The provisions of this limited warranty are in lieu of any other warranty, whether expressed or implied, written or oral, including any warranty of merchantability or fitness for a particular purpose. Pai corporation's

maximum liability shall not exceed the actual purchase price paid by you for the product. In no event shall Pai be liable for loss of, damage to, or corruption of stored data, or for special, incidental, consequential, or indirect damage howsoever caused including, without limitation, the replacement of equipment and property, and any costs of recovering, programming, or reproducing any program or data stored in or used with your Pai product.

This warranty is void if the label bearing the serial number has been removed or defaced.

Other legal rights:

This limited warranty gives you specific legal rights, and you also may have other rights that vary from state to state or country to country. Some places do not allow limitations on implied warranties or the exclusion or limitation of incidental or consequential damages, so the above limitations or exclusions may not apply to you.

Regulatory Conformance Hereby, PAI TECHNOLOGY LIMITED declares that this device is in compliance with the essential requirements and other relevant provisions of Directive 2014/53/EU.

## Taking care of your product

1. The product is not suitable for children under 3 years old.
2. Do not dismantle the LED lattice screen block.
3. Do not squeeze or apply excessive pressure on the product surface, otherwise it may cause product deformation or damage.
4. Do not place the product in or around heating equipment or Ignition sources, or anywhere the humidity is higher than 60%.
5. Clean the product with a soft, dry cloth. The product should not come into contact with water.

©2019 All rights reserved. iPhone, iPad, iPad Mini and iPad Pro are trademarks of Apple Inc. Google Play is a trademark of Google Inc.

meets **ASTM F963, CPSIA, EN71 & ROHS** related standard.

**Made in China**





[www.pai.technology](http://www.pai.technology)