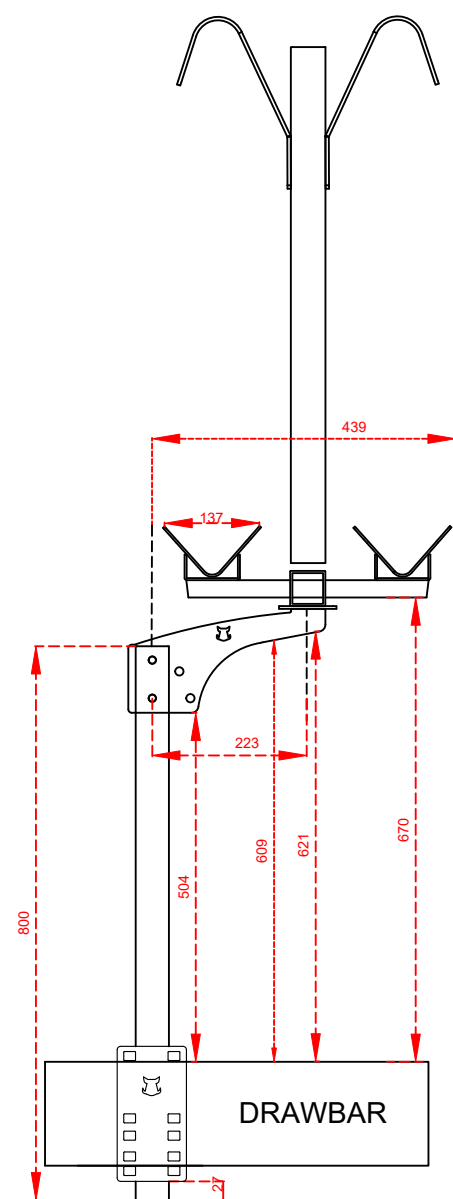


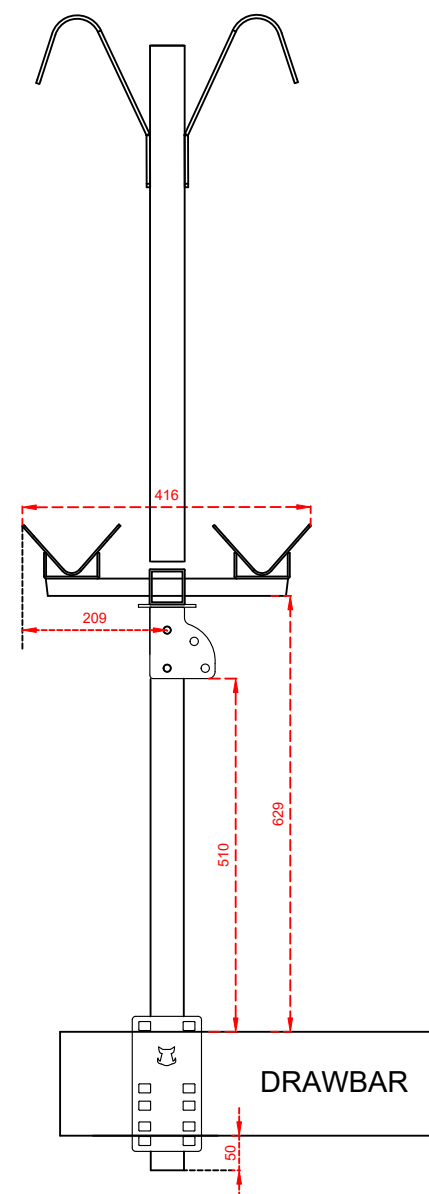


FITTING GUIDE FOR FREEDOM 2 BIKE CARAVAN RACK



Offset Tilt Bracket

- 1 - 504mm - Minimum Height Clearance
(to bottom of offset bracket from)
- 2 - 670mm - Maximum Height Clearance
(to underside of bike rack)
- 3 - 439mm - Maximum Depth
(centre of support pole to most outward facing part of bike rack.)
- 4 - 223mm - Offset Amount
(offset from centre of support pole to centre of bike rack)



Tilt Bracket

- 1 - 510mm - Minimum Height Clearance
(to bottom of offset bracket)
- 2 - 629mm - Maximum Height Clearance
(to underside of bike rack)
- 3 - 209mm - Maximum Depth
(centre of support pole to most outward facing part of bike rack.)
- 4 - 0mm - Offset Amount
(offset from centre of support pole to centre of bike rack)

NOTE:

1) This guide is based on a 150 x 50mm drawbar. You can increase height measurements when using a different drawbar size. For example, for a 130mm high drawbar, you will not use as much of vertical support bar when bolting to drawbar, so you can add 20mm to each of these height related measurements.

2) Our standard vertical support poles are 800 mm in height

3) We recommend 50mm protrusion of vertical support bar under the drawbar for bolting to.