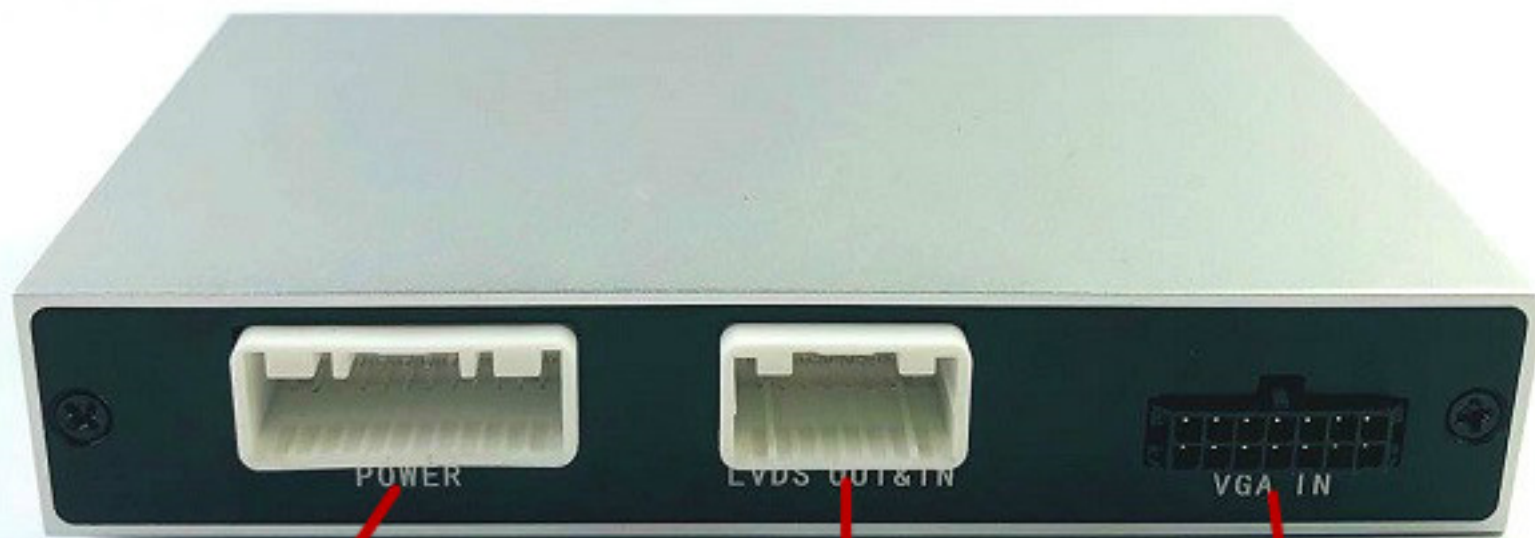


INSTALLATION MANUAL

Model No.	Car Item	Year & System	Features
CP-PCM 3.1	Cayenne:10-16 Palamera:10-16 Cayenne:10-16 911:10-16 978:10-16 MACAN:10-16	2010-2016	Wireless /wired Carplay+Android auto+ Front camera Input+rear camera input



Power Plug

LVDS IN/OUT

VGA IN

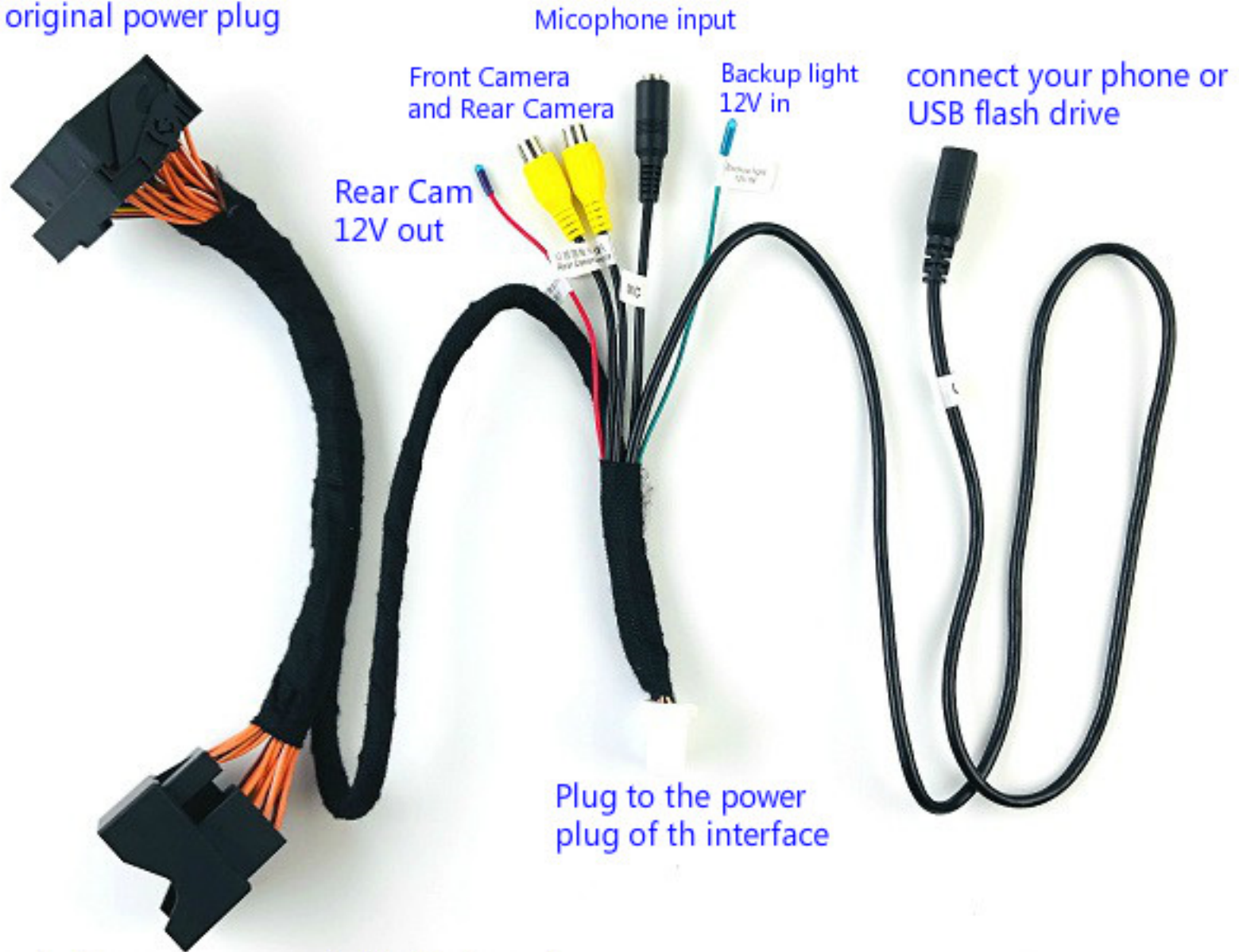


REST

Antenna

DIP

Plug to the power connector of head unit, after take out the original power plug



Micophone input

Front Camera and Rear Camera

Backup light 12V in

connect your phone or USB flash drive

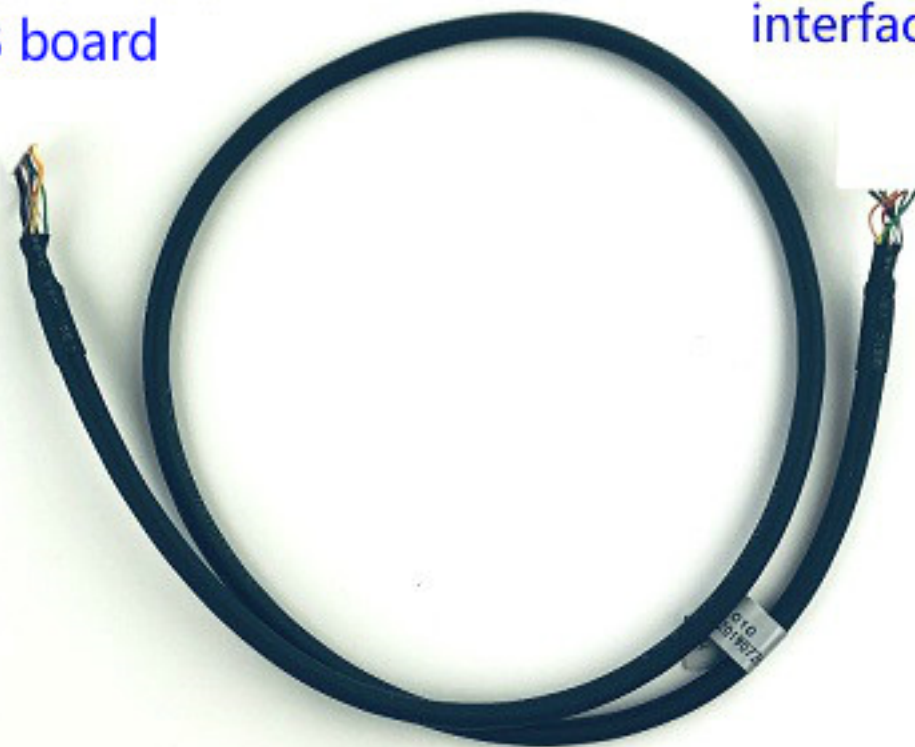
Rear Cam 12V out

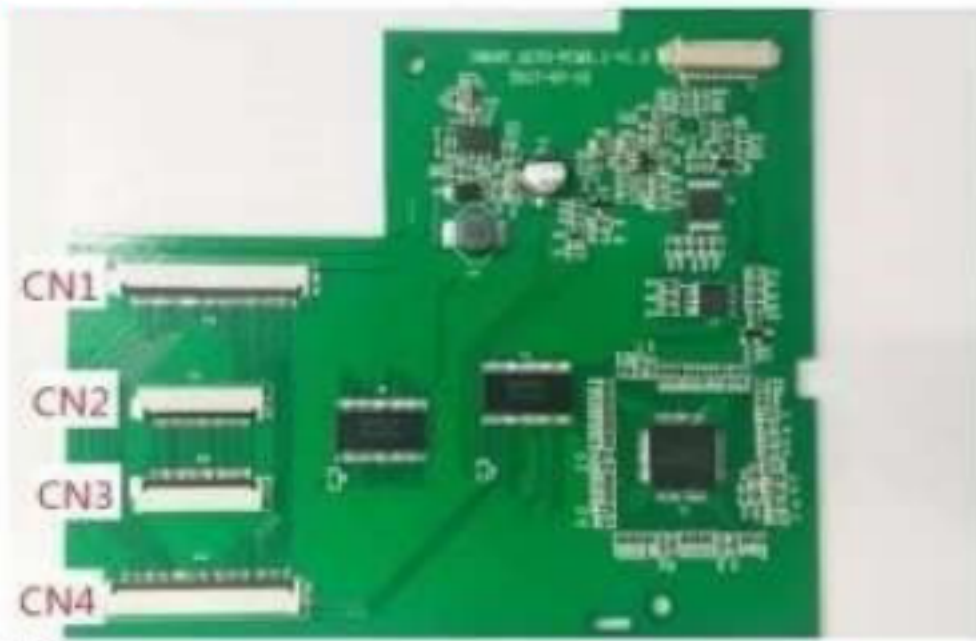
Plug to the power plug of th interface

Plug to the power connector that take out from the original plug of the head unit

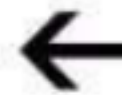
Connect to the video
convert PCB board

Connect to the
interface LVDS plug





Video convert PCB board

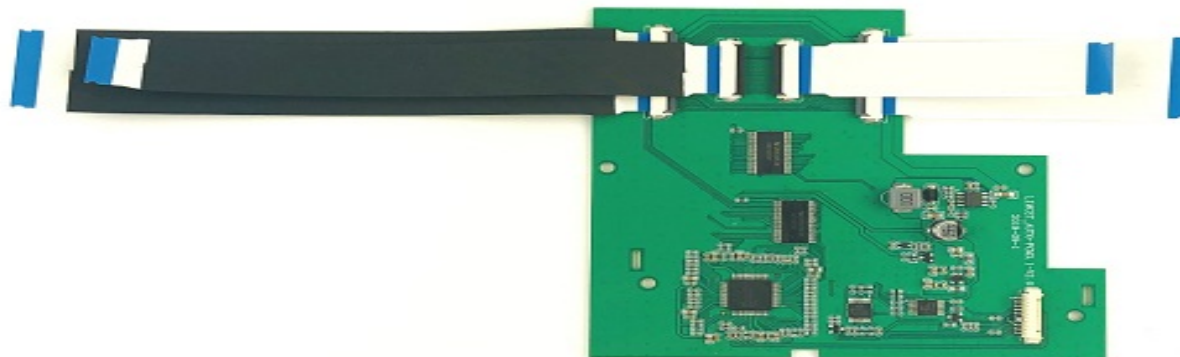


CN1 Pick up the carrier of the original car motherboard 50pin

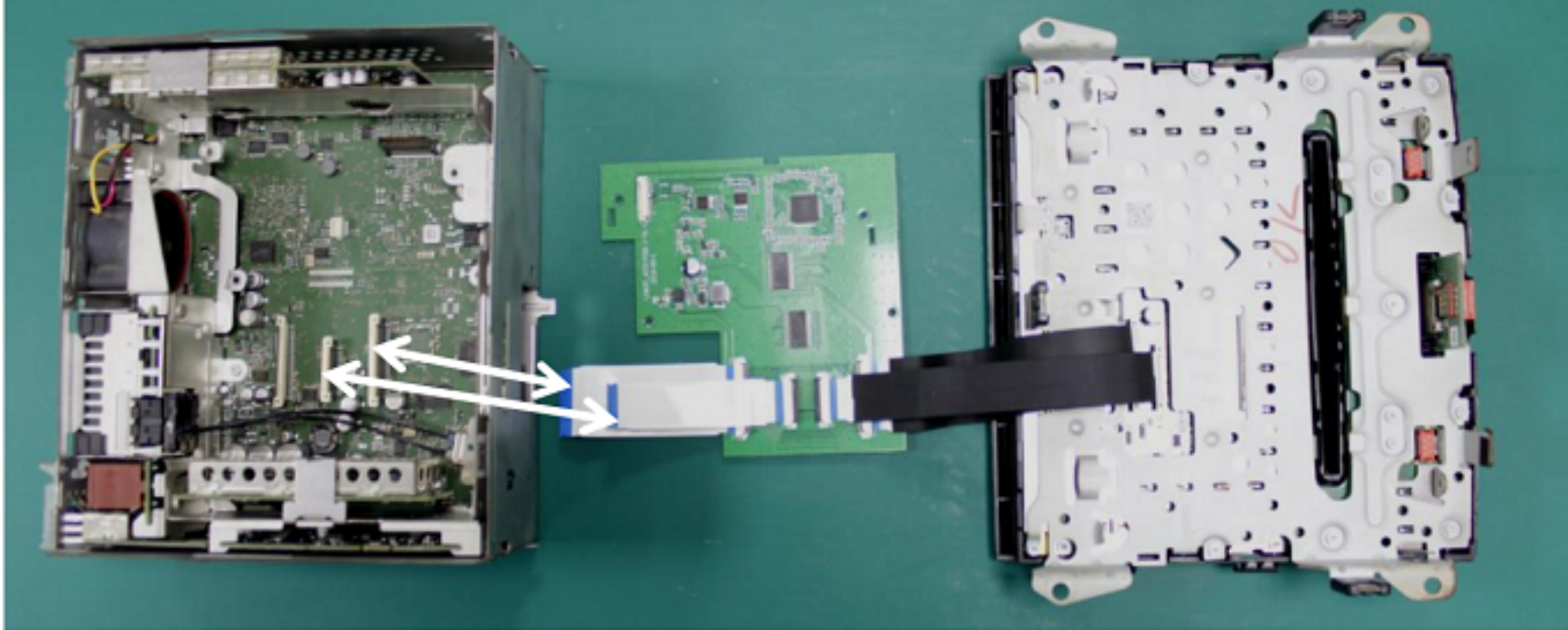
CN2 Pick up the carrier of the original car motherboard 30pin

CN3 Take the 50pin seat of the original car screen

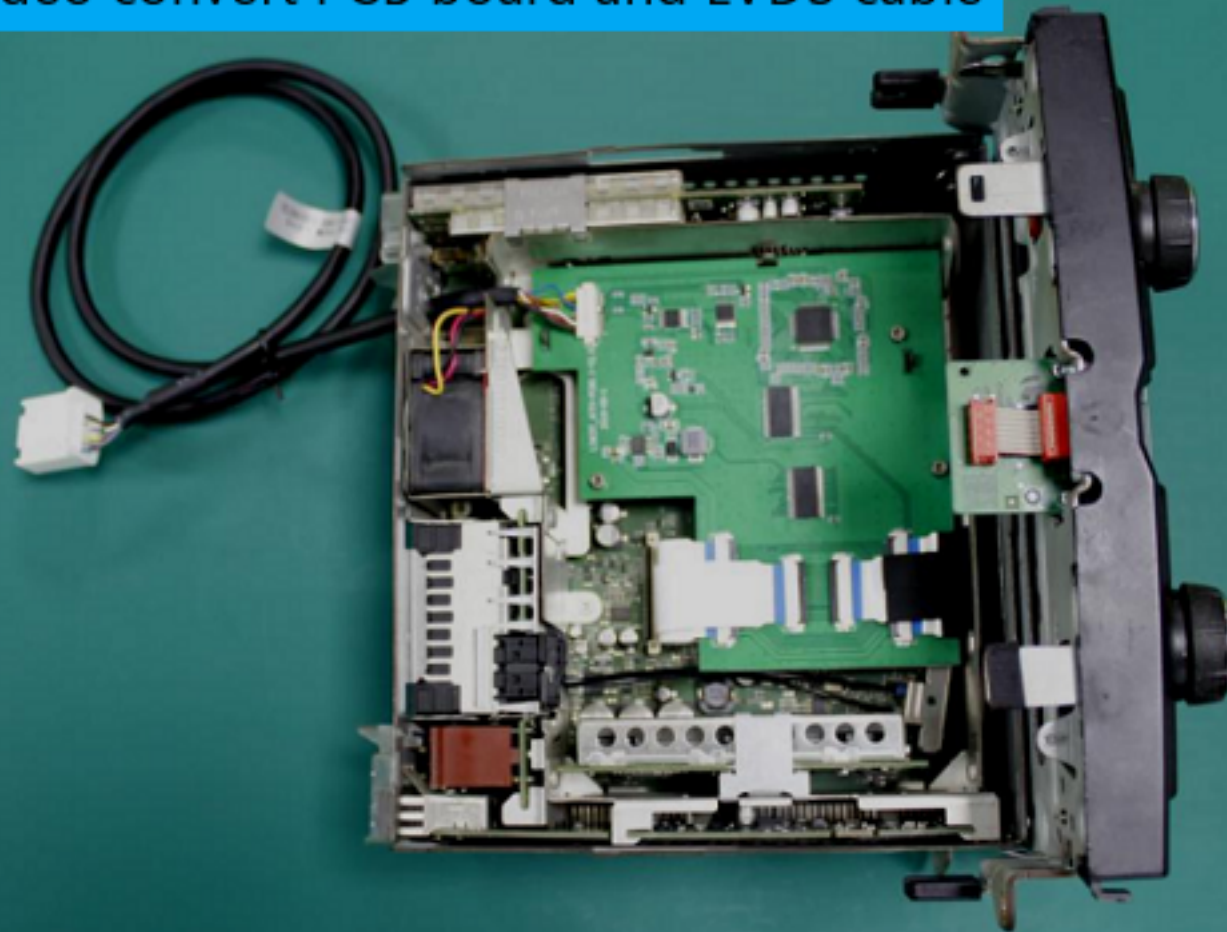
CN4 Take the 50pin seat of the original car screen



Host adapter video conver PCB board connection diagram



Fix host video convert PCB board and LVDS cable



Before entering the system, select AUX in the original car screen, and adjust the AUX volume to the middle position to avoid adding system sound distortion. Then press and hold the MENU button for two seconds to enter the system. Other operations are as follows:

