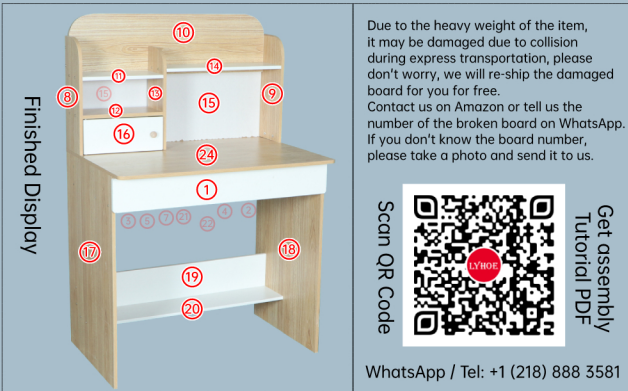


Pink & Blue Desk Installation Instruction

Kind Tips:

1. Follow the instructions to find out the different types and uses of screws.
2. Determine the installation position according to the board number marked on the assembled table on the left, or according to the shape of the board.
3. The colors in the instructions are for reference only.



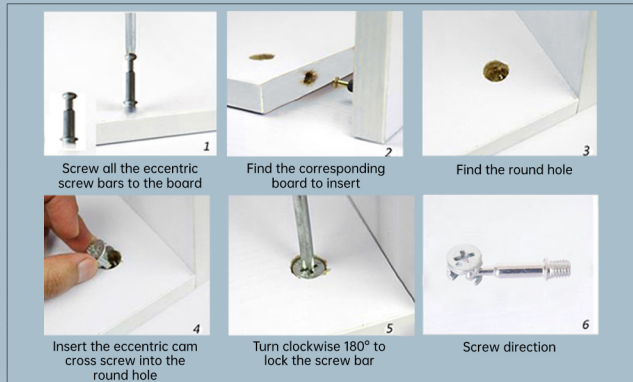
First. Accessory Name, Code and Quantity

A*14	B*14	C*39	D*5	E*1	F*1	G*10

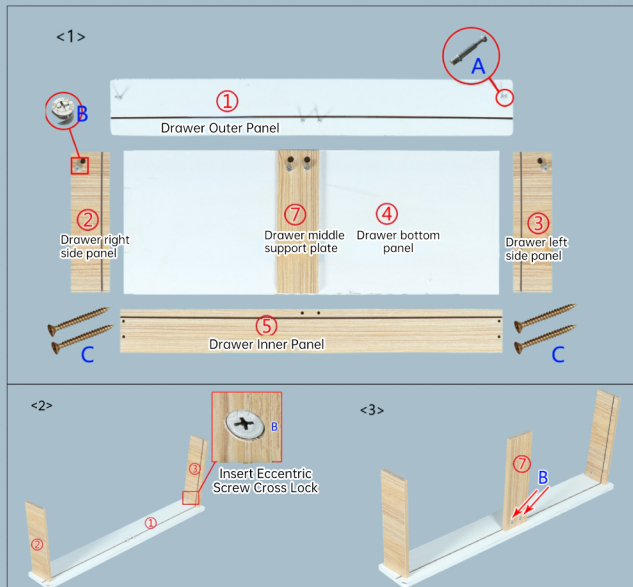
Kind Tips:

1. Please distinguish the plates according to the drawings during installation. The instructions are for reference only;
2. Tighten the screws to 70% tightness. Tighten them after they are all finished!
3. Please read all the drawings before installation.
4. Please refer to the codes for screws and accessories for installation in the drawing.
5. If there are extra screw accessories, it is the spare screws given by the manufacturer!

Second. Assemble Eccentric Cam Screw



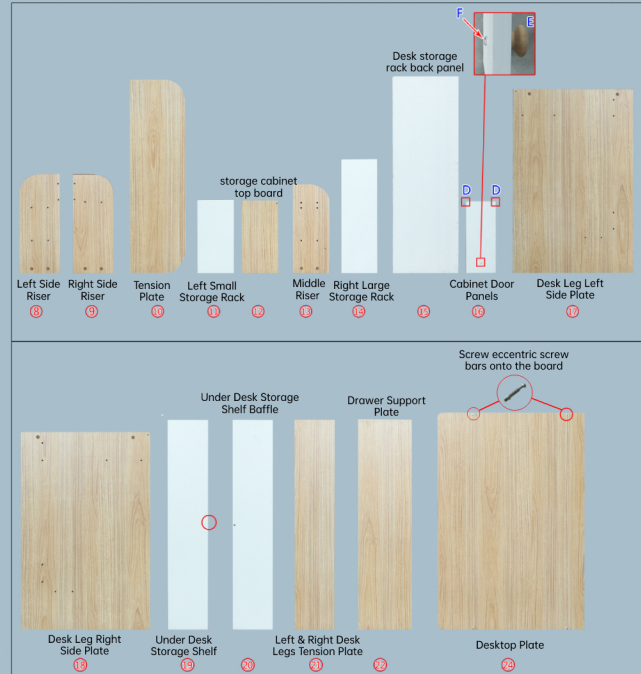
Third. Assemble the drawers



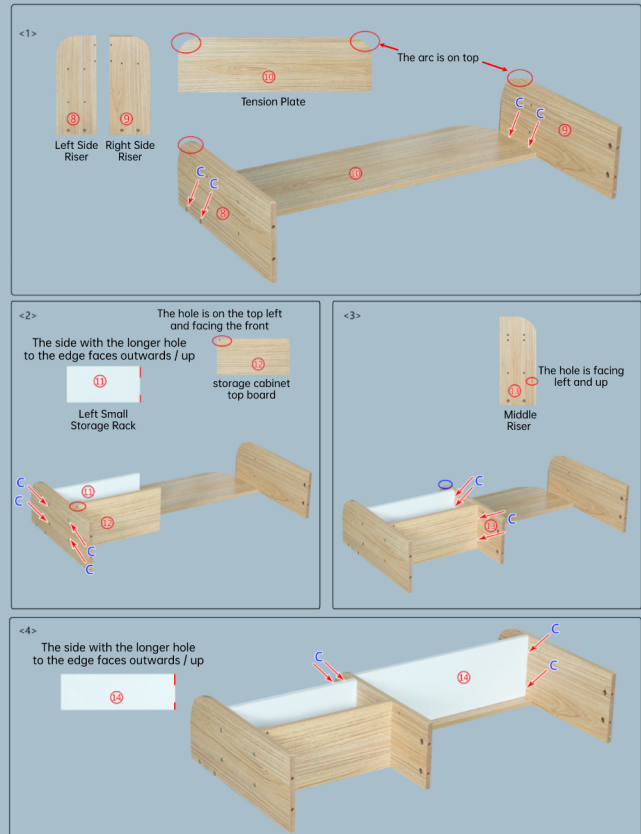
<4> Place it in the bottom of the drawer first, and then rotate the screws clockwise to lock the board

<5>

Fourth. The name and serial number of the plank



Fifth. Assembly Storage Rack



Sixth. Assemble the lower part of the table

<1>

small hole facing inward

19

Under Desk Storage Shelf

17

Desk Leg Left Side Plate

18

Desk Leg Right Side Plate

20

Under Desk Storage Shelf Baffle

small hole facing down

17

18

C: Tapping Screw

20

19

<2>

21

Left & Right Desk Legs Tension Plate

21

C

<3>

22

Drawer Support Plate

C: Tapping Screw

22

<4>

Arc Forward

Front and back screw into Eccentric Screw Bar

24

Desktop Plate

B

24

B

B

B

<5>

Insert the Shelf Pins of the #16 Cabinet Door Panels into the holes of the #1 Desktop Plate

16

D

D

16

Seventh. Assemble the whole table

<1>

Insert the Shelf Pins of the #16 Cabinet Door Panels into the holes of the #12 storage cabinet top board

B

B

B

B

B

B

D

D

<2>

G

G

G

G

G

G

15

15

Desk storage rack back panel

Assembly is Complete

10

11

13

14

15

16

12

24

1

3

5

7

21

22

4

2

17

18

19

20

<3>

Flip to the front and slowly push into the drawer, Insert Shelf Pins after pushing in the drawer

D

Shelf Pins are used to prevent the drawer from falling when pulled out