

## 20W FLEXIBLE SOLAR CHARGER

Lightweight, waterproof energy source to power your gear with maximum efficiency. Take the FLEXSOLAR® 20W Flexible Solar Charger with you on your outdoor travels. With high conversion efficiency up to 24%, it's ideally suited for outdoor life and unexpected power outages. The solar panel is lightweight at only 21.2 ounces and features a comfortable foldable dimension for easy portability.



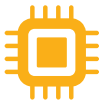
### HIGHLY EFFICIENT

Premium solar cells with an energy conversion efficiency of up to 24%.



### SLIM DESIGN

Compact size and light weight make this charger easy to carry. It fits into any backpack for outdoor activities. It should be a must to have for an emergency kit.



### SMART CHARGING

Quick Charge Technology allows smart and constant charging becomes reality even when moving in or out of the shadow.



### SUPERIOR DURABILITY

Eco-friendly and self-cleaning material E film provides lasting durability to protect against unpredictable weather conditions, and can easily withstand high temperatures.



### CHARGE MULTIPLE DEVICES

Built-in controller box has DC, USB(QC 3.0) ports to directly connect and charge smartphones, iPads and power banks.



Recharge Electronics



3D Actual Model



Controller Box



## 20W FLEXIBLE SOLAR CHARGER

### GENERAL

Model	E20
Part Number	FLC-E3-200200-2
UPC Code	785249519338

### ELECTRICAL SPECIFICATIONS

Rated Peak Power (P <sub>max</sub>   W)	20 W
Open Circuit Voltage (V <sub>oc</sub>   V)	23.7 V
Short Circuit Current (I <sub>sc</sub>   A)	1.1 A
Maximum Power Voltage (V <sub>mp</sub>   V)	19.8 V
Maximum Power Current (I <sub>mp</sub>   A)	1.0 A
Module Efficiency (%)	24%
Power Tolerance	±10%
Operating Temperature (°F/°C)	-4°F to 149°F (-20°C to 65°C)
Application Level	Class A
Temperature Coefficient (P <sub>max</sub> )	-0.45%/K
Temperature Coefficient (V <sub>oc</sub> )	-0.32%/K
Temperature Coefficient (I <sub>sc</sub> )	+0.02%/K

Standard Test Conditions 1000W/m<sup>2</sup>, 25°C, AM1.5

### MECHANICAL SPECIFICATIONS

Solar Cell Type	Monocrystalline
Dimensions (LxWxD)	23.5x 11.0x 0.1 inch (596x 279 x 3 mm) - unfolded 7.8x 11.0x 1.4 inch (198x 279x 35 mm) - folded
Net Weight	21.2 ounces (600g)
Backsheet Color	Black
Hook	4
Controller Box	IP67 rated in accordance with UL 3730 Output ports: USB (QC 3.0), DC5521
Charging Time	USB (QC3.0) port: 0.8-1.3 hrs (charge iphone 12 pro); 1.1-1.8 hrs (charge Galaxy S21) DC5521 port (with connector): 1.1-1.6hrs (charge iphone 12 pro and Galaxy S21)

### PACKAGING & SHIPPING INFORMATION

Retail Box	Quantity 1 unit per retail box:
Dimensions (LxWxD) & Weight	12.6x 9.3x 1.6 in (320x 235x 40 mm); 31.4 ounces (890g)
Master Box	Quantity 22 retail box per master box:
Dimensions (LxWxD) & Weight	25.6x 20.1x 10.0 in (650x 510x 255 mm); 46.1 lbs (20.9kg)

### ACCESSORIES



2 Carabiners

### WARRANTY

2-year limited warranty, register at [flexsolarenergy.com](https://flexsolarenergy.com)

### REGULATORY & CERTIFICATION

FCC, CE, RoHS

