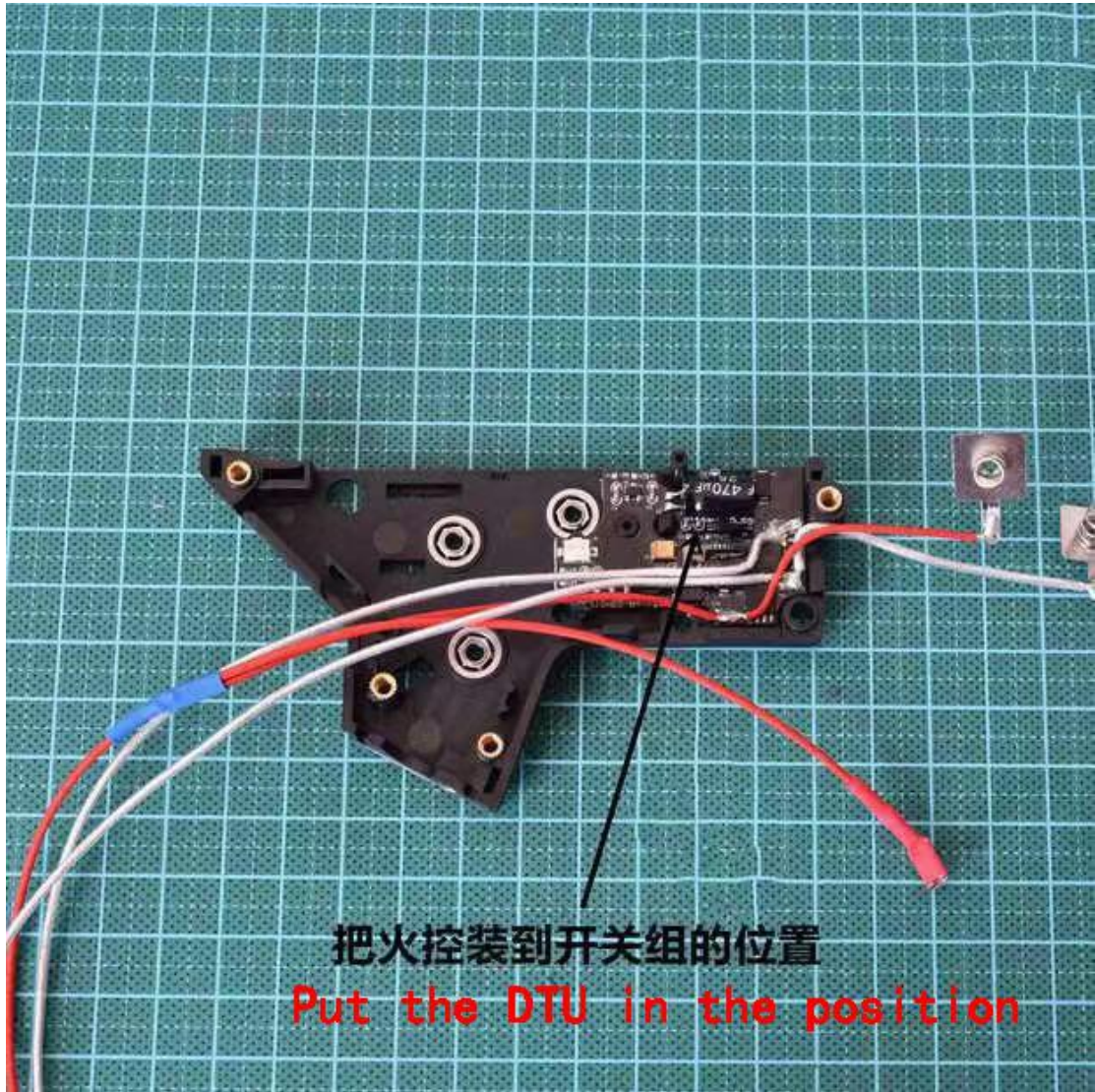


先把轴承装进波箱壳

Install the bearings first



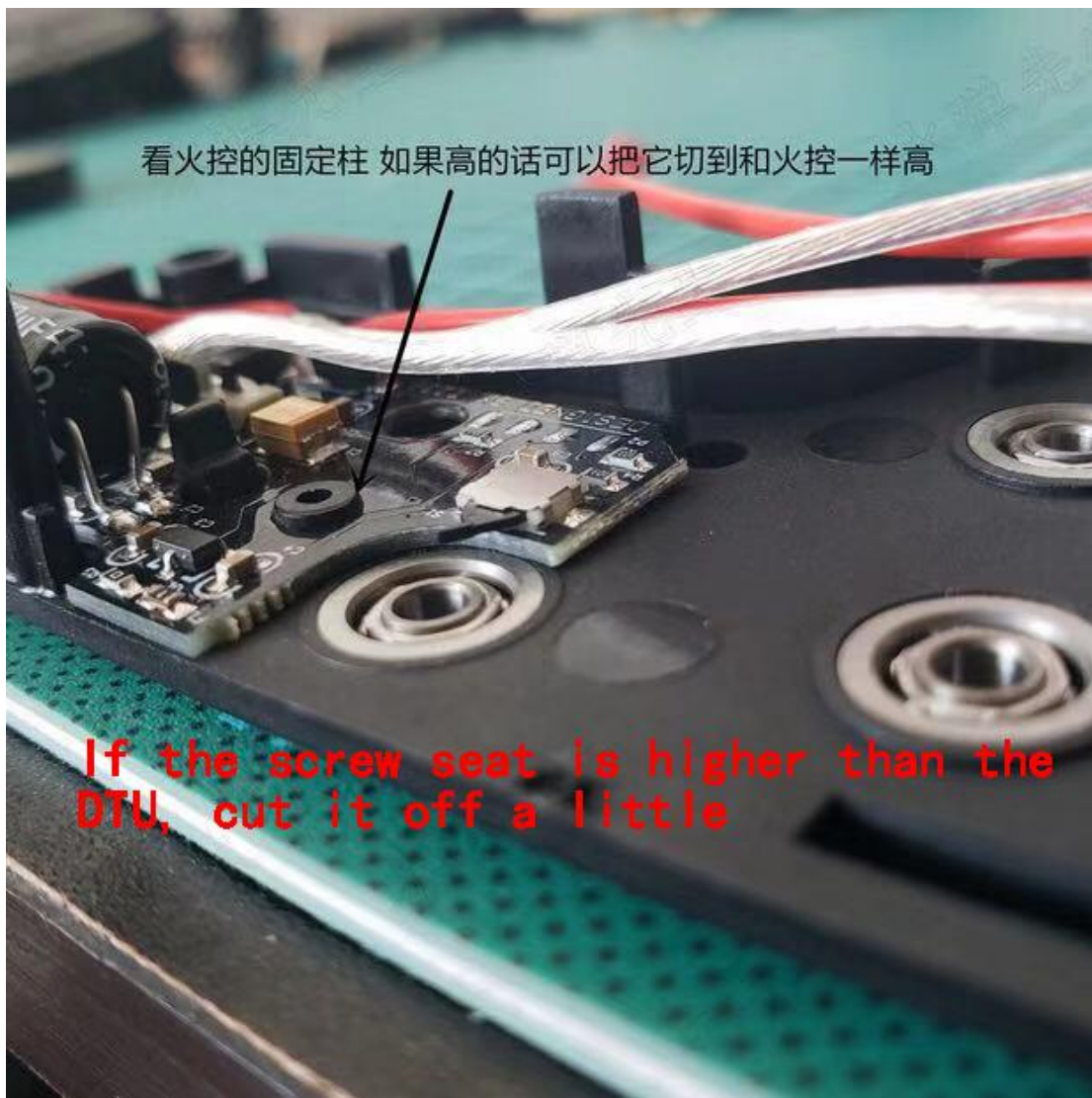
把火控装到开关组的位置
Put the DTU in the position

先观察波箱壳和火控背面开关之间会不会很紧 紧的话时间长会把火控开关顶坏
可以把波箱壳和开关接触的地方切掉一点 不紧的话就不用管它





看火控的固定柱 如果高的话可以把它切到和火控一样高



If the screw seat is higher than the DTU, cut it off a little

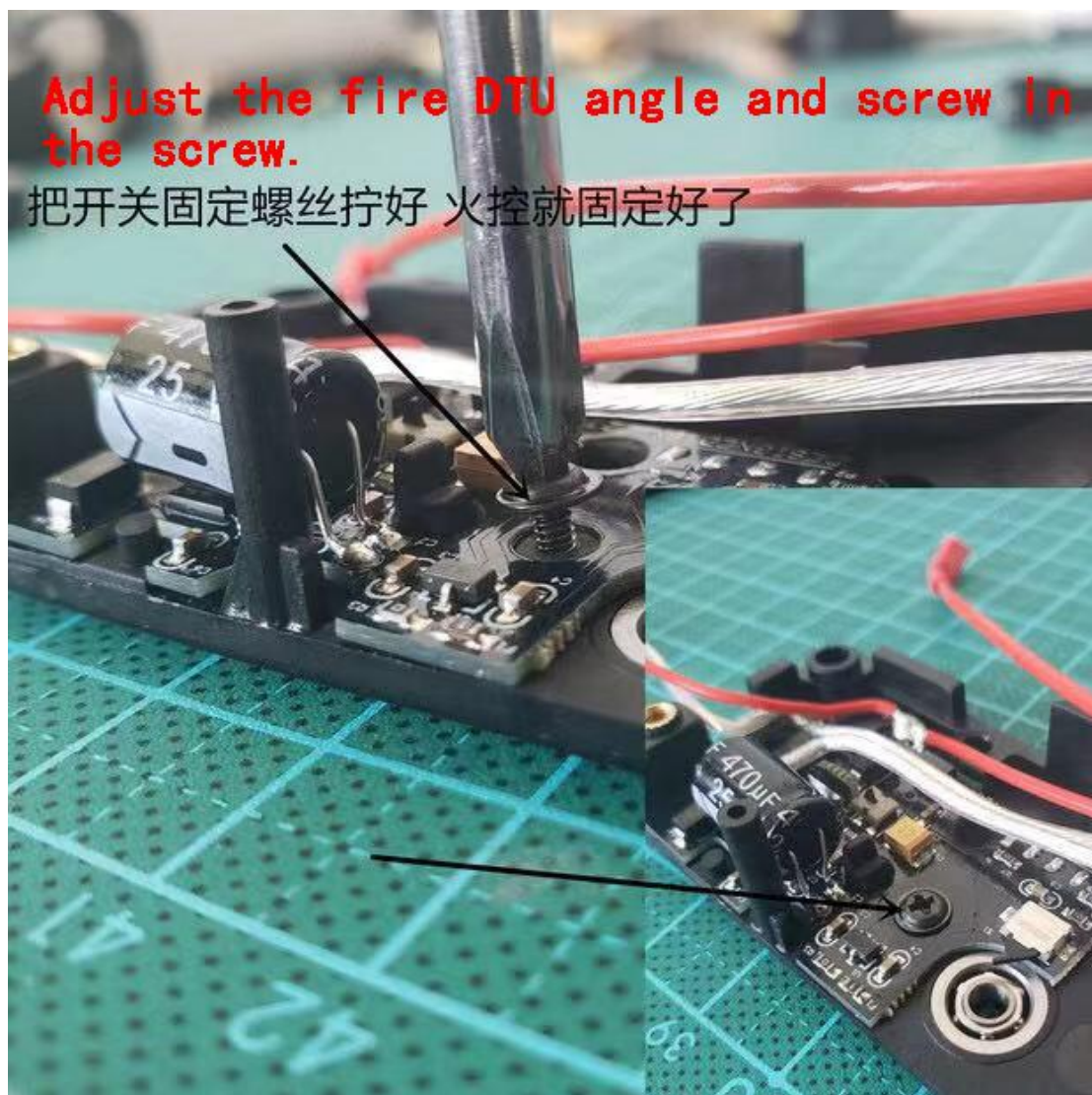
Slightly lower than DTU

切到和火控一样高度就好



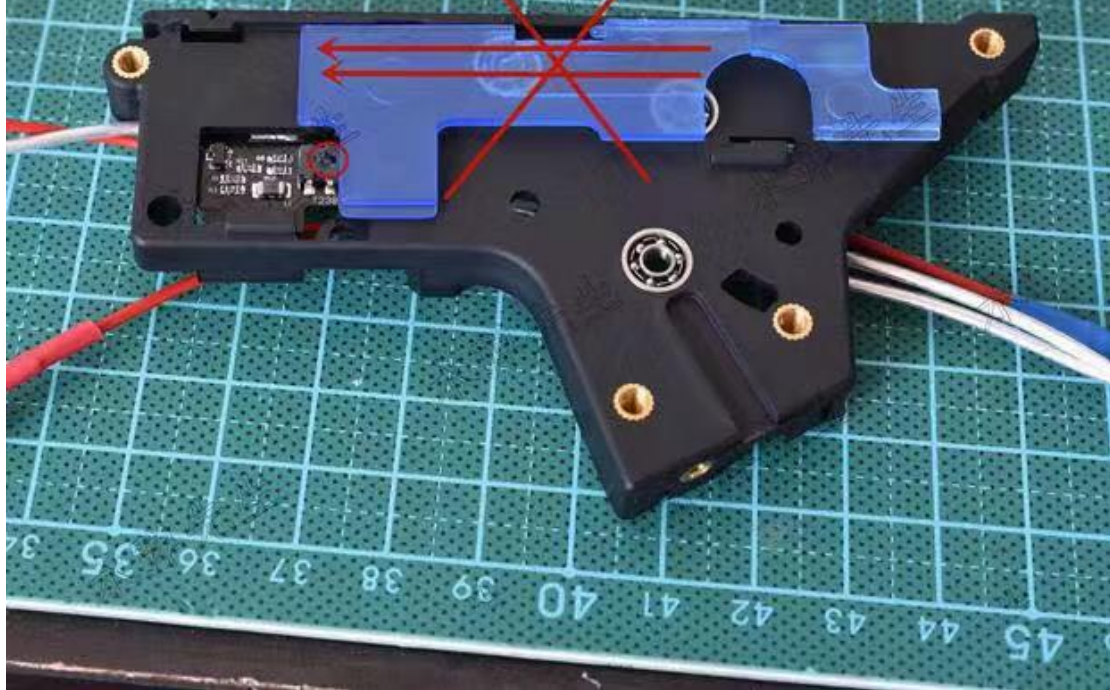
Adjust the fire DTU angle and screw in the screw.

把开关固定螺丝拧好 火控就固定好了



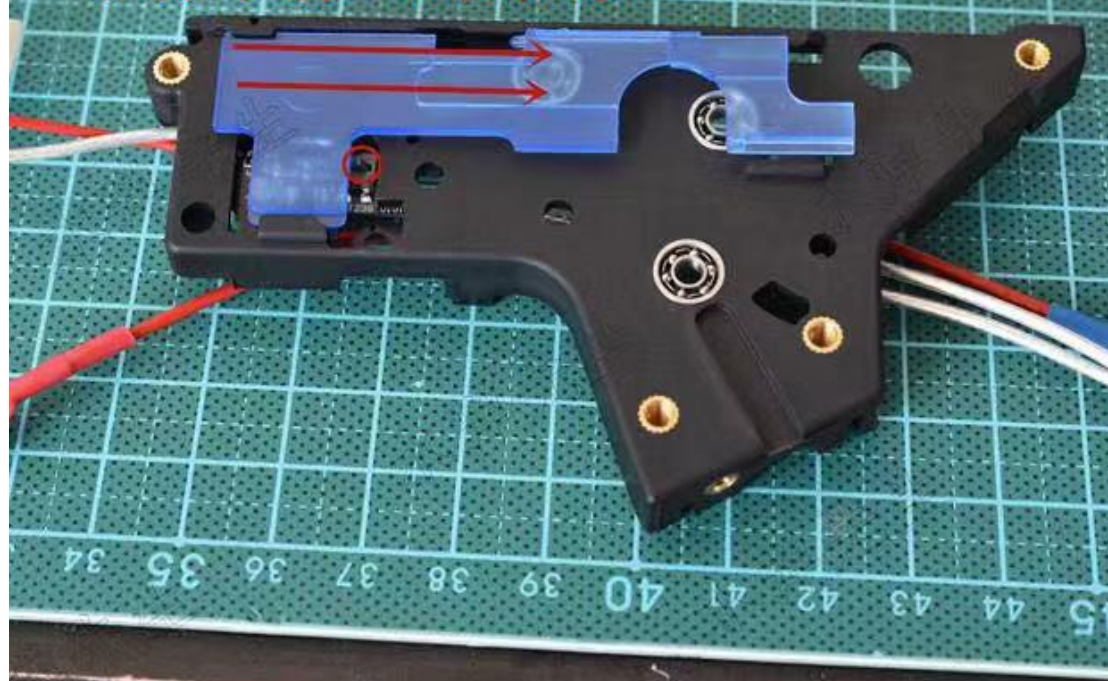
Do not install the selector plate in this direction, the selector switch can be damaged

安装导电片的时候一定不能从后面装入 后面的单发控制开关是单向的 只能从前面压过来 从后面装导电片会把开关直接顶坏掉



正确的安装法师应该从前面卡进去 再往后推 这样就上不到开关了

**The right installation direction
should be like this**

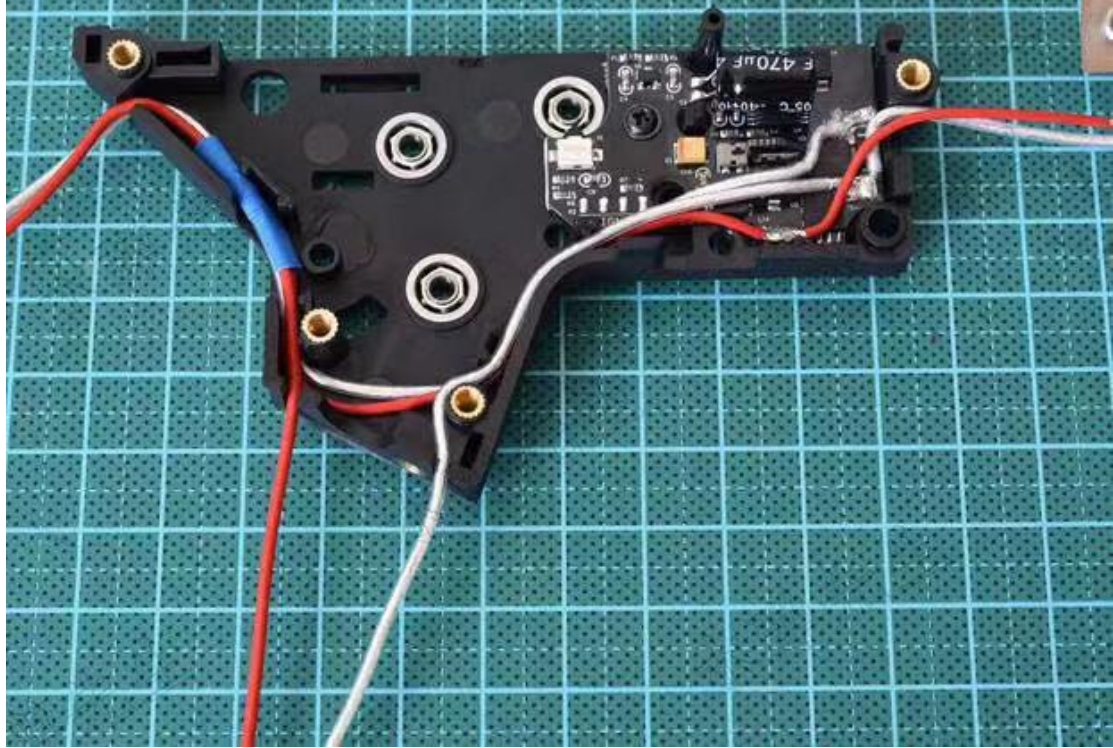



**Make sure that the selector plate
can be stuck in these four positions**

分别把箭头所指的四个点卡进波箱壳导电片就安装完成了



把线组排好
Lay out the wires





安装蛋糕齿的时候一定要注意
不要压到这个小开关
以免误伤开关
还有开关是单向开关
齿轮只能按正常的方向来
拨动 反向旋转也会误伤开关
建议调好齿轮以后再安装火控

**Pay attention to this small switch.
It is not allowed to press it when
installing the sector gear.
It is recommended to shim the gearbox
before installing the DTU.**

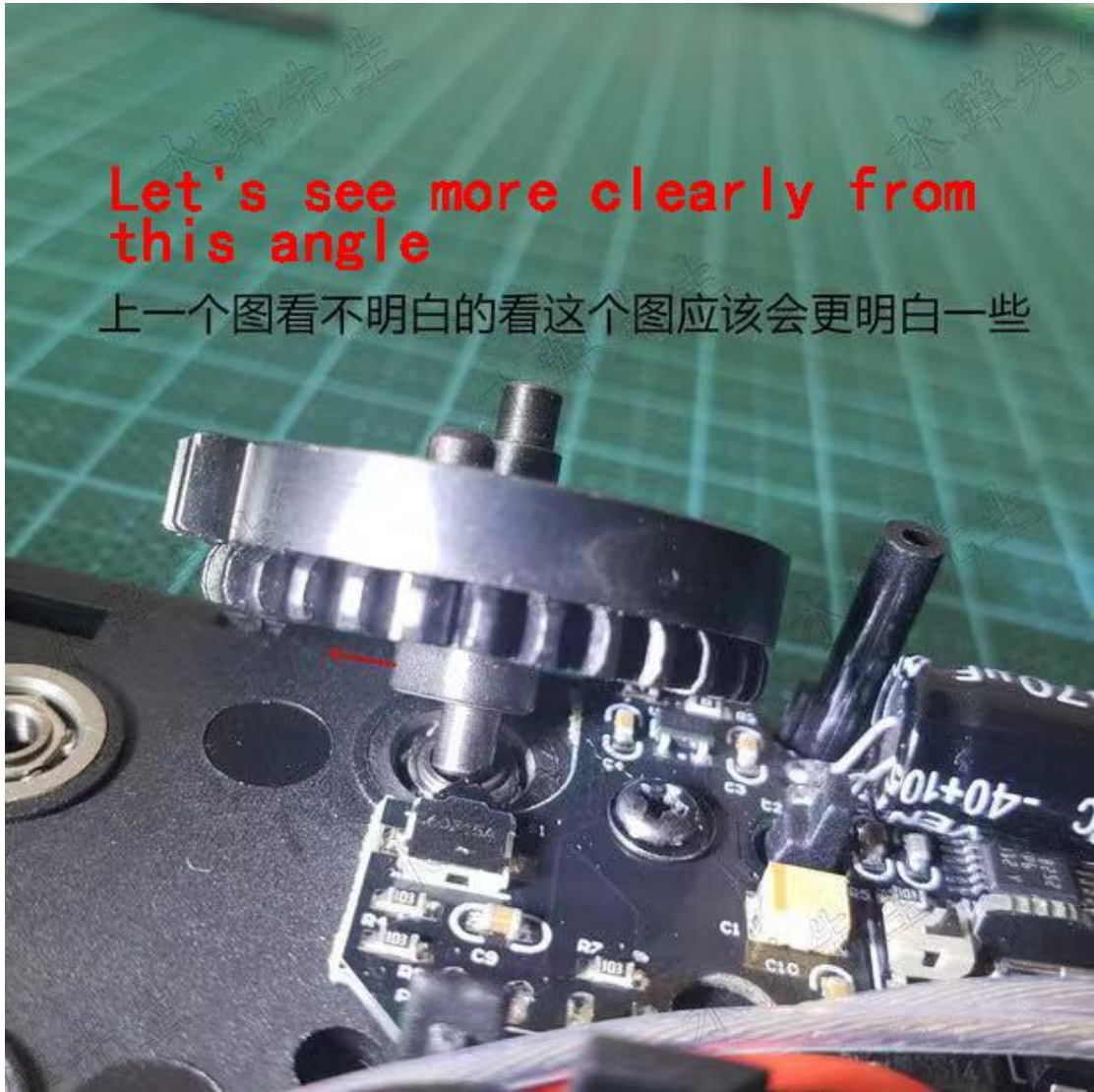
安装蛋糕齿的时候把蛋糕齿上的单发控制凸起朝左或者朝上 避免压到开关

Install the sector gear with the convex point upward to avoid damaging the detection switch



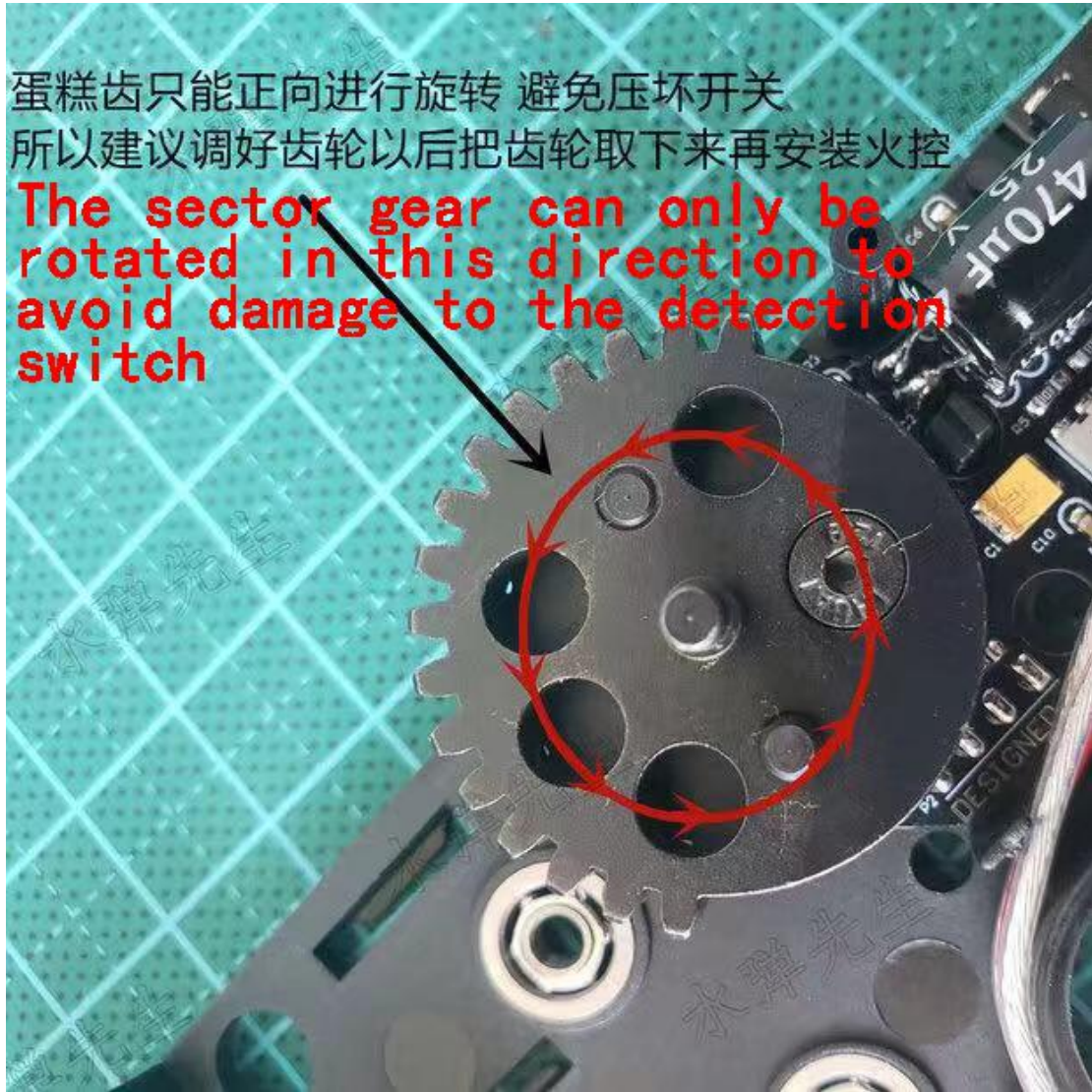
Let's see more clearly from
this angle

上一个图看不明白的看这个图应该会更明白一些



蛋糕齿只能正向进行旋转 避免压坏开关
所以建议调好齿轮以后把齿轮取下来再安装火控

The sector gear can only be rotated in this direction to avoid damage to the detection switch



最后把扳机装好 扳机部分没有特别需要注意的问题
就是把线理好就行 不要挡到扳机的行程轨迹

**Install the trigger, ensure that the
trigger can touch the switch and the
wires will not interfere with the
switch**

