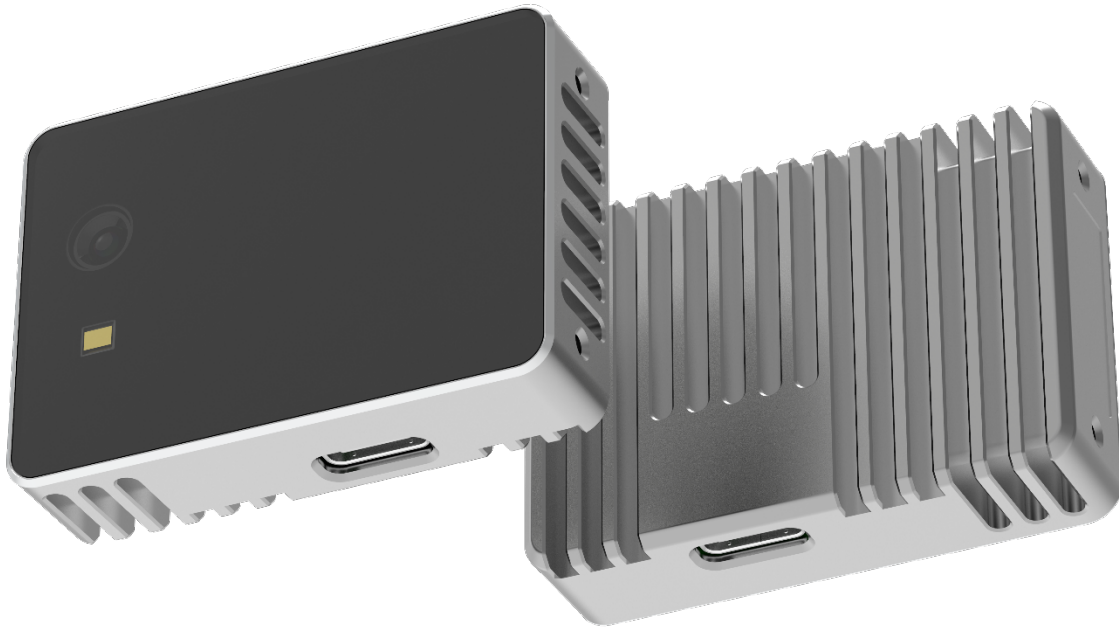


Solid-State Lidar_CS20

Product Manual



Product description

CS20 is equipped with a ToF image sensor with a resolution of 640 * 480. It uses TOF technology to obtain three-dimensional information of objects and space. It has excellent performance such as long-distance and low power consumption, and provides users with convenient and efficient 3D perception.

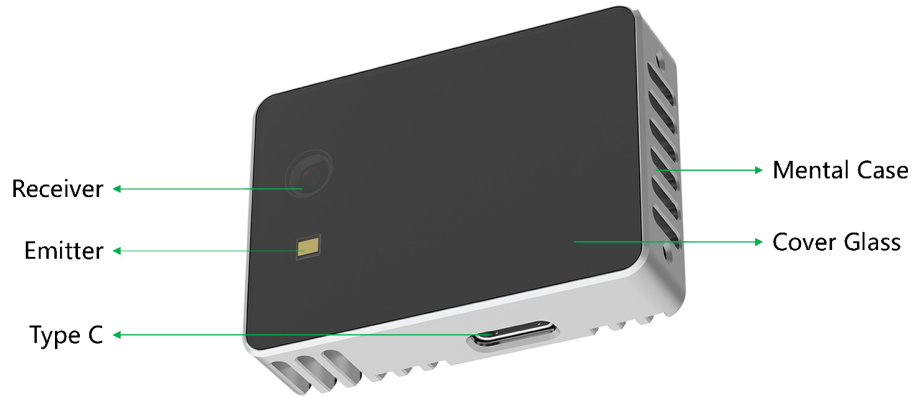
Features

- Millimeter-level measurement accuracy
- Typical measurement range: 0.1-5m@indoor white wall
- Resolution: 640*480
- High dynamic measurement range
- Supports depth, signal amplitude timing synchronization
- Adjustable range and frame rate

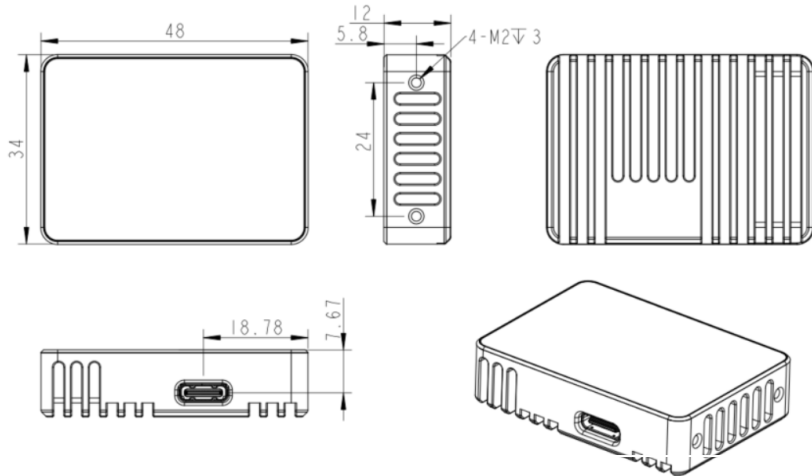
Applications

- Robotic SLAM
- Volume measurement
- Liveness detection
- Somatosensory interaction
- 3D modeling
- Security monitoring/People counting

Product Description



Mechanical structure



- Do not heat this product with other heat sources;
- Do not drop, hit or disassemble this product to prevent damage to internal components and loss of accuracy.

Technical Parameter

Depth resolution	640x480/320x240
Measuring range	0.1-5m, indoor
VCSEL wavelength	940nm
Absolute accuracy	1% @ white wall
FOV	H60° x V45° (Receiver)
Size	48mm x 34mm x 12mm
Data transmission	USB 2.0 , Type C Interface
Power supply	5V, 0.5A
Power consumption	Average power consumption 1.2W
Supported systems	Linux/Windows/ROS/Android
Operating temperature	-10 ~ 50°C
Safety	Class 1

System structure

