

# ITeCH

---

 **iTECH**  
smart.fast.modular.



# BASIC INFO FOR CUT-A200



## **CUT-A250** *CUTTING* *Pin Cutting Machine*

|                 |                  |
|-----------------|------------------|
| PCB Max. Size   | 250mm            |
| PCB Thickness   | Approx 0.8~2.5mm |
| Cut Foot Height | Approx 1~3mm     |

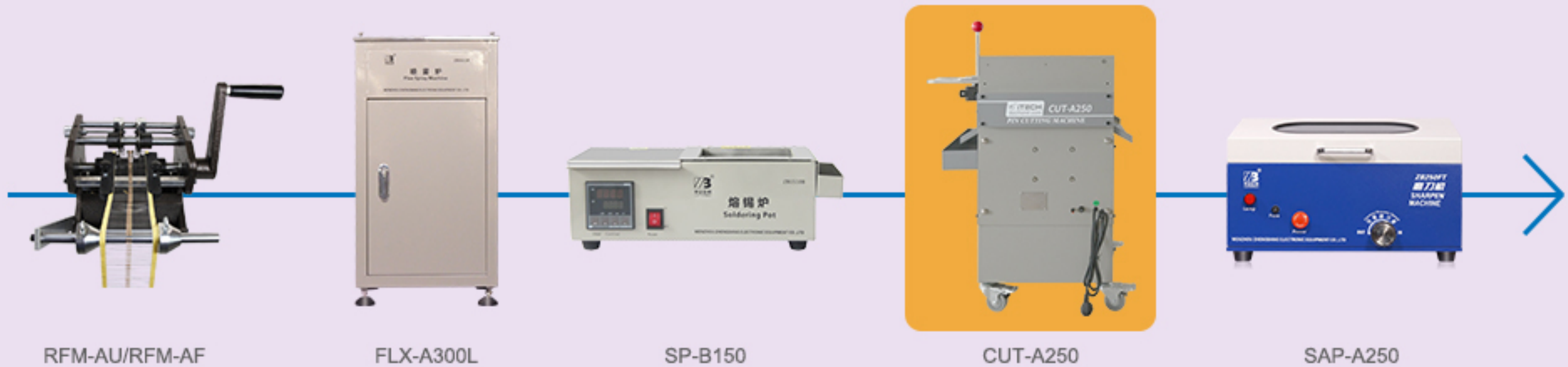
\*Please contact us for availability.

# DIFFERENT THT ELECTRIC SOLDERING MACHINE SOLUTION

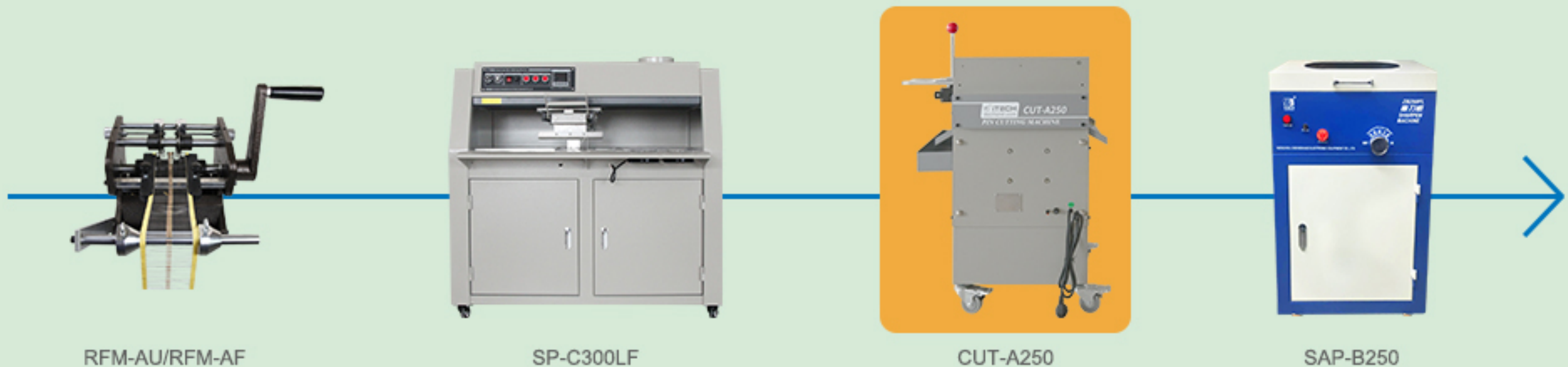
For Individual PCB Design

## Flexible Machine Solution for Soldering

### Case Study 1 THT Prototyping Solution for Production



### Case Study 2 THT Prototyping Solution for Production

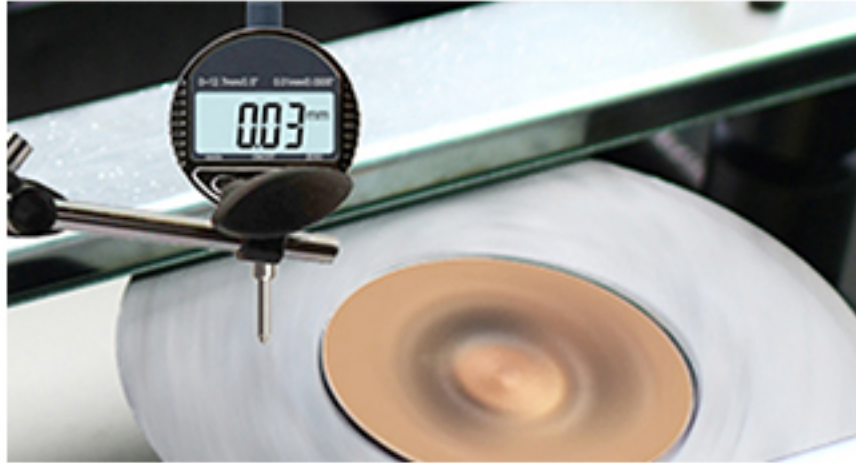




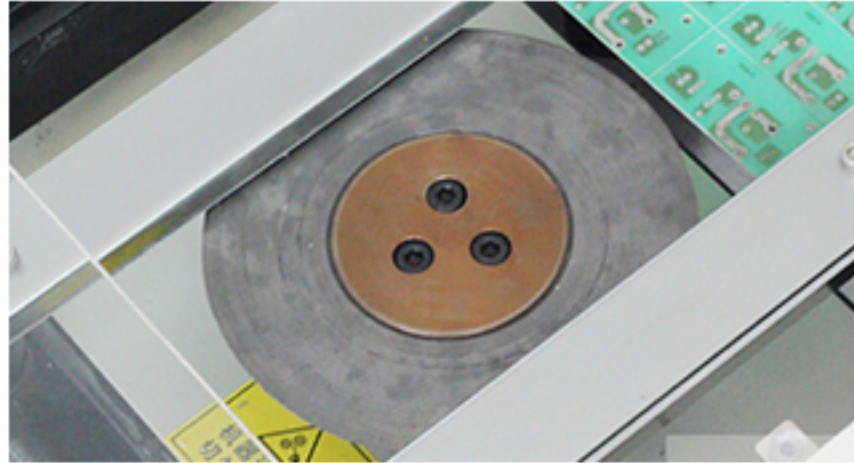
## HARDWARE DETAIL

For Trustable Online Performance

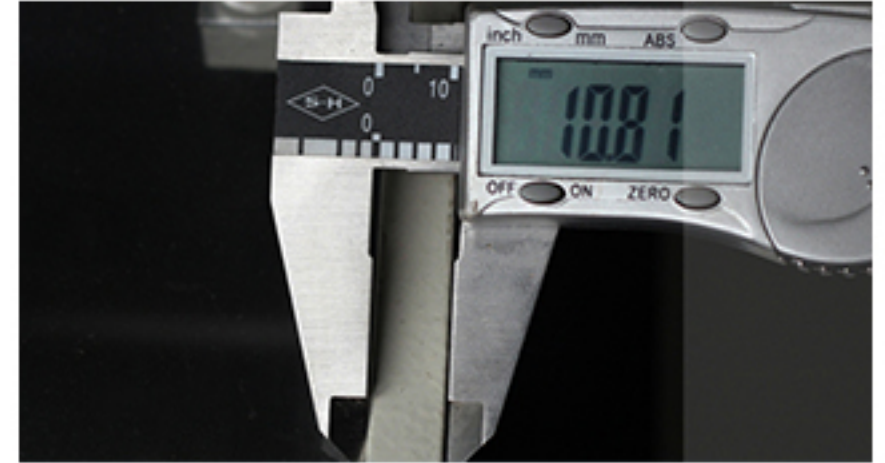
ITECH series cutting machine are apply to cut the extra pin after components and spares soldering, it's by the high precision process components assembled, grinding process at the key part, good cutting consistency, quick blade rotate speed , stable,low noise, high efficiency and convinent to operate. Double lead rails travel adjust same time and the height of wide cutting can be adjusted casually and cost-effective.



Equipped with high precision blade bearing



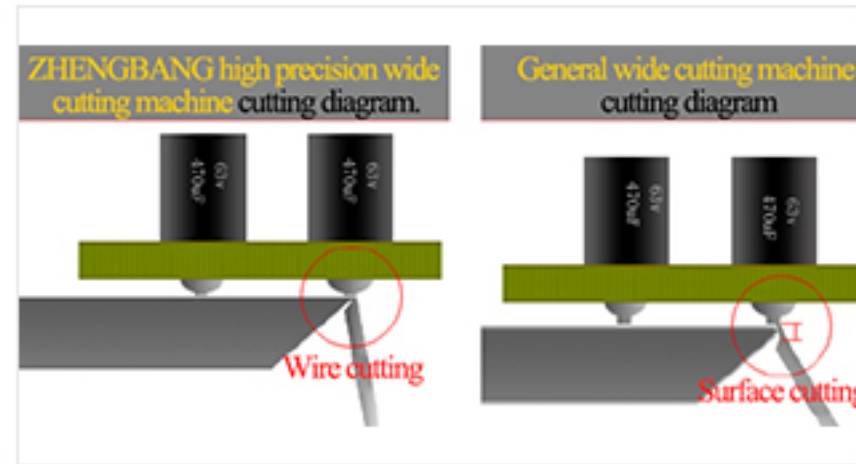
Equipped with exclusive Three holes blade gland technology



The outside of body machine made by 11 mm thick stainless steel



Calmly design + Imported bearing, blade not shake with high-speed running



Stainless steel PCB sending materials lead rail + stainless steel lead rail gland

## SPECIFICATIONS

| Technical Data          |                  |                  |
|-------------------------|------------------|------------------|
| Model                   | CUT-A200         | CUT-A250         |
| Lead Rail Stroke        | 0~220mm          | 0~280mm          |
| Blade Specification     | Φ200×70×3.5mm    | Φ250×70×3.5mm    |
| Circuit Board Thickness | Approx0.8~2.5mm  |                  |
| Cut Foot Height         | Approx1~3mm      |                  |
| Blade Speed             | 4500r/min        |                  |
| Power                   | 550W             |                  |
| Power Supply            | AC220V±10% 50Hz  |                  |
| Outline Size            | L615×W415×H780mm | L665×W475×H780mm |
| Weight                  | 80kg             | 95kg             |