

GLASS RACK

杯筐

Wash, Transport And Store. All-In-One
洗涤、存储和运输功能合一

Efficient Washing
Sanitary Storage
Inventory Control
Safe, Sanitary Transportation

高效清洗
卫生储存系统
库存控制
安全、卫生搬运



GLASS RACK

杯筐



GLASS RACK

杯筐

Wash, Transport And Store. All-In-One

洗涤、存储和运输功能合一

Features 产品特点

- 产品易于操作，并附带1.3CM重叠区域和平滑侧边。与所有大型盘碟架制造的产品相互叠放。
 - 开放的内部分格，确保水和清洁溶液进行彻底的循环并促进快速彻底的干燥。
 - 极度耐用，寿命长久的聚丙烯可经受腐蚀和高达93°C (200°F) 的高温。
 - 封闭的外壁，设计可实现最优的清洁与储存效果，隔绝手指和污染物，并降低器皿破损和员工受伤的风险。
 - 易于搬运，易于抓握的四个圆角把手，其平滑的侧边和圆角可以减少受伤的危险。
- Easy to handle, with 1.3cm overlap area and smooth sides, racks interstack with all racks from major dishrack manufacturers.
 - Open inside compartments provide thorough circulation of water and cleaning solutions, and promote quick and thorough drying.
 - Extremely durable, long-lasting polypropylene are built to withstand chemicals and high temperatures up to 200°F (93°C)
 - Closed external walls are designed for optimum cleaning and storage, racks keep finger and contaminants out and reduce risk of breakage and injury.
 - Easy to carry, easy to grip handles on all four sides, as well as smooth overlapping sides and rounded corners, reduce the risk of injury.

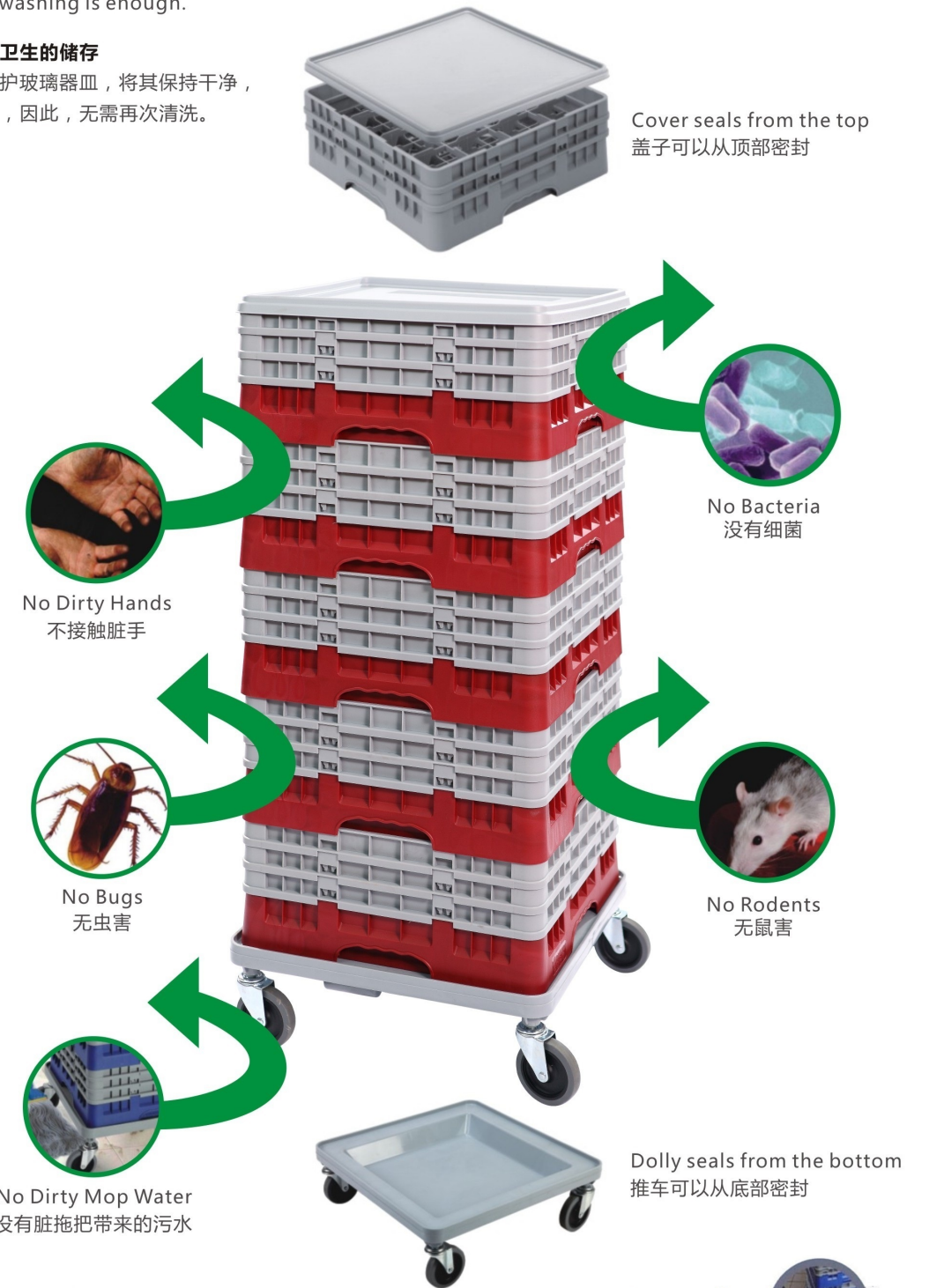


GLASS RACK

杯筐

Perfect Washing & Sanitary Storage System
Glassware stays clean when in storage, so one time washing is enough.

最优的清洗与卫生的储存
杯筐系统将保护玻璃器皿，将其保持干净，直到下次使用，因此，无需再次清洗。



Unsanitary Storage System
Open outer wall is very easy to result in pollutions, such as dirty water, viruses, insect and pest, contaminant, dust and dirty hand. Clean glassware should be washed again after being polluted, it wastes time and money.

不卫生的储存
开放式外壁会使一些污染物穿过侧壁，如脏水、细菌、昆虫、污垢、灰尘和员工的手指，干净的玻璃器皿受到污染后，就需要花钱进行再清理，并且带来额外的处理工作。

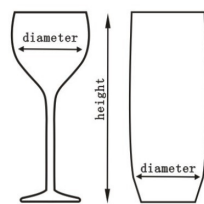


GLASS RACK

杯筐

These racks offer complete protection for all your delicate and valuable stemware and tumblers, from washing and handling to stacking, storing and transporting.

这些架体为所有精致而贵重的高脚杯与平底杯提供安全的保护，满足洗涤，搬运以致叠放，储存和运输的要求。

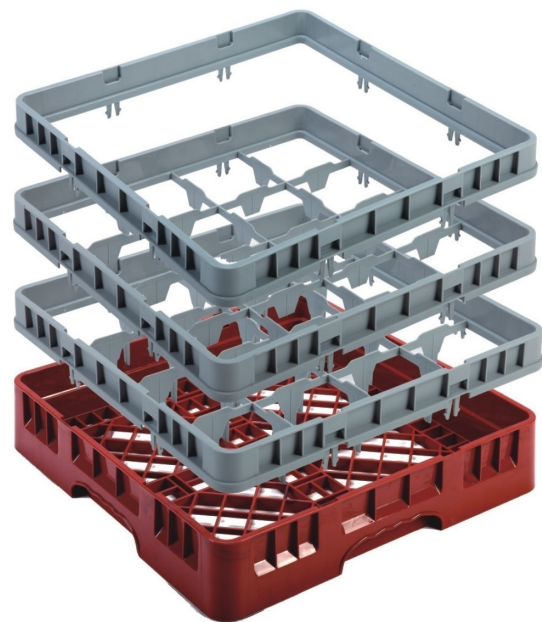


Choose the Correct Dishrack

1. Measure the maximum diameter of your glass (stemware or tumbler) to determine the number of compartments
2. Measure the maximum height of your glass (stemware or tumbler) to the top edge of the rim to determine the compartment height.

选择正确的餐具架

- 1、测量玻璃杯（高脚杯与平底杯）的最大直径，以决定分格的数量。
- 2、测量玻璃杯（高脚杯与平底杯）从底部到顶部的高度，以决定分格的高度。



- ← E3=标准开放式扩展架
E3=Standard Open Extender
- ← E2=标准半落下架扩展架
E2=Standard Drop Extender
- ← E1=标准全落下格架扩展架
E1=Standard Full Drop Extender
- ← 00RB标准基架
00RB=Base Rack

00RB基础筐（5种颜色）

00RB Base Rack (5 Colors)



红色 Red



蓝色 Blue



绿色 Green



棕色 Brown



灰色 Grey



9分格(Compartment)



16分格(Compartment)



25分格(Compartment)



36分格(Compartment)



49分格(Compartment)

我们建议基础筐分色，分格使用，方便识别内储物品。提高工作效率!

To improve work efficiency and easy to identify rack contents, We recommend base rack and compartment to be color-coded.

GLASS RACK

杯筐



09E1 (全落下扩展架)
Full Drop Extender



09E2 (半落下扩展架)
Half Drop Extender



16E1 (全落下扩展架)
Full Drop Extender



16E2 (半落下扩展架)
Half Drop Extender



25E1 (全落下扩展架)
Full Drop Extender



25E2 (半落下扩展架)
Half Drop Extender



36E1 (全落下扩展架)
Full Drop Extender



36E2 (半落下扩展架)
Half Drop Extender



49E1 (全落下扩展架)
Full Drop Extender



49E2 (半落下扩展架)
Half Drop Extender

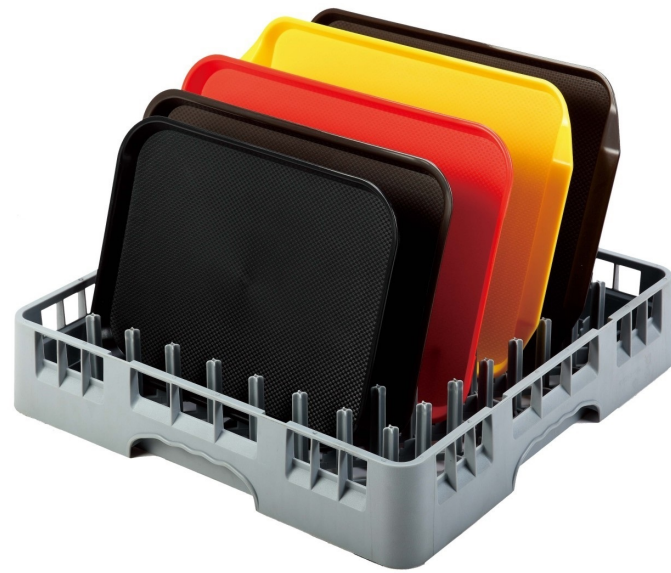


GLASS RACK

杯筐

Ideal for washing varying sized plates bowls, trays and plates.

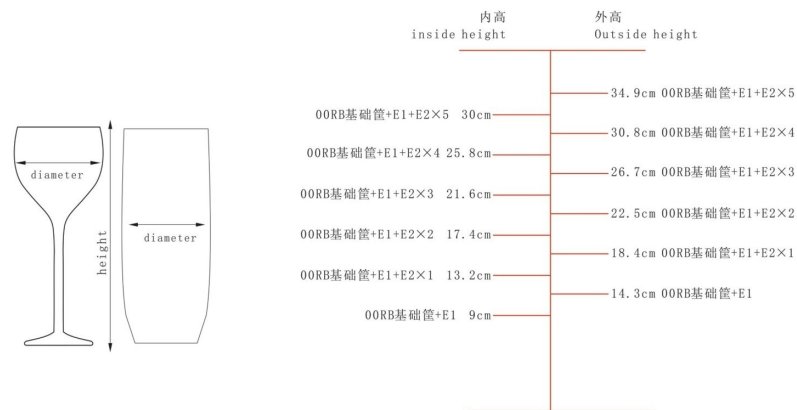
本产品便于洗涤各种尺寸的盘碟，碗筷，托盘和刀叉。



Code 型号	00RB	00RF	00RP	00ROP	20RB
Name 名称	基础筐	刀叉筐	64针碟筐	64开口针碟筐	20格基础筐
Product Size(cm) 产品尺寸	50×50×10.1	50×50×10.1	50×50×10.1	50×50×10.1	50×50×10.1
Case Pack 外箱装量	6 pcs	6 pcs	6 pcs	6 pcs	6 pcs
Packing size(cm) 装箱尺寸	51×51×57.5	51×51×57.5	51×51×59.5	51×51×59.5	51×51×57.5



Code 型号	00RC	E300RE	RD01	RD02
Name 名称	杯筐盖	开放式扩展架	杯筐车 (无把手)	杯筐车 (有把手)
Product Size(cm) 产品尺寸	50×50×3.5	50×50×7.5	53×53×7.8	53×53×92
Case Pack 外箱装量	24 pcs	12 pcs	1 pc	1 pc(杯筐) 20 pcs(把手)
Packing size(cm) 装箱尺寸	52×52×36	51×51×72	55.5×12×61.5	55.5×12×61.5 56×49×89



GLASS RACK

杯筐

9分格/9 Compartment

Icon	内高 Inside height	9.0CM	13.2CM	17.4CM	21.6CM	25.8CM	30.0CM
	外高 Outside height	14.3CM	18.4CM	22.5CM	26.7CM	30.8CM	34.9CM
Icon	基础筐+扩展架	基础筐/00RB+E1	基础筐/00RB+E1+E2×1	基础筐/00RB+E1+E2×2	基础筐/00RB+E1+E2×3	基础筐/00RB+E1+E2×4	基础筐/00RB+E1+E2×5
	体重KG (体积M³)	2.0(0.036)	2.56(0.046)	3.13(0.056)	3.69(0.067)	4.26(0.077)	4.82(0.0873)
尺寸 Size	50×50×14.3cm	50×50×18.4cm	50×50×22.5cm	50×50×26.7cm	50×50×30.8cm	50×50×34.9cm	

16分格/16 Compartment

Icon	内高 Inside height	9.0CM	13.2CM	17.4CM	21.6CM	25.8CM	30.0CM
	外高 Outside height	14.3CM	18.4CM	22.5CM	26.7CM	30.8CM	34.9CM
Icon	基础筐+扩展架	基础筐/00RB+E1	基础筐/00RB+E1+E2×1	基础筐/00RB+E1+E2×2	基础筐/00RB+E1+E2×3	基础筐/00RB+E1+E2×4	基础筐/00RB+E1+E2×5
	体重KG (体积M³)	1.91(0.036)	2.48(0.046)	3.06(0.056)	3.63(0.067)	4.21(0.077)	4.78(0.0873)
尺寸 Size	50×50×14.3cm	50×50×18.4cm	50×50×22.5cm	50×50×26.7cm	50×50×30.8cm	50×50×34.9cm	

25分格/25 Compartment

Icon	内高 Inside height	9.0CM	13.2CM	17.4CM	21.6CM	25.8CM	30.0CM
	外高 Outside height	14.3CM	18.4CM	22.5CM	26.7CM	30.8CM	34.9CM
Icon	基础筐+扩展架	基础筐/00RB+E1	基础筐/00RB+E1+E2×1	基础筐/00RB+E1+E2×2	基础筐/00RB+E1+E2×3	基础筐/00RB+E1+E2×4	基础筐/00RB+E1+E2×5
	体重KG (体积M³)	2.00(0.036)	2.66(0.046)	3.31(0.056)	3.97(0.067)	4.62(0.077)	5.28(0.0873)
尺寸 Size	50×50×14.3cm	50×50×18.4cm	50×50×22.5cm	50×50×26.7cm	50×50×30.8cm	50×50×34.9cm	

36分格/36 Compartment

Icon	内高 Inside height	9.0CM	13.2CM	17.4CM	21.6CM	25.8CM	30.0CM
	外高 Outside height	14.3CM	18.4CM	22.5CM	26.7CM	30.8CM	34.9CM
Icon	基础筐+扩展架	基础筐/00RB+E1	基础筐/00RB+E1+E2×1	基础筐/00RB+E1+E2×2	基础筐/00RB+E1+E2×3	基础筐/00RB+E1+E2×4	基础筐/00RB+E1+E2×5
	体重KG (体积M³)	2.07(0.036)	2.76(0.046)	3.45(0.056)	4.14(0.067)	4.83(0.077)	5.52(0.0873)
尺寸 Size	50×50×14.3cm	50×50×18.4cm	50×50×22.5cm	50×50×26.7cm	50×50×30.8cm	50×50×34.9cm	

49分格/49 Compartment

Icon	内高 Inside height	9.0CM	13.2CM	17.4CM	21.6CM	25.8CM	30.0CM
	外高 Outside height	14.3CM	18.4CM	22.5CM	26.7CM	30.8CM	34.9CM
Icon	基础筐+扩展架	基础筐/00RB+E1	基础筐/00RB+E1+E2×1	基础筐/00RB+E1+E2×2	基础筐/00RB+E1+E2×3	基础筐/00RB+E1+E2×4	基础筐/00RB+E1+E2×5
	体重KG (体积M³)	2.21(0.036)	3.00(0.046)	3.78(0.056)	4.57(0.067)	5.36(0.077)	6.15(0.0873)
尺寸 Size	50×50×14.3cm	50×50×18.4cm	50×50×22.5cm	50×50×26.7cm	50×50×30.8cm	50×50×34.9cm	

MULTIPLE ADJUSTABLE DISH CADDY

多功能可调节碟盘车

Includes vinyl cover with every caddy for sanitary storage;
Polyethylene divider is easy to adjust, flexible configuration holds a variety of plates;
Non-marking casters for easy transport of loaded caddy;
Extremely Durable. Heavy duty polyethylene construction protects china from chipping,
Won't chip, crack or rust.

每个产品都配有乙烯罩, 以便实现卫生储存;
分格柱易于调节, 灵活的结构可储存各种盘碟;
无印痕方便轮, 便于运输;
极度耐久, 重载聚乙烯结构可保护瓷器、防止破裂, 不会缺角、开裂或生锈。



附送防尘罩, 随时保持碟盘干净无尘。
Vinyl cover included for sanitary storage.



JD-ADC1

ADC1碟盘车可承装4.5" 到13",
常用碟盘、椭圆盘、托盘等,
最多可放8格, 每落45-50盘,
最多400盘, 6条分隔柱。

ADC1 Can hold 4.5" to 13"
plates, trays, dishes, maximum
8 stacks, total 400 pcs, 6 dividers.



JD-ADC2

ADC2碟盘车可承装4.5" 到13",
常用碟盘、椭圆盘、托盘等,
最多可放6格, 每落45-50盘,
最多300盘, 6条分隔柱。

ADC2 Can hold 4.5" to 13"
plates, trays, dishes, maximum
6 stacks, total 300 pcs, 6 dividers.



JD-ADC3

ADC3碟盘车可承装4.5" 到13",
常用碟盘、椭圆盘、托盘等,
最多可放4格, 每落45-50盘,
最多200盘, 4条分隔柱。

ADC3 Can hold 4.5" to 13"
plates, trays, dishes, maximum
4 stacks, total 400 pcs, 4 dividers.

型号 Code	JD-ADC1	JD-ADC2	JD-ADC3
名称 Name	大号碟盘车	中号碟盘车	小号碟盘车
产品尺寸 Product Size (cm)	109×72×80	93×72×80	90×72.5×80
材质 Material	聚乙烯/PE	聚乙烯/PE	聚乙烯/PE
颜色 Colour	棕色/Brown	棕色/Brown	棕色/Brown
外箱装量 Case Pack	1pc	1pc	1pc
装箱尺寸 Packing size(cm)	110×73×81	94×73×80	90×72.5×80

MULTIPLE ADJUSTABLE DISH CADDY

多功能可调节碟盘车



ADC1 可放7" 到9" 及5.5"
到7" 及4.5" 圆盘
ADC1 Layout for 7" to
9" plate and 5-1/2" to
7" and 4-1/2" plate



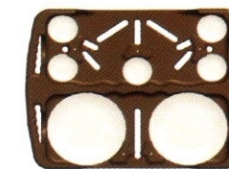
ADC1 可放9" 到13" 圆盘
ADC1 Layout for 9" to
13" plates



ADC1 可放7" 到9" 圆盘
ADC1 Layout for 7"
to 9" plates



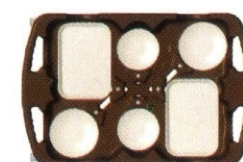
ADC1 可放5.5" 到7" 圆盘
ADC1 Layout for 5-1/2"
to 7" plates



ADC1 可放9" 到13" 及5"
圆盘
ADC1 Layout for 9" to
13" plate and 5" plate



ADC1 可放7"到9" 及4.5" 圆盘
ADC1 Layout for 7" to 9"
plate and 4-1/2" plate



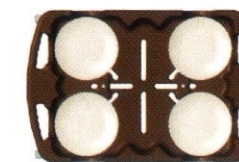
ADC2 可放10" x14.5" 的
托盘以及7.5" 到10" 的圆盘
ADC2 Layout for 10"
by 14-1/2" trays and 7-1/2"
to 10" plates



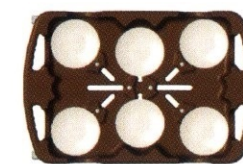
ADC2 可放12" x9.25" 的
或9.25" x7.25" 的椭圆盘
ADC2 Layout for 12" by
9-1/4" and 9-1/2" by
7-1/4" plates



ADC2 可放9.8" 到11.25" 圆盘
ADC2 Layout for 9-4/5"
to 11-1/4" plates



ADC2 可放11.4" 到13" 圆盘
及13.5" x10.5" 椭圆盘
ADC2 Layout for 11-2/5"
to 13" plate and 13-1/2"
by 10-1/2" platters



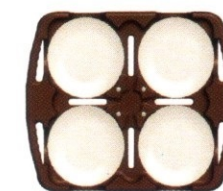
ADC2 可放8.4" 到9.8" 圆盘
ADC2 Layout for 8-2/5"
to 8-4/5" plates



ADC2 可放12" X 9" 到9.5" X 7.25"
椭圆盘及4.5"到8"及5.5" 到12" 圆盘
ADC2 Layout for 12" by 9" to
9-1/2" by 7-1/4" platters, 4-1/2"
to 8" plates and 5-1/2" to 12" plates



ADC2 可放8" 到8.25" 的圆盘
ADC2 Layout for 8" to
8-1/4" plates



ADC3 可放6" 到13" 圆盘
ADC3 Layout for 6"
to 13" plates



ADC3 可放4.5" 到6" 圆盘
ADC3 Layout for 4-1/2"
to 6" plates