

MEISO®

User Manual

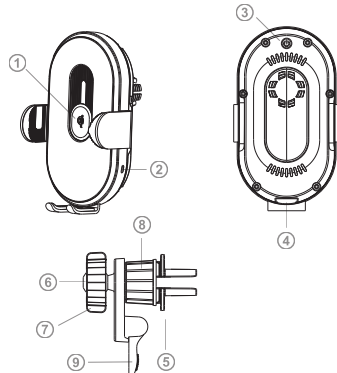
Wireless Car Charger Phone Mount

Smart Wireless Car Charger

Product Introduction

Thank you for ordering this device. It is a smart wireless car charging phone holder, supports scanning and auto-tracking coils to charging different brands smartphones. Make you easily experience the fun of wireless smart digital products. Please read this manual carefully before operating this device and

Product structure diagram



- 1.Movable alignment wireless sensing area 2.Work indicator
3.Touch button 4.Type-C interface 5.Car air vent clip
6.Multi angle rotating ball 7.Fixing nut 8.Air vent clip nut
9.Air vent clip support

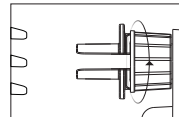
Instructions

Air vent clip fixing method

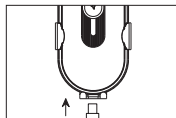
1.Loosen the air vent clip nut, and insert the clip into the air conditioner blade



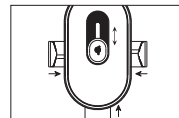
2.Rotate and tighten the Air vent clip nut



3.Insert the Type-c data cable to the port, the clamp arms will automatically open.

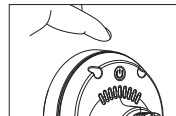


4.Place the phone on the holder, the arm will auto close and lock, and then auto-scanning the coil and charging

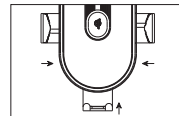


Electric clamp arm, please don't take out the phone forcibly by hand

Touch the button on the top of the car holder when necessary, the clamp arms will automatically open



Memory function: after the first coil alignment, it will charge immediately if place the same phone on the device



Specifications

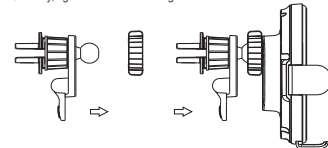
Product Model: XMZ01
Input: 5V==2A; 9V==2A; 12V==1.5A(Max)
Output: 5W/7.5W/10W/15W(Max)
Induction Distance: 2-8mm
Bare-metal Weight: 182g, With clip 205g

NOTE:

- * Keep out of reach of children.
- * Do not use under wet conditions.
- * Please do not make any change to the product by yourself.
- * Please avoid a strong collision of the product.
- * Do not disassemble and repair the product if you are not a professional.
- * Do not use external force to move the clamp arm.
- * The product needs to be equipped with QC2.0/QC3.0 and other formally certified car chargers to fit.
- * The product uses the principle of wireless charging and capacitive sensing to make charging more convenient.
- * The product has a built-in battery. Please touch the button to open the clip arm after charging for 5 minutes and disconnecting the power.

Quick Start Guide

- 1.Please put the rotary ball of the car phone holder into the fixing nut first;
- 2.Then press the rotary ball and nut into the car phone holder;
- 3.Finally, tighten the nut according to individual needs.



- ★ The product has a foreign body detection function. It will affect the wireless charging usage if equipped with ring holders, metal objects, or other stuff that increases the phone thickness.

Package Content

- 1 X Smart Wireless Car Charger Holder
- 1 X Air vent Mount
- 1 X Type-C USB Cable
- 1 X Instruction Manual

Compatible Devices

- iPhone: iPhone12, iPhone11, iPhone X, iPhone XR, iPhone XS, iPhone SE 2020, iPhone 8 Series;
Samsung: Note20, Note10, Note9, Note8, Note7, Note6, Galaxy S20, S10, S9, S8, S7, Z Fold2, Z Flip 5G,
Other: LG V40, V50, V35, V60, G7, G8, V35; Google Pixel 3/4/5; Lumia, Huawei, Microsoft, Sony, Blackberry Qi enabled Phones;
★ Note: All Qi standard smart devices are supported. (The list above is only included Common phone models).

Customer Service

- E-mail: service@meiso.com
Phone: +(86)138-2339-3280
Website: <http://www.meiso.com>
12-Hour Response friendly customer service.