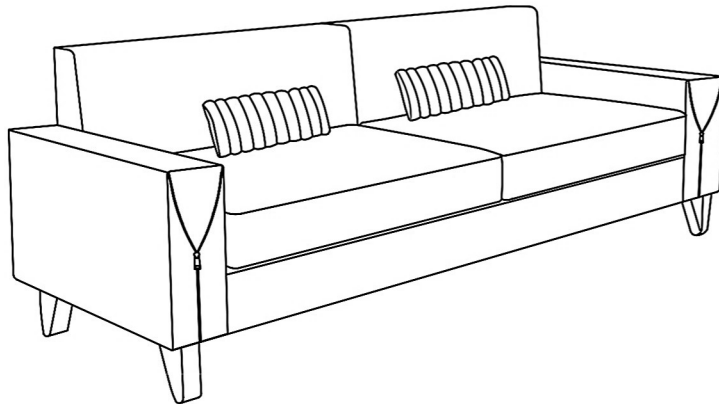


ASSEMBLY INSTRUCTIONS

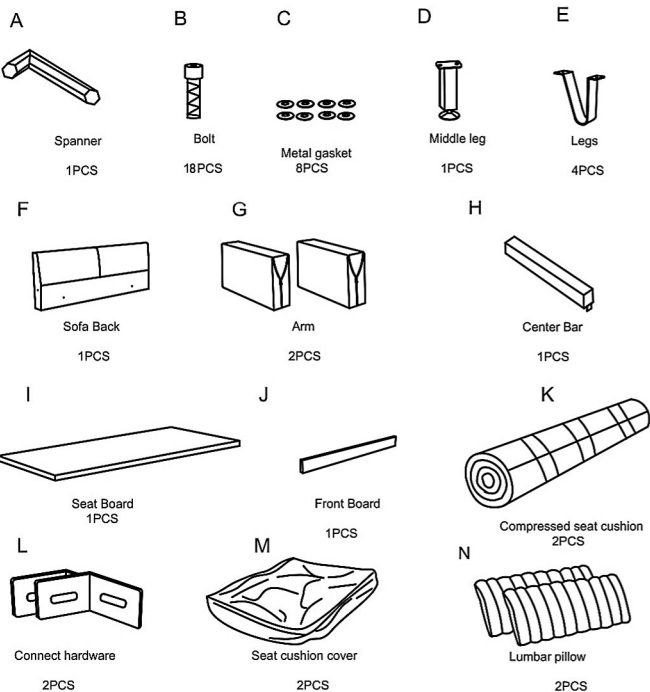
ITEM NO:P13-3S



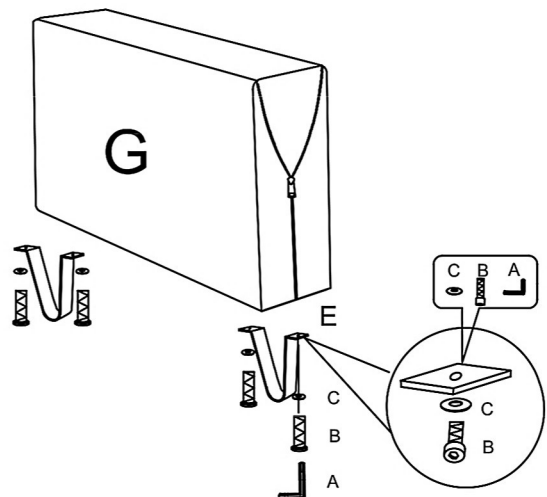
*Please do not move the sofa after installation. If you need to move the sofa, please disassemble the sofa first, and re-install it at your destination.

*Please keep this *installation instruction for your future use.

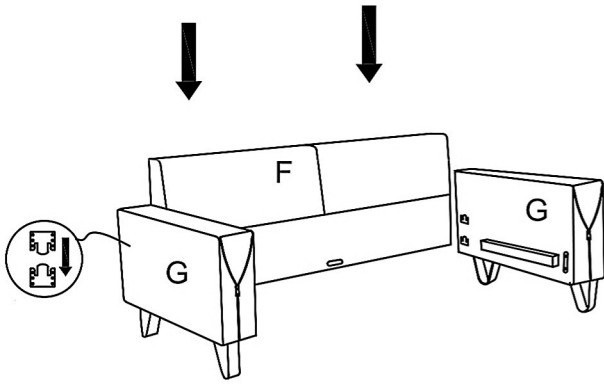
*Please read steps 3, 4, 5 and 6 of the assembly installation carefully



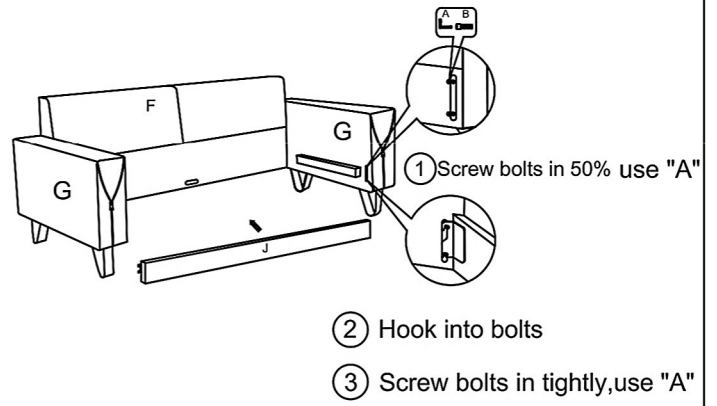
STEP 1



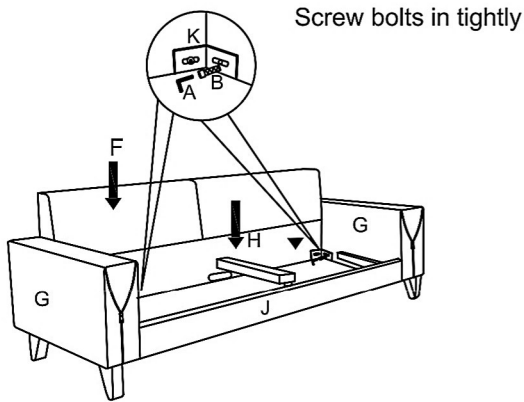
STEP 2



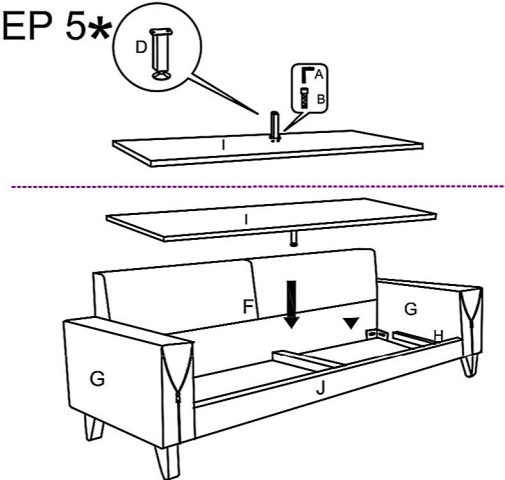
STEP 3*



STEP 4*



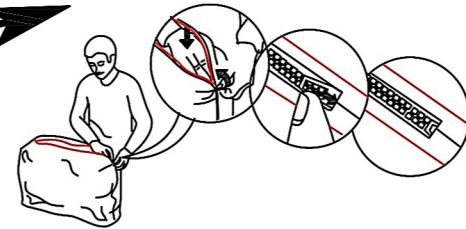
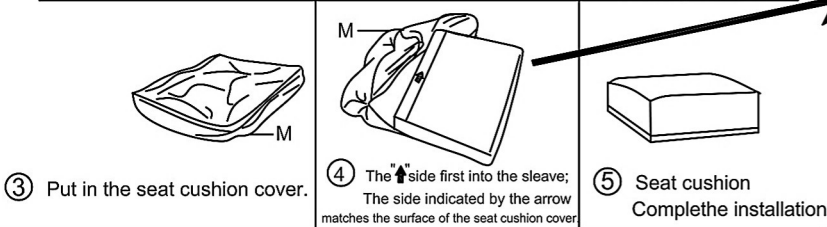
STEP 5*



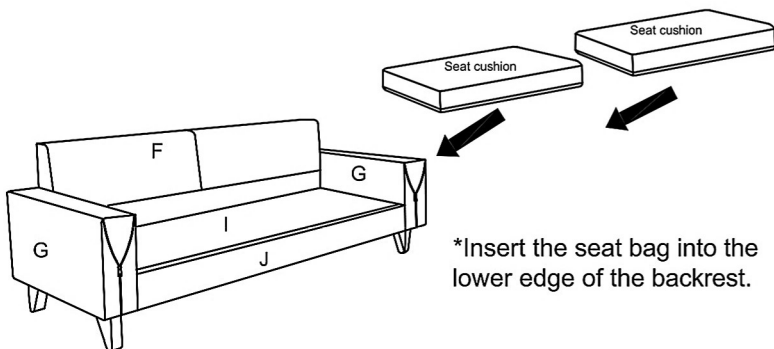
STEP 6*

Compression use of Seat cushion.

How to tidy sofa seat cushions ?



STEP 7



STEP 8

