

Multi-function Tester

OTDR / OPM / OLS / VFL



OTDR:0-60km

VFL:10mw

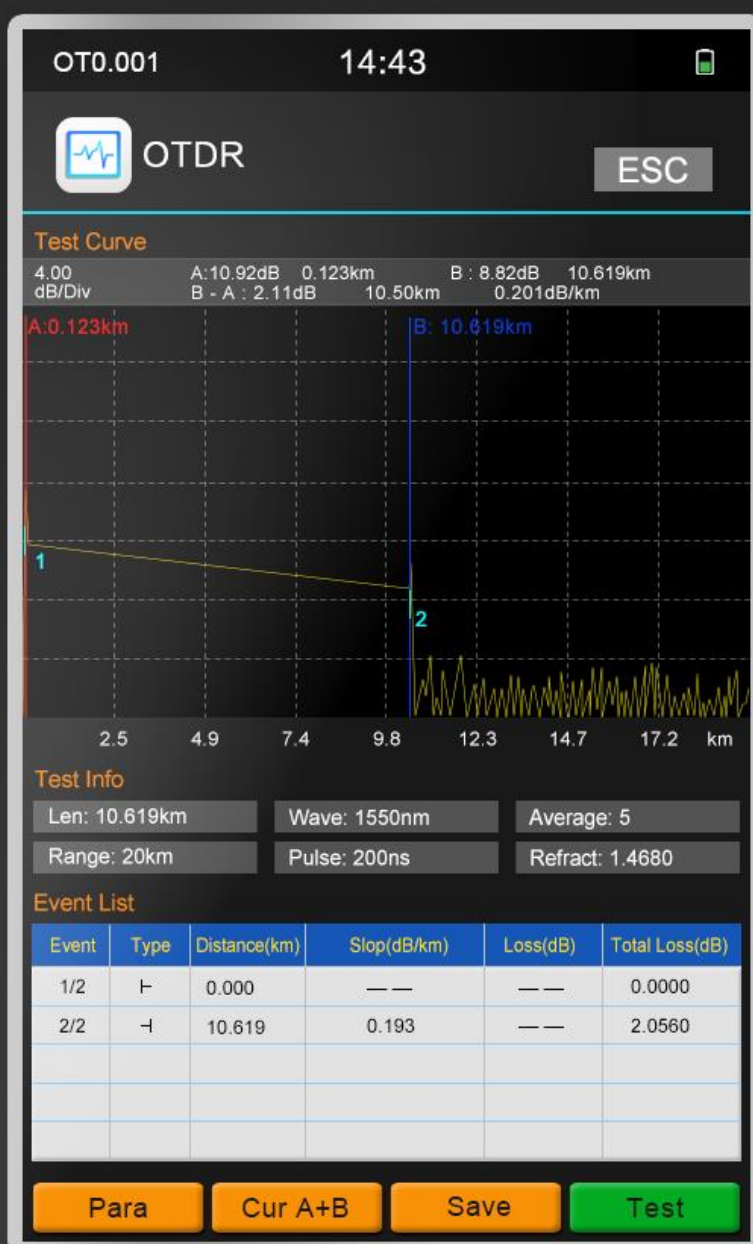
OPM:-70~+10dbm
or -50~+26dbm

OLS:1310/1550nm



4 inch IPS Display

Clear and readable in outdoor sunlight



7.4V/4400mAH Lithium battery



Specifications



OTDR	
Type	TM290 (T)
Wavelength	1310/1550nm
Dynamic Range	22/20dB
Measure distances	0-60km
Fiber type	SM
Type of Fiber	9/125um Single-mode optical fiber
Type of Connectors	FC/PC/; SC/PC
Peak Value of laser	>=30mW
UOM of Measurement	Meter,Feet,Mile
Dead Zone of Reflection Event	2m
Dead Zone of attenuation Event	12m
Accuracy Distance (Reflection Event)	About +_(1m+2 *10(-4)* distance)
Number of test records saved	100
Power Supply	8.4V Li-ion Battery 4400mAH
Battery working time	>=5,000 times of measurements
Temperature	Operate :-5~50 ,Store:-10~60
Humidity	0~85%(Non-condensing)
Weight(g)	300

Optical Power Meter

Measurement range dBm	-70~+10 dBm;-50~+26 dBm
Wavelength range (nm)	800~1650
Calibrated wavelength	850nm、1300nm、1310nm、1490nm、1550nm、1625nm (other wavelength will be on request)
Detector	InGaAs
Accuracy	<±3% (-10dBm、22℃)
Resolution	Linearity: 0.1%, Non-linearity: 0.01dBm
connector	Movable FC/PC SC/PC, (ST as Optional)

Visual Fault Locator

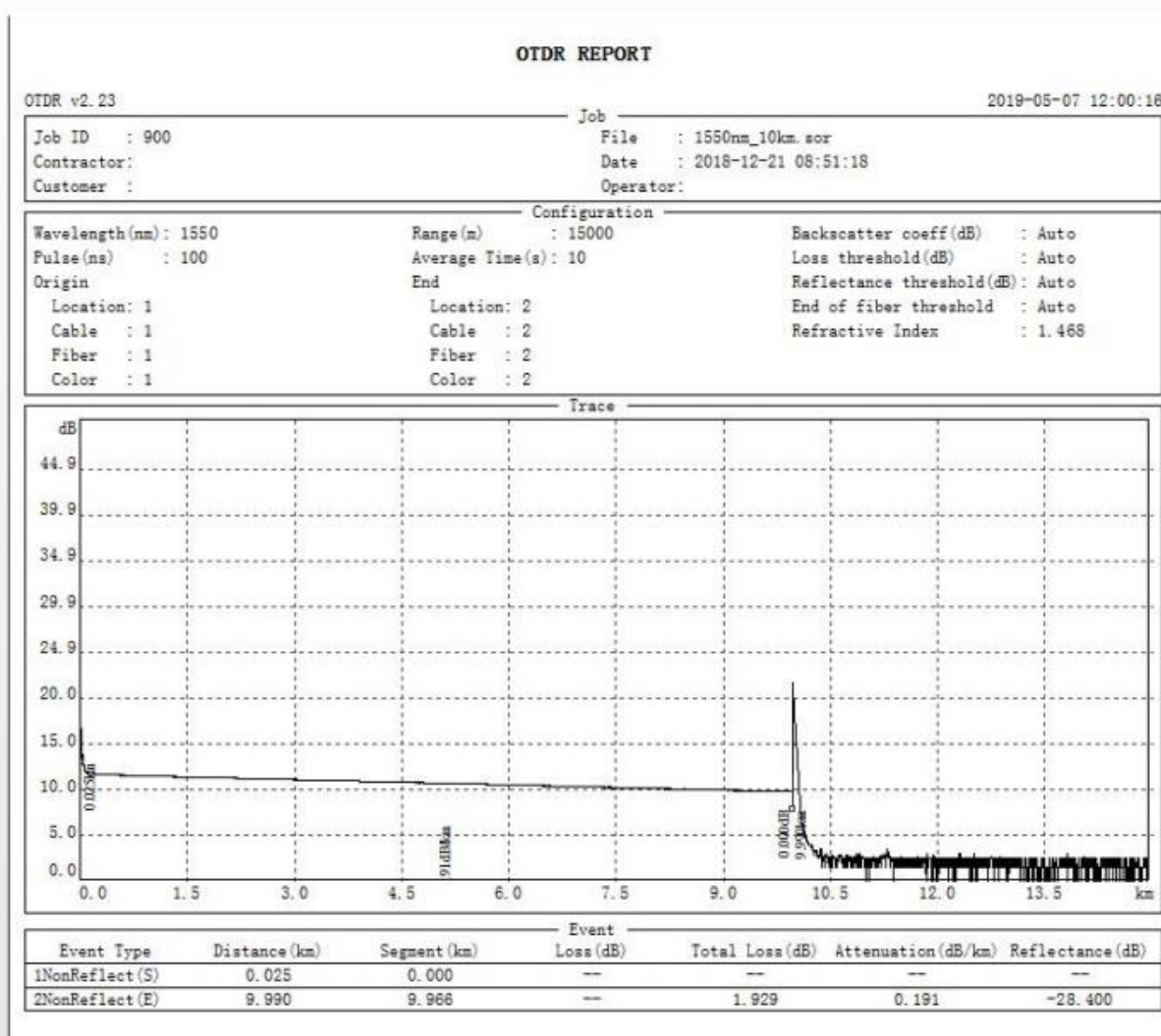
Wavelength	650nm
VFL Output Power	>=10mW
Mode	0Hz, 1Hz, 2Hz
Fiber type	SM/MM

Optical Light Source

Emitter	FP-LD
Wavelength (nm)	1310/1550nm
Connector	FC/PC (SC/ST as optional)
Output power	≥-5dBm
Output stability(dBm)	±0.04@20℃@15min
Modulation	CW/270Hz/1KHz/2KHz
Fiber type	SM

Print Test Report

The test report contains the information such as test conditions, test curves, link loss, average loss, event list, etc., and the test reports can be batch printed after confirmation.



OTDR Soft case

Oxford cloth waterproof and durable



