

ALWONDER GA SPINNING REEL

OWNER'S MANUAL

Model	Gear Ratio	Ball Bearings	Weight	Line Capacity			Max Drag
GA-10000	4.6:1	12+1	741g/ 26.14oz	Lb/Yds: 20/310 mm/m: 0.4/420	25/270 0.5/270	30/200 0.6/180	14kg/ 31Lb
GA-11000	4.6:1	12+1	721g/ 25.43oz	Lb/Yds: 20/380 mm/m: 0.4/500	25/320 0.5/320	30/240 0.6/210	14kg/ 31Lb

Thank you for choosing Alwonder GA Spinning Reel. We are confident that you will enjoy years of outstanding performance from this reel. See the instructions below for the use and care of your new reel.

APPLICATION AND DETAILS

***Filling Spool with Line** - You will find that it is easier to fill the spool with line while the reel is mounted on a rod. Open the bail, tie line to the spool, then turn the reel handle forward to close the bail. Keep the line under tension with your fingers while turning the handle to spool the line onto the reel. **IMPORTANT:** The line must come off its storage spool and onto the reel spool in the same direction that the bail is turning in order to avoid line twist. Fill the spool to about 90% full. Do not overfill—this will cause the line to coil off the edge of the spool and tangle. Do not under fill—this will decrease the reel's casting efficiency. Line clip on the spool hold line neatly in place once you have filled the spool with line.

*** Setting Drag** - The drag knob sets the spool's tension, which allows the line to be pulled out under a certain force. Turning the drag knob clockwise increases drag, rotating it counter clockwise decreases drag. Set your drag with the reel on the rod you will be using, with line fully strung through rod guides. Put the reel's anti-reverse lever to the **RIGHT** position. Hold the rod at a 45° angle and have someone pull on the line while you decide on the proper drag tension. Or you can tie the line to a stationary object and back up while holding the rod at the same 45° angle. Once you make the initial drag setting, it can be easily adjusted if needed.

***Selective Anti-Reverse System** - Simply flip the switch on the back of the reel to the **LEFT**, then anti-reverse is engaged. This means the handle will not rotate backwards. Flipping the switch to the **RIGHT** will disengage the anti-reverse and allow the handle to rotate freely in either direction.

***Convert Handle Side:**

1.Remove the knob opposite to the handle. After removing it, you will see the white plastic cap and the small gear inside, remove them too. Then pull out the handle.

2.Install the handle to your favorable side, then put the white plastic cap and the small gear back accordingly. Finally screw the knob back on the other side.

CARE AND LUBRICATION

This GA Spinning Reel is designed to provide years of dependable service, but as with all precise instruments, some care is required:

***Periodically** use a light machine oil to lubricate the line roller, the main shaft under the spool, and all moving parts of the bail and handle.

***Every time** after fishing, clean it thoroughly with soft cloth.

***Please take special care** to avoid the scratch of the rim of the spool. Do not place it on the cement floor or rocks surface. Once the reel's surface becomes rough, it will greatly affect the cast.

***The internal structure** of spinning reel is very complex, please be cautious when trying to disassemble it.

WARRANTY

Thank you for shopping with Alwonder. This full warranty applies to the GA Spinning Reel (Model GA-10000 and Model GA-11000).

*How long does the coverage last?

The warranty period is 180 days from the day of purchase. A replacement product assumes the remaining warranty of the original product.

*What does this warranty cover?

This cover any defects or malfunctions in material or workmanship under normal use during the warranty period.

*What does this warranty not cover?

Damage not resulting from defects or malfunctions while in possession of customer, unreasonable use will not be cover by this warranty. If, however, the repaired or return is not covered by the provisions of this warranty, we will charge a reasonable price for repairing, parts and return transportation.

*What will we do to correct problems?

Within the warranty period, we will provide either free replacements of defective parts, free replacements of a new product, full or partial refunds.

*What do you have to do?

In order to obtain warranty service, please E-mail us at CS@Alwonder.com with your proof of purchase (such as order IDs). If you want to return your product, please do contact us through E-mail first. Our assistant will get back to you within 24 hours. For Amazon or eBay orders, sign in to your account, click the "Your Account" option, and then select "Your Orders." Click the "Contact Seller" button next to your order from us and let us know about your problems.

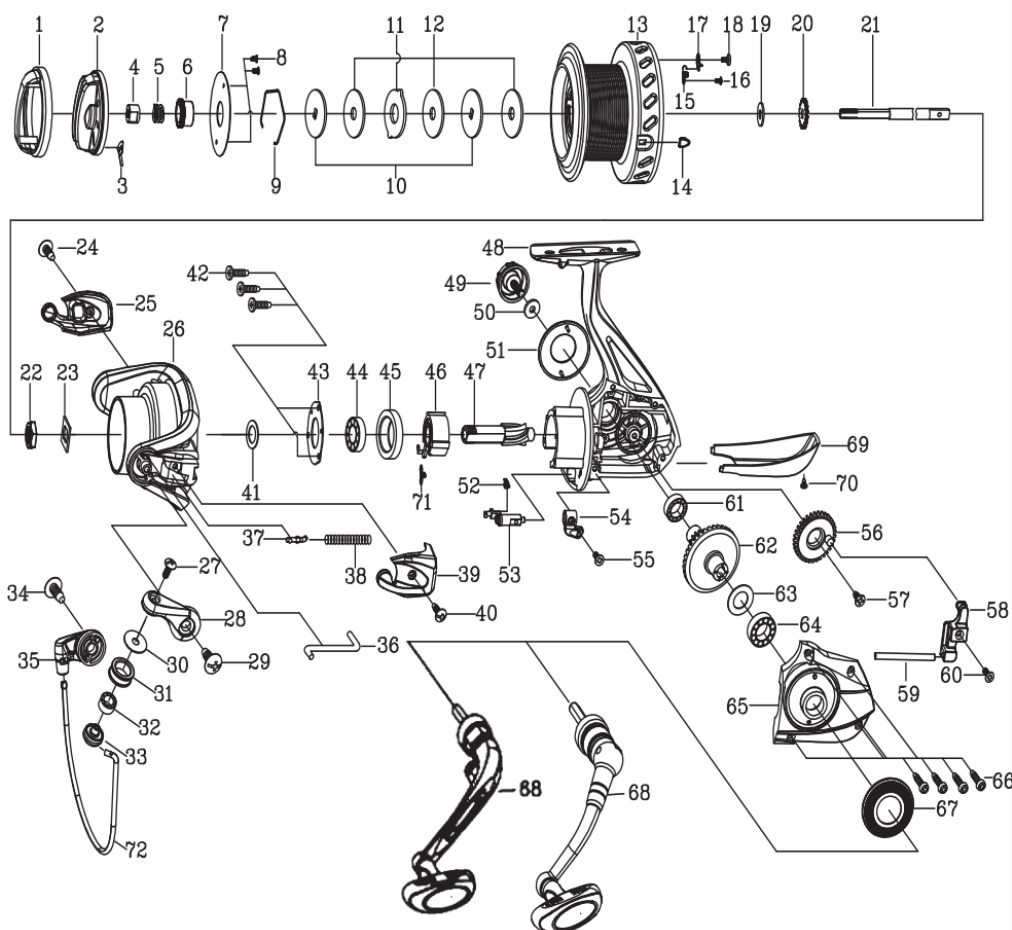
*Alwonder reserves the sole right to refuse the return of any item in which the purchaser has made previous multiple returns or if the product has been used. In addition, we will not accept orders from customers that have demonstrated a high incidence of returns after purchase.

SOME STATES DO NOT ALLOW LIMITATIONS ON HOW LONG AN IMPLIED WARRANTY LASTS OR THE EXCLUSION OR LIMITATION OF INCIDENTAL OR CONSEQUENTIAL DAMAGES, SO THE ABOVE LIMITATIONS OR EXCLUSIONS MAY NOT APPLY TO YOU.



Manufacturer: Alwonder

Product's Country of Origin: China



- | | | |
|-------------------------|---------------------------------|------------------------|
| 1 Drag Knob Cap | 26 Rotor | 51 Body Deck |
| 2 Drag Knob | 27 Bail Screw | 52 Stopper Lever S/P |
| 3 Drag Click Claw | 28 Arm Lever | 53 Stopper Lever Shaft |
| 4 Drag Nut | 29 Arm Lever S/C | 54 Stopper Lever |
| 5 Drag Spring | 30 Line Roller W/S | 55 Stopper Lever S/C |
| 6 Drag Bushing | 31 Line Roller | 56 O/S Gear |
| 7 Drag Plate | 32 Line Roller Bearing | 57 O/S Gear S/C |
| 8 Drag Screw | 33 Line Slider | 58 O/S Slider |
| 9 Spool Ring | 34 Arm Lever S/C | 59 O/S Slider Fix |
| 10 Spool "D" W/S | 35 Bail Holder | 60 O/S Gear S/C |
| 11 Spool W/S | 36 Kick Lever | 61 Body Bearing |
| 12 Spool "A" W/S | 37 Arm Lever Shaft | 62 Drive Gear |
| 13 Spool | 38 Arm Lever Spring | 63 Drive Gear W/S |
| 14 Line Clip | 39 Arm Lever Cover | 64 Body Cover Bearing |
| 15 Prolong Sharpnel | 40 Rotor Cover S/C | 65 Body Cover |
| 16 Spool Click Claw S/C | 41 Pinion W/S | 66 Body Cover S/C "A" |
| 17 Spool Click Claw | 42 Pinion Bearing Rotor W/S S/C | 67 Body Cover Fix |
| 18 Spool Click Claw S/C | 43 Pinion Bearing Rotor W/S | 68 Handle Assy |
| 19 Main Shaft W/S | 44 Pinion Bearing "A" | 69 Body Cup |
| 20 Click Gear | 45 Pinion Bearing Sheath | 70 Body Cup S/C |
| 21 Main Shaft | 46 One Way | 71 One Way Spring |
| 22 Rotor Nut | 47 Pinion | 72 Bail Arm |
| 23 Rotor W/S | 48 Body | |
| 24 Square Side S/C | 49 Handle Cap | |
| 25 Square Side | 50 Handle Cap W/S | |