



MICTUNING
DESIGNED FOR SAFE AND FUN

If You Crave to Turn Your Vehicle from Ordinary to Extraordinary

MICTUNING Most Innovative Aerodynamic LED Light Bar Makes Your Dream Come True

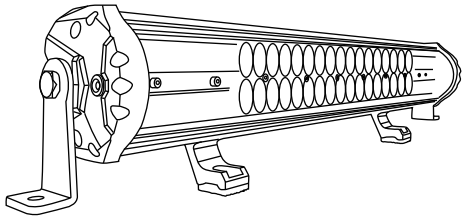
Overview :

MICTUNING® is a leading manufacturer of advanced lighting products that combine the unparalleled quality and exceptional performance.

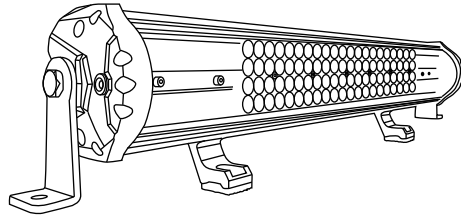
Latest Magical M2 series Aerodynamic LED Light Bar adopt exclusive Streamline ArcMask design, significantly reduces wind noises and wind-drags than ever before.

Features Modern Styling and Performance, Brilliant Illumination, Weatherproof Design. Enjoy Off-road Adventure!

Magical M2



Dual Row



Quad Row

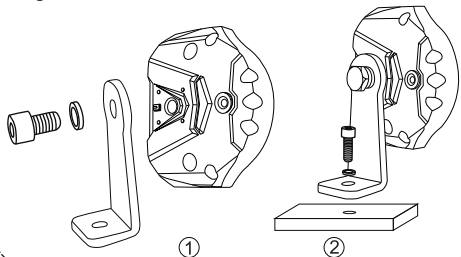
Optional Mounting Bracket :

Comes with all necessary mounting hardware for trouble-free installation

Bracket	Dual Row		Quad Row	
With Side & Bottom Bracket	19.1"	30.6"	21"	30.9"
Only With Side Bracket	42"	51.5"	42.7"	52.5"

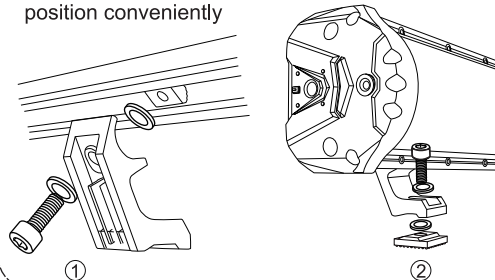
Side Bracket

360 degrees adjustable, makes changing the light beam direction easier



Bottom Bracket

Easy to slide on both sides, mounted on desired position conveniently



MICTUNING® ALL RIGHTS RESERVED

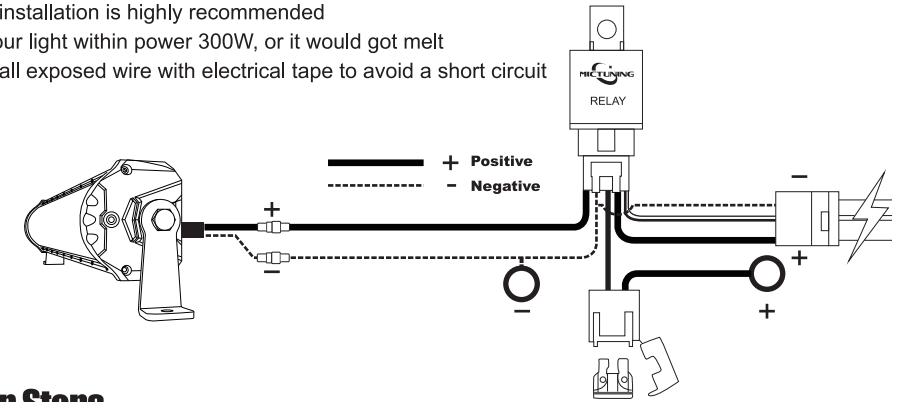
Wiring Diagram (Wiring Harness Kit Included)

Caution:

Professional installation is highly recommended

Make sure your light within power 300W, or it would got melt

Please wrap all exposed wire with electrical tape to avoid a short circuit



Operation Steps

1. Connect the red+ wire from the fuse to battery +; Connect the black wire from the relay to the battery -;
2. Connect the white+; black- wire from the relay to light bar(red/black correspond to the wire of lights bar);
3. Turn on switch button to test the lights bar.

Specification :

Dual Row :

Size	LED QTY	Luminous Flux	Input	Waterproof Rating	Color Temperature	Lifespan	Working Temperature
19.1 inch	36 pcs	9720Lm	9-36V/DC	IP67	6000K	50000 hours+	-40℃ ~ 70℃
30.6 inch	60 pcs	16200Lm	9-36V/DC	IP67	6000K	50000 hours+	-40℃ ~ 70℃
42 inch	84 pcs	22680Lm	9-36V/DC	IP67	6000K	50000 hours+	-40℃ ~ 70℃
51.5 inch	104 pcs	29100Lm	9-36V/DC	IP67	6000K	50000 hours+	-40℃ ~ 70℃

Quad Row :

Size	LED QTY	Luminous Flux	Input	Waterproof Rating	Color Temperature	Lifespan	Working Temperature
21 inch	152 pcs	8500Lm	9-36V/DC	IP67	6000~6500K	50000 hours+	-40℃ ~ 70℃
30.9 inch	232 pcs	13000Lm	9-36V/DC	IP67	6000~6500K	50000 hours+	-40℃ ~ 70℃
42.7 inch	320 pcs	17900Lm	9-36V/DC	IP67	6000~6500K	50000 hours+	-40℃ ~ 70℃
52.5 inch	400 pcs	22400Lm	9-36V/DC	IP67	6000~6500K	50000 hours+	-40℃ ~ 70℃

Safety Information:

Please follow all warnings and precautions for safe operation

Please match the wiring harness (INCLUDED) with correct operating voltage

Please don't disassemble the product by yourself to avoid damage to the product performance

This product is NOT suitable for household AC power supply in case of causing product failure and short circuit

Thank you very much for purchasing MICTUNING product.

MICTUNING® ALL RIGHTS RESERVED