



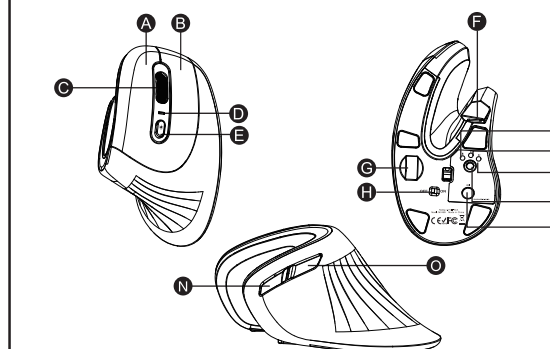
EM11

User Manual

2.4G+Bluetooth Dual-Mode RGB Ergonomic Mouse

support@protoarc.com | www.protoarc.com

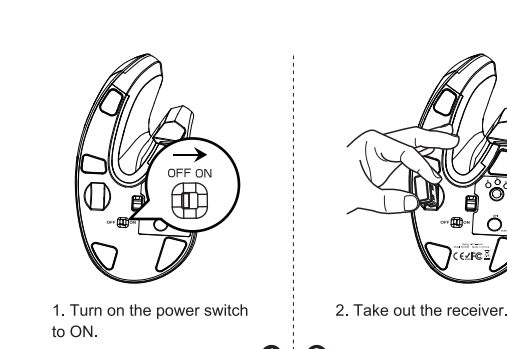
Product Features



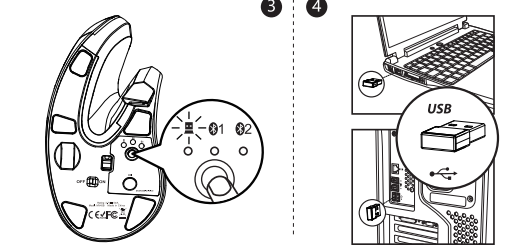
- A Left Button
- B Right Button
- C DPI Indicator / Low-Battery Indicator
- D Light Mode Switch Button
- E TYPE-C Charging Port
- F USB Receiver
- G Power Switch
- H 2.4G Indicator
- I Bluetooth 1 Indicator
- J Bluetooth 2 Indicator
- K Mode Switch Button / Bluetooth-Pairing key
- L DPI Button
- M Forward button
- N Backward button

Light Effect Mode: 1. Streamer Mode 2. Neon Mode
3. Breathing Mode 4. Monochrome streamer Mode

2.4G USB Connection

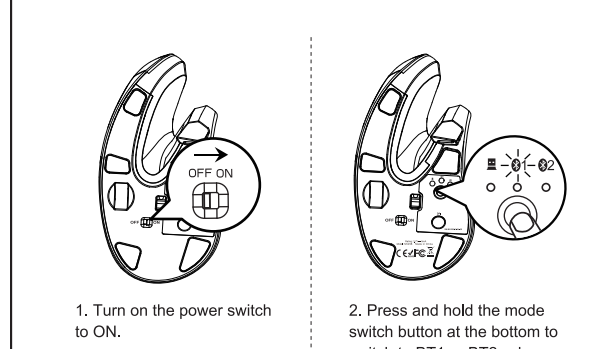


1. Turn on the power switch to ON.
2. Take out the receiver.

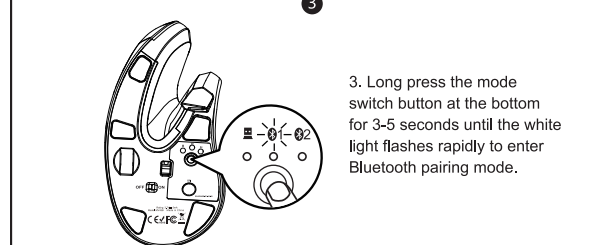


3. Press and hold the mode switch button at the bottom until the white light comes on to enter 2.4G mode.
4. Insert the usb receiver into your computer's usb port.

Bluetooth Connection

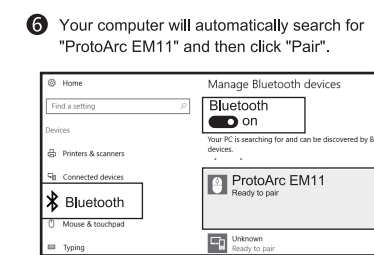
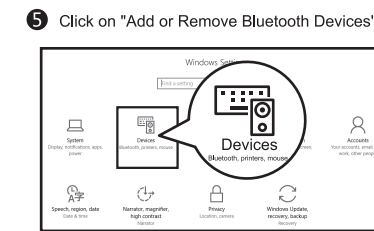
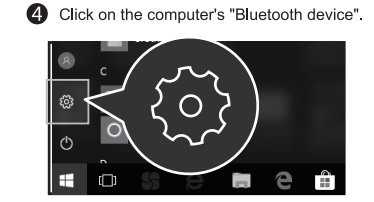


1. Turn on the power switch to ON.
2. Press and hold the mode switch button at the bottom to switch to BT1 or BT2, when the white light flashes slowly.



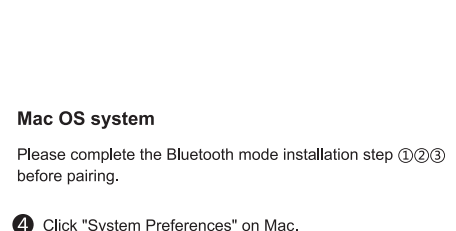
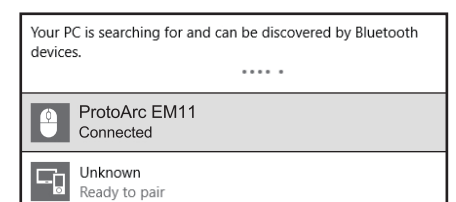
3. Long press the mode switch button at the bottom for 3-5 seconds until the white light flashes rapidly to enter Bluetooth pairing mode.

Windows 10 System



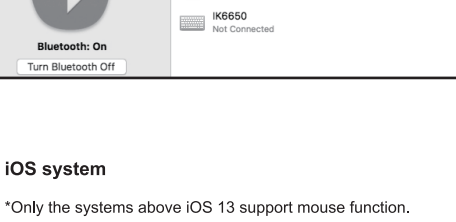
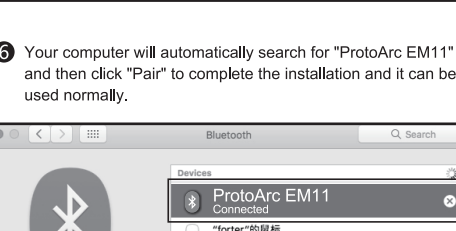
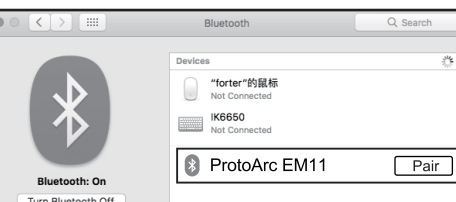
4. Click on the computer's "Bluetooth device".
5. Click on "Add or Remove Bluetooth Devices".
6. Your computer will automatically search for "ProtoArc EM11" and then click "Pair".

Mac OS system



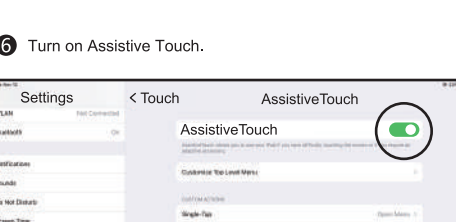
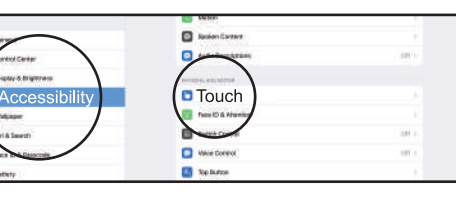
7. "ProtoArc EM11" is connected and can be used normally.
8. Please complete the Bluetooth mode installation step ①②③ before pairing.
9. Click "System Preferences" on Mac.

iOS system



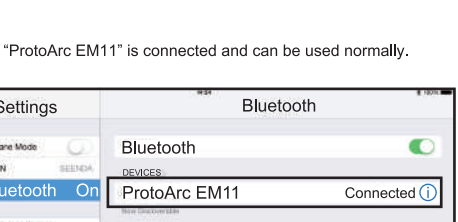
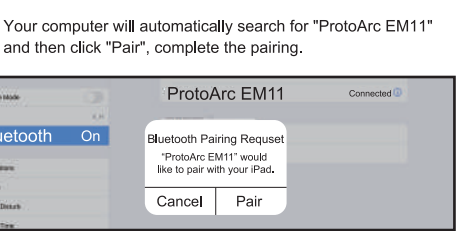
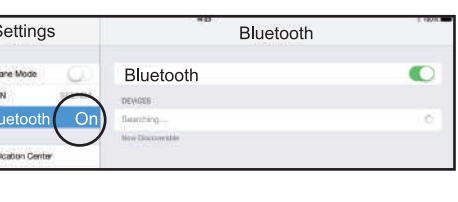
5. Click "Bluetooth" in "System Preferences".
6. Your computer will automatically search for "ProtoArc EM11" and then click "Pair" to complete the installation and it can be used normally.
7. Click Settings on the device and turn on Accessibility.
8. Click touch.
9. Turn on Assistive Touch.

Android System



4. Click Settings on the device and turn on Accessibility.
5. Click touch.
6. Your computer will automatically search for "ProtoArc EM11" and then click "Pair", complete the pairing.
7. "ProtoArc EM11" is connected and can be used normally.

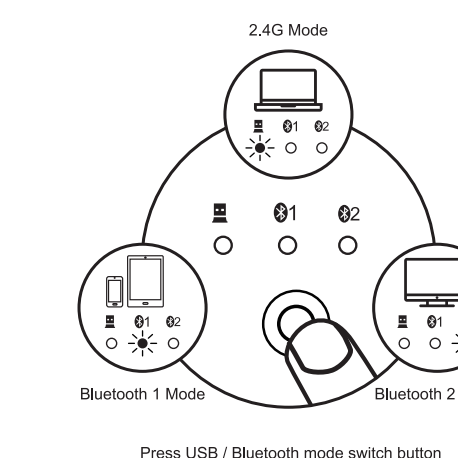
Android System



4. Please complete the Bluetooth mode installation step ①②③ before pairing.
4. Click Settings on the device and turn on Bluetooth.
5. Your computer will automatically search for "ProtoArc EM11" and then click "Pair", complete the pairing.
6. "ProtoArc EM11" is connected and can be used normally.

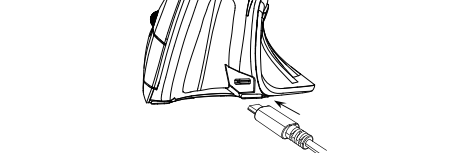
How to Switch Connection Mode

After Bluetooth and USB wireless mode is connected, press USB / Bluetooth mode switch button to switch between different devices. One press can only switch mode once. You may need to press it twice to get the mode you want.



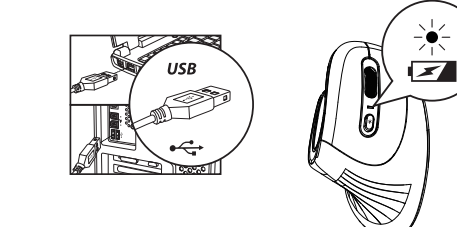
How to Charge the Mouse

1. When the battery power is low, please charge the mouse with the included Type-C charging cable (by inserting the Type-C charging cable into USB port of the computer).



Note: Best to use original data transmission cable.

2. When the power is low, the Charging indicator light flashes quickly, once a second, flashing 10 times to warn the product of low power, please use the charging cable to charge. The indicator light is always on blue during charging, the blue light turns off when charging is complete after 3-4 hours, it provides 1 week of use. When the light function is turned on, it provides 1 week of use. When the light function is turned on, it provides 1 week of use. When the light function is turned on, it provides 1 week of use. When the light function is turned on, it provides 1 week of use.



Specifications

- Basic Parameters**
- Engine: Optical
 - DPI: 1000-1600-2400
 - Lithium battery: 930mAh
 - Click Life: 3 million+
 - Dimension: 138 x 69.2 x 68.1mm
 - Weight: 112 ± 10 grams
- Bluetooth Transmission Parameters**
- Transmission distance: 8m
 - Working Voltage: 3.7V
 - Working Current: 5mA
 - Frequency: 125Hz
 - System requirements: Bluetooth-enabled device; Windows 8, Windows 10; Mac OS X 10.12 or higher version; Android 4.3 or higher version.
- 2.4G Wireless Transmission Parameters**
- Transmission distance: 8m
 - Working Voltage: 3.7V
 - Working Current: 5mA
 - Frequency: 250Hz
 - System requirements: Devices with USB ports; Windows XP, Windows 7; Windows 8, Windows 10; Mac OS X 10.12 or higher version.

Package List

- ▶ 1 x Wireless Mouse
- ▶ 1 x Type-C charging cable
- ▶ 1 x USB receiver
- ▶ 1 x User manual